



KEY LOCK & LANTERN NEWS



Nov/Dec 2025

Issue No.89

The Bi-Monthly Digital Supplement to the Key Lock & Lantern Journal



HOLIDAY TRAIN SHOWS & EXCURSIONS



**Railroadiana
Auction Results**

**Railroad Museum &
Preservation News**

**KL&L News &
Announcements**



KEY LOCK & LANTERN NEWS



The Bi-Monthly Digital Supplement to Key Lock & Lantern Magazine
WWW.KLNL.ORG

November/December 2025 **Issue #89**

Railroad Event Calendar.....	3
Brookline Railroadiana Auction.....	4
Railroad Memories Auction.....	6
JM Hobby Railroadiana Auction.....	8
Rail & Road Auction Report.....	10
Holiday Shows & Excursions.....	12
Gaithersburg Show Report.....	14
2026 KL&L Convention.....	16
WNYRHS Train Show.....	18
C&O Historical Society Show.....	19
Southern California Railway Museum Swap Meet.....	24
Lake Superior Railroad Museum Jazz.....	25
Hagerstown Model Railroad Museum Show.....	26
KL&L News Editor.....	David Hamilton

Send News to transportsim@aol.com

The Key, Lock & Lantern News is published bi-monthly as a digital supplement to the quarterly Key, Lock & Lantern magazine. Recipients may repost or forward complete and unmodified copies of this newsletter to other hobbyists and websites, but its content may not otherwise be copied or distributed without the permission of the KL&L Board of Trustees. Copyrights are held by the respective authors and photographers. Excerpts of news items may be published with the credit line "Key, Lock & Lantern News." Descriptions, photos, and prices in auction reports and ads are supplied by the auction companies and do not represent an evaluation or endorsement of value or authenticity by Key, Lock & Lantern.

Annual membership dues for Key, Lock & Lantern are \$40 for residents of the USA, and \$60 for outside of the USA (by money order or electronic payment in US funds). Members receive four issues of the quarterly KL&L magazine, delivered via first class mail. Applications for membership & address changes should be forwarded to the VP-Membership at the e-mail address listed at right. Online membership forms and dues payment via Paypal are available at www.klnl.org.

Contributions of articles, photos, and news may be forwarded to the editor at the e-mail address listed at right. The submission of material in digital format is preferred, with text files in DOC, TXT, or PDF format, and images in JPG, TIF, BMP or GIF format. Digital files may be sent by e-mail or on a computer CD or flash drive. Please contact the editor regarding optimum file sizes and formats, or for the submission of hard copy material.

By submitting material to Key, Lock & Lantern, the contributor grants permission for use in any edition of the KL&L magazine, digital newsletter, websites, and other publications. All material will be retained by KL&L for future use, unless the contributor specifically requests that it be returned, and includes a suitable, self-addressed, stamped envelope. Current deadlines are listed in the Key, Lock & Lantern Advertising Guide, which is available on the KL&L website at www.klnl.org, or by contacting the editor.

Key, Lock & Lantern

A non-profit membership corporation dedicated to the preservation of transportation history and railroad memorabilia

The mission of Key, Lock & Lantern is to gather and publish information on the history of the transportation industry, and to support the preservation of railroad artifacts. KL&L members have an interest in all aspects of railroad & transportation history, from research and preservation projects to the conservation and restoration of all types of historical memorabilia. Originally formed in 1966, Key, Lock & Lantern, Inc. was officially incorporated in 1988 as a non-profit, educational, membership corporation in the State of New Jersey, under the provisions of Section 501(c)(3) of the United States Internal Revenue Code. Membership is open to anyone with an interest in transportation history and in achieving the goals of the organization.

Officers & Trustees

Chairman of the Board

John Brainard
j944wb@aol.com

President & Editor

David Hamilton
transportsim@aol.com

VP- Membership / Treasurer

Marie Brainard
j944wb@aol.com

Secretary

Jeremy Tuke

Chaplain / Sgt at Arms

Chip Greiner

Historian

Peter Gores

Trustees at Large

Lyman Gray, Joel Shaw, Leonard Gordy, Bob Lipman, Randy Bushart, William Sternitzke, Bill Roberts, Bob Myers, Joey Senese, Matthew Bushart, Michael Decker

www.klnl.org



For Current News
"Like" KL&L on

facebook

From the President's Desk.....



Another holiday season is winding down, and along with it the model train shows, winter train rides, and other special events sponsored by railroad groups and museums. These activities not only serve as a source of income for the various non-profit organizations, but they are also an excellent way to introduce railroading to a new audience. From what I saw, it was another successful year for the local heritage railroads and clubs in my area.

Hopefully, some of the patrons at the holiday model train shows and Polar Express rides will get bitten by the collecting bug and will develop an interest in railroad history. The next events that they attend may be the Gaithersburg show or the Key Lock & Lantern Convention.

On the subject of Gaithersburg, after an absence of several years, Key Lock & Lantern returned as an exhibitor at the 2025 show. Thanks to the generous donation of table space and a nice custom-made logo tablecloth by board member Chip Greiner, KL&L was back spreading the word about the organization among the most serious railroading collectors.

Although the Gaithersburg show is slightly smaller than it was in the heyday of collecting, it is still a major event for railroad collectors, and is always worth attending. No matter how much I try to limit my purchases, I always end up going home with a few things from the show.

While some railroading shows are shrinking in size, the Key Lock & Lantern Convention keeps growing. We will be back in Carbondale for the 2026 program, once again at the Hotel Anthracite, with an excursion train on the Delaware Lackawanna Railroad. Despite being larger, with more activities, the KL&L Convention still has that same casual atmosphere that it had years ago back in Albany. It is a great event to meet fellow railroad historians, and to find something new for the collection.

The convention committee is finalizing a few details about the event, and we will be opening registration soon. Watch the KL&L website and Facebook page for announcements, and registration forms will be included in the next issue of the KL&L News, which will be coming out near the end of January. If you have never attended the convention, make plans to join your fellow collectors and railroad history buffs this year. It is always a great time!

As always, thanks for everyone's ongoing support of Key Lock & Lantern!

Dave Hamilton

KL&L President & Editor

Railroad Event Calendar



Upcoming historical society conventions, special events, railroading shows & auctions. Listings subject to change. Check show web sites before traveling and visit www.klnl.org for updates. See submission guidelines at the end of the calendar.

Look for Advertisements in this Issue & on the Key Lock & Lantern Website for [Events Shown in Blue](http://www.klnl.org)

- Jan 7-9** **Lafayette, IN** - Rail & Road Auctions - Railroadiana Auction
Info: www.BIDRAR.com.
- Jan 10-11** **DeLand, FL** - Florida Rail Fair. Volusia County Fairgrounds
Info: www.gserr.com.
- Jan 18** **Griffith, IN** - Blackhawk NRHS Swap Meet.
Info: <https://www.blackhawkrailwayhistoricalsociety.org>
- Jan 18** **Utica, NY** - TTCS Annual Train Show. Utica Union Station. <https://www.facebook.com/TTCSUticaTrainShow>.
- Jan 24** **La Crosse, WI** - 34th Annual Great Tri-State Rail Sale
Info: <http://www.4000foundation.org>.
- Jan 24-25** **Springfield, MA** - Railroad Hobby Show. Eastern States Expo.
Info: www.railroadhobbyshow.com.
- Feb 7** **Jacksonville, FL** - Golden Spike Enterprises Railroad Show.
Info: www.gserr.com.
- Feb 14** **Boonsboro, MD** - Hagerstown Railroad Museum Train Show.
Info: www.antietamstation.com.

Continued on Page 29

Front Cover: The 2023 Toys for Tots train is ready for a morning departure from the Albany Rensselaer, NY station. Dave Hamilton photo.

Bidders Save on Fees With Brookline Auction Gallery's New Online Platform

Brookline Auction Gallery recently switched to an in-house bidding platform, and its online customers have enjoyed a large savings in buyer's fees. The change also allowed Brookline to run its most recent sale as a timed auction. Several new collections are making their way through the sales, with more to come in the Spring. *Photos, descriptions and prices realized courtesy of Brookline Auction Gallery and do not include buyers premiums and shipping.*



A \$500 bid purchased this 5" tall glass with the Maine Central Railroad "Pinecone" logo etched on one side.



An \$850 bid was needed to buy this CT Ham brass top bell bottom from the Maine Central with red cast MCRR globe.



An Adlake steel lock and matching L&HR RR key from the Lehigh & Hudson River sold for a high bid of \$1800.



A new old stock Washington County Railroad blue cast WCRR globe went to a new collection for \$375.

Continued on Page 20

Railroadiana Auctions - Spring & Fall - Brookline, NH

Railroadiana Consignment Auctions Held Each Spring & Fall

Brookline Auction Gallery LLC - 32 Proctor Hill Rd, Brookline, NH 03033

www.brooklineauctiongallery.com

Scott Czaja - Sales Manager

Next Sale: March 14, 2026



New in-house online bidding platform - We also accept absentee bids via: e-mail & mail
Quality consignments are welcome for future sales - email Scott: sczaja@hotmail.com

Railroad Memories Auctions Continues to Offer Railroadiana from Several Collections

Railroad Memories continues to offer high end railroadiana in its catalog and online auctions, with several well known collections gradually being dispersed to new owners. There is much more to come in upcoming sales, with the usual selection of western material and some from the east coast. *Photos, descriptions and prices realized courtesy of Railroad Memories Auctions and do not include buyers premiums and shipping.*



A \$4500 bid bought this Southern Pacific Mission service plate by Bauscher depicting the Mission Santa Barbara.



A Post & Co. conductor's lantern with plating issues and a blue over clear globe went to a new home for \$725.

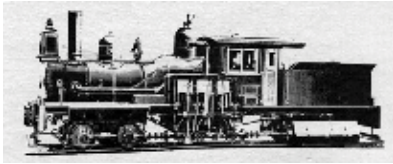


A 36" copper wall mural from a Santa Fe lounge car went to a new collection for a \$3700 high bid.



A \$1750 bid purchased this unusual Santa Fe Needles "FD Inspector" badge with no makers hallmark.

Continued on Page 21



Railroad Memories

Offering Quality Railroadiana Since 1987

Now Accepting Consignments for Upcoming Sales



RARE Santa Fe
Illuminated panel



STL&ATHRR
tapered key



Rare Badges



Beautiful D&RGRR
BT/BB Lantern



D&IRRR
Tapered Key



Santa Fe
Mother Earth Kachina



Builders Plates



Brass lanterns



Presentation Lanterns



Santa Fe Crews
Quarter Clock



Santa Fe
Kachina Plaque



SP Mission Service Plate



W&STPRR
Tapered key



Rare Santa Fe
Badges



More Locks from
the Kidd Museum



V&M RR
Tapered key



Passes Including Colorado



Columbine China

P.O. Box 415

Georgetown, Colorado 80444

Phone: 303-569-5185

Email: railroadmemories@gmail.com Website: www.railroadmemories.com

JM Hobby Supply Adds Several Additional Collections to Ongoing Auction Schedule

The fall auction by JM Hobby Supply & Railroad Artifacts had something for every collector, from top shelf memorabilia to reasonably priced lots. A large collection of model trains rounded out the two day sale. There are more collections on deck for the 2026 auctions, and consignments are still being accepted for upcoming sales. *Photos, descriptions and prices realized courtesy of JM Hobby Supply & Railroad Artifacts and do not include buyers premiums and shipping.*



A \$120 bid purchased this Chicago Indianapolis & Louisville Monon Route alligator match safe with minor issues.



An aluminum Santa Fe Hopi art plaque from the El Capitan train went to a new collection for a high bid of \$2400.



A 1942 Chicago Burlington & Quincy Railroad calendar highlighting the Zephyr train sold for a \$70 bid.



A cast brass logo from the Cleveland Cincinnati Chicago & St. Louis Railway (Big Four Route) sold for a \$475 bid.

Continued on Page 22

JM HOBBY SUPPLY & RAILROAD ARTIFACTS

Railroadiana Auctions

In Conjunction with Ihander Auctioneering

Next Auction: March 28 & 29, 2026

Over 600 Lots of Passes, Timetables, Books, Posters, Keys, Locks, Lanterns, Headlights, Bells, & Model Trains

Highlights of Recent Sales



Sold for \$550



Sold for \$4000



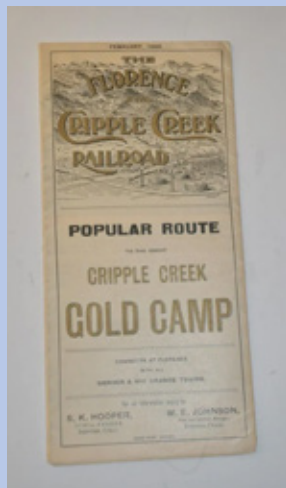
Sold for \$650



Sold for \$1200



Sold for \$400



Sold for \$400



Sold for \$2300



Sold for \$1000

WE OFFER THE LOWEST SELLERS COMMISSIONS AND BUYERS FEES IN THE U.S.A!

SHIPPING IS AT ACTUAL COST....NOT INFLATED!

Call us today to discuss selling your collection at 920-857-9670!

PO Box 25, Luxemburg, WI 54217

Online bidding will be available at www.liveauctioneers.com

Email us at jmhobbysupplyandrrartifacts@gmail.com

Or visit our website at www.jmhobbysupply.com

Rail & Road Auctions Offers High Quality Railroadiana from Several Collections

Rail & Road Auctions continues to offer several collections and additional consignments, with live online auctions held almost monthly, featuring memorabilia of every sort from all over the country. From higher end artifacts to bargain lots for newer collectors, there has been something for everyone in recent auctions, with plenty to come in upcoming sales. *Photos, descriptions and prices realized courtesy of Rail & Road Auctions and do not include buyers premiums and shipping.*



A high bid of \$625 was needed to take home this 24" older style cast iron railroad crossing sign.



A brass conductors lantern by Adams & Westlake with a 4 5/8" clear globe went to a new home for a \$375 bid.



The Baldwin Locomotive Works builders plate from Chesapeake & Ohio 0-8-0 #265 sold for \$1500.



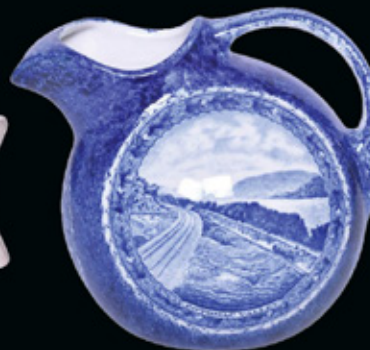
A bid of \$140 was needed to buy this Pennsylvania Railroad conductor cap with keystone logo badge.

Continued on Page 23

RAIL & ROAD AUCTIONS

Now Accepting Consignments for
2026 Railroad & Transportation Auctions

Next Auctions - January 7-9, 2026



View the catalogs on our website & register to bid.
Rail & Road offers online, absentee, and telephone bidding.



RAIL & ROAD AUCTIONS

WWW.BIDRAR.COM

765-412-7926



HOLIDAY TRAIN SHOWS & EXCURSIONS INTRODUCE THE WORLD OF RAILROADING TO A NEW AUDIENCE



As the year comes to a close, the operating season also winds down for heritage railroads, museums, and organizations that share their love of railroading with the public through excursions and train shows. With visions of the Polar Express and toy trains circling the Christmas tree on the minds of children, many groups plan special events that appeal to families at this time of the year. The 2025 holiday season was no exception, with tourist train operators running sold out trips to the North Pole and train shows filled with kids who couldn't take their eyes off the models.

A sold-out Santa Claus train prepares to depart for the North Pole from the Rochester & Genesee Valley Railroad Museum's Industry, NY depot. R&GV RR Museum photo.

At many shows this year, there were dealers of railroadiana set up among the tables of Lego trains and model supplies, offering everything from timetables to lanterns. For many railroad enthusiasts, these shows provide their first exposure to the collecting side of the hobby, and usually lead to a greater interest in railroad history. The participation of railroad historical groups and collectors of railroadiana in model train shows seems to have grown over the past several years, in a refreshing change after a period of decline in that area.



KL&L member William Sternitzke's train show table includes both models and authentic railroadiana.



Train show attendees visit the booth of the Saratoga, Corinth & Hudson Railroad tourist train line.

Continued on Page 13

Holiday Shows & Events

Continued from Page 12

With the conclusion of the season, the volunteers on the heritage railroads and museum operations can briefly rest their feet for a few days, before getting back to work on winter maintenance projects. Another successful year is in the books, thanks to the efforts of the regular volunteers who do everything from putting on the conductor's cap to greet passengers on the Polar Express to staffing a train show table. Their efforts have no doubt paid off in introducing the fascinating world of railroading to a group of future railroad historians!



The National Railroad Museum in Green Bay, WI welcomes thousands of children to ride its Polar Express trains each holiday season. National Railroad Museum photo.



The Penn Central Railroad Historical Society is one of several organizations that exhibit at train shows.



KL&L member Ben Martin offers a variety of lanterns and paper at the Great Train Extravaganza in Albany, NY.



KL&L member Len Gordy puts in the miles to offer railroadiana at many shows throughout the northeast.



Adirondack Railroad volunteers share information about their extensive operations to train show visitors.

Gaithersburg Railroadiana Show Still a “Must Attend” Event for Collectors

Between social media sites and online auctions, these days it is easy to assemble a railroadiana collection without ever leaving home. Despite that fact, most collectors still like to get out and hunt for memorabilia in person, and attending shows is an important part of that routine. For years, the Golden Spike railroadiana show in Gaithersburg, MD has been one that collectors have had on their “must attend” lists, and the event is still going strong.

Held at the Montgomery County Fairgrounds over the first weekend in November each year, the show has a Saturday setup day and public hours on Sunday. Serious collectors know that an early admission pass that includes Saturday is essential for beating the crowd to those rarer artifacts. As a result, in recent years, attendance by weekend pass holders has surpassed that of the more casual Sunday-only visitors. This year was no exception, with the Saturday check-in line reaching out into the parking lot.



Although many shows have changed their format to include both models and memorabilia, the Gaithersburg show is one of the few to remain focused on railroadiana (the Key Lock & Lantern Convention is also in this exclusive club). While it is hard to predict what the future will hold, for now the Gaithersburg show is still the “supermarket of railroadiana.”

Continued on Page 15



Many regular exhibitors were in attendance, along with a good number of new dealers. Several long-time collectors who have not sold at shows in the past also had tables to thin out their collections. There was something for everyone at this year’s show, from rare lanterns and builders plates to reasonably priced timetables. It is almost impossible to go to Gaithersburg and not come home with something!



Photo by Chip Greiner, who donated exhibit space and the table cloth to Key Lock & Lantern. Thanks Chip!





KEY LOCK & LANTERN

Can Help Promote Your
Auction, Show or Event

2800+ Facebook Followers

200+ Daily Website Visitors

520+ Newsletter Subscribers

Contact KL&L at transportsim@aol.com



Registration Opens Soon for 2026 Key Lock & Lantern Convention in Carbondale

Registration forms for the 2026 KL&L Convention will be included in the next issue of the KL&L News. We are once again returning to the Hotel Anthracite in downtown Carbondale, PA, which has become the home of the convention in recent years due to its excellent facilities and friendly staff. The 2026 KL&L Convention will run from Thursday, May 7th through Sunday, May 10th, with all formal activities taking place on Friday and Saturday.

Serious collectors will want to plan on arriving on Thursday, as many of the “parking lot deals” that KL&L is known for take place during unloading. On Friday, we will be returning to the former Delaware & Hudson Penn Division for our train excursion, and are currently finalizing the details of the ride. It is planned to have the same trainset as last year and



the fundraiser auction of donated railroadiana. A buffet dinner will be served in the evening, followed by transportation and industrial history programs.

As always, the Sunday schedule will remain open, to allow those who want to return home for Mother's Day to leave early, or visit local museums and historic sites. Steamtown, the Electric City Trolley Museum, the Lackawanna Coal Mine Tour, and other attractions in nearby Scranton are only twenty minutes away. And, trains on the Reading & Northern, Delaware-Lackawanna, Norfolk Southern, and the Stourbridge Line offer a variety of railfanning options.



Randy Bushart Photo.

utilize Delaware-Lackawanna Railroad locomotives that are repainted into heritage schemes. There will be several photo opportunities as part of the trip.

On Saturday, the Gravity Hall banquet facility at the Hotel Anthracite will be filled with museum-quality transportation history exhibits and dozens of sellers of memorabilia. The 2026 membership meeting of KL&L will be held, along with



As announced in previous issues of the KL&L News, there are a limited number of exhibit tables for the Saturday show available at no charge to historical and collectors groups, courtesy of our sponsor, the NY-PA Collector magazine. If your group is interested in exhibiting, contact Dave Hamilton at transportsim@aol.com.

Put the May 7-10, 2026 dates on your calendar today, and watch the KL&L website, newsletter, and Facebook page for announcements when registration opens. The 2026 Annual Key Lock & Lantern Convention will once again be an event that should not be missed! (*photos continued on Page 17*)





Western New York Railway Historical Society to Hold Winter Train & Toy Show

The Western New York Railway Historical Society will hold its annual winter Train and Toy Show over the weekend of February 14th & 15th. The Events Center at the Erie County Fairgrounds in Hamburg, NY will be filled with operating model train layouts, railroad displays, and over 350 tables of exhibits and vendors.

Local model railroad clubs will be participating in the show, and multiple layouts will be in operation, representing HO, N, O and S scales. There will also be Lego train layouts and a "Thomas the Tank Engine and Friends" play area for the kids. Cars, dolls, toys, and collectibles will also be featured, making this an event for the entire family,



Several guest speakers are lined up to give presentations on both days, and other local historical societies are expected to exhibit at the show. While most vendors typically offer model trains, books, and videos for sale, several railroaders collectors (including members of KL&L) are expected to attend. There is usually some interesting memorabilia to be found among the many tables, and some good deals for those who arrive early.



A recently restored Lehigh Valley locomotive on display at the WNYRHS Williamsville, NY depot museum.

The show is open from 10am to 5pm on Saturday and from 10am to 4pm on Sunday, with an \$8 entry fee for adults and children under 12 admitted for free. All proceeds will benefit the many significant preservation projects of the Western New York Railway Historical Society, which operates the Heritage DiscoverY Center in Buffalo and has restored depots in Williamsville and Orcahrd Park, along with rolling stock at several locations in western New York. For more information, visit the WNYRHS website at <http://www.trainweb.org/wnyrhs>. *Photos by WNYRHS.*



The society's cosmetically restored Pennsylvania Railroad I-1s Class Baldwin decapod steam locomotive No. 4483.

KEY LOCK & LANTERN

**Ads Reach Serious Railroad Enthusiasts
Contact KL&L at transportsim@aol.com**

George Washington Train Show to Be Held by C&O Historical Society in Clifton Forge

The Chesapeake & Ohio Historical Society will be holding its annual George Washington Train show in Clifton Forge, Virginia on March 21st & 22nd. Events will take place at both the C&O Railway Heritage Center on Main Street, and at the Clifton Forge Armory.

The society is excited to announce the return of the multi-location show. An annual fundraiser for the non-profit organization, the event will return to the Clifton Forge Armory in addition to the C&O Railway Heritage Center. For 2026, the C&O Historical Society is excited to continue this traditional event that allows for additional vendor space during the two-day event in Clifton Forge.



The C&O Railway Heritage Center is located at 701 Main Street and the Clifton Forge Armory is at 724 Commercial Avenue. For \$5 admission, guests receive access to both locations that will feature vendors, speakers, food, exhibits, gift shopping, and more. Show hours are 10am to 4pm on Saturday and 12pm to 4pm on Sunday.

For more information about the George Washington Train Show, the C&O Railway Heritage Center, and the Chesapeake & Ohio Historical Society, call 540-862-2210 or visit <https://chessieshop.com>. *News & photos courtesy of C&O Historical Society.*





A New York New Haven & Hartford lantern by Adams & Westlake with green etched globe sold for \$800.



A \$3800 bid took home this 5 3/8" blue cast MCRR globe.



A brass fixed globe lantern cut for the Bangor, Old Town & Milford Railroad of Maine sold for a high bid of \$1900.

KEY LOCK & LANTERN

**Can Help Promote Your
Auction, Show or Event**

Contact KL&L at transportsim@aol.com



An \$875 bid took home this early Chicago & North Western Railway Agent badge listing destination cities.



A Denver & Rio Grande Railroad lock by Slaymaker with matching D&RG key sold for a high bid of \$3200.



A \$15,250 bid was needed to buy this rare Atchison Topeka & Santa Fe "Atchison" oval platter by Bauscher.



A 21" 5-chime steam locomotive whistle stamped CB&Q 4003 on its base went to a new home for \$3500.



An \$1800 bid took home this 22" diameter glass drumhead insert from the Santa Fe Chief train.



A \$90 bid purchased this diesel locomotive number board from a Frisco SD45 renumbered by Burlington Northern.



A Texas & Pacific Railway half step box, fully restored with new paint on the cast T&P lettering sold for \$375.



An 1897 pass from the Alexander & Rich Mountain Railroad in West Virginia sold for a high bid of \$375.



A \$300 bid sent this 1889 Arkansas Midland Railroad pass with ornate locomotive vignette to a new collector.



A \$350 bid purchased this framed Chicago & Alton Railroad advertising print illustrating its luxury passenger trains.



The Alco Schenectady builders plate from Minneapolis & St. Louis Railroad HH600 diesel #D939 sold for \$750.



A Pennsylvania Railroad Police breast badge with F.G. Clover hallmark went to a new collection for \$450.



A \$375 bid purchased this Pennsylvania Railroad tin conductor's box filled with tickets, paperwork & timetables.



A Lackawanna Railroad 6" metal North Pole drinking fountain sign by Henry Giessel sold for a high bid of \$500.



A \$200 bid took home this 6" Wabash Cannonball pattern saucer made by John Maddock & Sons of England.



A 1912 Pennsylvania Lines Thanksgiving Dinner menu with railroad & holiday illustrations sold for a \$200 bid.



A 36" porcelain Soo Line logo sign with a few corner chips went to a new home for a high bid of \$1600.

Southern California Railway Museum to Hold Swap Meet & Pacific Electric Day

The Southern California Railway Museum (formerly known as the Orange Empire Railway Museum) will hold its annual spring outdoor railroadiana swap meet on March 14, 2026, on the grounds of the museum in Perris, CA. Vendors will be selling authentic railroad memorabilia, collectibles, artwork, books, and model trains. This event is southern California's largest outdoor railroad swap meet, with flea market style spaces available to exhibitors for a \$25 fee.

In addition to vendors, several railroad historians and preservationists will be on hand to present information about the history of railroading in southern California. The event is held in conjunction with the museum's "Pacific Electric Day," celebrating the history of the red interurban trolley cars that were once a familiar sight in the region.



Vendor space is available on a first-come basis, with setup beginning at 7am at the back gate on Mapes Road. Dealers must bring their own tables, chairs, and tents, and may pay the \$25 fee upon arrival.

Founded in 1956 by members of the Southern California Division of the Electric Railroaders Association, the museum maintains a collection of over 35 pieces of equipment from the Pacific Electric Railway, 25 Los Angeles Railway cars, and rolling stock from other regional electric railways. Over the years, this collection has been supplemented by diesel locomotives and cars from the Union Pacific, the Santa Fe, and the Southern Pacific railroads.

For more information about the Southern California Railway Museum, the swap meet, and other upcoming events, visit their website at <https://socalrailway.org>. *Photos courtesy of Southern California Railway Museum.*



The Mainline "Blimp" Train #418 & #498 will depart on the hour between 11am and 4pm, while Mainline Pacific Electric #717 will run on the half hour between 11:30am and 4:30pm. The Birney Loop Line #332 will depart for rides on demand between 11am and 4pm. Swap Meet hours are 9am to 2pm. Admission to the swap meet is \$10 for adults and \$9 for children, with tickets that include the trolley rides available for \$15 for adults and \$14 for children.



Jazz Performances Return to Lake Superior Railroad Museum During Winter Months

The winter months are usually the “off season” for railroad museums in the northern half of the United States and Canada, with less tourist travel taking place and cold weather limiting their activities. The Lake Superior Railroad Museum in Duluth, MN is certainly in the heart of snow country, but with a large indoor exhibit space, it is only a matter of holding events to encourage visitors to brave the elements and make a winter visit.



Beginning during the month of January and continuing through April, the museum will be hosting Jazz concerts on each Saturday afternoon, from 3-6pm. The Trackside Depot Jazz Band will perform live in the train shed, along side the museum’s collection of historic equipment.

The music of Bennie Goodman and other classic musicians will echo throughout the building, along with other selections from the past and modern eras of jazz. Museum Executive Director Ken Buehler will add some railroad history into the day’s performance, with his railroad stories. Admission to the event is \$7 per person, which includes entry to the museum.



The Lake Superior Railroad Museum is the main attraction in the restored Duluth Union Depot, with a large collection of rolling stock displayed along the former platforms. With interactive exhibits about the region’s transportation history, the museum appeals to both serious historians and family members alike.

From Memorial Day through mid-October, excursion trains of the North Shore Scenic Railroad operate from the station, utilizing historic equipment from the museum’s collection. A summer or fall visit to the museum can include a ride on this scenic trip on the Lakefront Line along Lake Superior.



With all indoor exhibits, the museum is open year round, seven days a week, from 10am to 5pm in the winter and from 10am to 6pm in the summer. It is closed on major holidays and any time the Duluth Transit Authority shuts down bus service due to snow. For more information, visit the museum website at <https://lsrm.org>. *Photos courtesy of LSRM.*

KEY LOCK & LANTERN

Ads Reach Serious Railroad Enthusiasts
Contact KL&L at transportsim@aol.com

Hagerstown Model Railroad Museum to Hold Train Sale to Benefit Antietam Station

The Hagerstown Model Railroad Museum will be holding its semi-annual train sale on Saturday, February 14, 2026, at the Washington County Ag Center in Boonsboro, MD. The sale runs from 9am to 1:30pm, with the \$5 admission fee going to support the ongoing operation of the group's museum in the former Antietam, MD train station.

The organization dates back to the 1930s, when it was formed as a model railroad club, with layouts and displays at the fairgrounds. After their space at the fair was no longer available, the Town of Sharpsburg leased the Antietam, MD station building to the group, with the stipulation that it be restored as a museum. Since that time, the station has housed a large model railroad layout and railroad history exhibits.

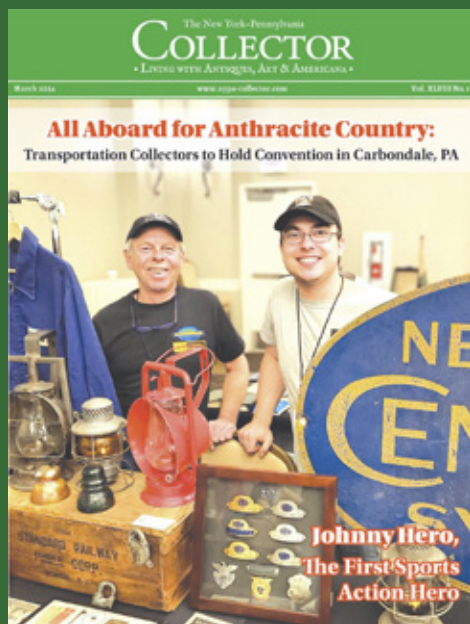
For more information about the Hagerstown Model Railroad Museum and the train show, visit the club website at <https://antietamstation.com>. *News & photos from the Hagerstown Model Railroad Museum.*



The New York-Pennsylvania COLLECTOR

Living with Antiques, Art & Americana

A Monthly Publication Featuring News & Articles
About Antique Collecting & History



Many types of railroad memorabilia are also shared with other areas of antique collecting, and railroad collectors may find themselves bidding at auction against an autograph, advertising, or tool collector. One long-time collector who specializes in selling railroad postcards is known as the "postcard guy," and is referred to as the "railroad guy" at postcard shows. From padlocks to occupational shaving mugs, the broad overlap of railroadiana with other collecting categories certainly adds to its popularity.

Collectors who would like to enter the world of railroad artifacts, or just pick up an example piece or two, will find that there is no better time than the present to get started. Several large collections are currently working their way through the auction

18 - April 2025 - New York-Pennsylvania Collector

Get Onboard with Railroading's Past

Continued from Page 17

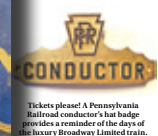
it organization dedicated to the preservation of transportation history and memorabilia. There are over 80 issues of the group's newsletters available for viewing and downloading on

a Collector

Time Like the Present to Get Onboard with Railroading's Past



The Key Lock & Lantern Convention offers the opportunity to network with other historians and view museum-quality exhibits of memorabilia.



Tickets please! A Pennsylvania Railroad conductor's hat badge provides a reminder of the days of the luxury Broadway Limited train.

Railroadiana collections often feature larger artifacts such as signs and locomotive parts. This Pennsylvania Railroad station sign is from a junction near Buffalo.

houses that specialize in railroadiana, and many dealers at shows have recently added new finds to their stock. Although higher end memorabilia still commands top dollar, many serious collectors are thinning out to make room on the shelf for these new purchases, and common artifacts are now selling for more reasonable prices.

Needless to say, it is important to first acquire some basic knowledge before bidding at an auction or making a deal at a show. There are many railroad-theme decorations, reproductions, and fakes out there, masquerading as genuine artifacts. Experienced collectors properly identify



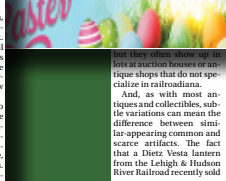
A piece of memorabilia sought after by collectors of railroadiana, stocks, and autographs: a New York & Hudson RR certificate signed by William Vanderbilt and Cornelius Vanderbilt II.



It didn't take long for convenient transportation by train to create suburbs around major cities, as illustrated by this 1865 Hudson River Railroad commuter ticket.



Streetcar and bus tokens offer an inexpensive way to add memorabilia from this classic form of transportation to a collection.



New York Central & Hudson River Railroad lantern appeals to both railroad enthusiasts and collectors. Lanterns from Rochester's Herz Headlight Company.

an auction for \$3,600 doesn't mean that the dozens of New York Central Vestas that are currently hanging in antique shops are a bargain for \$150. Of course, the answer to the question of "what is it worth?" is simply whatever makes both the buyer and seller happy.

Continued on Page 16

New York-Pennsylvania Collector - April 2025 - 17



- Auction & Show Listings
- Club Meetings & Events
- Identification & Fakes
- Antique Restoration Tips
- Museums & Historic Sites
- Dealer & Flea Market Ads

Read Current & Past
Issues Online at:

www.nypa-collector.com

NYPACollector

CLASSIFIED ADS

Classified ad listings are free for Key Lock & Lantern members. Ad size must fit in four lines, and must include a name and contact email address (the word "at" may be substituted for "@" in the email address, if desired) or website address. A maximum of two ads per person may be run at the same time. Send ads to Dave Hamilton at transportsim@aol.com.

Auctions

Brookline Auction Gallery. Brookline, NH. Railroadiana consignment & estate auctions. Contact sales manager Scott Czaja at sczaja@hotmail.com or visit www.tagtown.net.

JM Hobby Supply & Railroad Artifacts. Luxemburg, WI. Railroadiana consignment & estate auctions. Contact John DeBeck at jmhobbysupplyandrrartifacts@gmail.com or visit www.jmhobbysupply.com.

Railroad Memories. Georgetown, CO. Online consignment & estate auctions. Contact Sue Knous at railroadmemories@gmail.com or visit www.railroadmemories.com.

Rail & Road Auctions. Lafayette, IN. Online railroadiana auctions. Contact Derek Thomas at info@RARAuctions.com or visit <https://rarauctions.com>.

Locks & Keys

Wanted: Switch Key from the Baltimore Transit Company (B T Co.) Will pay a good price for a key in decent condition. Dan Allen: [NJSRR\(at\)aol.com](mailto:NJSRR(at)aol.com).

Wanted: Locks - fancy cast back railroad switch locks. Warren Nyerges: email warrennyergesjr@hotmail.com or visit www.antiquerailroadlock.com.

Locomotive & Rolling Stock Hardware

Builder's Plates for Sale. Original steam, diesel & electric builder's & number plates. Contact us for a current list of plates. Ron Muldowney: rjmuldowney@comcast.net.

Railroadiana Dealers

Times Treasures Railroad & Country Collectibles on Ruby Lane. All types of railroadiana, with new items added on a regular basis. <http://www.rubylane.com/shop/timestreasures>

Timetables & Paper

Wanted: Interested in buying railroad paper collections, especially pre-1950 public and employee timetables, passes, name train and travel brochures and dining car menus. No collection too small or large to be of interest. Willing to travel to purchase and pick-up. 45 years in the railroadiana collecting hobby and strict confidence assured. Please contact Doug McIntyre at dm021949@aol.com.

Wanted: Delaware & Hudson RR Employee Timetable #3 dated April 28, 1940. Also, anything related to Wayland, MA, on the Boston & Maine and Central Mass Railroad. Contact Rick Conard at RRConard@earthlink.net

Trolleys & Transit

Wanted: Photos of Syracuse, NY trolley car #1024 & trolley cars around Syracuse University & Archbold Stadium. Dave Hamilton: transportsim@aol.com.

Want Ads Are Back!

*Free for KL&L
Members!*

*Read Submission
Guidelines & Send to
the Editor!*

The Bi-Monthly Digital
KEY LOCK & LANTERN NEWS
Sent by Email Link to 520+ Subscribers
Visible to 200+ Daily Website Visitors
Appears in Internet Searches
Submit your ad to: transportsim@aol.com

- Feb 14-15** **Buffalo, NY** - WNYRHS Greater Buffalo Train Show
Info: www.wnyrhs.org.
- Feb 20-21** **Fletcher, NC** - Asheville Train Show - WNC Agricultural Center
Info: www.asheville-trainshow.com.
- Feb 21-22** **Allentown, PA** - 2026 Spring Thaw Train Show
Info: www.allentowntrainmeet.com.
- Feb 21** **Houston, TX** - Greater Houston Model Train Show
Info: <http://sanjacmodeltrains.org/>.
- Feb 22** **Buena Park, CA** - California Express Railroddiana Show.
Info: www.californiaexpress.net.
- Feb 28** **Portland, OR** - Willamette Model Railroad Club Swap Meet.
Info: <https://wmrrc.com/>.
- Feb 28** **St. Cloud, MN** - 2026 Granite City Railroad Show.
Info: www.granitecitytrainshow.com.
- Feb 28-Mar 1** **Colorado Spr, CO** - 2026 Train Expo Colorado
Info: www.tecoshow.org.
- Mar 1** **Rochester, NY** - Genesee Society of Model Engineers Train Show.
Info: www.gsme.org
- Mar 1** **Clark, NJ** - Jersey Central Chapter NRHS Train Show.
Info: www.jcrhs.org.
- Mar 8** **Spokane, WA** - 2026 River City Modelers Train Show.
Info: www.rivercitymodelers.org.
- Mar 14** **Brookline, NH** - Brookline Auction Gallery Railroddiana Auction
Info: www.brooklineauctiongallery.com.
- Mar 14** **Harrisburg, PA** - 2026 Harrisburg NRHS Railroad Show
Info: <http://harrisburgnrhs.org>.
- Mar 14** **Perris, CA** - Railroddiana Swap Meet. Southern California Railway Museum.
Info: <https://socalrailway.org>.
- Mar 14** **St. Albans, VT** - Vermont Rails Model Railroad Show.
Info: www.nwvrrailroad.org.
- Mar 28-29** **Luxemburg, WI** - JM Hobby Supply Railroddiana Auction
Info: www.jmhobbysupply.com.

Send listings to: transportsim@aol.com

There is no charge for calendar listings. Train shows must include dealers of authentic railroad memorabilia or related material, and auctions must include at least 20 lots of railroddiana. Other events must be directly related to railroad history (special exhibitions, lecture programs, conventions, limited excursions, etc.). Regular monthly group meetings, model train meets & scheduled tourist train trips are not eligible, unless related to a special event. Events are listed space permitting, at the editor's discretion. Listings are subject to error or change. Always check show web sites before traveling.

Visit www.klnl.org for More Listings

Key Lock & Lantern News & Information

Key Lock & Lantern Email List

If you are not already receiving the link to this newsletter directly from KL&L, go to the "Contact KL&L" page on the Key Lock & Lantern website at www.klnl.org and sign up for our email list. You will receive links to the *KL&L News* when it is published and occasional notifications of events of interest to members. The email list is hosted by MailChimp, which makes it easy to unsubscribe at any time, and KL&L never sells or shares its email list with outside parties. Don't miss important news and announcements - sign up today!

KL&L Facebook Page

For current news and announcements, visit the Key Lock & Lantern page on Facebook at <https://www.facebook.com/railroddiana>. Up to date information about the Key Lock & Lantern Convention, newsletter & magazine publication, and upcoming shows and auctions is posted on the page. There are also hundreds of photos of modern & historical railroad operations, railroad & transportation memorabilia, and views of recent shows and events. Be sure to "follow" the page, so that posts show up in your news feed.

KL&L YouTube Channel

The Key Lock & Lantern YouTube channel showcases videos of modern and historical railroad operations, steam train excursions, and KL&L Convention highlights. Visit the channel at <https://www.youtube.com/user/KeyLockLantern>. Be sure to hit the subscribe button and leave comments on the videos that you enjoyed!

Want Ads for KL&L Members

As noted in previous issues, the "Want Ad" section of the *KL&L News* is undergoing an update to remove outdated notices. If you would like to submit an ad for inclusion in future issues, contact KL&L editor Dave Hamilton at transportsim@aol.com. Basic want ads are free for current Key Lock & Lantern members.

Member Address Changes & Corrections

The *Key Lock & Lantern* magazine is sent via First Class Mail and is therefore forwarded by the U.S. Postal Service for the designated period following an address change. However, due to the frequency of publication of the magazine, the time for forwarding may expire in between issues, and your magazine may be returned to KL&L. Please make sure that Key Lock & Lantern is on your list of organizations to notify in the event of a change of address. Also, please check your mailing label when receiving your copy of the magazine, and advise KL&L if any corrections are needed. Contact Marie Brainard at j944wb@aol.com if changes are required.



For News & Information, Visit the KL&L Page on Facebook. Use the link at www.klnl.org.

KEY LOCK & LANTERN

Can Help Promote Your
Auction, Show or Event

With Advertising in KL&L Publications

2800+ Facebook Followers

200+ Daily Website Visits

520+ Newsletter Subscribers

Contact KL&L Editor Dave Hamilton at
transportsim@aol.com



**All submissions for the KL&L magazine,
news items for the digital KL&L News
& general inquiries should be sent to:**

KL&L President & Editor
David Hamilton
E-mail: transportsim@aol.com

**Send membership applications, dues
payments, and address changes to:**

KL&L Chairman John Brainard &
VP-Membership Marie Brainard
E-mail: j944wb@aol.com

Join or Renew Your
KEY LOCK & LANTERN
Membership Online at
www.klnl.org

KL&L Membership Form (Issues 183-186)

Please make check or money order payable to Key, Lock & Lantern, Inc. and forward to:
Marie Brainard, KL&L Membership, 35 Nordhoff Place, Englewood, NJ 07631-4810

Name _____

Representing (business or museum, if applicable) _____

Address _____

City _____ State/Prov _____ Zip/Mail Code _____

Phone _____ E-mail _____

Basic membership at \$40 per year (1st Class mailing in USA) or \$60 per year (non-USA).....\$ _____

Additional Donation.....\$ _____

Enclosed is my check / money order payable to Key Lock & Lantern, Inc. for.....\$ _____

Membership in KL&L includes 4 issues of the printed magazine, special member rates for KL&L Convention registration, and access to "members only" content on the KL&L website. New members joining before September will receive all previously published magazines for the year, and will be due for renewal in the following January. New members joining in September or later will have their dues applied to the next membership period, beginning with the Jan/Feb/Mar issue, unless otherwise requested.