



# KEY LOCK & LANTERN NEWS



May/Jun 2025

Issue No.86

*The Bi-Monthly Digital Supplement to Key Lock & Lantern Magazine*

## 2025 Key Lock & Lantern Convention

Railroadiana  
Auction Prices

Union Pacific Big  
Boy Cab Rides

B&O Railroad  
Museum Expansion







The Bi-Monthly Digital Supplement to Key Lock & Lantern Magazine  
WWW.KLNL.ORG

## Key, Lock & Lantern

A non-profit membership corporation dedicated to the preservation of transportation history and railroad memorabilia

*The mission of Key, Lock & Lantern is to gather and publish information on the history of the transportation industry, and to support the preservation of railroad artifacts. KL&L members have an interest in all aspects of railroad & transportation history, from research and preservation projects to the conservation and restoration of all types of historical memorabilia. Originally formed in 1966, Key, Lock & Lantern, Inc. was officially incorporated in 1988 as a non-profit, educational, membership corporation in the State of New Jersey, under the provisions of Section 501(c)(3) of the United States Internal Revenue Code. Membership is open to anyone with an interest in transportation history and in achieving the goals of the organization.*

## Officers & Trustees

### Chairman of the Board

John Brainard  
j944wb@aol.com

### President & Editor

David Hamilton  
transportsim@aol.com

### VP- Membership / Treasurer

Marie Brainard  
j944wb@aol.com

### Secretary

Jeremy Tuke

### Chaplain / Sgt at Arms

Chip Greiner

### Historian

Peter Gores

### Trustees at Large

Lyman Gray, Sam Lombardi, Joel Shaw, Leonard Gordy, Bob Lipman, Randy Bushart, William Sternitzke, Bill Roberts, Bob Myers, Joey Senese, Matthew Bushart, Michael Decker

**www.klnl.org**



For Current News  
"Like" KL&L on

**facebook**

## May/June 2025 Issue #86

From the President's Desk .....	3
Railroad Event Calendar .....	3
Brookline Railroadiana Auction .....	4
Railroad Memories Auction .....	6
JM Hobby Railroadiana Auction .....	8
Rail & Road Auction Report .....	10
2025 KL&L Convention Report .....	12
Remembering Sam Ferrara .....	19
Union Pacific Big Boy Cab Rides .....	24
UP Abraham Lincoln Locomotive .....	25
B&O Railroad Museum Plans Expansion .....	26
Classified Ads .....	28

**KL&L News Editor.....David Hamilton**

**Send in News & Photos to: transportsim@aol.com**

The Key, Lock & Lantern News is published bi-monthly as a digital supplement to the quarterly Key, Lock & Lantern magazine. Recipients may repost or forward complete and unmodified copies of this newsletter to other hobbyists and websites, but its content may not otherwise be copied or distributed without the permission of the KL&L Board of Trustees. Copyrights are held by the respective authors and photographers. Excerpts of news items may be published with the credit line "Key, Lock & Lantern News." Descriptions, photos, and prices in auction reports and ads are supplied by the auction companies and do not represent an evaluation or endorsement of value or authenticity by Key, Lock & Lantern.

Annual membership dues for Key, Lock & Lantern are \$40 for residents of the USA, and \$60 for outside of the USA (by money order or electronic payment in US funds). Members receive four issues of the quarterly KL&L magazine, delivered via first class mail. Applications for membership & address changes should be forwarded to the VP-Membership at the e-mail address listed at right. Online membership forms and dues payment via Paypal are available at [www.klnl.org](http://www.klnl.org).

Contributions of articles, photos, and news may be forwarded to the editor at the e-mail address listed at right. The submission of material in digital format is preferred, with text files in DOC, TXT, or PDF format, and images in JPG, TIF, BMP or GIF format. Digital files may be sent by e-mail or on a computer CD or flash drive. Please contact the editor regarding optimum file sizes and formats, or for the submission of hard copy material.

By submitting material to Key, Lock & Lantern, the contributor grants permission for use in any edition of the KL&L magazine, digital newsletter, websites, and other publications. All material will be retained by KL&L for future use, unless the contributor specifically requests that it be returned, and includes a suitable, self-addressed, stamped envelope. Current deadlines are listed in the Key, Lock & Lantern Advertising Guide, which is available on the KL&L website at [www.klnl.org](http://www.klnl.org), or by contacting the editor.

## From the President's Desk.....



Another KL&L convention is in the history books, with over 150 transportation historians and collectors gathering in Carbondale for the weekend. Despite some rainy weather on Friday, everyone enjoyed the excursion on the Delaware-Lackawanna RR to Mount Pocono, and getting together in the Canary Lounge in the evening. Many members put together exhibits this year, with numerous excellent displays competing for the "Best in Show" award.

Of course, there was no shortage of memorabilia for sale or trade at the Saturday show, and the fundraiser auction table was overflowing with donated items. After a delicious buffet dinner, attendees who had only known John Benson through his sales on eBay as "Mr. Slides" discovered that he puts on a very entertaining program, when he presented photos from across North America.

Overall, it was a great weekend, from meeting up with old friends on Thursday night, to telling a few more railroad stories at breakfast on Sunday morning. While there may be bigger railroadiana shows, other train rides, and opportunities to network at railroad club meetings, the KL&L convention is the only event that combines the best aspects of all those activities.

The staff of the Hotel Anthracite deserve to be recognized for going above and beyond to make us feel welcome and accommodating all of our special requests. Genesee Valley Transportation, and its president David Monte Verde, made our excursion possible by providing financial support, and a donation by the New York-Pennsylvania Collector magazine allowed KL&L to keep registration fees reasonable.

Of course, it was the members who brought rare artifacts to display, hauled in boxes of memorabilia for sale, and donated items for the fundraiser auction that made the convention a huge success. And, it was the countless of hours of work by John & Marie Brainard that brought all the elements of a great convention together.

Thanks to everyone who attended, and I hope to see even more members next year. And as always, thanks for your ongoing support of KL&L!

*Dave Hamilton*

KL&L President & Editor

## Railroad Event Calendar



**Upcoming historical society conventions, special events, railroadiana shows & auctions. Listings subject to change. Check show web sites before traveling and visit [www.klnl.org](http://www.klnl.org) for updates. See submission guidelines at the end of the calendar.**

**Look for Advertisements in this Issue & on the Key Lock & Lantern Website for [Events Shown in Blue](http://www.klnl.org)**

- Jun 10-15**    **Chicago, IL** - Santa Fe Historical Society Annual Convention.  
Info: [www.atsfrr.com](http://www.atsfrr.com).
- Jun 11-13**    **Lafayette, IN** - Railroadiana & Transportation Auction. Rail & Road Auctions.  
Info: <https://rarauctions.com>
- Jun 11-14**    **Ontario, CA** - Railway & Locomotive Historical Society Convention.  
Info: <http://www.rlhs.org>.
- Jun 12-15**    **Radford, VA** - Norfolk & Western Historical Society Convention  
Info: [www.nwhs.org](http://www.nwhs.org).
- Jun 15**        **Georgetown, CO** - Railroadiana Consignment Auction. Railroad Memories.  
Info: [www.railroadmemories.com](http://www.railroadmemories.com)
- Jun 15**        **Jerseyville, ON** - Hamilton Ancaster Train Show & Sale  
Info: <https://www.bmrc.ca/>.
- Jun 19-22**    **Moses Lake, WA** - Milwaukee Road Historical Association Convention..  
Info: [www.mrha.com/](http://www.mrha.com/).
- Jun 21-22**    **Dayton, OH** - Miami Valley Rail Festival at Carrillon Park.  
Info: [www.railfestival.com](http://www.railfestival.com).

*Continued on Page 29*

Front Cover: The 2025 KL&L Excursion exits the Nay Aug Tunnel on the Delaware Lackawanna RR. William Sternitzke photo.



# Brookline Auction Gallery Sells a Variety of Large Collections and Consignments

A variety of rare and unusual railroadiana continues to flow through the Brookline Auction Gallery, with several large collections being sold. While many auctions have shifted to an online-only format, Brookline continues to hold onsite sales, with online bidding also offered. *Photos, descriptions and prices realized courtesy of Brookline Auction Gallery and do not include buyers premiums and shipping.*



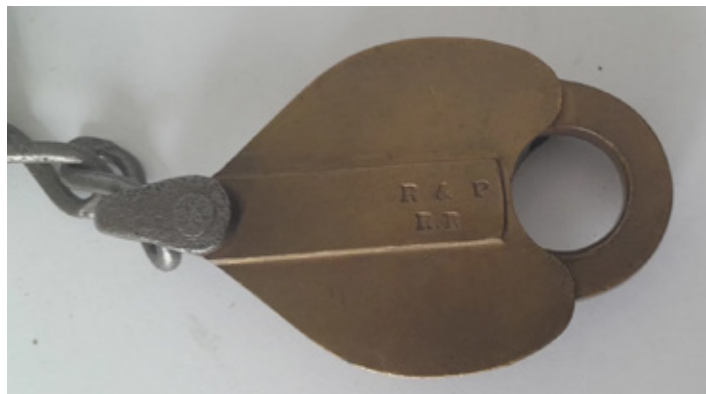
*A Lehigh & Hudson River Railway lock by Fraim with an L&HR RR Adlake key sold for a \$950 high bid.*



*A \$1600 bid took home this Brady's Patent lantern marked for the Portland Saco & Portsmouth Railroad.*



*A \$350 bid was needed to buy this Ontario Car Ferry Company mug with a Montreal makers mark.*



*A Rochester & Pittsburgh Railroad brass heart lock by Romer went to a new home for a high bid of \$800.*

*Continued on Page 20*

# Railroadiana Auctions - Spring & Fall - Brookline, NH

Railroadiana Consignment Auctions Held Each Spring & Fall

Brookline Auction Gallery LLC - 32 Proctor Hill Rd, Brookline, NH 03033

**[www.brooklineauctiongallery.com](http://www.brooklineauctiongallery.com)**

Scott Czaja - Sales Manager

## ***Next Sale: October, 2025***

### ***Now Accepting Consignments for the Fall Auction***



In-house online bidding this fall - We also accept absentee bids via: e-mail & mail  
Quality consignments are welcome for future sales - email Scott: [sczaja@hotmail.com](mailto:sczaja@hotmail.com)



# Railroad Memories Offers Scarce Artifacts in February Railroadiana Catalog Auction

Railroad Memories continues to offer high end railroadiana in its catalog and online auctions, with several well known collections gradually being dispersed to new owners. There is much more to come in upcoming sales, with the usual selection of western material and some from the east coast. *Photos, descriptions and prices realized courtesy of Railroad Memories Auctions and do not include buyers premiums and shipping.*



*A Union Pacific Railroad Cheyenne Wyoming fire department badge went to a new home for \$600.*



*A \$1250 bid purchased this Colorado Springs & Cripple Creek District Adlake lantern with unmarked globe.*

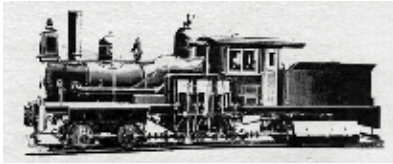


*A \$1050 bid was needed to buy this Illinois Central Railroad 10 3/4" French Quarter service plate by Bauscher.*



*A Duluth Missabe & Iron Range conductor cap made by Wentworth-Forman sold for a high bid of \$575.*

*Continued on Page 21*



# Railroad Memories

Offering Quality Railroadiana Since 1987

Auction 122 - June 15, 2025



RARE Santa Fe  
Illuminated panel



STL&ATHRR  
tapered key



Rare Badges



Beautiful D&RGRR  
BT/BB Lantern



D&IRRR  
Tapered Key



Santa Fe  
Mother Earth Kachina



Builders Plates



Brass lanterns



Presentation Lanterns



Santa Fe Crews  
Quarter Clock



Santa Fe  
Kachina Plaque



SP Mission Service Plate



W&STPRR  
Tapered key



Rare Santa Fe  
Badges



More Locks from  
the Kidd Museum



V&M RR  
Tapered key



Passes Including Colorado



Columbine China

P.O. Box 415

Georgetown, Colorado 80444

Phone: 303-569-5185

Email: [railroadmemories@gmail.com](mailto:railroadmemories@gmail.com) Website: [www.railroadmemories.com](http://www.railroadmemories.com)



# Several Collections & Many Consignments Sold in JM Hobby Supply Railroadiana Sale

The spring auction by JM Hobby Supply & Railroad Artifacts had something for every collector, from top shelf memorabilia to reasonably priced lots. A large collection of model trains rounded out the two day sale. There are more collections on deck for the spring auction, and consignments are still being accepted for upcoming sales. *Photos, descriptions and prices realized courtesy of JM Hobby Supply & Railroad Artifacts and do not include buyers premiums and shipping.*



A Conrail railroad police badge made by Edelmanns of Farmingdale, NY sold for a high bid of \$140.



A \$1400 bid purchased this Erie Railroad #39 lantern by CT Ham with a matching green cast Erie RR globe.



A bid of \$150 was needed to take home this Chicago Burlington & Quincy locomotive diagram book.



A restored and working electrified Adlake cannonball marker lamp went to a new collector for a \$130 bid.

*Continued on Page 22*



# JM HOBBY SUPPLY & RAILROAD ARTIFACTS

## Railroadiana Auctions

In Conjunction with Ihander Auctioneering

Two Day Sale of Hardware, Paper, & Model Trains

**July 26-27, 2025**



**WE OFFER THE LOWEST SELLERS COMMISSIONS AND BUYERS FEES IN THE U.S.A!**

**SHIPPING IS AT ACTUAL COST....NOT INFLATED!**

Call us today to discuss selling your collection at 920-857-9670!

PO Box 25, Luxemburg, WI 54217

Online bidding will be available on Hi-Bid

Email us at [jmhobbysupplyandrrartifacts@gmail.com](mailto:jmhobbysupplyandrrartifacts@gmail.com)

Or visit our website at [www.jmhobbysupply.com](http://www.jmhobbysupply.com)



# A Constant Stream of Railroad Memorabilia Comes Through Rail & Road Auctions

Rail & Road Auctions is not slowing down, with live online auctions held monthly, featuring memorabilia of every sort from all over the country. From higher end artifacts to bargain lots for newer collectors, there has been something for everyone in recent auctions, with plenty to come in upcoming sales. *Photos, descriptions and prices realized courtesy of Rail & Road Auctions and do not include buyers premiums and shipping.*



*A \$190 bid sent this 30" Norfolk & Western Railway aluminum logo sign home to a new collection.*



*A New York Ontario & Western Railway Adlake classification lamp sold for a high bid of \$550.*



*An 1884 Detroit Lansing & Northern RR and 1887 Chicago & West Michigan Railway timetable sold for \$120.*



*A \$3100 bid was needed to buy this Baldwin Locomotive Works builders plate from Pennsylvania RR 2-8-0 #9889.*

*Continued on Page 23*



# RAIL & ROAD AUCTIONS

Now Accepting Consignments for  
2025 Railroad & Transportation Auctions

Next Auctions - June 11-13, 2025



View the catalogs on our website & register to bid.  
Rail & Road offers online, absentee, and telephone bidding.



## RAIL & ROAD AUCTIONS

[WWW.BIDRAR.COM](http://WWW.BIDRAR.COM)

765-412-7926





# Historians & Collectors Gather in Anthracite Country for the 2025 KL&L Convention



The 53rd annual Key Lock & Lantern Convention was held over the weekend of May 8-11, 2025 at the Hotel Anthracite in downtown Carbondale, PA. The area is filled with museums and sites related to the fascinating transportation and industrial history of the region, making it the perfect location for the convention. KL&L members and guests traveled from across the country, but the members who came from Arizona had their mileage beat by two attendees from England.

Despite rainy weather, riders on the Friday excursion train enjoyed a trip from Scranton to Mount Pocono on the former Delaware Lackawanna & Western Railroad mainline. Thanks to the generous support of Genesee Valley Transportation, KL&L members rode in the Delaware-Lackawanna Railroad inspection train, which consists of a variety of historic rolling

stock. From a former Erie Lackawanna Comet commuter coach and a DL&W caboose, to the luxury City of Lima Pullman sleeper and the EL #2 business car, a variety of accommodations were available to passengers.

Over 150 collectors and historians attended the show on Saturday morning, with over sixty exhibit and sales tables filling the Gravity Hall banquet room at the hotel. While there was plenty of memorabilia for sale or trade, there were a larger than usual number of museum-quality exhibits at this year's event. There were many excellent displays for attendees to cast votes for, but the extensive Long Island Rail Road exhibit by Steve Melrose took home the "Best in Show" award.

*Continued on Page 13*



*Photo by Kim Williams*



# 2025 KL&L Convention

Continued from Page 12

Following the annual KL&L membership meeting and a lively fundraiser auction, convention goers enjoyed a buffet dinner at the Hotel Anthracite. After dinner, a slide show featuring railroads from across the continent was presented by John Benson, better known to railfans as “Mr. Slides.” The weather had dried out, so many attendees took advantage of the hotel’s courtyard to share railroad stories and smoke cigars.



*A huge variety of railroadiana was offered for sale or trade in the Hotel Anthracite Gravity Hall on Saturday.*

On Sunday, the schedule was left open for visits to nearby museums and historic sites, and many people did some train chasing on the way home or checked out local antique shops. As always, almost everyone who attended managed to take home something new for their collection, made some new friends, and caught up with some old ones. The convention will be back in the same location next year, over the weekend of May 7-10, 2026, so mark your calendar!

*Continued on Page 14*



*John Benson, known to railfans as “Mr. Slides,” presented an entertaining program covering a variety of subjects.*



*Steve Melrose presented an extensive exhibit of memorabilia from the Long Island Rail Road.*



*Everyone who attended the KL&L Convention had the opportunity to take home something for the collection.*





*The Key Lock & Lantern excursion train makes a lunch stop at the Mount Pocono station platform. Kim Williams photo.*



*Genesee Valley Transportation president David Monte Verde welcomes passengers aboard the EL #2.*



*Key Lock & Lantern excursion passengers enjoy the view from the cupola in the original DL&W shop built caboose.*



*Rainy weather didn't stop KL&L excursions passengers from enjoying a ride on the back platform. Kim Williams photo.*



*Key Lock & Lantern excursion passengers ride in style aboard the Erie Lackawanna #2 business car.*

Continued on Page 15





*Excursion passengers detrain at the Pocono Summit station for a photo runby on the return trip.*



*The rain changed to a light drizzle in the late afternoon, just in time for the photo runby at Pocono Summit.*



*The Delaware-Lackawanna Railroad crew assists passengers as they disembark at Bridge 60.*



*There is nothing quite like a sitting around a warm caboose stove on a cool and rainy spring day.*



*KL&L Convention organizers John & Marie Brainard get a short break to take a ride on the EL #2. Bob Bombel photo.*

Continued on Page 16





Friday evening trading takes place at the Canary Lounge in the Hotel Anthracite with the help of some liquid courage.



Sam Ferrara's KL&L Convention award lantern is passed along to new caretakers John & Marie Brainard.



Steve Melrose receives the "Best in Show" award for his amazing display of Long Island Rail Road artifacts.



Lingering rain showers moved the Friday evening trading and bull sessions in from the courtyard to the lounge.



The annual KL&L fundraiser auction is a lighthearted event that helps the convention operate on a break even basis.

Continued on Page 17





*There were many excellent exhibits at this year's convention, with a mix of old and modern subjects.*



*The doors are open and it is time to make some deals at the Key Lock & Lantern show on Saturday.*



*The Gravity Hall at the Hotel Anthracite was filled with over sixty tables of displays and memorabilia for sale.*



*Key Lock & Lantern members offered a variety of railroadiana for sale at the Saturday show.*



*Locomotive builder's plates were very well represented at this year's Key Lock & Lantern Convention.*



*KL&L show attendees enjoy 6000 square feet of transportation history exhibits and memorabilia for sale.*

*Continued on Page 18*





*There were plenty of deals to be made with reputable sellers at the Key Lock & Lantern Convention.*



*A large display of Delaware Lackawanna & Western Railroad memorabilia was a highlight of the show.*



*Railroad police patches and badges were among the many different aspect of collecting on display at the show.*



*KL&L was once known as a "hardware only" show, but timetable and paper collectors now participate.*



*An exhibit of a variety of conductor's lanterns was one of many excellent displays at this year's convention.*



*Experts in their specialty areas of collecting exhibit at the Key Lock & Lantern Convention show on Saturday.*



# *KL&L Remembers Sam Ferrara*

As railroad historians and collectors, we understand that we are only temporary caretakers of the artifacts that we own, and will someday pass them along to someone else. Collectors of memorabilia from the Buffalo, Rochester & Pittsburgh Railway have no doubt noticed that a number of rare pieces have been on the market in recent months, along with larger quantities of more common items from that road. Those KL&L members who were fortunate enough to have known Sam Ferrara probably recognized that these BR&P artifacts were once part of the collection that he had spent a lifetime assembling.

There are some collectors who accumulate memorabilia and stash it away in a hidden hoard, while some enjoy sharing their collections and knowledge with fellow hobbyists. Sam was among those whose passion for collecting and historical research was firmly linked to assisting others and spreading his enthusiasm for the hobby to those who had an interest.

If he couldn't answer a question about the BR&P, Sam would gladly offer to find the information in his collection of company magazines. He hauled lanterns from his collection to the KL&L Convention in Albany to make them available for KL&L magazine articles, and spent many hours doing behind the scenes work to keep the organization going.

Although KL&L had been in existence since 1966, it was not an officially recognized non-profit organization until 1982, when the National Association of Railroadiana Collectors was granted a charter by New York State. Sam served as the first president of N.A.R.C., and oversaw the transition of KL&L from an informally organized group that published a magazine to a registered educational corporation.

When Dick Barrett retired as magazine editor in 1984, Sam and Joel Shaw took on the job as co-editors, doing an excellent job of filling the big shoes that were left for them, and even expanding the publication. When Joel assumed the managing editor position a few years later, Sam remained as a features editor, until the job was passed along to Gerry Geisler in 1989.

At the same time, with many of the group's new officers located in New Jersey, Key Lock & Lantern, Inc. was organized in the Garden State, assuming the publication of the magazine and the former N.A.R.C. membership rolls. Sam became a trustee of the newly formed organization, and remained active on the board until recent years. As one of the "old timers," he was always present at meetings, offering valuable advice to newer officers.

Sam was an artist by trade, and taught in the Penfield, NY School District, where he retired as chairman of the art department after almost 40 years of service. Needless to say, his artwork often featured trains, which he recreated with colored pencil on paper in exacting detail. In addition to guiding young artists in the classroom, Sam started a side venture in 1981, combining his love of trains and art.



"A Mixed Train" was the name of the business in which he partnered with Scott Hemengway, selling railroadiana, model trains, and of course railroad art. Sam could often be found at a table at train shows in western New York, always offering a selection of memorabilia that appealed to both experienced and new collectors alike. Of course, he brought the "good stuff" to KL&L conventions, with some for display and other artifacts available for those "parking lot deals."

A lifelong native of the Rochester, NY area, Sam recently moved to Massachusetts to be closer to family members. He passed away on July 31, 2024, at the age of 78, in the town of Westborough, MA. Although far from BR&P country, he could no doubt hear the whistle of the Lake Shore Limited as it passed through on the B&A, enroute to the Water Level Route and Rochester.

Sam Ferrara's work for Key Lock & Lantern played a key role in the growth of the organization, and made a lasting contribution to the field of railroad research and collecting. The artifacts that he collected have found good homes with new caretakers, but we will miss seeing Sam at the KL&L Convention each year.





A 1913 Maine Central pinecone logo sugar bowl by International Silver went to a new home for \$275.



A \$400 bid bought this Buffalo Rochester & Pittsburgh Railway Rochester pattern turkey platter with small crack.



A 14-panel color Portland & Ogdensburg Railroad timetable from 1885 sold for a \$400 high bid.



A \$2100 bid took home this Maine Central Parmalee & Bonnell lantern with green over clear barrel globe.



A Rochester & Pittsburgh Railroad key by Romer to go with the lock in a previous lot sold for a \$1300 bid.





*A pair of Kansas Pacific Railway local baggage tags by Hoole Baggage Check Company sold for \$850.*



*A \$600 bid took home this St. Louis Southwestern Railway brass heart lock with working unmarked key.*



*A \$975 bid purchased this Santa Fe builder's plate from Baldwin Locomotive Works 4-8-4 No. 3756.*



*A Union Pacific Columbine pattern demitasse set by Onondaga Pottery of Syracuse sold for \$1850.*

## KEY LOCK & LANTERN

Ads Reach Serious Collectors

Contact KL&L at [transportsim@aol.com](mailto:transportsim@aol.com)





A Lake Shore & Michigan Southern bellbottom by Adams & Westlake with blue LS&MS etched globe sold for \$160.



A Pennsylvania Railroad parlor car smoking stand with the keystone logo on the base sold for a high bid of \$375.



A high bid of \$80 sent this New York Central Lines enamel Train Auditor badge to a new collection.



A \$750 bid took home this Alco builder's plate from Delaware & Hudson Railroad RS3 No.4113.

## KEY LOCK & LANTERN

Ads Reach Serious Collectors

Contact KL&L at [transportsim@aol.com](mailto:transportsim@aol.com)





A \$140 bid purchased this Cincinnati Jackson & Mackinaw Railway local baggage tag by J.M.W. Jones Co.



A Cleveland & Pittsburgh Railroad lock by Illinois Manufacturing and unmarked key sold for a \$400 bid.



The EMD builders plate from the first Amtrak SDP40F diesel locomotive went to a new home for \$2300.



A \$500 bid purchased the passenger car name plate from the Northern Pacific slumbercoach Loch Lomond.



A bid of \$775 was needed to buy this Chicago & North Western Railroad Commuter Services bulletin board.



A collection of 25 Pullman linen tablecloths, napkins, hand towels, pillowcases and sheets sold for a \$350 bid.



# Union Pacific Big Boy Cab Rides Offered in Fundraiser Auction



Union Pacific Railroad announced today its legendary steam locomotive, Big Boy No. 4014, will make two whistle-stops in Greeley, Colorado, this summer as part of a limited summer excursion.

Big Boy will be accompanied by Union Pacific's No. 1616 Lincoln Locomotive, the railroad's newest commemorative locomotive, which honors Abraham Lincoln's role in uniting the nation through rail and laying the foundation for America's freight rail network.

As part of this year's summer excursion, the Union Pacific Railroad Museum will auction off four exclusive cab rides between Cheyenne, Wyoming, and Denver, Colorado. All proceeds will go to the museum, a nonprofit that shares American history through the lens of the railroad.

The lucky bidders will ride July 17, 2025, as part of Big Boy's preparations for Cheyenne Frontier Days. Two riders in the cab on July 17 inbound into Greeley, Colorado, and two riders in the cab July 17 inbound Denver, Colorado. The rides will be approximately two hours in duration and riders will have to be 18 years of age or older and be able to comply with all requirements in the auction listing.

Rail & Road Auctions will be conducting the online auction, with bidding closing in a live auction on June 23, 2025. Information about the auction is available, and online bidding is now open at <https://rarauctions.com>.

Although this year's excursion is limited, Big Boy will return to the rails in a big way in 2026 to celebrate America's 250th anniversary. The 2025 excursion schedule calls for the

locomotive to depart from Cheyenne, Wyoming on July 17th and depart from Greeley, Colorado on the return trip on July 19th. Twenty-five Big Boys were built during World War II, but only eight survived. No. 4014 is the only one of the eight still in operation and remains the world's largest operating steam locomotive.

To stay informed about Big Boy's schedule and future steam excursions, join the Union Pacific Steam Club at [up.com/SteamClub](http://up.com/SteamClub). A map showing No. 4014's location and route will be available during the trips on [upsteam.com](http://upsteam.com). *News & photos/ Union Pacific.*





# Union Pacific Unveils New Abraham Lincoln Commemorative Locomotive



Union Pacific Railroad recently unveiled the Abraham Lincoln commemorative locomotive No. 1616 in North Little Rock, Arkansas. Numerous dignitaries, including Arkansas Lt. Governor Leslie Rutledge, North Little Rock Mayor Terry Hartwick and Lincoln Presidential Foundation Chairman Emeritus Sergio “Satch” Pecori joined Union Pacific executives and railroaders to celebrate the pivotal role Lincoln played uniting the nation through rail and laying the foundation for America’s freight rail supply chain.

Abraham Lincoln signed the Pacific Railway Act in 1862, creating Union Pacific and unleashing a new era of economic prosperity with the construction of the transcontinental railroad network.

“Union Pacific exists because President Abraham Lincoln wasn’t afraid to ask, ‘What’s Possible?’” said Union Pacific CEO Jim Vena. “Our employees move the critical goods Americans use each day. We are proud of our heritage and look forward to sharing this special locomotive with the communities and people along the 23-states where we operate.”

Railroads are at the heart of the U.S. economy and touch nearly every industry including vehicles, chemicals, energy, agriculture, metals, minerals, forest products, consumer goods and more. Union Pacific’s more than 30,000 employees deliver essential items from lumber and drywall to build homes to corn and wheat to make bread and cereal.

No. 1616’s paint scheme has the unique colors of Lincoln’s era and serves as a nod to locomotive No. 119, one of the two locomotives present at Promontory Summit, Utah, marking the completion of the first transcontinental railroad in 1869, officially uniting the eastern and western parts of the nation. It was painted at Union Pacific’s Downing B. Jenks Locomotive Shop in North Little Rock by Union Pacific’s dedicated employees.

The Lincoln locomotive will serve as a traveling ambassador. Its first public stop will be May 10 at the Oregon Rail Heritage Center in Portland, Oregon, in celebration of National Train Day. As additional stops are finalized, details will be shared on UP.com and social media. *News & photos/ Union Pacific.*

## Railroad Museums & Historical Societies

Send in news & photos to

**KEY LOCK & LANTERN**

E-mail: [transportsim@aol.com](mailto:transportsim@aol.com)



# B&O Railroad Museum Celebrates 200th Anniversary of American Railroading with Transformation Plan Groundbreaking



The B&O Railroad Museum, the birthplace of American railroading, marked a milestone in its history on Wednesday, May 14, with a groundbreaking ceremony for its Campus Transformation Plan, in preparation for the 200th anniversary of American railroading in 2027. The Museum will restore its South Car Works building, the oldest continuously operating railroad repair facility in the country (1869-1990). The South Car Works will become the Museum's new entrance, thereby reconfiguring the Museum's campus flow to face Southwest Baltimore for the purpose of sparking community economic development. This landmark project will usher in a new era for the Museum.

The celebratory event began with a keynote address by CSX President and Chief Executive Officer, Joe Hinrichs, titled Bridging History and Progress: Economic Outlook of CSX, Baltimore, and Freight Rail. Following the keynote, an official groundbreaking ceremony took place, featuring remarks from the Capital Campaign co-chairs, Mr. Hinrichs and Benjamin H. Griswold, IV of Brown Advisory, as well as State Senator Antonio Hayes, Baltimore City Mayor Brandon Scott, and Museum Executive Director Kris Hoellen.

A choir and a brass quintet from the Baltimore School for the Arts opened the ceremony with a performance of Hail to the B&O, which was composed by Walter Goodwin to celebrate the 100th anniversary of railroading in 1927. CSX also brought its 1827 heritage locomotive to the groundbreaking ceremony. This special commemorative locomotive, numbered in recognition of the year the Baltimore & Ohio (B&O) Railroad was founded, combines colors from the modern CSX and the B&O Railroad. It carries the modern CSX logo on the front and the B&O's iconic capitol dome logo on the rear. A ceremonial shovel dig, toast, and reception followed the ceremony.

"Railroads changed the course of American history, and it all started here in Baltimore," said Joe Hinrichs, President and CEO of CSX. "Today, we're not just honoring that legacy, we're investing in what comes next. This transformation will spark curiosity, honor the rich history of the railroad, and strengthen the connection between freight rail and the communities we serve."

*Continued on Page 27*



“This is such a momentous day to see the grounds of the railroad my relatives and many others helped to charter almost 200 years ago be transformed in preparation for the next 200 years,” said Mr. Griswold. “I’m particularly excited about the transformation for Southwest Baltimore, a city I love.”

“Preparing to celebrate the 200th anniversary of American railroading and its contributions to the country while simultaneously preserving a railroading landmark, the South Car Works building, and positively contributing to our community with a \$38 million dollar investment is a trifecta of a project,” said Ms. Hoellen. “We are deeply grateful to Joe, Ben, our Board of Directors, our donors, and everyone who has and will play a role in making this campus transformation a reality.”

Key elements of the Campus Transformation Plan include restoring the South Car Works Building to become the Museum’s new entrance and several elements. An “Innovation Hall” will be dedicated to showcasing the present and future of railroading technology using interactive exhibits.

An “Amphitheater for Community Use” will re-orient the Museum campus to face Southwest Baltimore. This will include the creation of a new amphitheater and garden, known as the CSX Bicentennial Garden, providing a vibrant free community space and acting as a catalyst for the revitalization of the surrounding neighborhood.

The Museum’s nationally significant archival collection, currently housing over 30 million documents, will be relocated and placed on public view for the first time. This will create greater access for researchers to study the Museum’s invaluable historical collections and students to learn about railroading careers and history.

A “Smart Educational Classrooms” project will introduce two smart classroom spaces, to help the Museum accommodate its growing educational program. The classrooms are intentionally placed adjacent to the archives to allow students to learn how to use original source material.

The B&O Railroad Museum is grateful for the leadership support of the following for the Museum’s 200th Anniversary Campus Transformation Plan to date: CSX Foundation Inc.,



South Baltimore Gateway Partnership, The Marvin H. Weiner Foundation, Harbor Bank, Bank of America Charitable Foundation, Bunting Family Foundation, Sherman Family Foundation, France-Merrick Foundation, Posner Foundation of Pittsburgh, Truist Charitable Fund, Allegis Foundation, members of the Museum’s Board of Directors, Staff, Volunteers and Friends, and the State of Maryland and City of Baltimore.

The B&O Railroad Museum, located in Baltimore, Md., is the birthplace of American railroading. The Museum is a full affiliate of the Smithsonian Institution and a National Underground Railroad Network to Freedom Site as designated by the National Park Service. It is dedicated to the preservation and interpretation of American railroading and its impact on American society, culture, and economy. The Museum is home to the oldest, most comprehensive collection of railroad artifacts in the Western Hemisphere, including an unparalleled roster of 19th and 20th century railroad equipment, the 1851 Mt. Clare Station, the 1884 Baldwin Roundhouse, and the first mile of commercial railroad track in America. The Museum welcomes guests from all 50 states and 40 countries every year. For more information, call 410- 752-2490 or visit [www.BORail.org](http://www.BORail.org).  
*News & photos courtesy of B&O Railroad Museum*





# CLASSIFIED ADS

Classified ad listings are free for Key Lock & Lantern members. Ad size must fit in four lines, and must include a name and contact email address (the word "at" may be substituted for "@" in the email address, if desired) or website address. A maximum of two ads per person may be run at the same time. Send ads to Dave Hamilton at [transportsim@aol.com](mailto:transportsim@aol.com).

## Auctions

**Brookline Auction Gallery.** Brookline, NH. Railroadiana consignment & estate auctions. Contact sales manager Scott Czaja at [sczaja@hotmail.com](mailto:sczaja@hotmail.com) or visit [www.tagtown.net](http://www.tagtown.net).

**JM Hobby Supply & Railroad Artifacts.** Luxemburg, WI. Railroadiana consignment & estate auctions. Contact John DeBeck at [jmhobbysupplyandrrartifacts@gmail.com](mailto:jmhobbysupplyandrrartifacts@gmail.com) or visit [www.jmhobbysupply.com](http://www.jmhobbysupply.com).

**Railroad Memories.** Georgetown, CO. Online consignment & estate auctions. Contact Sue Knous at [railroadmemories@gmail.com](mailto:railroadmemories@gmail.com) or visit [www.railroadmemories.com](http://www.railroadmemories.com).

**Rail & Road Auctions.** Lafayette, IN. Online railroadiana auctions. Contact Derek Thomas at [info@RARAuctions.com](mailto:info@RARAuctions.com) or visit <https://rarauctions.com>.

## Locks & Keys

**Wanted: Switch Key** from the Baltimore Transit Company (B T Co.) Will pay a good price for a key in decent condition. Dan Allen: [NJSRR\(at\)aol.com](mailto:NJSRR(at)aol.com).

**Wanted: Locks** - fancy cast back railroad switch locks. Warren Nyerges: email [warrennyergesjr@hotmail.com](mailto:warrennyergesjr@hotmail.com) or visit [www.antiquerailroadlock.com](http://www.antiquerailroadlock.com).

## Locomotive & Rolling Stock Hardware

**Builder's Plates for Sale.** Original steam, diesel & electric builder's & number plates. Contact us for a current list of plates. Ron Muldowney: [rjmuldowney@comcast.net](mailto:rjmuldowney@comcast.net).

## Railroadiana Dealers

**Times Treasures** Railroad & Country Collectibles on Ruby Lane. All types of railroadiana, with new items added on a regular basis. <http://www.rubylane.com/shop/timestreasures>

## Timetables & Paper

**Wanted:** Interested in buying railroad paper collections, especially pre-1950 public and employee timetables, passes, name train and travel brochures and dining car menus. No collection too small or large to be of interest. Willing to travel to purchase and pick-up. 45 years in the railroadiana collecting hobby and strict confidence assured. Please contact Doug McIntyre at [dm021949@aol.com](mailto:dm021949@aol.com).

**Wanted:** Delaware & Hudson RR Employee Timetable #3 dated April 28, 1940. Also, anything related to Wayland, MA, on the Boston & Maine and Central Mass Railroad. Contact Rick Conard at [RRConard@earthlink.net](mailto:RRConard@earthlink.net)

## Trolleys & Transit

**Wanted: Photos of Syracuse, NY** trolley car #1024 & trolley cars around Syracuse University & Archbold Stadium. Dave Hamilton: [transportsim@aol.com](mailto:transportsim@aol.com).

*Want Ads Are Back!*

*Free for KL&L  
Members!*

*Read Submission  
Guidelines & Send to  
the Editor!*

The Bi-Monthly Digital  
**KEY LOCK & LANTERN NEWS**  
Sent by Email Link to 520+ Subscribers  
Visible to 200+ Daily Website Visitors  
Appears in Internet Searches  
Submit your ad to: [transportsim@aol.com](mailto:transportsim@aol.com)



- Jun 21**     **Waupaca, WI** - Annual Strawberry Fest Railroad Show & other events.  
Info: [www.wamrltd.com](http://www.wamrltd.com).
- Jun 22-27**   **Covington, KY** - American Bell Association Convention..  
Info: [www.americanbell.org](http://www.americanbell.org).
- Jun 26-29**   **Galesburg, IL** - Galesburg Railroad Days - Various events & train show.  
<http://painesvillerrailroadmuseum.org>.
- Jun 28**     **Painesville, OH** - Painesville Depot Railroad Memorabilia Show.  
<http://painesvillerrailroadmuseum.org>.
- Jul 12**     **DeLand, FL** - Florida Rail Fair. Golden Spike Enterprises  
Info: [www.gserr.com](http://www.gserr.com).
- Jul 12-17**   **Lansing, MI** - National Railway Historical Society Annual Convention.  
Info: [www.nrhs.com](http://www.nrhs.com).
- Jul 19**     **Eldersburg, MD** - Baltimore & Ohio Railroad Historical Society Mini-Convention.  
Info: [www.borhs.org](http://www.borhs.org).
- Jul 19-20**   **Ilwaco, WA** - Clamshell Railroad Days. Columbia Pacific Heritage Museum..  
<http://columbiapacificheritagemuseum.org>.
- Jul 19**     **LaCrosse, WI** - 4000 Foundation LaCrosse Rail Fair  
Info: <https://www.4000foundation.org>.
- Jun 28**     **Painesville, OH** - Painesville Depot Hobo Day Railroad Flea Market.  
<http://painesvillerrailroadmuseum.org>.
- Jul 26**     **Prescott, AZ** - Central Arizona Model Railroad Club Train Show  
Info: <https://camrrc.com/>.
- Jul 26-27**   **Luxemburg, WI** - JM Hobby Supply & Railroad Artifacts Railroadiana Auction.  
Info: <http://www.jmhobbysupply.com>.
- Jul 27**     **Middletown, NY** - O&W Historical Society Middletown Railroad Day  
Info: [www.nyow.org](http://www.nyow.org).
- Aug 9**     **Marion, OH** - Summerail Railroad Programs & Railroadiana show.  
Info: <https://www.summerail.com/>.
- Aug 9**     **Joplin, MO** - Joplin Museum Train Show. Joplin Museum Complex.  
Info: [www.tristatamodelrailroaders.com](http://www.tristatamodelrailroaders.com).
- Aug 23**     **Atlanta, GA** - Atlanta Railroad Show. Golden Spike Enterprises  
Info: [www.gserr.com](http://www.gserr.com).

## Send listings to: [transportsim@aol.com](mailto:transportsim@aol.com)

There is no charge for calendar listings. Train shows must include dealers of authentic railroad memorabilia or related material, and auctions must include at least 20 lots of railroadiana. Other events must be directly related to railroad history (special exhibitions, lecture programs, conventions, limited excursions, etc.). Regular monthly group meetings, model train meets & scheduled tourist train trips are not eligible, unless related to a special event. Events are listed space permitting, at the editor's discretion. Listings are subject to error or change. Always check show web sites before traveling.

Visit [www.klnl.org](http://www.klnl.org) for More Listings

# Key Lock & Lantern News & Information

## Key Lock & Lantern Email List

If you are not already receiving the link to this newsletter directly from KL&L, go to the "Contact KL&L" page on the Key Lock & Lantern website at [www.klnl.org](http://www.klnl.org) and sign up for our email list. You will receive links to the *KL&L News* when it is published and occasional notifications of events of interest to members. The email list is hosted by MailChimp, which makes it easy to unsubscribe at any time, and KL&L never sells or shares its email list with outside parties. Don't miss important news and announcements - sign up today!

## KL&L Facebook Page

For current news and announcements, visit the Key Lock & Lantern page on Facebook at <https://www.facebook.com/railroadiana>. Up to date information about the Key Lock & Lantern Convention, newsletter & magazine publication, and upcoming shows and auctions is posted on the page. There are also hundreds of photos of modern & historical railroad operations, railroad & transportation memorabilia, and views of recent shows and events. Be sure to "follow" the page, so that posts show up in your news feed.

## KL&L YouTube Channel

The Key Lock & Lantern YouTube channel showcases videos of modern and historical railroad operations, steam train excursions, and KL&L Convention highlights. Visit the channel at <https://www.youtube.com/user/KeyLockLantern>. Be sure to hit the subscribe button and leave comments on the videos that you enjoyed!

## Want Ads for KL&L Members

As noted in previous issues, the "Want Ad" section of the *KL&L News* is undergoing an update to remove outdated notices. If you would like to submit an ad for inclusion in future issues, contact KL&L editor Dave Hamilton at [transportsim@aol.com](mailto:transportsim@aol.com). Basic want ads are free for current Key Lock & Lantern members.

## Member Address Changes & Corrections

The *Key Lock & Lantern* magazine is sent via First Class Mail and is therefore forwarded by the U.S. Postal Service for the designated period following an address change. However, due to the frequency of publication of the magazine, the time for forwarding may expire in between issues, and your magazine may be returned to KL&L. Please make sure that Key Lock & Lantern is on your list of organizations to notify in the event of a change of address. Also, please check your mailing label when receiving your copy of the magazine, and advise KL&L if any corrections are needed. Contact Marie Brainard at [j944wb@aol.com](mailto:j944wb@aol.com) if changes are required.



For News & Information, Visit the KL&L Page on Facebook. Use the link at [www.klnl.org](http://www.klnl.org).



## KEY LOCK & LANTERN

Can Help Promote Your  
**Auction, Show or Event**

With Advertising in KL&L Publications

**2800+ Facebook Followers**

**200+ Daily Website Visits**

**520+ Newsletter Subscribers**

Contact KL&L Editor Dave Hamilton at  
[transportsim@aol.com](mailto:transportsim@aol.com)



**All submissions for the KL&L magazine,  
news items for the digital KL&L News  
& general inquiries should be sent to:**

KL&L President & Editor  
David Hamilton  
E-mail: [transportsim@aol.com](mailto:transportsim@aol.com)

**Send membership applications, dues  
payments, and address changes to:**

KL&L Chairman John Brainard &  
VP-Membership Marie Brainard  
E-mail: [j944wb@aol.com](mailto:j944wb@aol.com)

Join or Renew Your  
**KEY LOCK & LANTERN**  
Membership Online at  
[www.klnl.org](http://www.klnl.org)

### KL&L Membership Form (2025 Membership Year)

Please make check or money order payable to Key, Lock & Lantern, Inc. and forward to:  
Marie Brainard, KL&L Membership, 35 Nordhoff Place, Englewood, NJ 07631-4810

Name \_\_\_\_\_

Representing (business or museum, if applicable) \_\_\_\_\_

Address \_\_\_\_\_

City \_\_\_\_\_ State/Prov \_\_\_\_\_ Zip/Mail Code \_\_\_\_\_

Phone \_\_\_\_\_ E-mail \_\_\_\_\_

Basic membership at \$40 per year (1st Class mailing in USA) or \$60 per year (non-USA).....\$ \_\_\_\_\_

Additional Donation.....\$ \_\_\_\_\_

Enclosed is my check / money order payable to Key Lock & Lantern, Inc. for.....\$ \_\_\_\_\_

Membership in KL&L includes 4 issues of the printed magazine, special member rates for KL&L Convention registration, and access to "members only" content on the KL&L website. New members joining before September will receive all previously published magazines for the year, and will be due for renewal in the following January. New members joining in September or later will have their dues applied to the next membership period, beginning with the Jan/Feb/Mar issue, unless otherwise requested.