



KEY LOCK & LANTERN NEWS



Jan/Feb 2025

Issue No.84

The Bi-Monthly Digital Supplement to Key Lock & Lantern Magazine



**Railroad Museum &
Preservation News**

**Railrodiana
Auction Reports**

**2025 Convention
Registration Open**



KEY LOCK & LANTERN NEWS



The Bi-Monthly Digital Supplement to Key Lock & Lantern Magazine
WWW.KLNL.ORG

Jan/Feb 2025 **Issue #84**

From the President's Desk	3
Railroad Event Calendar.....	3
Brookline Railroadiana Auction.....	4
Railroad Memories Auction.....	6
JM Hobby Railroadiana Auction.....	8
Rail & Road Auction Report.....	10
2025 Key Lock & Lantern Convention.....	12
KL&L Annual Meeting.....	16
Erie Lackawanna Spring Meet.....	17
Rails Along the Mohawk Show.....	18
Katy Historical Society Convention.....	19
Classified Ads.....	22

KL&L News Editor.....David Hamilton

Send in News & Photos to: transportsim@aol.com

The Key, Lock & Lantern News is published bi-monthly as a digital supplement to the quarterly Key, Lock & Lantern magazine. Recipients may repost or forward complete and unmodified copies of this newsletter to other hobbyists and websites, but its content may not otherwise be copied or distributed without the permission of the KL&L Board of Trustees. Copyrights are held by the respective authors and photographers. Excerpts of news items may be published with the credit line "Key, Lock & Lantern News"

Annual membership dues for Key, Lock & Lantern are \$40 for residents of the USA, and \$60 for outside of the USA (by money order or electronic payment in US funds). Members receive four issues of the quarterly KL&L magazine, delivered via first class mail. Memberships for additional family members are \$5 each (only one magazine is sent per family). Applications for membership & address changes should be forwarded to the VP-Membership at the e-mail address listed at right. Online membership forms and dues payment via Paypal are available at www.klnl.org.

Contributions of articles, photos, and news may be forwarded to the editor at the e-mail address listed at right. Hard copy articles should be written on 8 1/2 x 11" paper, and typed or neatly printed. Photos should be sent with a caption card attached which includes the contributor's name, phone number, and description. Photocopies of advertising and supply catalogs are acceptable. The submission of material in digital format is preferred, with text files in DOC, TXT, or PDF format, and images in JPG, TIF, BMP or GIF format. Digital files may be sent by e-mail or on a computer CD or flash drive. Please contact the editor regarding optimum file sizes and formats.

By submitting material to Key, Lock & Lantern, the contributor grants permission for use in any edition of the KL&L magazine, digital newsletter, websites, and other publications. All material will be retained by KL&L for future use, unless the contributor specifically requests that it be returned, and includes a suitable, self-addressed, stamped envelope. Current deadlines are listed in the Key, Lock & Lantern Advertising Guide, which is available on the KL&L website at www.klnl.org, or by contacting the editor.

Key, Lock & Lantern

A non-profit membership corporation dedicated to the preservation of transportation history and railroad memorabilia

The mission of Key, Lock & Lantern is to gather and publish information on the history of the transportation industry, and to support the preservation of railroad artifacts. KL&L members have an interest in all aspects of railroad & transportation history, from research and preservation projects to the conservation and restoration of all types of historical memorabilia. Originally formed in 1966, Key, Lock & Lantern, Inc. was officially incorporated in 1988 as a non-profit, educational, membership corporation in the State of New Jersey, under the provisions of Section 501(c)(3) of the United States Internal Revenue Code. Membership is open to anyone with an interest in transportation history and in achieving the goals of the organization.

Officers & Trustees

Chairman of the Board

John Brainard
j944wb@aol.com

President & Editor

David Hamilton
transportsim@aol.com

VP- Membership / Treasurer

Marie Brainard
j944wb@aol.com

Secretary

Jeremy Tuke

Chaplain / Sgt at Arms

Chip Greiner

Historian

Peter Gores

Trustees at Large

Lyman Gray, Sam Lombardi, Joel Shaw, Sam Ferrara, Leonard Gordy, Bob Lipman, Randy Bushart, William Sternitzke, Bill Roberts, Bob Myers, Joey Senese, Matthew Bushart, Michael Decker

www.klnl.org



For Current News
"Like" KL&L on

facebook

From the President's Desk.....

There are a few final details for the committee to work out, but online registration for the 2025 Key Lock & Lantern Convention will open at 10am on Monday, March 10th. Paper forms were mailed out on Friday, March 7th, so those should also be in most members' hands by Monday. When you receive your form, take a look at the mailing label. If it shows "182" on your label, you are overdue to renew your membership, and must send in your dues to register for the convention (and to keep receiving mailings from KL&L). If your label has a "186" or higher, you are up to date. It is important to verify your status, as the next magazine will be mailed immediately following the convention, and you won't want to miss it!

This year's convention is shaping up to be even bigger and better than last year (which had record high participation and attendance). It is always the goal of the convention committee to maintain the unique atmosphere of the event, where you can comfortably exhibit rare memorabilia, wander around and visit with friends, and still make a deal on something that you want to buy or sell. The tricky part is to encourage more collectors and historians to attend, while not turning it into a public train show. So far, we have done a pretty good job of doing that, and despite its much larger scale, it still feels like the old days in Albany.

This year, our train ride will be returning to the Lackawanna Railroad mainline, with a trip from Scranton to the Mount Pocono area (the exact itinerary is one of the things that we are still working on). Apart from a short trip up to the Nay Aug Tunnel in 2023, we haven't run over on this route for several years, so it is exciting to get back out on the high iron again. Thanks to the generous support of Genesee Valley Transportation, and its president David MonteVerde, we will once again have the railroad's executive inspection train for our trip. So make plans to arrive on Thursday night for early trading and come for the ride on Friday morning!

I'm sure that most exhibitors at the Saturday show will have some new material to sell or trade, with all of the collections that have been up for auction in recent months. Whether it is extra memorabilia from large auction lots, or thinning out a collection to make room for new acquisitions, there will no doubt be some good stuff at the show this year. Even if you aren't getting a table, throw a few things in a box and bring them to the lounge on Friday night - there is always plenty of "horse trading" going on.

Of course, my favorite part of the convention is still just hanging out in the bar and listening to railroad stories. There are many current and retired railroaders in our membership, and they bring history to life, along with attaching a human element to the artifacts that we collect. It is just an enjoyable event from start to finish.

I hope to see many of our members at the convention, and if you can't attend, send some photos of your collection and we'll share them in the newsletter. And as always, thanks for everyone's ongoing support of KL&L!

Dave Hamilton

KL&L President & Editor

Railroad Event Calendar



Upcoming historical society conventions, special events, railroadiana shows & auctions. Listings subject to change. Check show web sites before traveling and visit www.klnl.org for updates. See submission guidelines at the end of the calendar.

Look for Advertisements in this Issue & on the Key Lock & Lantern Website for [Events Shown in Blue](http://www.klnl.org)

- Mar 2** **Clark, NJ** - Jersey Central NRHS Train Show. Mother Seton High School.
Info: www.jcrhs.org.
- Mar 6** **Lafayette, IN** - Railroad Book Auction. Rail & Road Auctions.
Info: <https://rarauctions.com>
- Mar 8** **Harrisburg, PA** - Harrisburg NRHS Railroad Show & Collectors Market.
Info: <https://www.harrisburgnrhs.org/>
- Mar 8-9** **Luxemburg, WI** - Railroadiana Auction. JM Hobby Supply & Railroadiana.
Info: www.jmhobbysupply.com
- Mar 8** **Perris, CA** - Southern California Railway Museum Swap Meet.
Info: www.socalrailway.org.
- Mar 8** **St. Cloud, MN** - Granite City Railroad Show St. Cloud, MN.
Info: www.granitecitytrainshow.com.
- Mar 9** **Spokane, WA** - Spokane Train Show - River City Modelers.
Info: www.rivercitymodelers.org.
- Mar 15** **Corvallis, OR** - Winterail Photo Expo & Railroad Collectibles Sale.
Info: www.winterail.com.

Continued on Page 25

Front Cover: The 2023 KL&L excursion train rolls through the Nay Aug Tunnel near Scranton, PA. Dave Hamilton photo.

Several Collections & Consignments Come Through Brookline Auction Gallery

A variety of rare and unusual railroadiana continues to flow through the Brookline Auction Gallery, with several large collections being sold. While many auctions have shifted to an online-only format, Brookline continues to hold onsite sales, with online bidding also offered. *Photos and prices realized courtesy of Brookline Auction Gallery and do not include buyers premiums and shipping.*



A Delaware Lackawanna & Western Steam Gauge brass top with a 6" DL&W clear cast globe sold for \$275.



A bid of \$725 bought this Adams & Westlake lantern from the Northern Central with clear cast NCR globe.



A \$350 bid took home this Pennsylvania RR & East Broad Top Railroad Mount Union baggage tag.

Continued on Page 20

KEY LOCK & LANTERN
Can Help Promote Your
Auction, Show or Event
Contact KL&L at transportsim@aol.com

Railroadiana Auctions - Spring & Fall - Brookline, NH

Railroadiana Consignment Auctions Held Each Spring & Fall
Brookline Auction Gallery LLC - 32 Proctor Hill Rd, Brookline, NH 03033

www.brooklineauctiongallery.com

Scott Czaja - Sales Manager

Next Sale: April 25 & 26, 2025

Featuring Consignments & Several Prominent Collections



Now on LiveAuctioneers.com - We also accept absentee bids via: e-mail & mail
Quality consignments are welcome for future sales - email Scott: sczaja@hotmail.com

Railroad Memories Offers Rare Memorabilia from Both East & West Coast Railroads

Railroad Memories continues to offer high end railroadiana in its catalog and online auctions, with several well known collections gradually being dispersed to new owners. There is much more to come in upcoming sales, with the usual selection of western material and some from the east coast. *Photos and prices realized courtesy of Railroad Memories Auctions and do not include buyers premiums and shipping.*



A Union Pacific egg cup, stamped "Columbine the State Flower of Colorado" went to a new home for a \$6500 bid.



A nickel plated No. 39 with green over clear Cincinnati Indianapolis St. Louis & Chicago globe sold for \$1150.



A \$725 bid purchased this Denver & Rio Grande Western step box with embossed and stenciled logo markings.



A \$700 bid took home this Union Pacific Railroad Station Baggage hat badge with no maker's hallmark.

Continued on Page 21



RAILROAD MEMORIES RAILROADIANA AUCTIONS

Recent Auction Highlights



Southern Pacific Adams & Westlake with
Amber Cast SPRR Globe: \$14,250



Union Pacific Denver & Gulf
Railway by Union Lock &
Hardware: \$11,750



Northern Pacific by SG&L with Green
Cast NPRRGlobe: \$5,000



Union Pacific Denver & Gulf
Railway Switch Key: \$8,750



Great Northern Railway Porcelain
24" Logo Sign: \$1,350



SP&S / OERY / GNPY Dater Die from
Portland, Oregon: \$1,000



AT&SF & Colorado Midland 1894
Joint Annual Pass: \$1,900



CM&STP RY Cooke Works
Builders Plate: \$2,300



Chicago & Northwestern "Lunch Room"
Bowl by Shenango: \$975

www.railroadmemories.com

Information about consigning: 303-569-5189 or railroadmemories@gmail.com

JM Hobby Continues with Sale of Several Large Railroad Memorabilia Collections

The fall auction by JM Hobby Supply & Railroad Artifacts had something for every collector, from top shelf memorabilia to reasonably priced lots. A large collection of model trains rounded out the two day sale. There are more collections on deck for the spring auction, and consignments are still being accepted for upcoming sales. *Photos and prices realized courtesy of JM Hobby Supply & Railroad Artifacts and do not include buyers premiums and shipping.*



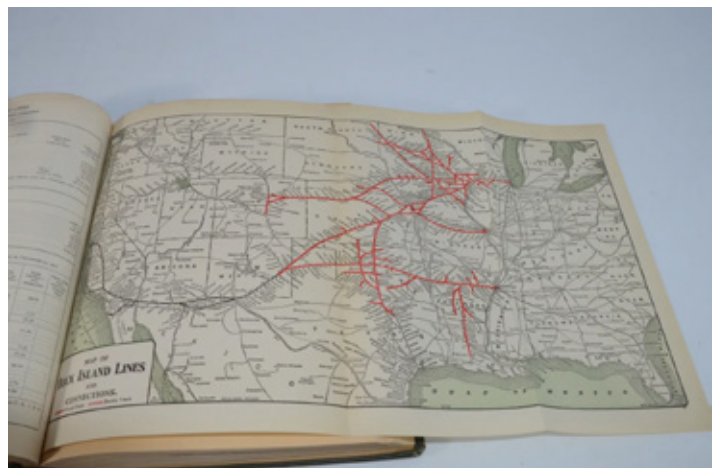
A piece of copper ore salvaged from the wreck of the Great Lakes ship Pewabic went to a new collection for \$450.



A U.S. Express Company Dietz bellbottom lantern with a cracked etched globe sold for a \$300 high bid.



A \$200 bid took home this album of photographs taken by well-known photographer Harold Vollrath.



A \$120 bid was needed to purchase this bound set of Chicago Rock Island & Pacific 1922-1930 reports.

Continued on Page 22

JM HOBBY SUPPLY & RAILROAD ARTIFACTS

Railroad Artifact Auction

In Conjunction with Ihander Auctioneering

Saturday & Sunday, March 8-9, 2025 - 9AM CST

Over 1,100 Lots to be Sold from Several Large Estates

Hundreds of rare railroad switchman, marker, class, and switch lamps/lanterns, including fine examples from the ERIE, MT, CC&CS, LS&MS, CNS&M, CN, C&S, D&RGW, FITCHBURG, and many more! Two big estates of railroad China and Silver! Employee & public timetables, rare books, 2 railroad photo collections, RR maps, and RR paper! Lot of brass keys, brass steam loco bell, step boxes, and smoking stands! Many cast iron and metal signs, plus RR lantern parts!



WE OFFER THE LOWEST SELLERS COMMISSIONS AND BUYERS FEES IN THE U.S.A!

SHIPPING IS AT ACTUAL COST....NOT INFLATED!

Call us today to discuss selling your collection at 920-857-9670!

PO Box 25, Luxemburg, WI 54217

Online catalog & bidding is available at <https://jmhobbysupply.hibid.com/>

Email us at jmhobbysupplyandrrartifacts@gmail.com

Or visit our website at www.jmhobbysupply.com

Rail & Road Auctions Continues Schedule of Two-Day Railroad Memorabilia Auctions

Rail & Road Auctions is not slowing down, with live online auctions held monthly, featuring memorabilia of every sort from all over the country. From higher end artifacts to bargain lots for newer collectors, there has been something for everyone in recent auctions, with plenty to come in upcoming sales. *Photos and prices realized courtesy of Rail & Road Auctions and do not include buyers premiums and shipping.*



A Central Railroad of New Jersey brass heart lock with working Fraim CRR of NJ key sold for a \$725 bid.



A \$250 bid purchased this Long Island Railroad Armspear lantern with insulated bail and red cast LIRR globe.



A \$275 bid took home this set of four Delaware Lackawanna & Western Railroad playing cards.



A Union Pacific Railroad Columbine pattern 7 3/8" oval celery tray stamped Old Ivory Syracuse sold for \$725.

KEY LOCK & LANTERN

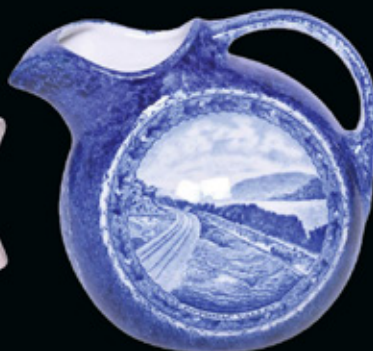
Can Help Promote Your
Auction, Show or Event

Contact KL&L at transportsim@aol.com

Continued on Page 23

RAIL & ROAD AUCTIONS

Now Accepting Consignments for
2025 Railroad & Transportation Auctions



View the catalogs on our website & register to bid.
Rail & Road offers online, absentee, and telephone bidding.



RAIL & ROAD AUCTIONS

WWW.BIDRAR.COM

765-412-7926



Registration Opens for the 2025 Key Lock & Lantern Convention



Registration for the 2025 Key Lock & Lantern Convention will open at 10am on Monday, March, 10th on the Key Lock & Lantern website at www.klnl.org. The event will once again be held at the Hotel Anthracite in Carbondale, PA over the weekend of May 8th through 11th. All transportation history buffs and collectors are invited to attend the many events that are scheduled for the weekend.

Informal activities begin on Thursday evening, May 8th, when most attendees begin to arrive. Pre-show railroading trading will take place in the hotel's Canary Lounge, and many KL&L members gather in the adjoining bar to catch up with old friends and make new ones. The convention

schedule offers plenty of opportunities such as this to relax and discuss transportation and industrial history and current preservation efforts. While it is not the biggest event for railroad historians, it is certainly one of the best for making contacts with fellow collectors, railroad preservationists, and other organizations.



On Friday, May 9th, a special Key Lock & Lantern chartered excursion train will depart from adjacent to the Lackawanna Transit Center in Scranton, PA, for a trip over the former Delaware, Lackawanna & Western Railroad mainline. The train schedule is still being finalized, but it is expected that the train will depart at 10am for Mount Pocono and arrive back around 4pm. The special train will be provided by our long-time supporters at Genesee Valley Transportation, and will consist of a former EL Comet coach, the EL business car No.2, and an original DL&W caboose.

Continued on Page 13



2025 KL&L Convention

Continued from Page 12

Dinner on Friday evening is on your own, and the KL&L board will hold its annual meeting. If there is any business that members wish to have considered by the board, please forward it to KL&L president Dave Hamilton prior to May 1st. After dinner, more pre-show trading will take place in the Canary Lounge (or in the hotel courtyard, weather permitting).



1850-1890 period, railroad uniform badges, and an original CTC machine panel from the New York Central Railroad. The Erie Railroad, the Northern Central Railroad, the Delaware & Hudson Canal Company, the Chicago & Alton Railroad, Taylor Manufacturing Company, street & post lamps, railroad police badges, and lantern patent models have been featured in recent years.

On Saturday, May 10th, the Gravity Hall banquet room at Carbondale's Hotel Anthracite will once again be filled with transportation history exhibits and tables of authentic railroad memorabilia for sale or trade. The Transportation History Exposition is the "main event" of the Key Lock & Lantern Convention, providing members with a venue to showcase interesting artifacts from their collections and the results of their research. Over sixty tables are available in the 6000 square foot facility, and this year's event promises to be another exciting one.



In addition to the displays, most exhibitors also offer authentic memorabilia for sale or trade. A collector will find every type of railroadiana at the show, from hardware to paper and everything in between. A nice selection of lanterns (including non-railroad models) is usually offered by several collectors, along with globes, fountains, and other parts. Several exhibitors are experts at lantern restoration, and are always happy to give advice, or to offer their repair services. Lock and key collectors will find plenty of scarce examples for their collections, and can exchange "want lists" with others who are looking for similar artifacts.



KL&L members competing for the "Best in Show" award have presented a variety of exhibits in recent years, with topics ranging from lantern manufacturers to local railroad history. Some of the displays at recent shows included: the Nail City Lantern Company, Delaware Lackawanna & Western Railroad memorabilia, early Amtrak timetables, passes from New York & Pennsylvania railroads of the

Continued on Page 14

2025 KL&L Convention

Continued from Page 13

A growing number of timetable and paper collectors have been participating in the show in recent years, with several members of the National Association of Timetable Collectors scheduled to exhibit this year. From rare 19th century employee timetables to modern public timetables in the “dollar bin,” there is something available to fit every ephemera collector’s budget. A variety of used books on transportation and industrial history subjects are also usually offered for sale by various exhibitors.



Several historical societies are also expected to have tables at the show, offering books and memorabilia for sale, and providing information about their group’s activities. The KL&L Convention is an excellent event for networking with fellow historians, and members of these groups are looking forward to meeting collectors with similar interests.



Box lunches will once again be available to exhibitors and attendees for a very reasonable price of \$12. Lunches include a choice of sandwich (chicken salad, turkey, ham, or roast beef), chips, dessert, and bottled water. Box lunches must be ordered in advance, and the hotel restaurant will not be open for lunch. For those attendees who would like to take a break for lunch, there are several restaurants and fast food establishments within walking distance of the hotel.



The KL&L fundraiser sale will take place in the afternoon, with several tables of donated memorabilia to be sold to the highest bidder. All proceeds from this event are used to keep registration fees at a reasonable level, with the convention operating on a break-even basis every year as a result. There is always some interesting (and sometimes scarce) memorabilia to buy, and it is a great opportunity to pass along something that is no longer needed in a collection, while supporting a good cause.



The annual membership meeting of Key Lock & Lantern will be held at 2:00pm on Saturday afternoon, in the exhibit hall. The “Best in Show” award will also be presented to the member whose display receives the most votes from show attendees.

Setup for the Transportation History Exposition begins at 7:30am, with doors to the Gravity Hall opening at 9:00am. The convention registration fee of \$5 entitles members to admission to all events during the day. For those who do not have exhibit tables, but would like to enter the hall during setup, and early admission pass is available for \$20. For those only planning on attending the show, registration will be available at the door for \$10 per person.

Continued on Page 15

2025 KL&L Convention

Continued from Page 14

At 5:00pm on Saturday evening, a buffet dinner will be held in the Hotel Anthracite Gravity Hall. Dinner is only \$29 per person, and must be reserved in advance. Following dinner, railroad history programs will be presented (a complete schedule will be announced in the next issue of the *KL&L News*). Convention registrants who do not attend the banquet are welcome to return at 6:30pm for the programs.



The schedule for Sunday has once again been left open for those who wish to explore the many local historic sites and museums on their own, or head home for Mother's Day. It is anticipated that Steamtown will have their short trips with the steam locomotive in operation by that weekend, and the Electric City Trolley Museum will be offering rides. There should be some freight train action on nearby lines for the train chasers, as well.



Online registration for the convention is available on the KL&L website at www.klnl.org, beginning on Monday, March 10th. Reservations for the Hotel Anthracite at the special KL&L rate of \$109 per night plus tax should be made by calling the hotel directly at 570-536-6020. Be sure to register early, as hotel rooms and table space are limited. This year's convention is shaping up to be another great event, so get onboard today!



Annual Key Lock & Lantern Membership Meeting to be Held on May 10, 2025



The annual membership meeting of Key Lock & Lantern will be held on Saturday, May 10, 2025, at 2:00pm, at the Hotel Anthracite, 25 S. Main Street, Carbondale, PA. The annual meeting of the KL&L Board of Trustees will be held at the same location on Friday, May 9, 2025.

A summary of the reports of the officers of the organization will be presented by the president at the meeting. If any member in good standing wishes to inspect the detailed financial reports and meeting minutes, they will be available for review at the meeting upon request.

If any member has new business that they would like to have addressed at the general membership meeting or the Board of Trustees meeting, please forward it to KL&L president David Hamilton prior to May 1, 2025. Contact information for KL&L officers and trustees may be found in the latest issue of the *Key Lock & Lantern* magazine, in this newsletter, and at www.klnl.org.

Calling All Members: Help Spread the Word!

When we discover a rare lantern at a country auction in the middle of nowhere, we are generally happy when no other collectors show up. On the other hand, events such as the KL&L Convention are a success when more people attend. And, the cost of publishing the KL&L magazine is lower on a per-issue basis when the press run is larger. In short, the more members we have, the better the organization will be!

The internet and social media have allowed KL&L to reach many historians and collectors that would have likely never heard of the organization in the past. There are many people out there who would probably enjoy being members of Key Lock & Lantern, if they knew about everything that we have to offer.

Our current members are the key to successfully promoting KL&L, whether it is through social media or in-person events such as train shows and related historical society events. The easiest thing that our members can do to help grow KL&L is to spread the word through social media.

Following the Key Lock & Lantern Facebook page helps boost its visibility to other users. When KL&L makes a post about the convention, the publication of a newsletter, or just some photos, sharing them with relevant Facebook groups (after checking that they haven't already been posted) helps increase traffic to the KL&L page. When traffic goes up, the KL&L postings are more likely to appear in news feeds.

The same goes for the KL&L YouTube Channel. Videos are more visible when there are more subscribers to the channel, and individual videos are more likely to be seen when they have more "likes" and comments. The more exposure that KL&L gets, the more potential members learn about it.



For those members who aren't ready to take the plunge into the world of social media or YouTube accounts, then good old-fashioned networking at train shows and events is a great way to get the word out. Having a few convention flyers to hand out to prospective attendees is always good (there are two at the end of this newsletter), and will also increase the traffic to the KL&L website.

Let's get the word out about KL&L, and help make the organization bigger and better! You may hope to still be the only railroadiana collector who shows up at an estate sale, but when it comes to shows and meetings, we love a crowd!

Erie Lackawanna Historical Society to Hold Annual Spring Meet in Parsippany

The Erie Lackawanna Railroad Historical Society will hold its annual Eastern District Spring Meeting on Sunday, April 27, 2025, at the Holiday Inn in Parsippany, NJ. The hotel is located on US Route 46, and is convenient to Interstates 80 and 287.

Doors open at 9:30am, with programs starting at 10:00am, and a lunch break (on your own) from 12:30pm to 2:00pm. There will be coffee and danish served in the morning, which is included in the registration fee of \$45 per person.

Presentations that are currently scheduled include, the New York Division by Jim Mardiguan, Movies & Orange County images by Erik Pioselli, EL in the early 70's by Howard Kent, Jr., EL Potpourri by Sam Calciotti, and EL MU trains by Ray Wetzel. Vendor tables are available at \$25 each.

Walk-in registrants are welcome, but advance registration is recommended. For more information, and to register for the event online, visit the Erie Lackawanna Railroad Historical Society website at www.erielackhs.org. *All photos from the KL&L Archives.*



KEY LOCK & LANTERN

Can Help Promote Your

Auction, Show or Event

Contact KL&L at transportsim@aol.com

Alco Historical & Technical Society to Hold Rails Along the Mohawk Train Show

The 11th annual “Rails Along the Mohawk” train show will be held on April 6, 2025, from 10:00am to 3:00pm, at the Riverfront Center in Amsterdam, NY. This event is a major fundraiser for the Alco Historical & Technical Society, a non-profit organization dedicated to preserving the history of this famous locomotive manufacturer.

The mission of the society includes gathering oral histories from former Alco employees, acquiring artifacts from the company, and educating the public about its history. The current home of the group’s exhibits is the Walter Elwood Museum in Amsterdam, and it works with other organizations to further the preservation of Alco locomotives and memorabilia.

The train show features models, displays by other railroad historical societies, and sellers of railroadiana. Several KL&L members are regular exhibitors at the show. The Riverfront Center is located adjacent to the former New York Central mainline, offering the opportunity for watching the parade of CSX and Amtrak trains after visiting the show.

For more information, visit the Alco Historical & Technical Society website at <https://ahts.org>.



Katy Railroad Historical Society Annual Convention Heads to Fort Worth

The Katy Railroad Historical Society will hold its annual convention from April 24th through 27th, in the railroad center of Fort Worth, Texas. Convention headquarters will be at the Home2 Suite / Tru by Hilton in Euless, TX. The mission of the society is to collect and publish information about the Missouri-Kansas-Texas Railroad, and bring those who have an interest in the line together. Each year, the members of the organization gather for a variety of activities related to the history of the Katy.



Museum of the American Railroad Photo

Other trips include a ride on the Trinity Railway Express train to Dallas Union Station, and a motor coach trip to Frisco, Texas for a visit to the Museum of the American Railroad. A Texas-style BBQ will take place on Saturday night, with an open schedule on Sunday to allow for local railfanning.

For more information about the convention and the Katy Railroad Historical Society in general, visit their website at <https://katyrailroad.org>.



Katy Railroad Historical Society Photo

Convention activities will include presentations about the Katy's Central Texas District, the history of the M-K-T in the Fort Worth area, and modeling the Katy. There will be displays of models and memorabilia, and dealer tables. In addition to the programs, there will be a trip to Grapevine, Texas to visit the restored SP/MKT/T&P interlocking tower, and a ride on the Fort Worth TexRail system to the former passenger station downtown.



Trinity Metro Photo



Katy Railroad Historical Society Photo



A Concord & Montreal brass top by Steam Gauge with a blue cast C&MRR globe sold for a \$4600 bid.



A \$2800 bid was needed to buy this Connecticut River Railroad clear cast fixed globe lantern.



A \$775 bid took home this Dietz Vesta crossing lantern with a clear cast Philadelphia & Reading RR globe.



A brass baggage tag from a Baltimore & Ohio Railroad special from Ellis Island by American Railway Supply.



A Denver & Rio Grande Railway six lever car lock by Miller went of a new collection for a high bid of \$2050.



A 23" aluminum Santa Fe Kachina plaque from a 1953 Budd coach sold for a high bid of \$1250



A \$500 bid purchased this New York Ontario & Western Railway Local baggage tag hallmarked Hoole Mfg. Co.



A \$270 bid purchased this 3" Santa Fe nickel Indian Head and cross logo badge, possibly from a band hat.



An album full of over 40 Great Northern advertising blotters went to a new collector for a high bid of \$400.

KEY LOCK & LANTERN

Can Help Promote Your Auction, Show or Event

Contact KL&L at transportsim@aol.com



A pair of Milwaukee Road electrified Adlake cannonball class lamps sold for a high bid of \$1600.



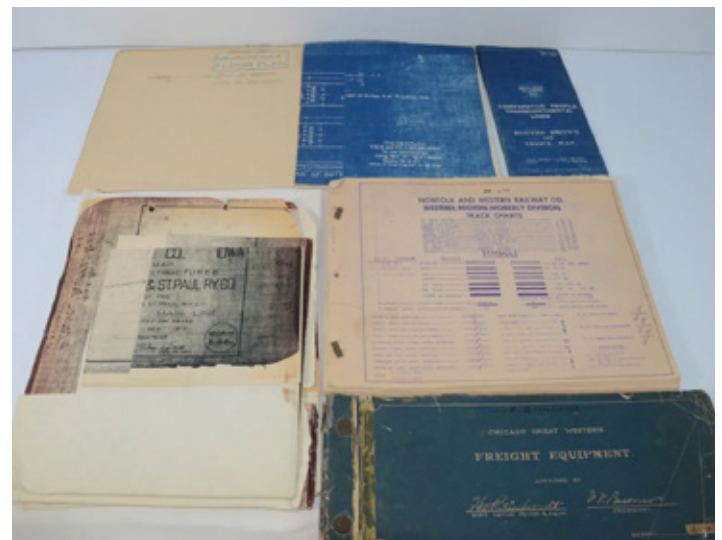
A \$150 bid took home this nicely restored complete Nickel Plate Road switch lamp by Handlan.



An \$80 bid sent this lot of 22 Union Pacific Railroad magazines from 1923 to 1933 to a new collection.



A lot of timetables & paper from the Chicago North Shore & Milwaukee and Chicago Aurora & Elgin sold for \$70.



A lot of Chicago Great Western, Milwaukee Road, Wabash, and Colorado & Southern blueprints sold for \$400.



A modern era Safetran Systems mechanical crossing bell went to a new collection for a high bid of \$325.



A \$500 bid purchased this Pullman Porter cap with nickel badge, gold cord, and matching buttons on the side.



A \$1750 bid was needed to buy this Rogers Locomotive Works builders plate from Illinois Central 4-4-2 #1024.



A Pullman uniform jacket and vest by Browning & King with a Pullman coat hanger went to a new home for \$700.



A \$375 bid took home this collection of nine Nashville Chattanooga & St. Louis Railroad public timetables.



Under that paint is a Virginian Fairbanks Morse diesel builders plate that sold for a high bid of \$525.

KEY LOCK & LANTERN

Ads Reach Serious Collectors

Contact KL&L at transportsim@aol.com

CLASSIFIED ADS

Classified ad listings are free for Key Lock & Lantern members. Ad size must fit in four lines, and must include a name and contact email address (the word "at" may be substituted for "@" in the email address, if desired) or website address. A maximum of two ads per person may be run at the same time. Send ads to Dave Hamilton at transportsim@aol.com.

Auctions

Brookline Auction Gallery. Brookline, NH. Railroadiana consignment & estate auctions. Contact sales manager Scott Czaja at sczaja@hotmail.com or visit www.tagtown.net.

JM Hobby Supply & Railroad Artifacts. Luxemburg, WI. Railroadiana consignment & estate auctions. Contact John DeBeck at jmhobbysupplyandrrartifacts@gmail.com or visit www.jmhobbysupply.com.

Railroad Memories. Georgetown, CO. Online consignment & estate auctions. Contact Sue Knous at railroadmemories@gmail.com or visit www.railroadmemories.com.

Rail & Road Auctions. Lafayette, IN. Online railroadiana auctions. Contact Derek Thomas at info@RARauctions.com or visit <https://rarauctions.com>.

Locks & Keys

Wanted: Switch Key from the Baltimore Transit Company (B T Co.) Will pay a good price for a key in decent condition. Dan Allen: [NJSRR\(at\)aol.com](mailto:NJSRR(at)aol.com).

Wanted: Locks - fancy cast back railroad switch locks. Warren Nyerges: email warrennyergesjr@hotmail.com or visit www.antiquerailroadlock.com.

Locomotive & Rolling Stock Hardware

Builder's Plates for Sale. Original steam, diesel & electric builder's & number plates. Contact us for a current list of plates. Ron Muldowney: rjmuldowney@comcast.net.

Railroadiana Dealers

Times Treasures Railroad & Country Collectibles on Ruby Lane. All types of railroadiana, with new items added on a regular basis. <http://www.rubylane.com/shop/timestreasures>

Timetables & Paper

Wanted: Interested in buying railroad paper collections, especially pre-1950 public and employee timetables, passes, name train and travel brochures and dining car menus. No collection too small or large to be of interest. Willing to travel to purchase and pick-up. 45 years in the railroadiana collecting hobby and strict confidence assured. Please contact Doug McIntyre at dm021949@aol.com.

Wanted: Delaware & Hudson RR Employee Timetable #3 dated April 28, 1940. Also, anything related to Wayland, MA, on the Boston & Maine and Central Mass Railroad. Contact Rick Conard at RRConard@earthlink.net

Trolleys & Transit

Wanted: Photos of Syracuse, NY trolley car #1024 & trolley cars around Syracuse University & Archbold Stadium. Dave Hamilton: transportsim@aol.com.

Want Ads Are Back!

*Free for KL&L
Members!*

*Read Submission
Guidelines & Send to
the Editor!*

The Bi-Monthly Digital

KEY LOCK & LANTERN NEWS

Sent by Email Link to 520+ Subscribers

Visible to 200+ Daily Website Visitors

Appears in Internet Searches

Submit your ad to: transportsim@aol.com

- Mar 15-16** Painesville, OH - Painesville Railroad Museum Rail Fest.
Info: www.painesvillerrailroadmuseum.org.
- Mar 23** Kingston, NY - Railroad Hobby Show. Murphy Midtown Center.
Info: www.kingstontrainshow.com.
- Mar 30** Monaca, PA - Beaver County Model RR & Historical Society Train Show
Info: www.bcmrr.railfan.net.
- Apr 5-6** Calgary, AB - Calgary Super Train Railroad Show.
Info: www.supertrain.ca.
- Apr 5** DeLand, FL - Florida Rail Fair. Golden Spike Enterprises
Info: www.gserr.com.
- Apr 5-6** Denver, CO - Rocky Mountain Train Show. Train Collectors Association.
Info: <http://rockymountaintrainshow.com>
- Apr 6** Amsterdam, NY - Rails Along the Mohawk Train Show
Info: www.ahts.org.
- Apr 13** Griffith, IN - Blackhawk NRHS Swap Meet.
Info: <https://www.blackhawkrailwayhistoricalsociety.org>.
- Apr 24-27** Fort Worth, TX - Katy Railroad Historical Society Convention.
Info: www.katyrailroad.org.
- Apr 25-26** Brookline, NH - Railroadiana Consignment Auction. Brookline Auction Gallery.
Info: www.tagtown.net.
- Apr 26** Boonsboro, MD - Hagerstown Railroad Museum Train Show.
Info: www.antietamstation.com.
- Apr 26** Columbus, OH - Buckeye Railroadiana Show by Golden Spike Enterprises.
Info: www.gserr.com.
- Apr 27** Parsippany, NJ - Erie Lackawanna Railroad Historical Society Spring Meet.
Info: www.erielackhs.org.
- May 3** Ocean View, DE - Delaware Seaside Railroad Club Train Show.
www.delawareseasiderailroadclub.com.
- May 8-11** Carbondale, PA - Key, Lock & Lantern Annual Convention.
Info: www.klnl.org.
- May 10** Painesville, OH - Painesville Railroad Museum Model Train Day Show.
Info: www.painesvillerrailroadmuseum.org.

Send listings to: transportsim@aol.com

There is no charge for calendar listings. Train shows must include dealers of authentic railroad memorabilia or related material, and auctions must include at least 20 lots of railroadiana. Other events must be directly related to railroad history (special exhibitions, lecture programs, conventions, limited excursions, etc.). Regular monthly group meetings, model train meets & scheduled tourist train trips are not eligible, unless related to a special event. Events are listed space permitting, at the editor's discretion. Listings are subject to error or change. Always check show web sites before traveling.

Visit www.klnl.org for More Listings

Key Lock & Lantern News & Information

Key Lock & Lantern Email List

If you are not already receiving the link to this newsletter directly from KL&L, go to the "Contact KL&L" page on the Key Lock & Lantern website at www.klnl.org and sign up for our email list. You will receive links to the *KL&L News* when it is published and occasional notifications of events of interest to members. The email list is hosted by MailChimp, which makes it easy to unsubscribe at any time, and KL&L never sells or shares its email list with outside parties. Don't miss important news and announcements - sign up today!

KL&L Facebook Page

For current news and announcements, visit the Key Lock & Lantern page on Facebook at <https://www.facebook.com/railroadiana>. Up to date information about the Key Lock & Lantern Convention, newsletter & magazine publication, and upcoming shows and auctions is posted on the page. There are also hundreds of photos of modern & historical railroad operations, railroad & transportation memorabilia, and views of recent shows and events. Be sure to "follow" the page, so that posts show up in your news feed.

KL&L YouTube Channel

The Key Lock & Lantern YouTube channel showcases videos of modern and historical railroad operations, steam train excursions, and KL&L Convention highlights. Visit the channel at <https://www.youtube.com/user/KeyLockLantern>. Be sure to hit the subscribe button and leave comments on the videos that you enjoyed!

Want Ads for KL&L Members

As noted in previous issues, the "Want Ad" section of the *KL&L News* is undergoing an update to remove outdated notices. If you would like to submit an ad for inclusion in future issues, contact KL&L editor Dave Hamilton at transportsim@aol.com. Basic want ads are free for current Key Lock & Lantern members.

Member Address Changes & Corrections

The *Key Lock & Lantern* magazine is sent via First Class Mail and is therefore forwarded by the U.S. Postal Service for the designated period following an address change. However, due to the frequency of publication of the magazine, the time for forwarding may expire in between issues, and your magazine may be returned to KL&L. Please make sure that Key Lock & Lantern is on your list of organizations to notify in the event of a change of address. Also, please check your mailing label when receiving your copy of the magazine, and advise KL&L if any corrections are needed. Contact Marie Brainard at j944wb@aol.com if changes are required.



For News & Information, Visit the KL&L Page on Facebook. Use the link at www.klnl.org.

KEY LOCK & LANTERN

Can Help Promote Your
Auction, Show or Event

With Advertising in KL&L Publications

2800+ Facebook Followers

200+ Daily Website Visits

520+ Newsletter Subscribers

Contact KL&L Editor Dave Hamilton at
transportsim@aol.com



**All submissions for the KL&L magazine,
news items for the digital KL&L News
& general inquiries should be sent to:**

KL&L President & Editor
David Hamilton
E-mail: transportsim@aol.com

**Send membership applications, dues
payments, and address changes to:**

KL&L Chairman John Brainard &
VP-Membership Marie Brainard
E-mail: j944wb@aol.com

Join or Renew Your
KEY LOCK & LANTERN
Membership Online at
www.klnl.org

KL&L Membership Form (2025 Membership Year)

Please make check or money order payable to Key, Lock & Lantern, Inc. and forward to:
Marie Brainard, KL&L Membership, 35 Nordhoff Place, Englewood, NJ 07631-4810

Name _____

Representing (business or museum, if applicable) _____

Address _____

City _____ State/Prov _____ Zip/Mail Code _____

Phone _____ E-mail _____

Basic membership at \$40 per year (1st Class mailing in USA) or \$60 per year (non-USA).....\$ _____

Additional Donation.....\$ _____

Enclosed is my check / money order payable to Key Lock & Lantern, Inc. for.....\$ _____

Membership in KL&L includes 4 issues of the printed magazine, special member rates for KL&L Convention registration, and access to "members only" content on the KL&L website. New members joining before September will receive all previously published magazines for the year, and will be due for renewal in the following January. New members joining in September or later will have their dues applied to the next membership period, beginning with the Jan/Feb/Mar issue, unless otherwise requested.