



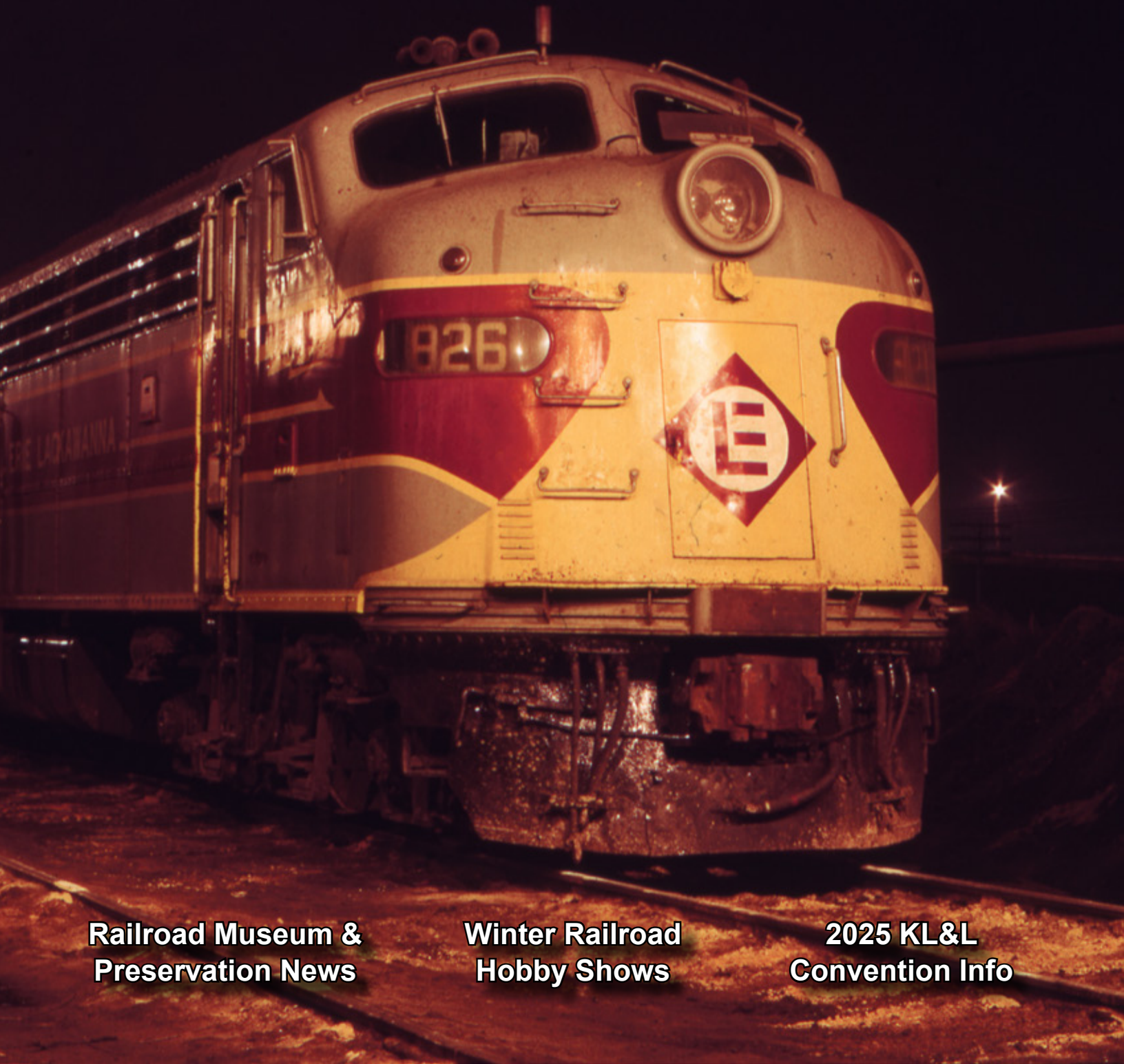
# KEY LOCK & LANTERN NEWS



Dec 2024 / Jan 2025

Issue No.83

*The Bi-Monthly Digital Supplement to Key Lock & Lantern Magazine*



**Railroad Museum &  
Preservation News**

**Winter Railroad  
Hobby Shows**

**2025 KL&L  
Convention Info**



# KEY LOCK & LANTERN NEWS



The Bi-Monthly Digital Supplement to Key Lock & Lantern Magazine  
WWW.KLNL.ORG

**Dec 2024 / Jan 2025** **Issue #83**

From the President's Desk .....	3
Railroad Event Calendar .....	3
Brookline Railroadiana Auction.....	4
Railroad Memories Auction.....	6
JM Hobby Railroadiana Auction.....	8
Rail & Road Auction Report.....	10
2025 Key Lock & Lantern Convention.....	12
WNYRHS Buffalo Train Show.....	14
George Washington Train Show.....	15
Southern California Swap Meet.....	16
Lake Superior Railroad Museum Jazz.....	17
Classified Ads.....	22

**KL&L News Editor.....David Hamilton**

**Send in News & Photos to: [transportsim@aol.com](mailto:transportsim@aol.com)**

The Key, Lock & Lantern News is published bi-monthly as a digital supplement to the quarterly Key, Lock & Lantern magazine. Recipients may repost or forward complete and unmodified copies of this newsletter to other hobbyists and websites, but its content may not otherwise be copied or distributed without the permission of the KL&L Board of Trustees. Copyrights are held by the respective authors and photographers. Excerpts of news items may be published with the credit line "Key, Lock & Lantern News"

Annual membership dues for Key, Lock & Lantern are \$40 for residents of the USA, and \$60 for outside of the USA (by money order or electronic payment in US funds). Members receive four issues of the quarterly KL&L magazine, delivered via first class mail. Memberships for additional family members are \$5 each (only one magazine is sent per family). Applications for membership & address changes should be forwarded to the VP-Membership at the e-mail address listed at right. Online membership forms and dues payment via Paypal are available at [www.klnl.org](http://www.klnl.org).

Contributions of articles, photos, and news may be forwarded to the editor at the e-mail address listed at right. Hard copy articles should be written on 8 1/2 x 11" paper, and typed or neatly printed. Photos should be sent with a caption card attached which includes the contributor's name, phone number, and description. Photocopies of advertising and supply catalogs are acceptable. The submission of material in digital format is preferred, with text files in DOC, TXT, or PDF format, and images in JPG, TIF, BMP or GIF format. Digital files may be sent by e-mail or on a computer CD or flash drive. Please contact the editor regarding optimum file sizes and formats.

By submitting material to Key, Lock & Lantern, the contributor grants permission for use in any edition of the KL&L magazine, digital newsletter, websites, and other publications. All material will be retained by KL&L for future use, unless the contributor specifically requests that it be returned, and includes a suitable, self-addressed, stamped envelope. Current deadlines are listed in the Key, Lock & Lantern Advertising Guide, which is available on the KL&L website at [www.klnl.org](http://www.klnl.org), or by contacting the editor.

## Key, Lock & Lantern

A non-profit membership corporation dedicated to the preservation of transportation history and railroad memorabilia

*The mission of Key, Lock & Lantern is to gather and publish information on the history of the transportation industry, and to support the preservation of railroad artifacts. KL&L members have an interest in all aspects of railroad & transportation history, from research and preservation projects to the conservation and restoration of all types of historical memorabilia. Originally formed in 1966, Key, Lock & Lantern, Inc. was officially incorporated in 1988 as a non-profit, educational, membership corporation in the State of New Jersey, under the provisions of Section 501(c)(3) of the United States Internal Revenue Code. Membership is open to anyone with an interest in transportation history and in achieving the goals of the organization.*

## Officers & Trustees

### Chairman of the Board

John Brainard  
[j944wb@aol.com](mailto:j944wb@aol.com)

### President & Editor

David Hamilton  
[transportsim@aol.com](mailto:transportsim@aol.com)

### VP- Membership / Treasurer

Marie Brainard  
[j944wb@aol.com](mailto:j944wb@aol.com)

### Secretary

Jeremy Tuke

### Chaplain / Sgt at Arms

Chip Greiner

### Historian

Peter Gores

### Trustees at Large

Lyman Gray, Sam Lombardi, Joel Shaw, Sam Ferrara, Leonard Gordy, Bob Lipman, Randy Bushart, William Sternitzke, Bill Roberts, Bob Myers, Joey Senese, Matthew Bushart, Michael Decker

**[www.klnl.org](http://www.klnl.org)**



For Current News  
"Like" KL&L on

**facebook**

## From the President's Desk.....

Once again, another year has gone by and the annual Key Lock & Lantern convention is right around the corner. As seems to happen each year, I've held off on publishing this edition of the newsletter while we ironed out some final details regarding convention schedules and fees. However, with several auction announcements this month, I couldn't wait any longer to send it out. So, convention registration forms will be in the next newsletter, which will go out in a couple weeks.

I'm excited about our train trip this year, as we'll be riding over the former DL&W mainline out of Scranton, a route that we haven't traveled over since 2018. We are still working on the schedule, and the exact destination and stops will be announced when registration forms are sent out. The train consist will include the EL #2 business car, the DL&W caboose, a Comet coach, and the addition of a sleeping car this year.

Of course, the main event of the convention is the show on Saturday, which has grown considerably over the last few years. Somehow, though, it has maintained that small show atmosphere, where you can wander around and visit with fellow historians and collectors. While there is plenty of memorabilia changing hands at the convention, it is the social aspect of the event that makes it so enjoyable. I always manage to bring something home from the show, but it is the evening bull sessions and railroad stories in the lounge that are most memorable.

While we are waiting for the convention, there are plenty of winter and spring railroad hobby shows scheduled for the next few months. While they are all primarily model train shows, many of them also include tables of railroadiana, often offered by KL&L members. Many of these shows serve as fundraisers for local railroad historical societies and museums, so attending them also supports their preservation efforts. I don't often make big purchases at hobby shows, but I usually find something to make them worth the trip.

The railroad auction calendar is packed full over the next few weeks, too, with several major collections slowly being dispersed, along with a steady stream of consignments. With so much memorabilia on the market lately, it would seem like prices would be affected, but the higher end items still command top dollar. Even the mid-range artifacts continue to sell well, but are perhaps a little more affordable for the entry-level collector. The stuff that I am looking for always seems to go high, though!

I'm wrapping up production on the next issue of the print KL&L magazine, after some delays caused by work and personal business that needed attention. So, it won't be too much longer before another magazine is in everyone's hands. Thanks for your patience, while I try to balance volunteering at KL&L with everything else.

And as always, thanks for everyone's ongoing support of KL&L!

*Dave Hamilton*

KL&L President & Editor

## Railroad Event Calendar



**Upcoming historical society conventions, special events, railroadiana shows & auctions. Listings subject to change. Check show web sites before traveling and visit [www.klnl.org](http://www.klnl.org) for updates. See submission guidelines at the end of the calendar.**

**Look for Advertisements in this Issue & on the Key Lock & Lantern Website for [Events Shown in Blue](#)**

- Feb 8**      **Boonsboro, MD** - Hagerstown Railroad Museum Train Show.  
Info: [www.antietamstation.com](http://www.antietamstation.com).
- Feb 8**      **Jacksonville, FL** - Jacksonville Rail Fair - Golden Spike Enterprises.  
Info: [www.gserr.com](http://www.gserr.com).
- Feb 9**      **Georgetown, CO** - Railroadiana Consignment Auction. Railroad Memories.  
Info: [www.railroadmemories.com](http://www.railroadmemories.com)
- Feb 15-16** **Buffalo, NY** - Western NY Train Show. Erie County Fairgrounds Event Center.  
Info: [www.wnyrhs.org](http://www.wnyrhs.org).
- Feb 15**      **Houston, TX** - Greater Houston Train Show. San Jacinto Model RR.  
Info: <https://www.sanjacmodeltrains.org>.
- Feb 15-16** **Lincoln, NE** - Lincoln Area Railway Historical Society Train Show.  
Info: <https://larhs.org>.
- Feb 21-22** **Fletcher, NC** - Asheville Train Show. WNC Agricultural Center.  
Info: [www.asheville-trainshow.com](http://www.asheville-trainshow.com).
- Feb 22-23** **Allentown, PA** - Spring Thaw Train Show. Allentown Train Meet Associates  
Info: [www.allentowntrainmeet.com](http://www.allentowntrainmeet.com).

*Continued on Page 23*

Front Cover: Erie Lackawanna power on the Bison Yard service track in March, 1973.  
David Turkon photo / KL&L Archives.

# Brookline Auction Gallery Continues to Sell Several Large Railroadiana Collections

A variety of rare and unusual railroadiana continues to flow through the Brookline Auction Gallery, with several large collections being sold. While many auctions have shifted to an online-only format, Brookline continues to hold onsite sales, with online bidding also offered. *Photos and prices realized courtesy of Brookline Auction Gallery and do not include buyers premiums and shipping.*



A \$350 bid was needed to buy this Maine Central Bangor pattern 7 5/8" plate with M-L China hallmark.



A brass Handlan Buck presentation lantern with green over clear globe went to a new home for an \$825 bid.



Seneca Lake and Lake Keuka Steam Navigation passes sold for a high bid of \$550 for the pair.



A \$220 bid purchased this Central Vermont Railroad trainman "flat back" badge hallmarked by Robbins.

Continued on Page 18

# Railroadiana Auctions - Spring & Fall - Brookline, NH

Railroadiana Consignment Auctions Held Each Spring & Fall

Brookline Auction Gallery LLC - 32 Proctor Hill Rd, Brookline, NH 03033

[www.brooklineauctiongallery.com](http://www.brooklineauctiongallery.com)

Scott Czaja - Sales Manager

## Next Sale: April 25 & 26, 2025

### Featuring Consignments & Several Prominent Collections

## Some Highlights of the Recent Sales



Lehigh & Hudson River Lantern:  
Sold for \$4600



Northern Central Railway Lock:  
Sold for \$2100



Erie Lantern With Green Cast  
Globe: Sold for \$2000



Chateaugay Railroad Baggage  
Tag: Sold for \$425



Lackawanna Railroad High Voltage  
Catenary Sign: Sold for \$1000



Boston & Albany Police Badge:  
Sold for \$375

Now on [LiveAuctioneers.com](http://LiveAuctioneers.com) - We also accept absentee bids via: e-mail & mail  
Quality consignments are welcome for future sales - email Scott: [sczaja@hotmail.com](mailto:sczaja@hotmail.com)

# A Large Selection of Railroad Memorabilia is Featured in Railroad Memories Auction

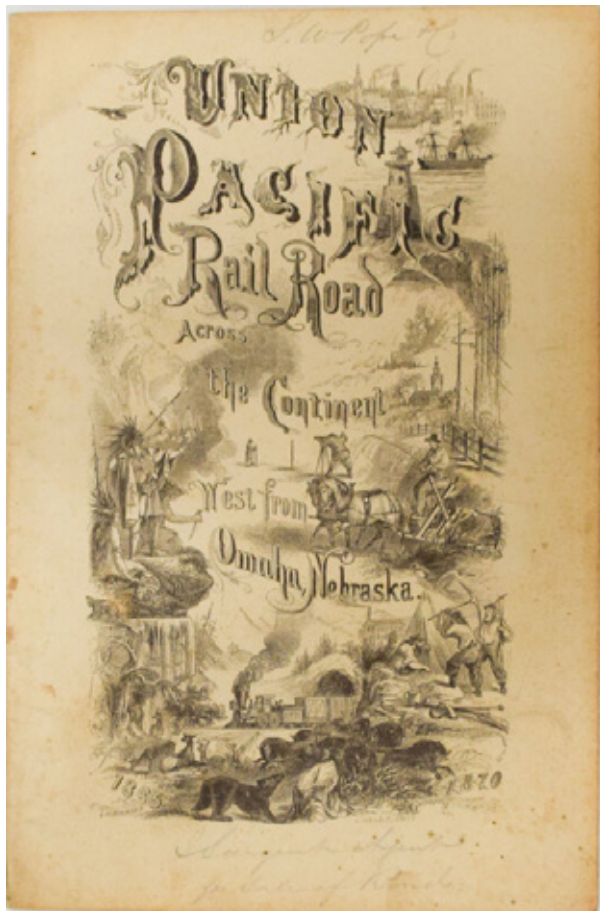
Railroad Memories continues to offer high end railroadiana in its catalog and online auctions, with several well known collections gradually being dispersed to new owners. There is much more to come in upcoming sales, with the usual selection of western material and some from the east coast. *Photos and prices realized courtesy of Railroad Memories Auctions and do not include buyers premiums and shipping.*



A \$1300 bid was needed to buy this 1881 Denver & Rio Grande pass with Royal Gorge & La Veta Pass vignettes.



A nickel plated brass presentation lantern with a wheel cut red over clear globe went to a new owner for \$3400.



An 1865 Union Pacific brochure highlighting progress on the transcontinental railroad sold for a high bid of \$800.



An \$1800 bid purchased this Union Pacific Columbine pattern demitasse set by Onondage Pottery of Syracuse.

Continued on Page 19

# Railroad Memories

AUCTION CATALOG #121

Bids Begin Closing Sunday February 9, 2025, at 8pm MTN



LOT 121



LOT 267



LOT 37



LOT 279



LOT 351



LOT 145



LOT 288



LOT 504



LOT 283



LOT 176



LOT 366



LOT 299



LOT 391



LOT 301



LOT 363

P.O. Box 415; Georgetown, CO 80444  
303-569-5185

email: [railroadmemories@gmail.com](mailto:railroadmemories@gmail.com) website: [www.railroadmemories.com](http://www.railroadmemories.com)

# JM Hobby Offers Large Variety of Railroad Artifacts and Model Trains in Fall Auction

The fall auction by JM Hobby Supply & Railroad Artifacts had something for every collector, from top shelf memorabilia to reasonably priced lots. A large collection of model trains rounded out the two day sale. There are more collections on deck for the spring auction, and consignments are still being accepted. *Photos and prices realized courtesy of JM Hobby Supply & Railroad Artifacts and do not include buyers premiums and shipping.*



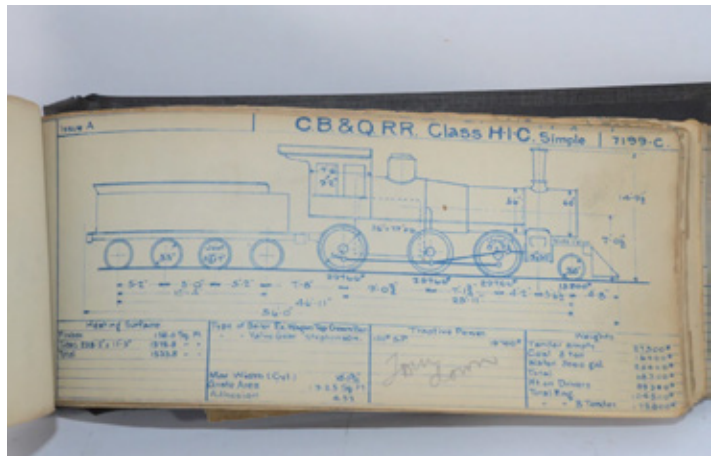
*The cast iron keystone number board from Pennsylvania Railroad locomotive 3378 sold for a \$1400 high bid.*



*A \$325 high bid bought this nicely restored & complete Adlake switch lamp from the Illinois Central Railroad.*



*A \$250 bid was needed to purchase this scarce 1865 Black's Road & Railway Travelling Map of Scotland.*



*A Chicago Burlington & Quincy steam locomotive diagram book went to a new railroad historian for a \$200 bid.*

*Continued on Page 20*



# JM HOBBY SUPPLY & RAILROAD ARTIFACTS

## Railroad Artifact Auction

In Conjunction with Ihander Auctioneering

**Saturday & Sunday, March 8-9, 2025 - 9AM CST**

**Over 1,100 Lots to be Sold from Several Large Estates**

Hundreds of rare railroad switchman, marker, class, and switch lamps/lanterns, including fine examples from the ERIE, MT, CC&CS, LS&MS, CNS&M, CN, C&S, D&RGW, FITCHBURG, and many more! Two big estates of railroad China and Silver! Employee & public timetables, rare books, 2 railroad photo collections, RR maps, and RR paper! Lot of brass keys, brass steam loco bell, step boxes, and smoking stands! Many cast iron and metal signs, plus RR lantern parts!



**WE OFFER THE LOWEST SELLERS COMMISSIONS AND BUYERS FEES IN THE U.S.A!**

**SHIPPING IS AT ACTUAL COST....NOT INFLATED!**

Call us today to discuss selling your collection at 920-857-9670!

PO Box 25, Luxemburg, WI 54217

Online catalog & bidding is available at <https://jmhobbysupply.hibid.com/>

Email us at [jmhobbysupplyandrrartifacts@gmail.com](mailto:jmhobbysupplyandrrartifacts@gmail.com)

Or visit our website at [www.jmhobbysupply.com](http://www.jmhobbysupply.com)

# Rail & Road Auctions Starts the New Year With Two-Day Online Railroadiana Auction

Rail & Road Auctions is not slowing down, with live online auctions held monthly, featuring memorabilia of every sort from all over the country. From higher end artifacts to bargain lots for newer collectors, there has been something for everyone in recent auctions, with plenty to come in upcoming sales. *Photos and prices realized courtesy of Rail & Road Auctions and do not include buyers premiums and shipping.*



A \$2600 bid purchased this pair of partially restored Pyle National locomotive classification lamps.



A new old stock J.H. Bunnell & co. telegraph resonator box and arm with original hardware sold for a \$450 bid.



A cast iron Pennsylvania Railroad keystone whistle sign went to a new home for a high bid of \$1100.

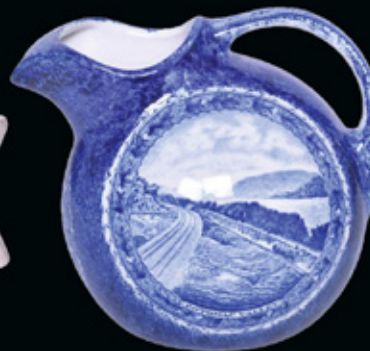


A \$275 bid sent this 1893 Richmond & Danville Railroad annual pass home to a new collector.

Continued on Page 21

# RAIL & ROAD AUCTIONS

2-Day Railroadiana Auction  
February 27-28, 2025



View the catalogs on our website & register to bid.  
Rail & Road offers online, absentee, and telephone bidding.



## RAIL & ROAD AUCTIONS

[WWW.BIDRAR.COM](http://WWW.BIDRAR.COM)

765-412-7926



# All Aboard for the 2025 Key Lock & Lantern Convention



Key Lock & Lantern will return to anthracite country for the 2025 annual convention, to be held over the weekend of May 8-11, 2025. Convention headquarters will once again be the historic Hotel Anthracite in Carbondale, PA, with most events taking place in the hotel. This year's train ride will be hosted by the Delaware-Lackawanna Railroad and will depart from Scranton, PA, for a round trip over the former DL&W mainline. Registration will be open soon, and will be announced on the KL&L website, Facebook page, and a mailing will be sent out to members.

Convention activities will begin on Thursday, May 8th, with an informal gathering at the hotel, early trading, and the traditional "room hopping" where participants can get a head start on buying and selling memorabilia.

On Friday, May 9th, a chartered excursion train will operate over the DL&W main, on a route that hasn't seen a KL&L trip since 2018. Final details regarding the schedule and end point of the excursion are still being worked out, and will be available when registration opens in the next week or two. Equipment will once again consist of the Erie Lackawanna business car #2, comet coaches, and the DL&W caboose.



On Saturday, May 10th, the "Gravity Hall" banquet room at the Hotel Anthracite will be transformed into an exhibit hall filled with transportation memorabilia for sale and on display. KL&L members will present exhibits of artifacts from their collections, and offer a wide variety of railroading memorabilia for sale or trade.



*Continued on Page 13*

# 2025 KL&L Convention

Continued from Page 12

A buffet dinner will be served on Saturday evening, followed by railroad history programs presented by KL&L members and railroad historians.

The schedule for Sunday will be left open for attendees to visit Steamtown and other local historic sites, go railfanning in the region, or head home for Mother's Day dinner. All throughout the weekend, there are plenty of opportunities to network with fellow collectors, share railroad stories, and make new friends. With the convention focused on history and collecting, there is plenty of time to see everything and visit with other history buffs, without the need to walk around a large show.



The Hotel Anthracite has a special rate for the convention of \$107 per night, plus taxes & fees, which is unchanged from last year. To book a room at this price, call the hotel directly at 570-536-6020, and ask for the Key Lock & Lantern convention rate.

Once train excursion schedules and rates are finalized, registration forms will be mailed out, and online registration will open at [www.klnl.org](http://www.klnl.org). To receive notifications about the convention, be sure to follow KL&L on Facebook and sign up for the KL&L email list at [www.klnl.org](http://www.klnl.org), if you did not receive a link to this newsletter. All aboard for the 2025 Key Lock & Lantern Convention!



# Western New York Railway Historical Society to Hold Winter Train Show

The Western New York Railway Historical Society will hold its annual winter Train and Toy Show over the weekend of February 15th & 16th. The Events Center at the Erie County Fairgrounds in Hamburg, NY will be filled with operating model train layouts, railroad displays, and over 350 tables of exhibits and vendors.

Some of the groups scheduled to set up layouts at the show include the Niagara Orleans Model Railroad Engineers, and the FCTT HiRailers. Five layouts will be in operation, representing HO, N, O and S scales. There will also be Lego train layouts and a “Thomas the Tank Engine and Friends” play area for the kids.



Several guest speakers are lined up to give presentations on both days, and other local historical societies are expected to exhibit at the show. Representatives of the Niagara Frontier Chapter of the National Railway Historical Society, the Nickel Plate Historical Society, and the Salamanca Rail Museum will be on hand to give updates about their activities.

While most vendors typically offer model trains, books, and videos for sale, several railroadiana collectors (including



*A recently restored Lehigh Valley locomotive on display at the WNYRHS Williamsville, NY depot museum.*

members of KL&L) are expected to attend. There is usually some interesting memorabilia to be found among the many tables, and some good deals for those who arrive early.

The show is open from 10am to 5pm on Saturday and from 10am to 4pm on Sunday, with an \$8 entry fee for adults and children under 12 admitted for free. All proceeds will benefit the many significant preservation projects of the Western New York Railway Historical Society, which operates the Heritage DiscoverY Center in Buffalo and has restored depots and rolling stock at several locations in western New York. For more information, visit the WNYRHS website at <http://www.trainweb.org/wnyrhs>. *Photos by WNYRHS.*



*The society's cosmetically restored Pennsylvania Railroad I-1s Class Baldwin decapod steam locomotive No. 4483.*

## KEY LOCK & LANTERN

Ads Reach Serious Railroad Enthusiasts  
Contact KL&L at [transportsim@aol.com](mailto:transportsim@aol.com)

# George Washington Train Show to Be Held by C&O Historical Society in Clifton Forge

The Chesapeake & Ohio Historical Society will be holding its annual George Washington Train show in Clifton Forge, Virginia on February 22nd & 23rd. Events will take place at both the C&O Railway Heritage Center on Main Street, and at the Clifton Forge Armory.

The society is excited to announce the return of the multi-location show. An annual fundraiser for the non-profit organization, for the first time since the pandemic, the event will return to the Clifton Forge Armory in addition to the C&O Railway Heritage Center. For 2025, the C&O Historical Society is excited to continue this traditional event that allows for additional vendor space during the two-day event in Clifton Forge.



The C&O Railway Heritage Center is located at 701 Main Street and the Clifton Forge Armory is at 724 Commercial Avenue. For \$5 admission, guests receive access to both locations that will feature vendors, speakers, food, exhibits, gift shopping, and more. Show hours are 10am to 4pm on Saturday and 12pm to 4pm on Sunday.

For more information about the George Washington Train Show, the C&O Railway Heritage Center, and the Chesapeake & Ohio Historical Society, call 540-862-2210 or visit <https://chessishop.com>. *News & photos courtesy of C&O Historical Society.*



# Southern California Railway Museum to Hold Swap Meet & Pacific Electric Day

The Southern California Railway Museum (formerly known as the Orange Empire Railway Museum) will hold its annual spring outdoor railroading swap meet on March 8, 2025, on the grounds of the museum in Perris, CA. Vendors will be selling authentic railroad memorabilia, collectibles, artwork, books, and model trains. This event is southern California's largest outdoor railroad swap meet, with flea market style spaces available to exhibitors for a \$25 fee.

In addition to vendors, several railroad historians and preservationists will be on hand to present information about the history of railroading in southern California. The event is held in conjunction with the museum's "Pacific Electric Day," celebrating the history of the red interurban trolley cars that were once a familiar sight in the region.



The Mainline "Blimp" Train #418 & #498 will depart on the hour between 11am and 4pm, while Mainline Pacific Electric #717 will run on the half hour between 11:30am and 4:30pm. The Birney Loop Line #332 will depart for rides on demand between 11am and 4pm. Swap Meet hours are 9am to 2pm. Admission to the swap meet is \$10 for adults and \$9 for children, with tickets that include the trolley rides available for \$15 for adults and \$14 for children.



Vendor space is available on a first-come basis, with setup beginning at 7am at the back gate on Mapes Road. Dealers must bring their own tables, chairs, and tents, and may pay the \$25 fee upon arrival.

Founded in 1956 by members of the Southern California Division of the Electric Railroaders Association, the museum maintains a collection of over 35 pieces of equipment from the Pacific Electric Railway, 25 Los Angeles Railway cars, and rolling stock from other regional electric railways. Over the years, this collection has been supplemented by diesel locomotives and cars from the Union Pacific, the Santa Fe, and the Southern Pacific railroads.

For more information about the Southern California Railway Museum, the swap meet, and other upcoming events, visit their website at <https://socalrailway.org>. *Photos courtesy of Southern California Railway Museum.*



# Jazz Performances Return to Lake Superior Railroad Museum During Winter Months

The winter months are usually the “off season” for railroad museums in the northern half of the United States and Canada, with less tourist travel taking place and cold weather limiting their activities. The Lake Superior Railroad Museum in Duluth, MN is certainly in the heart of snow country, but with a large indoor exhibit space, it is only a matter of holding events to encourage visitors to brave the elements and make a winter visit.



The Lake Superior Railroad Museum is the main attraction in the restored Duluth Union Depot, with a large collection of rolling stock displayed along the former platforms. With interactive exhibits about the region’s transportation history, the museum appeals to both serious historians and family members alike.

From Memorial Day through mid-October, excursion trains of the North Shore Scenic Railroad operate from the station, utilizing historic equipment from the museum’s collection. A summer or fall visit to the museum can include a ride on this scenic trip on the Lakefront Line along Lake Superior.



Beginning during the month of January and continuing through April, the museum will be hosting Jazz concerts on each Saturday afternoon, from 3-6pm. The Trackside Depot Jazz Band will perform live in the train shed, along side the museum’s collection of historic equipment.

The music of Bennie Goodman and other classic musicians will echo throughout the building, along with other selections from the past and modern eras of jazz. Museum Executive Director Ken Buehler will add some railroad history into the day’s performance, with his railroad stories. Admission to the event is \$7 per person, which includes entry to the museum.



With all indoor exhibits, the museum is open year round, seven days a week, from 10am to 5pm in the winter and from 10am to 6pm in the summer. It is closed on major holidays and any time the Duluth Transit Authority shuts down bus service due to snow. For more information, visit the museum website at <https://lsrm.org>. *Photos courtesy of LSRM.*



**KEY LOCK & LANTERN**

Ads Reach Serious Railroad Enthusiasts  
Contact KL&L at [transportsim@aol.com](mailto:transportsim@aol.com)



A depot baggage tag from the Lehigh Valley Railroad Waverly, NY station sold for a \$325 high bid.



A \$625 bid took home this Central Railroad of New Jersey brass top with clear cast CRR of NJ globe.



An \$825 bid bought this fancy cast back lock from the Northern Central Railway by S&M of Philadelphia.



A Delaware & Hudson Coal Company D&H logo Lackawanna Anthracite sign sold for \$220.



A \$925 bid purchased this American Railway Association 28x22" highway grade crossing safety poster.



A Denver & Rio Grande RR fancy cast back brass lock with matching D&RG key went to a new home for \$3500.



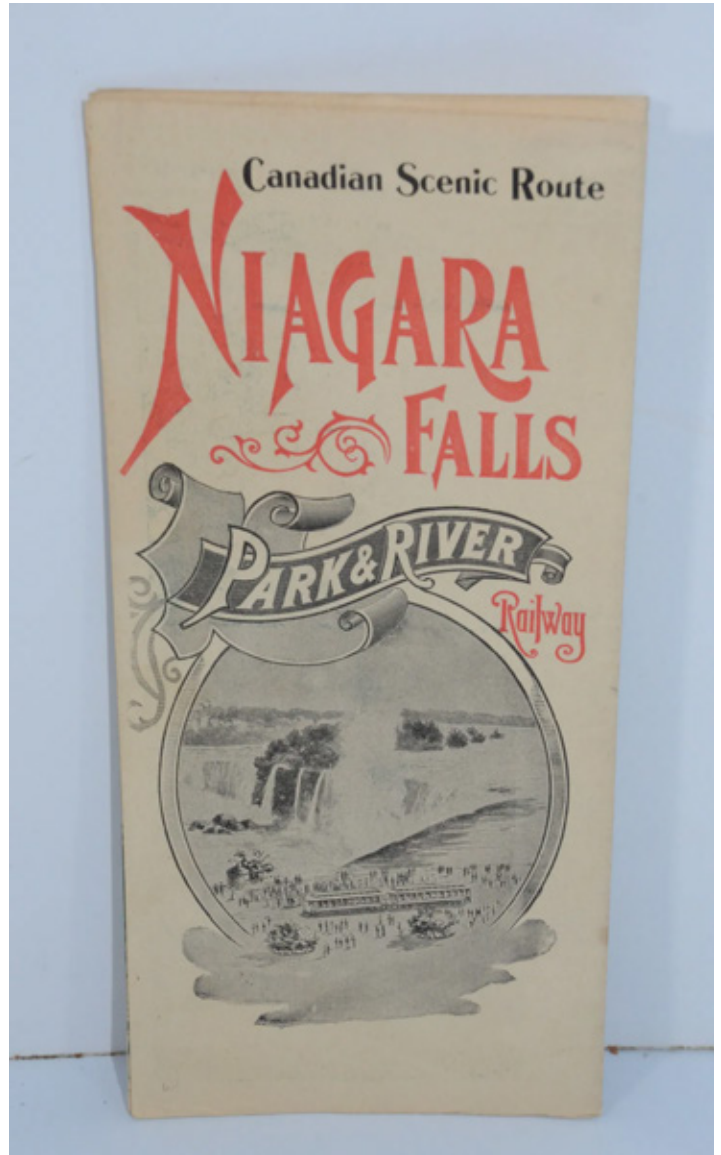
A red cast CM&STPRR globe raised the price of this Chicago Milwaukee & St. Paul lantern to \$1450.



A \$3100 bid sent this 41" tall Chicago Aurora & Elgin Railroad porcelain depot sign to a new owner.



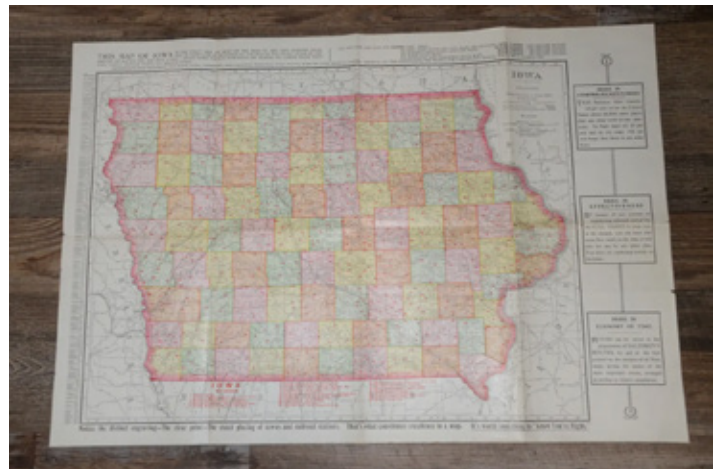
*A \$325 bid bought this complete 1913 wood and brass telephone with "Property of Penna. R.R. Co." tag.*



*An 1898 Niagara Falls Park & River Railway promotional brochure with a nice cover sold for a high bid of \$80.*



*A Louisville & Nashville RR milk can, also marked for the Tri State Butter Company went to a owner for \$275.*



*A \$110 bid took home this 32x22" 1905 Rand McNally & Company Railroad Map of the state of Iowa.*



*A \$1050 bid was needed to buy this original Howard Fogg watercolor painting of a Santa Fe steam train.*



*A section of the famous New York Central 20th Century Limited red carpet sold for a high bid of \$7700.*



*A complete deck of playing cards from the Chicago North Shore & Milwaukee Railroad sold for a high bid of \$300.*



*An \$1850 bid sent this 19x13" Railway Express Agency tin lithograph advertising sign to a new collection.*

**KEY LOCK & LANTERN**  
Can Help Promote Your  
**Auction, Show or Event**  
Contact KL&L at [transportsim@aol.com](mailto:transportsim@aol.com)



*Four pieces of Soo line Logan pattern china, including plates, a saucer, and bouillon cup, sold for \$300.*

# CLASSIFIED ADS

Classified ad listings are free for Key Lock & Lantern members. Ad size must fit in four lines, and must include a name and contact email address (the word "at" may be substituted for "@" in the email address, if desired) or website address. A maximum of two ads per person may be run at the same time. Send ads to Dave Hamilton at [transportsim@aol.com](mailto:transportsim@aol.com).

## Auctions

**Brookline Auction Gallery.** Brookline, NH. Railroadiana consignment & estate auctions. Contact sales manager Scott Czaja at [sczaja@hotmail.com](mailto:sczaja@hotmail.com) or visit [www.tagtown.net](http://www.tagtown.net).

**JM Hobby Supply & Railroad Artifacts.** Luxemburg, WI. Railroadiana consignment & estate auctions. Contact John DeBeck at [jmhobbysupplyandrrartifacts@gmail.com](mailto:jmhobbysupplyandrrartifacts@gmail.com) or visit [www.jmhobbysupply.com](http://www.jmhobbysupply.com).

**Railroad Memories.** Georgetown, CO. Online consignment & estate auctions. Contact Sue Knous at [railroadmemories@gmail.com](mailto:railroadmemories@gmail.com) or visit [www.railroadmemories.com](http://www.railroadmemories.com).

**Rail & Road Auctions.** Lafayette, IN. Online railroadiana auctions. Contact Derek Thomas at [info@RARauctions.com](mailto:info@RARauctions.com) or visit <https://rarauctions.com>.

## Locks & Keys

**Wanted: Switch Key** from the Baltimore Transit Company (B T Co.) Will pay a good price for a key in decent condition. Dan Allen: [NJSRR\(at\)aol.com](mailto:NJSRR(at)aol.com).

**Wanted: Locks** - fancy cast back railroad switch locks. Warren Nyerges: email [warrennyergesjr@hotmail.com](mailto:warrennyergesjr@hotmail.com) or visit [www.antiquerailroadlock.com](http://www.antiquerailroadlock.com).

## Locomotive & Rolling Stock Hardware

**Builder's Plates for Sale.** Original steam, diesel & electric builder's & number plates. Contact us for a current list of plates. Ron Muldowney: [rjmuldowney@comcast.net](mailto:rjmuldowney@comcast.net).

## Railroadiana Dealers

**Times Treasures** Railroad & Country Collectibles on Ruby Lane. All types of railroadiana, with new items added on a regular basis. <http://www.rubylane.com/shop/timestreasures>

## Timetables & Paper

**Wanted:** Interested in buying railroad paper collections, especially pre-1950 public and employee timetables, passes, name train and travel brochures and dining car menus. No collection too small or large to be of interest. Willing to travel to purchase and pick-up. 45 years in the railroadiana collecting hobby and strict confidence assured. Please contact Doug McIntyre at [dm021949@aol.com](mailto:dm021949@aol.com).

**Wanted:** Delaware & Hudson RR Employee Timetable #3 dated April 28, 1940. Also, anything related to Wayland, MA, on the Boston & Maine and Central Mass Railroad. Contact Rick Conard at [RRConard@earthlink.net](mailto:RRConard@earthlink.net)

## Trolleys & Transit

**Wanted: Photos of Syracuse, NY** trolley car #1024 & trolley cars around Syracuse University & Archbold Stadium. Dave Hamilton: [transportsim@aol.com](mailto:transportsim@aol.com).

*Want Ads Are Back!*

*Free for KL&L  
Members!*

*Read Submission  
Guidelines & Send to  
the Editor!*

The Bi-Monthly Digital

**KEY LOCK & LANTERN NEWS**

Sent by Email Link to 520+ Subscribers

Visible to 200+ Daily Website Visitors

Appears in Internet Searches

Submit your ad to: [transportsim@aol.com](mailto:transportsim@aol.com)

- Feb 22-23** Clifton Forge, VA - George Washington Train Show - C&O Historical Society.  
Info: [www.cohs.org](http://www.cohs.org).
- Feb 22-23** Colorado Springs, CO - Train Expo Colorado Train Show.  
Info: [www.tecoshow.org](http://www.tecoshow.org)
- Feb 23** Buena Park, CA - California Express Railroadiana Show.  
Info: [www.californiaexpress.net](http://www.californiaexpress.net).
- Feb 27-28** Lafayette, IN - Railroadiana Auction. Rail & Road Auctions.  
Info: <https://rarauctions.com>
- Mar 2** Clark, NJ - Jersey Central NRHS Train Show. Mother Seton High School.  
Info: [www.jcrhs.org](http://www.jcrhs.org).
- Mar 8** Harrisburg, PA - Harrisburg NRHS Railroad Show & Collectors Market.  
Info: <https://www.harrisburgnrhs.org/>
- Mar 8-9** Luxemburg, WI - Railroadiana Auction. JM Hobby Supply & Railroadiana.  
Info: [www.jmhobbysupply.com](http://www.jmhobbysupply.com)
- Mar 8** Perris, CA - Southern California Railway Museum Swap Meet.  
Info: [www.socalrailway.org](http://www.socalrailway.org).
- Mar 8** St. Cloud, MN - Granite City Railroad Show St. Cloud, MN.  
Info: [www.granitecitytrainshow.com](http://www.granitecitytrainshow.com).
- Mar 9** Spokane, WA - Spokane Train Show - River City Modelers.  
Info: [www.rivercitymodelers.org](http://www.rivercitymodelers.org).
- Mar 15** Corvallis, OR - Winterail Photo Expo & Railroad Collectibles Sale.  
Info: [www.winterail.com](http://www.winterail.com).
- Mar 15-16** Painesville, OH - Painesville Railroad Museum Rail Fest.  
Info: [www.painesvillerrailroadmuseum.org](http://www.painesvillerrailroadmuseum.org).
- Mar 23** Kingston, NY - Railroad Hobby Show. Murphy Midtown Center.  
Info: [www.kingstontrainshow.com](http://www.kingstontrainshow.com).
- Apr 5-6** Calgary, AB - Calgary Super Train Railroad Show.  
Info: [www.supertrain.ca](http://www.supertrain.ca).
- Apr 5** DeLand, FL - Florida Rail Fair. Golden Spike Enterprises  
Info: [www.gserr.com](http://www.gserr.com).
- Apr 5-6** Denver, CO - Rocky Mountain Train Show. Train Collectors Association.  
Info: <http://rockymountaintrainshow.com>

## Send listings to: [transportsim@aol.com](mailto:transportsim@aol.com)

There is no charge for calendar listings. Train shows must include dealers of authentic railroad memorabilia or related material, and auctions must include at least 20 lots of railroadiana. Other events must be directly related to railroad history (special exhibitions, lecture programs, conventions, limited excursions, etc.). Regular monthly group meetings, model train meets & scheduled tourist train trips are not eligible, unless related to a special event. Events are listed space permitting, at the editor's discretion. Listings are subject to error or change. Always check show web sites before traveling.

Visit [www.klnl.org](http://www.klnl.org) for More Listings

# Key Lock & Lantern News & Information

## Key Lock & Lantern Email List

If you are not already receiving the link to this newsletter directly from KL&L, go to the "Contact KL&L" page on the Key Lock & Lantern website at [www.klnl.org](http://www.klnl.org) and sign up for our email list. You will receive links to the *KL&L News* when it is published and occasional notifications of events of interest to members. The email list is hosted by MailChimp, which makes it easy to unsubscribe at any time, and KL&L never sells or shares its email list with outside parties. Don't miss important news and announcements - sign up today!

## KL&L Facebook Page

For current news and announcements, visit the Key Lock & Lantern page on Facebook at <https://www.facebook.com/railroadiana>. Up to date information about the Key Lock & Lantern Convention, newsletter & magazine publication, and upcoming shows and auctions is posted on the page. There are also hundreds of photos of modern & historical railroad operations, railroad & transportation memorabilia, and views of recent shows and events. Be sure to "follow" the page, so that posts show up in your news feed.

## KL&L YouTube Channel

The Key Lock & Lantern YouTube channel showcases videos of modern and historical railroad operations, steam train excursions, and KL&L Convention highlights. Visit the channel at <https://www.youtube.com/user/KeyLockLantern>. Be sure to hit the subscribe button and leave comments on the videos that you enjoyed!

## Want Ads for KL&L Members

As noted in previous issues, the "Want Ad" section of the *KL&L News* is undergoing an update to remove outdated notices. If you would like to submit an ad for inclusion in future issues, contact KL&L editor Dave Hamilton at [transportsim@aol.com](mailto:transportsim@aol.com). Basic want ads are free for current Key Lock & Lantern members.

## Member Address Changes & Corrections

The *Key Lock & Lantern* magazine is sent via First Class Mail and is therefore forwarded by the U.S. Postal Service for the designated period following an address change. However, due to the frequency of publication of the magazine, the time for forwarding may expire in between issues, and your magazine may be returned to KL&L. Please make sure that Key Lock & Lantern is on your list of organizations to notify in the event of a change of address. Also, please check your mailing label when receiving your copy of the magazine, and advise KL&L if any corrections are needed. Contact Marie Brainard at [j944wb@aol.com](mailto:j944wb@aol.com) if changes are required.



For News & Information, Visit the KL&L Page on Facebook. Use the link at [www.klnl.org](http://www.klnl.org).

# KEY LOCK & LANTERN

Can Help Promote Your  
**Auction, Show or Event**

With Advertising in KL&L Publications

**2800+ Facebook Followers**

**200+ Daily Website Visits**

**520+ Newsletter Subscribers**

Contact KL&L Editor Dave Hamilton at  
[transportsim@aol.com](mailto:transportsim@aol.com)



**All submissions for the KL&L magazine,  
news items for the digital KL&L News  
& general inquiries should be sent to:**

KL&L President & Editor  
David Hamilton  
E-mail: [transportsim@aol.com](mailto:transportsim@aol.com)

**Send membership applications, dues  
payments, and address changes to:**

KL&L Chairman John Brainard &  
VP-Membership Marie Brainard  
E-mail: [j944wb@aol.com](mailto:j944wb@aol.com)

Join or Renew Your  
**KEY LOCK & LANTERN**  
Membership Online at  
[www.klnl.org](http://www.klnl.org)

## KL&L Membership Form (2024-2025 Membership Year)

Please make check or money order payable to Key, Lock & Lantern, Inc. and forward to:  
Marie Brainard, KL&L Membership, 35 Nordhoff Place, Englewood, NJ 07631-4810

Name \_\_\_\_\_

Representing (business or museum, if applicable) \_\_\_\_\_

Address \_\_\_\_\_

City \_\_\_\_\_ State/Prov \_\_\_\_\_ Zip/Mail Code \_\_\_\_\_

Phone \_\_\_\_\_ E-mail \_\_\_\_\_

Basic membership at \$40 per year (1st Class mailing in USA) or \$60 per year (non-USA).....\$ \_\_\_\_\_

Additional Donation.....\$ \_\_\_\_\_

Enclosed is my check / money order payable to Key Lock & Lantern, Inc. for.....\$ \_\_\_\_\_

Membership in KL&L includes 4 issues of the printed magazine, special member rates for KL&L Convention registration, and access to "members only" content on the KL&L website. New members joining before September will receive all previously published magazines for the year, and will be due for renewal in the following January. New members joining in September or later will have their dues applied to the next membership period, beginning with the Jan/Feb/Mar issue, unless otherwise requested.