



# KEY LOCK & LANTERN NEWS



Jul/Aug 2024

Issue No.80

*The Bi-Monthly Digital Supplement to Key Lock & Lantern Magazine*



**Railroad Museum &  
Preservation News**

**Spring Railroad  
Auction Reports**

**KL&L Convention  
in Carbondale**



# KEY LOCK & LANTERN NEWS



The Bi-Monthly Digital Supplement to Key Lock & Lantern Magazine  
WWW.KLNL.ORG

## Key, Lock & Lantern

A non-profit membership corporation dedicated to the preservation of transportation history and railroad memorabilia

*The mission of Key, Lock & Lantern is to gather and publish information on the history of the transportation industry, and to support the preservation of railroad artifacts. KL&L members have an interest in all aspects of railroad & transportation history, from research and preservation projects to the conservation and restoration of all types of historical memorabilia. Originally formed in 1966, Key, Lock & Lantern, Inc. was officially incorporated in 1988 as a non-profit, educational, membership corporation in the State of New Jersey, under the provisions of Section 501(c)(3) of the United States Internal Revenue Code. Membership is open to anyone with an interest in transportation history and in achieving the goals of the organization.*

### Officers & Trustees

#### Chairman of the Board

John Brainard  
j944wb@aol.com

#### President & Editor

David Hamilton  
transportsim@aol.com

#### VP- Membership / Treasurer

Marie Brainard  
j944wb@aol.com

#### Secretary

Jeremy Tuke

#### Chaplain / Sgt at Arms

Chip Greiner

#### Historian

Peter Gores

#### Trustees at Large

Lyman Gray, Sam Lombardi, Joel Shaw, Sam Ferrara, Leonard Gordy, Bob Lipman, Randy Bushart, William Sternitzke, Bill Roberts, Bob Myers, Joey Senese, Matthew Bushart, Michael Decker

[www.klnl.org](http://www.klnl.org)



For Current News  
"Like" KL&L on

facebook

## July/August 2024 Issue #80

From the President's Desk .....	3
Railroad Event Calendar.....	3
Brookline Railroadiana Auction.....	4
Railroad Memories Auction.....	6
JM Hobby Railroadiana Auction.....	8
Rail & Road Auction Report.....	10
2024 Key Lock & Lantern Convention.....	12
Schoharie Railroad Museum Show.....	16
Southern California Swap Meet.....	17
Classified Ads.....	22
KL&L News & Information.....	23

**KL&L News Editor.....David Hamilton**

**Send News Items to [transportsim@aol.com](mailto:transportsim@aol.com)**

The Key, Lock & Lantern News is published bi-monthly as a digital supplement to the quarterly Key, Lock & Lantern magazine. Recipients may repost or forward complete and unmodified copies of this newsletter to other hobbyists and websites, but its content may not otherwise be copied or distributed without the permission of the KL&L Board of Trustees. Copyrights are held by the respective authors and photographers. Excerpts of news items may be published with the credit line "Key, Lock & Lantern News"

Annual membership dues for Key, Lock & Lantern are \$40 for residents of the USA, and \$60 for outside of the USA (by money order or electronic payment in US funds). Members receive four issues of the quarterly KL&L magazine, delivered via first class mail. Memberships for additional family members are \$5 each (only one magazine is sent per family). Applications for membership & address changes should be forwarded to the VP-Membership at the e-mail address listed at right. Online membership forms and dues payment via Paypal are available at [www.klnl.org](http://www.klnl.org).

Contributions of articles, photos, and news may be forwarded to the editor at the e-mail address listed at right. Hard copy articles should be written on 8 1/2 x 11" paper, and typed or neatly printed. Photos should be sent with a caption card attached which includes the contributor's name, phone number, and description. Photocopies of advertising and supply catalogs are acceptable. The submission of material in digital format is preferred, with text files in DOC, TXT, or PDF format, and images in JPG, TIF, BMP or GIF format. Digital files may be sent by e-mail or on a computer CD or flash drive. Please contact the editor regarding optimum file sizes and formats.

By submitting material to Key, Lock & Lantern, the contributor grants permission for use in any edition of the KL&L magazine, digital newsletter, websites, and other publications. All material will be retained by KL&L for future use, unless the contributor specifically requests that it be returned, and includes a suitable, self-addressed, stamped envelope. Current deadlines are listed in the Key, Lock & Lantern Advertising Guide, which is available on the KL&L website at [www.klnl.org](http://www.klnl.org), or by contacting the editor.

## From the President's Desk.....

Another Key Lock & Lantern Convention has come and gone, with this year's event breaking records for attendance, at over 100 members and guests registered in advance and a total of 150 people coming through the doors for the Saturday show. While the KL&L Convention is not a public train show, and we have tried to preserve the intimate atmosphere of the old KL&L events of the 1970's, it is certainly nice to see a growing interest among collectors and historians.

A bigger convention means more extensive options for train rides and activities, additional exhibits to view, more stuff to buy, and more people to sell our stuff to. More important, it offers more opportunities to meet fellow history buffs and collectors, and to share ideas, research, and new finds.

I always enjoyed attending the KL&L Convention in Albany, where you had plenty of time to shoot the bull with other members, and have a leisurely show where everyone brought something interesting to look at, and some goodies to sell or trade. As the convention gradually increases in size, we intend to keep those aspects that still make KL&L a unique event for new and experienced collectors alike.

While the heart of the convention has remained the same with the growth of the event over the last ten years or so, there is one major difference. In the early days of the convention, it was considered a "hardware only" meet, for collectors of keys, locks and lanterns. Even as KL&L as an organization expanded, the convention remained focused on that specialized area of collecting.

Today, of course, we have participants who collect all types of lanterns, some who only collect timetables, some who collect everything from a specific railroad, and others who are interested more in historical research than actual collecting. Many of us are unfortunate souls who dabble in a little bit of everything, and find ourselves highlighting most of the lots in any given auction catalog. The one thing that we all have in common is a passion for the preservation of artifacts that are part of the history of transportation and industry.

It has been a pleasure to meet new people at the convention and learn about their specific areas of interest in the hobby. In most cases, it has opened a door for me to explore those aspects of transportation history and collecting myself. I'm already looking forward to next year!

With the success of recent conventions in Carbondale, the KL&L Board of Trustees has voted to return to the same venue for the 2025 convention, over the same weekend of May 8th through 11th. Mark your calendars now, and start spreading the word among the members of other railroad related groups that you belong to. Let's make next year's event even better than this year!

For those who are watching their mailboxes for the next magazine, it is currently in production, and it won't be long before it goes to press. As always, thanks for everyone's ongoing support of KL&L!

*Dave Hamilton*

KL&L President & Editor

## Railroad Event Calendar



**Upcoming historical society conventions, special events, railroadiana shows & auctions. Listings subject to change. Check show web sites before traveling and visit [www.klnl.org](http://www.klnl.org) for updates. See submission guidelines at the end of the calendar.**

**Look for Advertisements in this Issue & on the Key Lock & Lantern Website for [Events Shown in Blue](http://www.klnl.org)**

- Aug 22-23** **Lafayette, IN** - Railroadiana Consignment Auction. Rail & Road Auctions.  
Info: <https://rarauctions.com>
- Aug 24** **Atlanta, GA** - Atlanta Railroadiana Show.  
Golden Spike Enterprises.  
Info: [www.gserr.com](http://www.gserr.com).
- Aug 24** **Painesville, OH** - Painesville Depot Railroad Memorabilia Show.  
<http://painesvillerrailroadmuseum.org>.
- Aug 26-31** **Harrisburg, PA** - National Railway Historical Society Annual Convention.  
Info: [www.nrhs.com](http://www.nrhs.com).
- Sep 7-8** **St. Albans, VT** - Central Vermont Railway Historical Society Convention Info: [www.cvrhs.com](http://www.cvrhs.com).
- Sep 9-13** **St. Paul, MN** - Spokane Portland & Seattle RR Historical Society Convention.  
Info: [www.spsrhs.org](http://www.spsrhs.org).
- Sep 14** **Bradford, OH** - Railroad Heritage Day.  
Bradford Railroad Museum.  
Info: [www.bradfordrrmuseum.org](http://www.bradfordrrmuseum.org).
- Sep 14-15** **Colfax, CA** - Colfax California Railroad Days Festival  
Info: <https://colfaxrailroaddays.com>.

*Continued on Page 23*

Front Cover: Railroad historians and collectors enjoy a large selection of railroadiana at the 2024 KL&L Convention in Carbondale, PA.

# Brookline Auction Gallery Continues the Sale of Several Prominent Collections

Several large collections continue to make up the core of the catalog in the recent Brookline railroadiana auctions, with a variety of memorabilia from New York and New England highlighting the sales. More lots from these collections are lined up for future auctions, along with many individual consignments. *Photos and prices realized courtesy of Brookline Auction Gallery and do not include buyers premiums and shipping.*



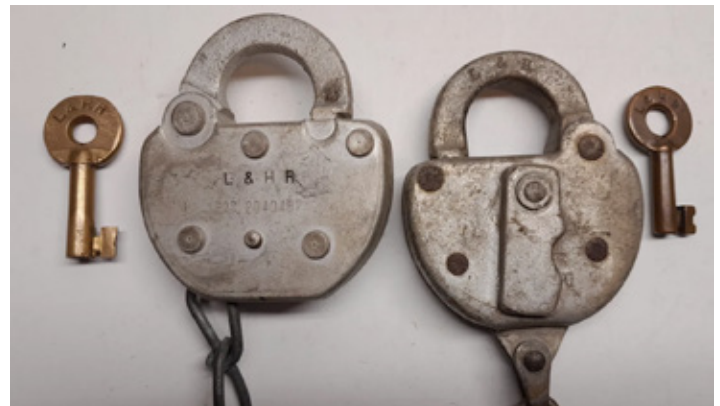
A high bid of \$475 was needed to buy this Rochester & Pittsburgh Railroad brass baggage tag by Hoole.



A New York Lake Erie & Western brasstop by Railroad Signal with green cast NYLE&W globe sold for \$1800



One of several scarce Silver Lake Railway passes in the auction, this one from 1890 sold for a \$150 bid.



A bid of \$750 took home this pair of Lehigh & Hudson River steel Adlake locks with L&HR marked keys.

**KEY LOCK & LANTERN**  
**Ads Reach Serious Collectors**  
**Contact KL&L at [transportsim@aol.com](mailto:transportsim@aol.com)**

*Continued on Page 18*

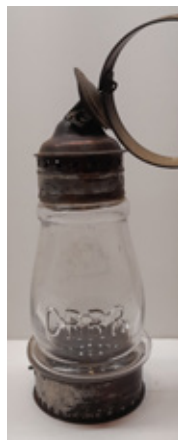
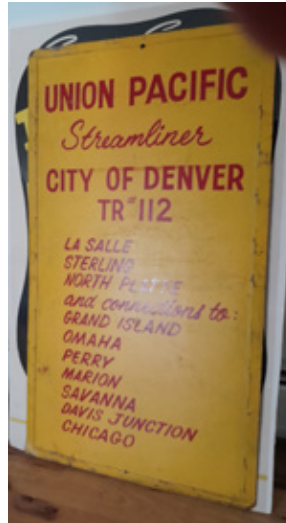
# Railroadiana Auctions - Spring & Fall - Brookline, NH

Railroadiana Consignment Auctions Held Each Spring & Fall  
Brookline Auction Gallery LLC - 32 Proctor Hill Rd, Brookline, NH 03033

[www.brooklineauctiongallery.com](http://www.brooklineauctiongallery.com)

Scott Czaja - Sales Manager

**Next Sale: September 20-21, 2024**  
**Featuring Consignments & Several Prominent Collections**



Now on [LiveAuctioneers.com](http://LiveAuctioneers.com) - We also accept absentee bids via: e-mail & mail  
Quality consignments are welcome for future sales - email Scott: [sczaja@hotmail.com](mailto:sczaja@hotmail.com)

# Railroad Memories Offers a Selection of Rare Memorabilia in Spring Auction

Railroad Memories has a reputation for offering some of the best examples of railroad memorabilia that is available to collectors, and its recent sales have not disappointed. With the usual selection of railroadiana from western roads being supplemented with artifacts from east of the Mississippi, bidders added some rare pieces to their collections. *Photos and prices realized courtesy of Railroad Memories Auctions and do not include buyers premiums and shipping.*



*A \$675 high bid took home this scarce 6" tin "Along the Frisco" St. Louis - Texas Line tip tray.*



*A cast iron & stainless steel 24" Rock Island locomotive nose herald went to a new owner for a \$2700 bid.*



*A Wisconsin Central lantern by CT Ham with blue cast WCRR globe sold for a high bid of \$1300.*



*A high bid of \$400 was needed to buy this Santa Fe logo coffee cup and matching saucer by Lamberton.*

*Continued on Page 19*



# RAILROAD MEMORIES RAILROADIANA AUCTIONS

## Recent Auction Highlights



Southern Pacific Adams & Westlake with  
Amber Cast SPRR Globe: \$14,250



Union Pacific Denver & Gulf  
Railway by Union Lock &  
Hardware: \$11,750



Northern Pacific by SG&L with Green  
Cast NPRRGlobe: \$5,000



Union Pacific Denver & Gulf  
Railway Switch Key: \$8,750



Great Northern Railway Porcelain  
24" Logo Sign: \$1,350



SP&S / OERY / GNPY Dater Die from  
Portland, Oregon: \$1,000



AT&SF & Colorado Midland 1894  
Joint Annual Pass: \$1,900



CM&STP RY Cooke Works  
Builders Plate: \$2,300



Chicago & Northwestern "Lunch Room"  
Bowl by Shenango: \$975

# Several Large Collections are Sold in Spring JM Hobby Railroadiana Auction

JM Hobby Supply & Railroad Artifacts offered a variety of memorabilia in its June auction, with collectors of everything from lanterns to timetables finding something of interest. Several large collections from both the midwest and east coast, along with individual consignments, have provided over 1000 lots in each of the recent sales. Artifacts from these collections, along with several additions, will fill out two more days of bidding in the October sale. *Photos and prices realized courtesy of JM Hobby Supply & Railroad Artifacts and do not include buyers premiums and shipping.*



*A Delaware Lackawanna & Western Adams lantern with green cast DL&W RR globe sold for a \$2400 bid.*



*An \$850 bid was needed to buy this cast bronze passenger car logo with the Monon Hoosier Line logo.*



*A \$600 bid purchased this Duluth Virginia & Rainy Lake Railway lock by Slaymaker with unmarked key.*



*A Railroad Crossing crossbuck sign with original cats eye marbles intact sold for a high bid of \$150.*

*Continued on Page 20*



# JM HOBBY SUPPLY & RAILROAD ARTIFACTS in Conjunction with IHANDER AUCTIONEERING

## FALL RAILROAD ARTIFACT AUCTION

Over 1000 lots to be sold from several large estates, with more to follow in our February 2025 sale!  
Saturday and Sunday, October 12-13, 2024 - Starting at 9AM CST Both Days!



\*Lots of rare railroad paper in this sale, including items from as far back as the 1830s! Timetables (horse blanket, employee and public); brochures, complete calendars, annual reports, and much more!\*Runs of employee timetables for the UP, BN, CBQ, and more!\*A huge railroad photo collection!\*A Milwaukee Road Hiawatha Metal Logo!\*Many tubular lanterns!

\*Rare Pennsylvania Railroad cast iron signs!\*Railroad lanterns-switchman, switch, marker, and semaphore!

\*Rare RR milk cans, spittoons, broadside ads, books, and more!

### WHY BUY AND SELL WITH US?

\*We have the lowest seller's fees of any railroad auction service, and even greater seller discounts for large consignments and high dollar items! This puts more money in the seller's pocket!

\*We have the lowest buyer's premium of any railroad auction service. Save money on your purchases and let your hobby dollars get you more!

\*We are the only firm to offer shipping at ACTUAL COST! We do not inflate shipping costs & itemize your shipping expenses for you, so you know the costs for postage, insurance, and packing supplies.

All shipping is done IN HOUSE!

Call us today at 920-857-9670 to discuss consigning your collection! Now accepting consignments for our 2025 sales!

Email: [jmhobbysupplyandrrartifacts@gmail.com](mailto:jmhobbysupplyandrrartifacts@gmail.com)

Address: PO Box 25, Luxemburg, WI 54217

Send us an email to join our email list and get an announcement for every upcoming sale!

Go to [www.liveauctioneers.com](http://www.liveauctioneers.com) and enter JM HOBBY SUPPLY AND RAILROAD ARTIFACT AUCTIONS to view the October sale or get a link from our website at [www.jmhobbysupply.com](http://www.jmhobbysupply.com)

# Rail & Road Continues Monthly Auction Schedule With Multiple Collections

Rail & Road Auctions has kept a full schedule for 2024, with collections of railroadiana, books, and slides being offered in at least one (and often two) auctions each month. Serious collectors have put in some high bids on scarce artifacts, but there have also been some opportunities for new collectors on lots of mid-range memorabilia. More collections are lined up for the summer and fall sales. *Photos and prices realized courtesy of Rail & Road Auctions and do not include buyers premiums and shipping.*



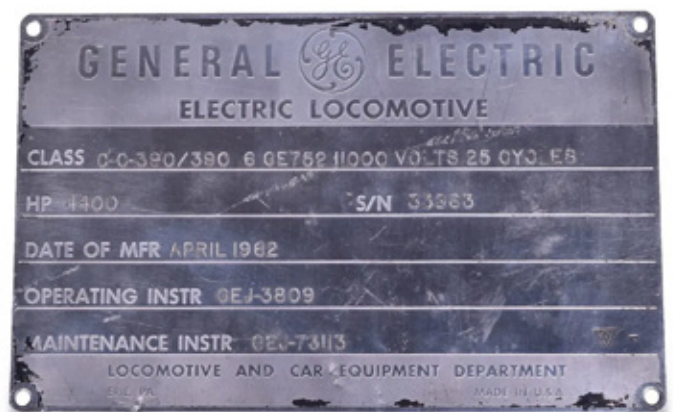
A \$475 bid took home this Long Island Rail Road "Patrol" police badge with N. Stafford hallmark on the reverse.



An Akron Canton & Youngstown classification lamp by Adlake went to a new owner for a \$400 bid.



A 22" aluminum nose plate from a New York New Haven & Hartford EP-4 electric locomotive sold for a \$5100 bid.



A \$450 bid purchased this Pennsylvania Railroad builders plate from General Electric E-44 locomotive 4436.

Continued on Page 21

# RAIL & ROAD AUCTIONS

Two Day Railroadiana Auction  
August 22 & 23, 2024

Next Sales: September 20th Aviation, Auto & Nautical  
October 18th Sound It & Sell It - Steam Whistles



Rail & Road Auctions presents our June Railroadiana & Transportation Auctions. Both days feature a quality selection of Railroadiana & Transportation Memorabilia & Collectibles.

View the catalogs on our website & register to bid.  
Rail & Road offers online, absentee, and telephone bidding.



**RAIL & ROAD AUCTIONS**

**WWW.BIDRAR.COM**

**765-412-7926**



# Historians & Collectors Visit Anthracite Country for the 2024 KL&L Convention



Railroad historians and collectors gathered in anthracite country from May 9th through 12th, for the 52nd annual Key Lock & Lantern Convention. This year's event featured a chartered excursion train on the Reading & Northern Railroad, presentations, a banquet dinner, and dozens of tables of memorabilia on display and for sale. Convention headquarters was once again at the historic Hotel Anthracite in downtown Carbondale, PA.

This year's event saw near record attendance, with over 100 members registered for the weekend activities in advance, and a total of over 150 collectors and history buffs attending the show on Saturday. With so many museums, tourist lines, and historic sites in the area, many attendees have made the annual trip to the KL&L Convention part of a longer stay in the region.

Thursday evening saw the usual early trading and socializing in the hotel lounge. Despite the somewhat dreary weather, a few members ventured out to do some railfanning around the area. There was plenty of time to visit with old friends and make some new ones, and a fair amount of railroadiana changed hands in the parking garage.



On Friday, a chartered KL&L excursion train on the nearby Reading & Northern Railroad carried passengers from the Pittston station to the resort town of Jim Thorpe, PA. Despite the rainy weather, an enjoyable time was had by all who took the trip over former CNJ and Lehigh Valley trackage. The local restaurants across from the historic station offered many options for lunch during the layover, and passengers were treated to some bonus mileage on the railroad's new trestle north of town.



*The KL&L excursion train prepares to depart from Pittston for the trip to Jim Thorpe, PA. Photo by Mike Beverly.*

*Continued on Page 13*

# 2024 KL&L Convention

Continued from Page 12

The Key Lock & Lantern board meeting was held on Friday evening, while members continued “room hopping” and trading memorabilia in the hotel lounge. There were plenty of discussions about railroad history and collecting into the early hours, while those who were presenting displays or setting up sales tables the next day made final preparations.



On Saturday morning, the Hotel Anthracite banquet room was transformed into an exhibit hall, with over sixty tables of displays and memorabilia for sale or trade. The KL&L show is unique in that many members set up themed exhibits of artifacts from the collection, in addition to railroadiana that is offered for sale. This year’s “Best in Show” award went to the father/son team of Mike and Michael Decker, for their display of memorabilia from the Delaware & Hudson Railroad. Other displays featured lanterns, timetables, and something new this year - uniform buttons.



The “main event” of the convention is the Saturday show with exhibits & sales. Photo courtesy of Jeremy Tuke.



Of course, there was the usual selection of top shelf material to buy, and plenty of reasonably priced railroadiana for the beginning collector. Following lunch, and the KL&L annual membership meeting, the fundraiser auction was held, with donated railroadiana sold with all proceeds to benefit the activities of the organization. The money raised at this event allows for the convention fees to be kept at reasonable levels and not require funds from the treasury to break even. This year, several higher end items were contributed to the sale, and the auction was a resounding success.



The fundraiser auction included plenty of memorabilia and some higher end items. Photo courtesy of Jeremy Tuke.

After a short break to allow exhibitors to take down their displays, a pre-dinner cocktail hour was held, with movies of the Ontario & Western and other local lines shown by Walt Kierzkowski of the O&W Historical Society. Following the buffet dinner, additional programs were presented, including a review of Green Bay Alco locomotives by John DeBeck, the Lackawanna Railroad by David MonteVerde, and slides by noted photographer Devan Lawton. After the conclusion of the programs, a small group gathered in the Canary Lounge until the early morning hours.

Continued on Page 14

# 2024 KL&L Convention

Continued from Page 13

The convention schedule for Sunday was left open to allow for visits to local museums or railfanning, and the sun finally came out for those activities. Most convention attendees met for an informal breakfast at the Hotel Anthracite before they headed out for the day, and a few last minute railroadiana trades took place.

With attendance growing every year at this location, the board has decided to return to Carbondale for the 2025 Key Lock & Lantern Convention, which will be held from May 8th through 11th, 2025 at the Hotel Anthracite. A good time was had by all at this year's convention, and KL&L is looking forward to another great event next year.



The KL&L excursion train arrives back in Pittston after the trip to Jim Thorpe, PA. Photo by Mike Beverly.



Sarah Hamilton shows her button display to Joey Senese, Jr., who seems to have noticed one from the O&W.



Michael Decker with his Delaware & Hudson Railroad exhibit that won the 2024 "Best in Show" award.



Continued on Page 15



# Schoharie Valley Railroad Museum to Host 2024 Annual Model Train Show & Sale

The Schoharie Valley Railroad Museum will be holding its annual Train Show on Saturday, September 21, 2024, on the grounds of the museum in Schoharie, NY. Vendors will fill the old Mill Building with model trains, supplies, books, and memorabilia, along with displays from local historical groups. Previous year's exhibitors included several collectors of railroadiana, and there were also some deals to be found on original railroad artifacts mixed in with the model trains.



*A vendor of railroadiana at the 2022 Schoharie Valley Railroad Museum Train Show. Photo by Dave Hamilton.*

The show will be held from 10am to 4pm, with an admission fee of \$6 for adults and free for kids. The museum complex is located at 143 Depot Lane in Schoharie, off Route 30, and an easy drive from Interstate 88 between Albany and Oneonta. All proceeds from the event will help support the activities of the museum.

The Schoharie Valley Railroad Museum is part of a group of local museums and historic sites operated by the Schoharie Colonial Heritage Association. The museum will be open to visitors during the show, with buildings including



*The museum's lumber mill building is filled with vendors for the annual train show. Photo by Dave Hamilton.*



*The Schoharie Valley Railroad Museum includes several buildings and rolling stock. Photo by Dave Hamilton.*

the original station house and freight house/engine house used by the Schoharie Valley and Middleburgh & Schoharie Railroads. Other structures preserved on the grounds include the Borden's Creamery and John Fain Co. coal weigh station and office building.

The museum collection also includes an 1891 combine car used in passenger service on the Middleburgh & Schoharie Railroad, a 1917 Delaware & Hudson Railroad wooden caboose, and several freight cars. A variety of memorabilia related to local railroads and industries is on display in the museum, along with a model train layout.

Nearby museums include the affiliated 1743 Palatine House and the Schoharie County Historical Society's Old Stone Fort Museum. For information about the railroad museum and show, visit [www.schoharieheritage.org](http://www.schoharieheritage.org).



*Museum buildings contain exhibits of local railroad and industrial history. Photo by Dave Hamilton.*



# Southern California Railway Museum to Hold Annual Fall Railroadiana Swap Meet

The Southern California Railway Museum (formerly the Orange Empire Railway Museum) will hold its annual Fall Railroadiana Swap Meet on Saturday, September 14, 2024, on the grounds of the museum in Perris, CA. Billed as the largest outdoor railroadiana swap meet in California, dozens of vendors will be selling a variety of antiques and railroad memorabilia.

In addition to authentic railroad artifacts, there will be all types of collectibles, art, books, models, and toy trains for sale. Railroad historians and preservationists will be on hand to tell the story of Southern California's railway history. This event will be not only be of interest to railroad collectors, but fun for the entire family.



The show is included with general admission to the museum, which is \$10 for adults and \$7 for children, or \$13 for adults and \$9 for children for admission and tickets for the train and trolley rides. The event runs from 9am to 2pm, and additional information is available on the museum's web site at <https://socalrailway.org>. *News & photos courtesy of the Southern California Railway Museum.*



**Railroad Museums & Historical Societies**  
Send in news & photos to  
**KEY LOCK & LANTERN**  
E-mail: [transportsim@aol.com](mailto:transportsim@aol.com)



A \$2500 bid sent this Star Union Line fast freight brass lock and working key home with a new owner.



A Kelly presentation lantern with green over clear engraved "Trump" globe went to a new home for an \$1150 bid.



A Canadian locomotive horn by Holden Company, Ltd. of Vancouver sold for a high bid of \$700.



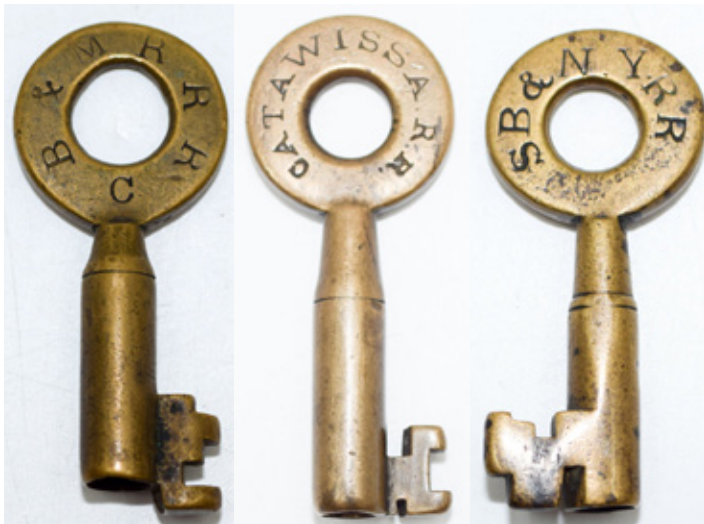
A \$325 bid was needed to purchase this rare 1882 Rochester & Pittsburgh Railroad public timetable.



A Portland & Troutdale Electric Railway cap badge by Irwin Hodson Co. sold for a high bid of \$525.



A Denver & Rio Grande Western smoke stand with "Rio Grande" plaque on the cast iron base sold for \$1500.



Switch keys from the Burlington & Missouri River (\$2700), Catawissa RR by Thomson (\$1750) and Syracuse Binghamton & New York RR by HC Jones (\$1800).



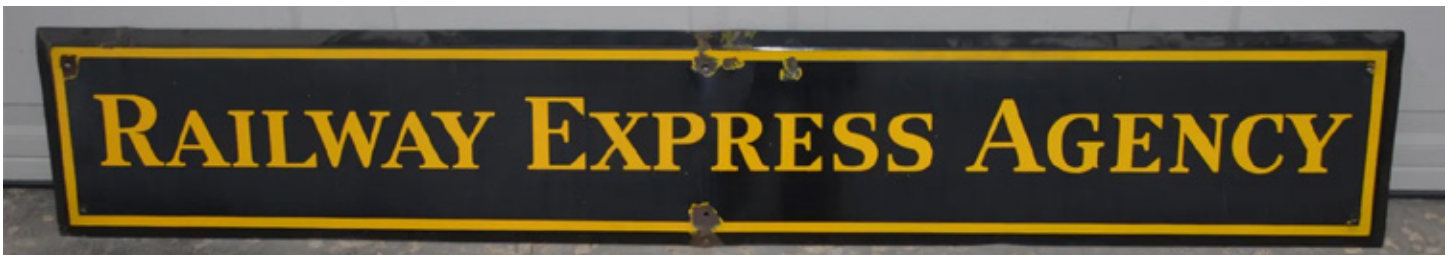
A \$2700 bid purchased this 23" aluminum embossed Santa Fe Kachina plaque from a lounge car.



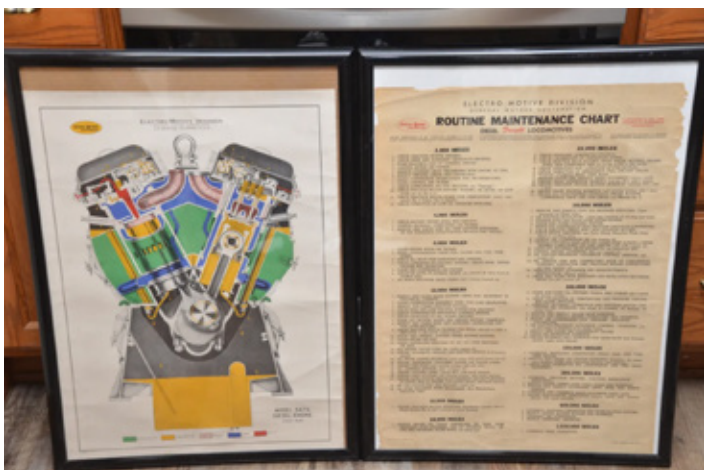
A \$4000 bid took home this Silverton Railroad 1888 buckskin pass issued to C.H. Abbott.



Cedar Rapids & Iowa City RR Adlake Reliable with clear etched globe (\$800), Burlington Route Adams with green etched Burlington Route globe (\$475), Chicago Lake Shore & South Bend Railway Adlake Reliable with red globe (\$425).



A nice porcelain Railway Express Agency sign went to a new home for a high bid of \$750.



A pair of framed General Motors Electro Motive Division maintenance guides from 1944 sold for \$325.



A \$300 bid was needed to buy this Milwaukee Road Hiawatha - First of the Speedliners book of diagrams.



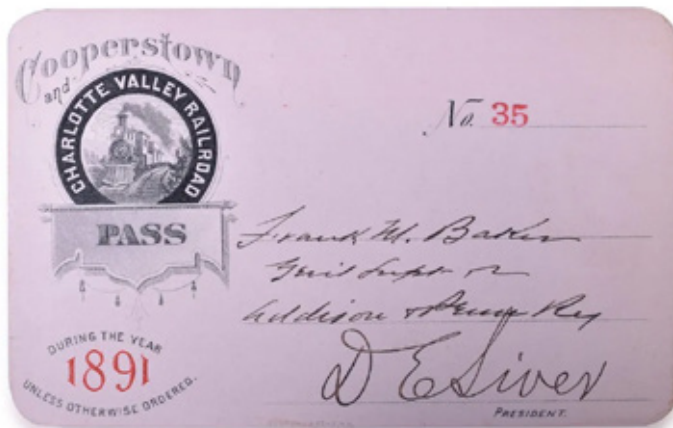
An original cast iron Monon Railroad alligator match safe went to a new collection with a high bid of \$250.



A \$275 bid was needed to purchase this Chicago South Shore & South Bend Railroad deck of playing cards.



A Western Railroad Supply wig wag crossing signal became a project for a new owner for \$2400.



An 1891 annual pass from the Cooperstown & Charlotte Valley Railroad went to a new home for a \$170 bid.



A \$1000 bid purchased this original framed advertising lithograph of a Cape Cod Central locomotive.

# CLASSIFIED ADS

Classified ad listings are free for Key Lock & Lantern members. Ad size must fit in four lines, and must include a name and contact email address (the word "at" may be substituted for "@" in the email address, if desired) or website address. A maximum of two ads per person may be run at the same time. Send ads to Dave Hamilton at [transportsim@aol.com](mailto:transportsim@aol.com).

## Auctions

**Brookline Auction Gallery.** Brookline, NH. Railroadiana consignment & estate auctions. Contact sales manager Scott Czaja at [sczaja@hotmail.com](mailto:sczaja@hotmail.com) or visit [www.tagtown.net](http://www.tagtown.net).

**JM Hobby Supply & Railroad Artifacts.** Luxemburg, WI. Railroadiana consignment & estate auctions. Contact John DeBeck at [jmhobbysupplyandrrartifacts@gmail.com](mailto:jmhobbysupplyandrrartifacts@gmail.com) or visit [www.jmhobbysupply.com](http://www.jmhobbysupply.com).

**Railroad Memories.** Georgetown, CO. Online consignment & estate auctions. Contact Sue Knous at [railroadmemories@gmail.com](mailto:railroadmemories@gmail.com) or visit [www.railroadmemories.com](http://www.railroadmemories.com).

**Rail & Road Auctions.** Lafayette, IN. Online railroadiana auctions. Contact Derek Thomas at [info@RARauctions.com](mailto:info@RARauctions.com) or visit <https://rarauctions.com>.

## Locks & Keys

**Wanted: Switch Key** from the Baltimore Transit Company (B T Co.) Will pay a good price for a key in decent condition. Dan Allen: [NJSRR\(at\)aol.com](mailto:NJSRR(at)aol.com).

**Wanted: Locks** - fancy cast back railroad switch locks. Warren Nyerges: [warrennyergesjr@hotmail.com](mailto:warrennyergesjr@hotmail.com) or visit [www.antiquerailroadlock.com](http://www.antiquerailroadlock.com).

## Locomotive & Rolling Stock Hardware

**Builder's Plates for Sale.** Original steam, diesel & electric builder's & number plates. Contact us for a current list of plates. Ron Muldowney: [rjmuldowney@comcast.net](mailto:rjmuldowney@comcast.net).

## Railroadiana Dealers

**Times Treasures** Railroad & Country Collectibles on Ruby Lane. All types of railroadiana, with new items added on a regular basis. <http://www.rubylane.com/shop/timestreasures>

## Trolleys & Transit

**Wanted: Photos of Syracuse, NY** trolley car #1024 & trolley cars around Syracuse University & Archbold Stadium. Dave Hamilton: [transportsim@aol.com](mailto:transportsim@aol.com).

## The Bi-Monthly Digital

## KEY LOCK & LANTERN NEWS

Sent by Email Link to 520+ Subscribers

Visible to 200+ Daily Website Visitors

Appears in Internet Searches

Submit your ad to: [transportsim@aol.com](mailto:transportsim@aol.com)

*Want Ads Are Back!*

*Free for KL&L  
Members!*

*Read Submission  
Guidelines & Send to  
the Editor!*

- Sep 14 **Essex, CT** - New Haven Railroad Historical & Tech Association Reunion.  
Info: [www.nhrhta.org](http://www.nhrhta.org).
- Sep 14 **Perris, CA** - Southern California Railway Museum Fall Swap Meet..  
Info: <https://socalrailway.org>.
- Sep 19-21 **Marion, OH** - Penn Central Railroad Historical Society Convention  
Info: [www.pcrrhs.org](http://www.pcrrhs.org).
- Sep 20-21 **Brookline, NH** - Railroadiana Consignment Auction. Brookline Auction Gallery.  
Info: [www.brooklineauctiongallery.com](http://www.brooklineauctiongallery.com).
- Sep 21 **Schoharie, NY** - Schoharie Railroad Museum Train Show  
Info: <https://www.schoharieheritage.org>.
- Sep 27-29 **Mexico, MO** - Wabash Railroad Historical Society Annual Meeting  
Info: [www.wabashrhs.org](http://www.wabashrhs.org).
- Oct 3-6 **St. Louis, MO** - Baltimore & Ohio Railroad Historical Society Convention.  
Info: [www.borhs.org](http://www.borhs.org).
- Oct 4-6 **San Luis Obispo, CA** - Central Coast Railroad Festival - San Luis Obispo RR Museum.  
Info: [www.slormm.com](http://www.slormm.com).
- Oct 5-6 **Coplay, PA** - Erie Lackawanna Historical Society Symposium.  
Info: [www.erialackhs.org](http://www.erialackhs.org).
- Oct 5 **DeLand, FL** - Florida Rail Fair. Golden Spike Enterprises.  
Info: [www.gserr.com](http://www.gserr.com).
- Oct 6 **Easton, PA** - Lehigh Valley Chapter NRHS Train Show  
Info: [www.lehighlines.org](http://www.lehighlines.org).
- Oct 10-13 **Pueblo, CO** - Missouri Pacific Historical Society Convention.  
Info: <http://mopac.org>.
- Oct 12-13 **Luxemburg, WI** - JM Hobby Supply & Railroad Artifacts Railroadiana Auction.  
Info: <http://www.jmhobbysupply.com>.
- Oct 12 **Terryville, CT** - Lock Museum of America Annual Lock Show.  
Info: [www.lockmuseumofamerica.org](http://www.lockmuseumofamerica.org).
- Oct 13 **Batavia, NY** - Fall GSME Great Batavia Train Show.  
Info: [www.gsme.org](http://www.gsme.org).
- Oct 13 **Spokane, WA** - Spokane Train Show - River City Modelers.  
Info: [www.rivercitymodelers.org](http://www.rivercitymodelers.org).

## Send listings to: [transportsim@aol.com](mailto:transportsim@aol.com)

There is no charge for calendar listings. Train shows must include dealers of authentic railroad memorabilia or related material, and auctions must include at least 20 lots of railroadiana. Other events must be directly related to railroad history (special exhibitions, lecture programs, conventions, limited excursions, etc.). Regular monthly group meetings, model train meets & scheduled tourist train trips are not eligible, unless related to a special event. Events are listed space permitting, at the editor's discretion. Listings are subject to error or change. Always check show web sites before traveling.

Visit [www.klnl.org](http://www.klnl.org) for More Listings

# Key Lock & Lantern News & Information

## Key Lock & Lantern Email List

If you are not already receiving the link to this newsletter directly from KL&L, go to the "Contact KL&L" page on the Key Lock & Lantern website at [www.klnl.org](http://www.klnl.org) and sign up for our email list. You will receive links to the *KL&L News* when it is published and occasional notifications of events of interest to members. The email list is hosted by MailChimp, which makes it easy to unsubscribe at any time, and KL&L never sells or shares its email list with outside parties. Don't miss important news and announcements - sign up today!

## KL&L Facebook Page

For current news and announcements, visit the Key Lock & Lantern page on Facebook at <https://www.facebook.com/railroadiana>. Up to date information about the Key Lock & Lantern Convention, newsletter & magazine publication, and upcoming shows and auctions is posted on the page. There are also hundreds of photos of modern & historical railroad operations, railroad & transportation memorabilia, and views of recent shows and events. Be sure to "follow" the page, so that posts show up in your news feed.

## KL&L YouTube Channel

The Key Lock & Lantern YouTube channel showcases videos of modern and historical railroad operations, steam train excursions, and KL&L Convention highlights. Visit the channel at <https://www.youtube.com/user/KeyLockLantern>. Be sure to hit the subscribe button and leave comments on the videos that you enjoyed!

## Want Ads for KL&L Members

As noted in previous issues, the "Want Ad" section of the *KL&L News* is undergoing an update to remove outdated notices. If you would like to submit an ad for inclusion in future issues, contact KL&L editor Dave Hamilton at [transportsim@aol.com](mailto:transportsim@aol.com). Basic want ads are free for current Key Lock & Lantern members.

## Member Address Changes & Corrections

The *Key Lock & Lantern* magazine is sent via First Class Mail and is therefore forwarded by the U.S. Postal Service for the designated period following an address change. However, due to the frequency of publication of the magazine, the time for forwarding may expire in between issues, and your magazine may be returned to KL&L. Please make sure that Key Lock & Lantern is on your list of organizations to notify in the event of a change of address. Also, please check your mailing label when receiving your copy of the magazine, and advise KL&L if any corrections are needed. Contact Marie Brainard at [j944wb@aol.com](mailto:j944wb@aol.com) if changes are required.



For News & Information, Visit the KL&L Page on Facebook. Use the link at [www.klnl.org](http://www.klnl.org).

# KEY LOCK & LANTERN

Can Help Promote Your  
**Auction, Show or Event**

With Advertising in KL&L Publications

**2700+ Facebook Followers**

**200+ Daily Website Visits**

**520+ Newsletter Subscribers**

Contact KL&L Editor Dave Hamilton at  
[transportsim@aol.com](mailto:transportsim@aol.com)



**All submissions for the KL&L magazine,  
news items for the digital KL&L News  
& general inquiries should be sent to:**

KL&L President & Editor  
David Hamilton  
E-mail: [transportsim@aol.com](mailto:transportsim@aol.com)

**Send membership applications, dues  
payments, and address changes to:**

KL&L Chairman John Brainard &  
VP-Membership Marie Brainard  
E-mail: [j944wb@aol.com](mailto:j944wb@aol.com)

Join or Renew Your  
**KEY LOCK & LANTERN**  
Membership Online at  
[www.klnl.org](http://www.klnl.org)

## KL&L Membership Form (2024 Membership Year)

Please make check or money order payable to Key, Lock & Lantern, Inc. and forward to:  
Marie Brainard, KL&L Membership, 35 Nordhoff Place, Englewood, NJ 07631-4810

Name \_\_\_\_\_

Representing (business or museum, if applicable) \_\_\_\_\_

Address \_\_\_\_\_

City \_\_\_\_\_ State/Prov \_\_\_\_\_ Zip/Mail Code \_\_\_\_\_

Phone \_\_\_\_\_ E-mail \_\_\_\_\_

Basic membership at \$40 per year (1st Class mailing in USA) or \$60 per year (non-USA).....\$ \_\_\_\_\_

Additional Donation.....\$ \_\_\_\_\_

Enclosed is my check / money order payable to Key Lock & Lantern, Inc. for.....\$ \_\_\_\_\_

Membership in KL&L includes 4 issues of the printed magazine, special member rates for KL&L Convention registration, and access to "members only" content on the KL&L website. New members joining before September will receive all previously published magazines for the year, and will be due for renewal in the following January. New members joining in September or later will have their dues applied to the next membership period, beginning with the Jan/Feb/Mar issue, unless otherwise requested.