



# KEY LOCK & LANTERN NEWS



Mar/Apr 2024

Issue No.79

*The Bi-Monthly Digital Supplement to Key Lock & Lantern Magazine*



**Railroad Museum &  
Preservation News**

**Spring Railroad  
Auction Reports**

**KL&L Convention  
Event Schedule**



# KEY LOCK & LANTERN NEWS



The Bi-Monthly Digital Supplement to Key Lock & Lantern Magazine  
WWW.KLNL.ORG

**March/April 2024** **Issue #79**

From the President's Desk .....	3
Railroad Event Calendar.....	3
KL&L Excursion on Reading & Northern RR.....	4
KL&L Railroadiana Show.....	5
JM Hobby Railroadiana Auction.....	8
Rail & Road Auction Report.....	10
2024 KL&L Convention Schedule.....	12
Carbondale Historical Museum.....	16
Stourbridge Line Excursion.....	17
Steamtown Trains Resume for Season.....	18
Electric City Trolley Museum.....	19
Classified Ads.....	22
KL&L News & Information.....	23
<b>KL&amp;L News Editor.....</b>	<b>David Hamilton</b>

The Key, Lock & Lantern News is published bi-monthly as a digital supplement to the quarterly Key, Lock & Lantern magazine. Recipients may repost or forward complete and unmodified copies of this newsletter to other hobbyists and websites, but its content may not otherwise be copied or distributed without the permission of the KL&L Board of Trustees. Copyrights are held by the respective authors and photographers. Excerpts of news items may be published with the credit line "Key, Lock & Lantern News"

Annual membership dues for Key, Lock & Lantern are \$40 for residents of the USA, and \$60 for outside of the USA (by money order or electronic payment in US funds). Members receive four issues of the quarterly KL&L magazine, delivered via first class mail. Memberships for additional family members are \$5 each (only one magazine is sent per family). Applications for membership & address changes should be forwarded to the VP-Membership at the e-mail address listed at right. Online membership forms and dues payment via Paypal are available at [www.klnl.org](http://www.klnl.org).

Contributions of articles, photos, and news may be forwarded to the editor at the e-mail address listed at right. Hard copy articles should be written on 8 1/2 x 11" paper, and typed or neatly printed. Photos should be sent with a caption card attached which includes the contributor's name, phone number, and description. Photocopies of advertising and supply catalogs are acceptable. The submission of material in digital format is preferred, with text files in DOC, TXT, or PDF format, and images in JPG, TIF, BMP or GIF format. Digital files may be sent by e-mail or on a computer CD or flash drive. Please contact the editor regarding optimum file sizes and formats.

By submitting material to Key, Lock & Lantern, the contributor grants permission for use in any edition of the KL&L magazine, digital newsletter, websites, and other publications. All material will be retained by KL&L for future use, unless the contributor specifically requests that it be returned, and includes a suitable, self-addressed, stamped envelope. Current deadlines are listed in the Key, Lock & Lantern Advertising Guide, which is available on the KL&L website at [www.klnl.org](http://www.klnl.org), or by contacting the editor.

## Key, Lock & Lantern

A non-profit membership corporation dedicated to the preservation of transportation history and railroad memorabilia

*The mission of Key, Lock & Lantern is to gather and publish information on the history of the transportation industry, and to support the preservation of railroad artifacts. KL&L members have an interest in all aspects of railroad & transportation history, from research and preservation projects to the conservation and restoration of all types of historical memorabilia. Originally formed in 1966, Key, Lock & Lantern, Inc. was officially incorporated in 1988 as a non-profit, educational, membership corporation in the State of New Jersey, under the provisions of Section 501(c)(3) of the United States Internal Revenue Code. Membership is open to anyone with an interest in transportation history and in achieving the goals of the organization.*

## Officers & Trustees

- Chairman of the Board**  
John Brainard  
[j944wb@aol.com](mailto:j944wb@aol.com)
- President & Editor**  
David Hamilton  
[transportsim@aol.com](mailto:transportsim@aol.com)
- VP- Membership / Treasurer**  
Marie Brainard  
[j944wb@aol.com](mailto:j944wb@aol.com)
- Secretary**  
Jeremy Tuke
- Chaplain / Sgt at Arms**  
Chip Greiner
- Historian**  
Peter Gores

- Trustees at Large**  
Lyman Gray, Sam Lombardi, Joel Shaw, Sam Ferrara, Leonard Gordy, Bob Lipman, Randy Bushart, William Sternitzke, Bill Roberts, Bob Myers, Joey Senese, Matthew Bushart, Michael Decker

[www.klnl.org](http://www.klnl.org)



For Current News  
"Like" KL&L on  


## From the President's Desk.....

As I write this message, this year's KL&L Convention is only one week away. We have a great train ride planned for Friday, with a charter trip on the Reading & Northern that is geared toward railfans instead of tourists, all 60 table spaces for the Saturday show are sold out, and we have a bunch of interesting presentations by members lined up for Saturday evening. The 2024 convention is shaping up to be another event that should not be missed!

For those who are primarily interested in adding something new to your collection, several members who do not usually sell at shows will be thinning their collections out, and will have multiple tables of memorabilia for sale that hasn't been out for many years. In addition, many of us have made purchases of large lots of both hardware and paper at recent estate auctions (I came home with over 60 lanterns from one of them), and are planning to sell the extras. There is going to be plenty of the so-called "fresh to the market" material at this year's show!

For those like myself who can't stuff much more into the spare room, there will be the usual museum-quality displays arranged by KL&L members to view. Although we all would like to build the ultimate collection, the truth is that we can't own everything, and it is nice that many of our fellow members are willing to share artifacts from their collections with the rest of us, through convention exhibits. There is always something scarce and interesting (and sometimes unique) to see at the convention.

In addition to the scheduled presentations at our Saturday dinner, several members will also be bringing slides to show. So, we will have a carousel projector available, for anyone who wants to bring some photos from the days of film. We will of course be able to show Powerpoint presentations, or any format of digital photos, as well.

And as always, there is plenty of time built into the schedule for simply getting together to talk with other members about history and collecting. I still remember the first convention that I attended, over twenty years ago, where we stayed up until two in the morning, just shooting the bull. Despite the fact that the convention has grown in recent years, that is one of the aspects of the "good old days" that has not gone away. If you are new to the convention, just walk up to the nearest conversation about trains in the hotel lounge, and join in - that is the kind of group that KL&L is.

Although tables are sold out, there are still a few seats on the train ride left (they must be reserved in advance, so don't wait), and registration for the show is available at the door. Regardless of what aspect of the hobby you are interested in (or like me, all of them), there is something for everyone at the KL&L Convention!

Thanks for everyone's ongoing support of Key Lock & Lantern, and the many kind comments that I received about the last magazine. Don't forget to spread the word about KL&L, on social media and in person at shows and meets!

*Dave Hamilton*

KL&L President & Editor

## Railroad Event Calendar



**Upcoming historical society conventions, special events, railroadiana shows & auctions. Listings subject to change. Check show web sites before traveling and visit [www.klnl.org](http://www.klnl.org) for updates. See submission guidelines at the end of the calendar.**

**Look for Advertisements in this Issue & on the Key Lock & Lantern Website for [Events Shown in Blue](http://www.klnl.org)**

- May 4-6** Bennington, VT - Rutland Railroad Historical Society Annual Convention.  
Info: <https://www.rutlandrailroad.org/>
- May 4** Grafton, OH - Baltimore & Ohio Railroad Historical Society Mini-Convention.  
Info: [www.borhs.org](http://www.borhs.org).
- May 8-12** Altoona, PA - Pennsylvania Railroad Tech & Historical Society Meeting.  
Info: [www.prrths.org](http://www.prrths.org).
- May 9-12** Carbondale, PA - Key, Lock & Lantern Convention. Transportation History Expo  
Info: [www.klnl.org](http://www.klnl.org).
- May 9-10** Lafayette, IN - Railroad & Transportation Auctions. Rail & Road Auctions.  
Info: <https://rarauctions.com>
- May 11** Elk Grove Village, IL - Chicago Railroad Memorabilia Show.  
Info: [www.graylandstation.com](http://www.graylandstation.com).
- May 11** Winslow, AZ - Santa Fe Historical Society Mini Meet.  
Info: [www.atsfrr.com](http://www.atsfrr.com).
- May 15-18** Pittsburgh, PA - Railway & Locomotive Historical Society Convention.  
Info: <http://www.rlhs.org>.

*Continued on Page 23*

Front Cover: Lehigh Valley power is serviced at Tifft Yard in Buffalo, NY on August 29, 1967.  
Photo by David Turkon / KL&L Archives.

# All Aboard for Jim Thorpe

## KL&L Charter Excursion to Run on LV & CNJ Trackage



Over the past few years, since the KL&L Convention has been held in the Scranton area, its train trips have been run over former DL&W, D&H, Erie, and interurban lines. This year, the Lehigh Valley and Central Railroad of New Jersey join the list of fallen flags that will be traversed by KL&L Convention excursions. On Friday, May 10th, a chartered KL&L train will depart from Pittston, PA for a trip over the Reading & Northern Railroad to Jim Thorpe, PA.

Prior to its acquisition by the regional carrier, this route was Conrail's Lehigh Line, made up of former Lehigh Valley and Jersey Central trackage, which had already been rationalized by the two carriers in the 1960's. When Conrail took over the properties of the LV and CNJ in 1976, through train

operations were drastically reduced, and this segment was identified as a candidate for sale in the mid-1990's. Since that time, the Reading & Northern Railroad has aggressively pursued new business and integrated the line into its growing network of branches that were spun off by Conrail.

In addition to freight service, the R&N has been expanding its passenger excursion business, with a variety of trains running out of the Reading, Port Clinton, and Jim Thorpe



Seats in Reading & Northern restored "Crown Class" coaches are still available on the KL&L trip.



The excursion train will travel over former LV and CNJ trackage through the Poconos and Lehigh Gorge.

stations. Last year, the railroad opened a new Wilkes-Barre/Scranton Regional Train Station in Pittston, and began to operate trains from there to Jim Thorpe. Marketed to tourists wishing to spend the day in Jim Thorpe, the public excursion trains offer a leisurely ride through the scenic Lehigh Gorge, and a five hour layover for shopping and sightseeing.

Continued on Page 14

# KL&L Show On Track to Fill Hotel Anthracite Gravity Hall with Exhibits & Sales Tables



On Saturday, May 11th, the 6000 square foot Gravity Hall banquet room at the Hotel Anthracite will once again be filled with museum-quality exhibits and over fifty tables of transportation memorabilia for sale. The Transportation History Exposition is the “main event” of the Key Lock & Lantern Convention, providing members with a venue to showcase interesting artifacts from their collections and the results of their research.

KL&L members competing for the “Best in Show” award have presented a variety of exhibits in recent years, with topics ranging from lantern manufacturers to local railroad history. Some of the displays at recent shows included: the Nail City Lantern Company, Delaware Lackawanna & Western Railroad memorabilia, early Amtrak timetables, passes from New York & Pennsylvania railroads of the 1850-

1890 period, railroad uniform badges, and an original CTC machine panel from the New York Central Railroad. The Erie Railroad, the Northern Central Railroad, the Delaware & Hudson Canal Company, the Chicago & Alton Railroad, Taylor Manufacturing Company, street & post lamps, railroad police badges, and lantern patent models have been featured in recent years.



*One of the unique aspects of the KL&L Convention is the museum-quality displays presented by members.*



*Collectors wander through dozens of tables filled with authentic transportation artifacts at the 2023 show.*

In addition to the displays, most exhibitors also offer authentic memorabilia for sale or trade. A collector will find every type of railroadiana at the show, from hardware to paper and everything in between. A nice selection of lanterns (including non-railroad models) is usually offered by several collectors, along with globes, founts, and other parts.

*Continued on Page 15*

# Railroadiana Auctions - Spring & Fall - Brookline, NH

Railroadiana Consignment Auctions Held Each Spring & Fall

Brookline Auction Gallery LLC - 32 Proctor Hill Rd, Brookline, NH 03033

Auction information including photos: [www.tagtown.net](http://www.tagtown.net)

Scott Czaja - Sales Manager

**Next Sale: September 20-21, 2024**  
**Featuring Consignments & Several Prominent Collections**

## Some Highlights of the Recent Sales



*Lehigh & Hudson River Lantern:  
Sold for \$4600*



*Northern Central Railway Lock:  
Sold for \$2100*



*Erie Lantern With Green Cast  
Globe: Sold for \$2000*



*Chateaugay Railroad Baggage  
Tag: Sold for \$425*



*Lackawanna Railroad High Voltage  
Catenary Sign: Sold for \$1000*



*Boston & Albany Police Badge:  
Sold for \$375*

Now on [LiveAuctioneers.com](http://LiveAuctioneers.com) - We also accept absentee bids via: e-mail & mail  
Quality consignments are welcome for future sales - email Scott: [sczaja@hotmail.com](mailto:sczaja@hotmail.com)

# Railroad Memories

AUCTION CATALOG #119 HIGHLIGHTS

Bids Begin Closing Sunday June 9, 2024 at 8pm MDT



SANTA FE POLICE BADGE



M&P DUCRY



CONCORD & MONTREAL  
BRASS TOP



B & M R R R  
CAR KEY



SANTA FE DEPOT CLOCK



NORTHERN CENTRAL  
FANCY BACK LOCK



PD&E RR



RARE OTTO MEARS  
BUCKSKIN PASS



BD&F RR CAR  
KEY



MINNEAPOLIS ST PAUL  
& SAULT ST. MARIE  
FANCY BACK LOCK



L&N BUILDER'S PLATE



SAGE GREEN SERVICE PLATE



DUBUQUE SERVICE PLATE



PRR BUILDER'S PLATE



SANTA FE KACHINA  
PLAQUE



SEABOARD LAST SPIKE TROPHY  
P.O. Box 415; Georgetown, CO 80444  
303-569-5185 fax 303-569-5186



CURECANTI TOAST COVER

Email: [railroadmemories@gmail.com](mailto:railroadmemories@gmail.com) website: [www.railroadmemories.com](http://www.railroadmemories.com)

# Railroadiana from Across the Country is Sold in Latest JM Hobby Auction

When JM Hobby Supply held its first auctions in Duluth, the lots primarily consisted of memorabilia from that region. Since then, consignors from across the country have been sending their railroadiana to the company's headquarters in Wisconsin, with online bidding opening the door to collectors nationwide. The June sale has plenty of unusual and scarce artifacts in the catalog, so it will certainly be worth watching. *Photos and prices realized courtesy of JM Hobby Supply & Railroad Artifacts and do not include buyers premiums and shipping.*



An \$800 bid took home this Adams & Westlake lantern with two color globe presented to a CB&Q conductor.



Something a little different: Glass number boards from Chicago Transit Authority cars sold for a \$350 bid.



A \$450 bid was needed to buy this Elgin Joliet & Eastern Railroad switch lamp made by Dressel.



A porcelain "To The Trains" sign in very good condition went to a new collector for a high bid of \$550.

Continued on Page 20



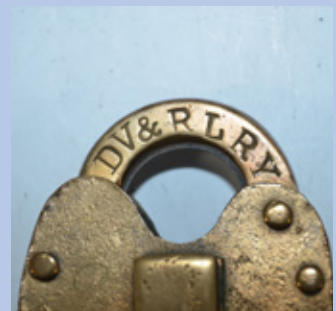
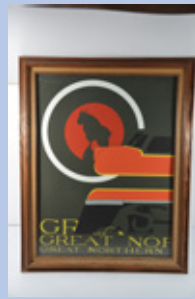
# JM HOBBY SUPPLY & RAILROAD ARTIFACTS

## NEXT RAILROAD ARTIFACT AUCTION - JUNE 29-30, 2024

Two Big Days! Saturday, June 29th (Live Broadcast Auction) and Sunday, June 30th (Timed Sale), Starting at 9AM Central Standard Time Both Days!

Over 900 lots to be sold from several large estates, with more to follow in our October sale!

\*Hundreds of rare railroad switchman, marker, class, and switch lamps/lanterns, including fine examples from the Erie, Delaware Lackawanna and Western, Florence and Cripple Creek, Cripple Creek and Colorado Springs, Colorado Springs and Cripple Creek District, Midland Terminal, Duluth Missabe and Iron Range, Santa Fe, Chicago Junction, Maine Central, Sandusky Norwalk and Mansfield, Indiana Harbor Belt, Chicago and Western Indiana Belt, and many more!



Many tubular lanterns. Passes and timetables, including many Colorado roads! Railroad crossing signs, herald signs, and other signs. Two estate collections of railroad china and silver. Railroad cans, station clocks, locks, keys, fire extinguishers, tools, bells, milk cans, posters, and crossing signals. Railroad lantern restoration parts, including founts, lenses, burners, gaskets and inner Pyrex chimneys. Plus, a huge estate of brass HO scale model trains!

### WHY BUY AND SELL WITH US?

- \*We have the lowest seller's fees of any railroad auction service, and even greater seller discounts for large consignments and high dollar items! This puts more money in the seller's pocket!
- \*We have the lowest buyer's premium of any railroad auction service. Save money on your purchases and let your hobby dollars get you more!
- \*We are the only firm to offer shipping at ACTUAL COST! We do not inflate shipping costs & itemize your shipping expenses for you, so you know the costs for postage, insurance, and packing supplies.

All shipping is done IN HOUSE!

Call us today at 920-857-9670 to discuss consigning your collection! We are now accepting consignments for our October 2024, as well as our 2025 and 2026 sales!

Email: [jmhobbysupplyandrrartifacts@gmail.com](mailto:jmhobbysupplyandrrartifacts@gmail.com)

Address: PO Box 25, Luxemburg, WI 54217

Send us an email to join our email list and get an announcement for every upcoming sale!

Go to [www.liveauctioneers.com](http://www.liveauctioneers.com) and enter JM HOBBY SUPPLY AND RAILROAD ARTIFACT AUCTIONS to view the June sale beginning May 15, 2024, or get a link from our website at [www.jmhobbysupply.com](http://www.jmhobbysupply.com)

# Rail & Road Continues Full Schedule of Auctions With Consignments & Collections

With plenty of collections going on the market, Rail & Road has been holding auctions almost monthly this year. Prices for higher end artifacts remain strong, with some reasonable buys for more common memorabilia. The May 9th railroadiana auction contains many interesting lots, with other transportation memorabilia lined up for May 10th. *Photos and prices realized courtesy of Rail & Road Auctions and do not include buyers premiums and shipping.*



*A \$170 high bid purchased this Instructograph Morse Code Telegraph Instruction Machine with extra training reels.*



*An A&W bellbottom from the Detroit Toledo & Ironton with clear etched globe sold for a high bid of \$225.*



*An 1862 Pittsburgh Ft. Wayne & Chicago RR and 1873 Pennsylvania State Auditor's maps sold for \$300.*



*A high bid of \$180 bought this Wabash Banner pattern flag logo cup and saucer made by Syracuse.*

*Continued on Page 21*

# RAIL & ROAD AUCTIONS

Railroadiana Auction - May 9th, 2024  
Automotive, Nautical & Aviation  
Auction - May 10th, 2024



Rail & Road Auctions presents our May Railroadiana & Transportation Auctions. Both days feature a quality selection of Railroadiana & Transportation Memorabilia & Collectibles.

View the catalogs on our website & register to bid.  
Rail & Road offers online, absentee, and telephone bidding.



**RAIL & ROAD AUCTIONS**  
**WWW.BIDRAR.COM**  
**765-412-7926**



# 2024 Key Lock & Lantern Convention Schedule



A variety of activities are planned for the 2024 Key Lock & Lantern Convention, with plenty of unscheduled time to allow for visiting with fellow history buffs & collectors, and for making those “parking lot deals” that the convention is known for. There are also many other attractions of interest in the area, along with modern railroad action for train chasers. The following schedule of events outlines the activities that

are planned. The schedule is subject to last minute change, if an unforeseen event occurs, so if your email and/or cell phone number has changed since you registered, please contact Marie by email at [j944wb@aol.com](mailto:j944wb@aol.com). Registration for the show is available at the door, but other events are closed and some are sold out, so please contact KL&L first if you want to register for train tickets or the dinner.

## Thursday, May 9

- |                |   |
|----------------|---|
| 9:00am-5:00pm  | Open schedule for those wishing to visit Steamtown, the Carbondale Historical Museum, Electric City Trolley Museum, and other local historic sites. |
| 5:00pm-8:00pm  | Dinner on your own (many KL&L members meet in the hotel restaurant).  |
| 8:00pm-11:00pm | Informal social hour at the Hotel Anthracite lounge & early memorabilia trading.  |

## Friday, May 10

- |                |  |
|----------------|--|
| 7:00am-10:00am | Continental breakfast for guests at the Hotel Anthracite.  |
| 9:30am         | Check-in & boarding for KL&L excursion train at the Pittston station boarding platform. KL&L volunteers will check in passengers and issue name badges.              |
| 10:00am        | KL&L excursion train on the Reading & Northern Railroad departs from Pittston for a round trip to Jim Thorpe. A two hour layover is planned in Jim Thorpe for lunch. |
| 2:30pm         | KL&L excursion train departs from Jim Thorpe.  |
| 5:30pm         | Approximate arrival time of KL&L excursion train back in Pittston.   |
| 5:00pm-7:00pm  | Dinner on your own (many KL&L members meet in the hotel restaurant).   |
| 6:00pm-7:00pm  | Key Lock & Lantern Board of Trustees Meeting (officers & board members).   |

## Friday, May 10 (continued)

- 7:00pm-11:00pm Room hopping & informal social hour at the Hotel Anthracite bar & lounge.  
11:00pm Room hopping ends. For the comfort of those going to bed early, any late get-togethers should be held in the hotel bar and/or lounge.

## Saturday, May 11

- 7:00am-10:00am Continental breakfast for guests at the Hotel Anthracite.  
7:30am Convention check-in opens at the Hotel Anthracite banquet room. Table-holders and anyone who registered for early admission may enter the show room for setup.  
9:00am The Transportation History Exposition opens in the Hotel Anthracite banquet room for those who did not register for a table or early admission. Anyone who did not register in advance is welcome to register at the door for a \$10 fee.  
12:00pm Box lunches will be available for pickup by those who ordered them in advance. The restaurant in the hotel will NOT be open for lunch, but there is a Dunkin Donuts and a pizza shop located right across the street.  
1:45pm Please have votes for the “Best in Show” award turned in to the registration desk.  
2:00pm Annual membership meeting of Key Lock & Lantern at the Hotel Anthracite banquet room. The presentation of the “Best in Show” award will take place during the meeting. After the meeting, any last-minute donations to the fundraiser sale may be placed on the auction table.  
2:15pm Annual Key Lock & Lantern fundraiser sale. Donated memorabilia will be sold in an auction style sale, with all proceeds going to support the activities of KL&L.  
3:00pm Transportation History Exposition exhibits close - exhibitors may take down their displays.  
4:00pm Pre-dinner social hour & railroad movies presented by Walt Kierzkowski of the O&W Historical Society in the banquet room.  
5:00pm Key Lock & Lantern Annual Banquet in the Hotel Anthracite banquet room for those who registered in advance.  
6:30pm Transportation history programs, following dinner in the Hotel Anthracite banquet room. Anyone who registered (either in advance or at the door) for the Transportation History Expo is welcome to attend. KL&L members will present railroad history programs, with scheduled topics including the Green Bay & Western Railroad and the Delaware, Lackawanna & Western Railroad.  
9:30pm Presentations by KL&L members continue in the Canary Lounge & social hour in the bar.

## Sunday, May 12

- 7:00am-10:00am Continental breakfast for guests at the Hotel Anthracite.  
9:00am-5:00pm Open schedule for those wishing to visit Steamtown, the Electric City Trolley Museum, and other local historic sites.



# KL&L Convention Excursion

Continued from Page 4

The Key Lock & Lantern charter train will follow the same scenic route as the public excursions, but the schedule is tailored to railroad fans whose primary interest is in taking the ride. The KL&L train will depart from Pittston at 10:00am, arriving in Jim Thorpe at noon, and will depart at 2:30pm, arriving back in Pittston at approximately 4:30pm.



The KL&L train offers the perfect opportunity for serious railfans and history buffs to enjoy the train ride, with a total time from check-in to return of about seven hours, as compared with a ten hour day on the public excursions. And, your fellow passengers all have an interest in railroad history and operations, making for more enjoyable company on the trip.



As of the publication of this newsletter, there are still a few seats available in “Crown Class” coaches, which feature reclining fabric seats and windows that open to offer an unobstructed view for photography. The train includes a dining car, where snacks and drinks may be purchased (cash only), along with a variety of souvenirs.

The railroad also just added parlor car seating to the Pittston trainset, and those seats were made available to the first twenty passengers who had already registered for the ride. Not surprisingly, those seats were immediately booked, but coach passengers may request to be added to a waiting list, in the event of a last minute cancellation.

The two hour layover in Jim Thorpe will allow passengers to get lunch on their own at one of the nearby restaurants, and to stop in the visitor’s center in the restored Central of New Jersey passenger station.



*There are several restaurants open for lunch located within a block or two of the train station in Jim Thorpe, PA.*

Registration for the train ride is open to everyone, for a fee of \$39 per coach seat, which may be reserved on the Key Lock & Lantern website at [www.klnl.org](http://www.klnl.org). With fantastic scenery in the Poconos and Lehigh Gorge, which includes several tunnels and trestles, and historic trackage that was once operated by the Lehigh Valley and Jersey Central, this is a trip not to be missed!



Several exhibitors are experts at lantern restoration, and are always happy to give advice, or to offer their repair services. Lock and key collectors will find plenty of scarce examples for their collections, and can exchange “want lists” with others who are looking for similar artifacts.

A growing number of timetable and paper collectors have been participating in the show in recent years, with several members of the National Association of Timetable Collectors scheduled to exhibit this year. From rare 19th century employee timetables to modern public timetables in the “dollar bin,” there is something available to fit every ephemera collector’s budget. A variety of used books on transportation and industrial history subjects are also usually offered for sale by various exhibitors.



There is always some interesting (and sometimes scarce) memorabilia to buy, and it is a great opportunity to pass along something that is no longer needed in a collection, while supporting a good cause.

The annual membership meeting of Key Lock & Lantern will be held at 2:00pm on Saturday afternoon, in the exhibit hall. The “Best in Show” award will also be presented to the member whose display receives the most votes from show attendees.

Setup for the Transportation History Exposition begins at 7:30am, with doors to the Gravity Hall opening at 9:00am. All interested collectors and transportation history buffs are invited to attend, with a \$10 registration fee per person collected at the door. Early admission passes are available for \$20 per person (in addition to the registration fee), which allows entry to the exhibit hall during setup.

Several new exhibitors are registered to attend this year, along with members who don’t do shows and are thinning collections, and the regulars with their usual selection of rare artifacts. Don’t miss out - make plans to attend today!



Several historical societies are also expected to have tables at the show, offering books and memorabilia for sale, and providing information about their group’s activities. The KL&L Convention is an excellent event for networking with fellow historians, and members of these groups are looking forward to meeting collectors with similar interests.

The KL&L fundraiser sale will take place in the afternoon, with several tables of donated memorabilia to be sold to the highest bidder. All proceeds from this event are used to keep registration fees at a reasonable level, with the convention operating on a break-even basis every year as a result.



# Carbondale Historical Society Museum Preserves Fascinating History of Region

It is not merely by chance that the Key Lock & Lantern Convention has returned to Carbondale, PA for the past several years - the region is filled with numerous reminders of its fascinating transportation and industrial history. Located on the third floor of City Hall, the Carbondale Historical Society and Museum houses a collection of artifacts related to the industries that led to the growth of the city. For visitors who are exploring historic sites in the area, it is worth making a stop at the museum.

Memorabilia from the region's railroads and coal mines is on display, along with artifacts from businesses in the local community where many of the workers lived. In addition to the exhibits, the Historical Society also maintains a research room in the museum, for those studying the history of the region, its industries, and local genealogy.

City Hall is located at One North Main Street in downtown Carbondale. The museum's hours are generally from noon to 5:00PM, Monday through Friday, but it is highly recommended that visitors call ahead to confirm that it will be open. Call 570-282-0385 or email the historical society at [carbondalehistorical@gmail.com](mailto:carbondalehistorical@gmail.com) for more information, to confirm hours, or make an appointment. The society also maintains a website at <https://carbondalepahistorical.org>.



*A variety of railroad memorabilia is on display at the Carbondale Historical Society Museum. CHSM photo.*



*The Carbondale Historical Society Museum exhibits explore the area's transportation history. CHSM photo.*



*Other displays include artifacts from local businesses and the surrounding community. CHSM photo.*



# Stourbridge Line Railroad Kicks Off 2024 Excursion Season with Special Runs

Key Lock & Lantern members who attended the convention in 2021 enjoyed a ride on the nearby Stourbridge Line tourist train from Honesdale to Hawley, PA. For those who missed the trip or would like to take in the scenery along the Lackawaxen River again, the railroad has just announced a full schedule of trains for the 2024 season.

All trips are currently operating over the same route from Honesdale to Hawley (we hope to go back for another KL&L trip when service is restored to Lackawaxen), and feature a



variety of theme trains that will appeal to railfans and family members alike. From beer and wine trains, to dinosaur and superhero trains, there is something for everyone. Schedules range from the one and a half hour round trip, to all-day runs with layovers for local events.

Information about the different trips, complete schedules, and online ticket purchasing are available on the Stourbridge Line railroad's website at [www.thestourbridgeline.net](http://www.thestourbridgeline.net).



## **KEY LOCK & LANTERN**

**Can Help Promote Your  
Auction, Show or Event  
With Advertising in KL&L Publications  
2700+ Facebook Followers  
200+ Daily Website Visits  
520+ Newsletter Subscribers**

Contact KL&L Editor Dave Hamilton at  
[transportsim@aol.com](mailto:transportsim@aol.com)

# Steamtown Train Rides Resume for the 2024 Season Beginning on May 4th

All aboard! Steamtown National Historic Site (NHS) train rides resume for the 2024 season on Saturday, May 4. The Steamtown rail experience varies from short 30-minute trips exploring the park's historic railroad yard to full-day trips along the Pocono or Carbondale lines. Our short train rides will begin on Saturday, May 4 and the first excursion trip of the season will head to Gouldsboro, PA on Saturday, May 25.

Beginning Saturday, May 4, the short train rides will operate Saturdays and Sundays. Departure times are: 10:30am, 11:30am, 1:15pm, and 2:30pm. Beginning Saturday, June 1, the short train rides will operate Fridays, Saturdays, and Sundays. Departure times are: 10:30am, 11:30am, 1:15pm, and 2:30pm.



Tickets for short train rides are \$6 for passengers over the age of 5; \$1 for passengers aged 5 and under. Tickets are valid all day for the date of visit and may be used for multiple short train ride experiences. For all short train rides, seating availability is first come, first served. We recommend getting in line 15-20 minutes ahead of scheduled departure time. Visitors may also purchase any of our tickets on-site at the Information Kiosk, credit card only.

Located in downtown Scranton, Pennsylvania, Steamtown NHS is open 10:00am to 4:00pm, daily. Beginning Sunday, April 21, 2024, Steamtown NHS will be open 9:30am to 5:00pm, daily. From Interstate-81 follow exit 185 (President Biden Expressway, formerly known as Central Scranton Expressway); then follow the brown and white signs to the park entrance at Lackawanna Avenue and Cliff Street (GPS: N 41.41, W 75.67). General park information is available by visiting the park website at <https://www.nps.gov/stea/>. *News courtesy of Steamtown NHS.*

# Trolley Rides on Laurel Line Open for 2024 at Electric City Trolley Museum

KL&L members who attended the Key Lock & Lantern Convention in 2019 enjoyed a chartered trolley trip over the former Lackawanna & Wyoming Valley “Laurel Line.” For those who missed the trip (or would like to take another ride), the Electric City Trolley Museum in Scranton, PA has resumed its regular excursion schedule for the 2024 season. The ride takes approximately 1 1/2 hours, with the restored trolley cars making the run over portions of the original 3rd rail line and Erie Railroad trackage, including the 4747-foot long Crown Avenue Tunnel. While the motorman changes ends, passengers may view the museum’s car barn, where restoration projects are taking place.

The museum itself is filled with displays of interurban and street railroad memorabilia and rolling stock. Both serious traction fans and those with a casual interest in this aspect of transportation history will find the exhibits to be interesting and informative. All types of artifacts are on display, from electrical equipment to photos, lanterns and ephemera, from local lines and other transit systems. A visit to the museum will certainly help with identifying those unusual trolley items at future shows and auctions.

The Electric City Trolley Museum is located at 300 Cliff Street in Scranton, PA, across the parking lot from the main entrance to Steamtown. The museum is open daily from 9am to 4pm, with excursions operating from Thursday through Sunday. For more information, and to confirm the trolley trip schedule, call the museum at 570-963-6590 and visit their website at [www.ectma.org](http://www.ectma.org).



*The Key Lock & Lantern chartered trolley excursion exits the 4747-foot long Crown Avenue Tunnel on the former Laurel Line Route in 2019. Dave Hamilton photo*



*The Electric City Trolley Museum is filled with displays of all types of trolley memorabilia. Dave Hamilton photo*



*2019 Key Lock & Lantern Convention participants enjoy the exhibits of historic street & interurban railroad rolling stock at the Electric City Trolley Museum. Dave Hamilton photo*

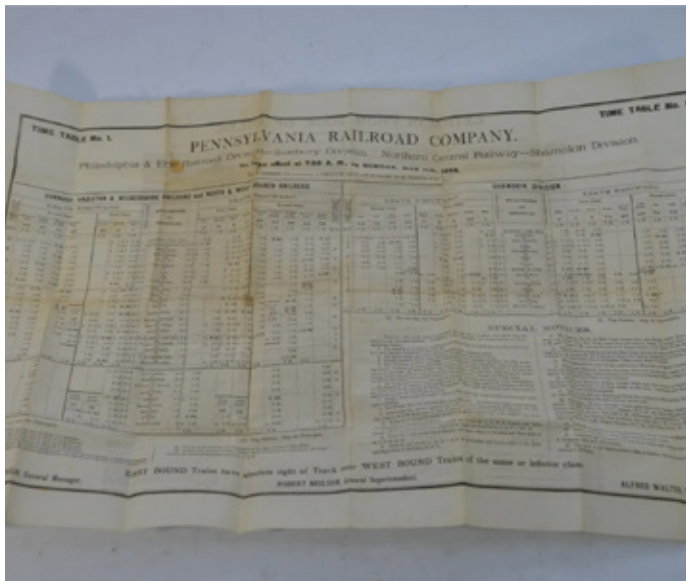
**KEY LOCK & LANTERN**  
Ads Reach Serious Collectors  
Contact KL&L at [transportsim@aol.com](mailto:transportsim@aol.com)



*A \$325 high bid purchased this Delaware Lackawanna & Western Phoebe Snow 9.5" dinner plate from Straus.*



*A 15-inch brass steam whistle by Crosby went to the home of a new collector for a high bid of \$950.*



*An 1884 Pennsylvania RR employee timetable covering the Philadelphia & Erie and Northern Central sold for \$550.*



*A \$400 bid was needed to buy this destination sign from the Chicago Transit Authority elevated line.*



*A high bid of \$800 was needed to take home this huge Burlington Northern Railroad metal logo bridge sign.*



*A pair of Chicago Milwaukee & St. Paul Railway class lamps went to a new home for a \$700 high bid.*



*A \$300 bid purchased this Western Electric candlestick phone, wall ringer box and scissor arm mount.*



*A box of 66 rolls of Life Savers Pep-O-Mint candy labeled for the DT&I and Ann Arbor railroads sold for \$130.*



*A \$1000 bid sent this Illinois Central Railroad Land O' Corn pattern teacup and saucer home to a new collector.*



*The red cast AT&SF Ry globe in an AT&SF Adlake Kero was the reason that this shorty brought a \$225 bid.*



*A \$900 bid purchased this set of two Swiss and one Spanish railroad travel posters from the 1940's.*

# CLASSIFIED ADS

Classified ad listings are free for Key Lock & Lantern members. Ad size must fit in four lines, and must include a name and contact email address (the word "at" may be substituted for "@" in the email address, if desired) or website address. A maximum of five ads per person may be run at the same time. Send ads to Dave Hamilton at [transportsim@aol.com](mailto:transportsim@aol.com).

## Auctions

**Brookline Auction Gallery.** Brookline, NH. Railroadiana consignment & estate auctions. Contact sales manager Scott Czaja at [sczaja@hotmail.com](mailto:sczaja@hotmail.com) or visit [www.tagtown.net](http://www.tagtown.net).

**JM Hobby Supply & Railroad Artifacts.** Luxemburg, WI. Railroadiana consignment & estate auctions. Contact John DeBeck at [jmhobbysupplyandrrartifacts@gmail.com](mailto:jmhobbysupplyandrrartifacts@gmail.com) or visit [www.jmhobbysupply.com](http://www.jmhobbysupply.com).

**Railroad Memories.** Georgetown, CO. Online consignment & estate auctions. Contact Sue Knous at [railroadmemories@gmail.com](mailto:railroadmemories@gmail.com) or visit [www.railroadmemories.com](http://www.railroadmemories.com).

**Rail & Road Auctions.** Lafayette, IN. Online railroadiana auctions. Contact Derek Thomas at [info@RARauctions.com](mailto:info@RARauctions.com) or visit <https://rarauctions.com>.

## Locks & Keys

**Wanted: Switch Key** from the Baltimore Transit Company (B T Co.) Will pay a good price for a key in decent condition. Dan Allen: [NJSRR\(at\)aol.com](mailto:NJSRR(at)aol.com).

**Wanted: Locks** - fancy cast back railroad switch locks. Warren Nyerges: [warrennyergesjr@hotmail.com](mailto:warrennyergesjr@hotmail.com) or visit [www.antiquerailroadlock.com](http://www.antiquerailroadlock.com).

## Locomotive & Rolling Stock Hardware

**Builder's Plates for Sale.** Original steam, diesel & electric builder's & number plates. Contact us for a current list of plates. Ron Muldowney: [rjmuldowney@comcast.net](mailto:rjmuldowney@comcast.net).

## Railroadiana Dealers

**Times Treasures** Railroad & Country Collectibles on Ruby Lane. All types of railroadiana, with new items added on a regular basis. <http://www.rubylane.com/shop/timestreasures>

## Trolleys & Transit

**Wanted: Photos of Syracuse, NY** trolley car #1024 & trolley cars around Syracuse University & Archbold Stadium. Dave Hamilton: [transportsim@aol.com](mailto:transportsim@aol.com).

## The Bi-Monthly Digital

## KEY LOCK & LANTERN NEWS

Sent by Email Link to 520+ Subscribers

Visible to 200+ Daily Website Visitors

Appears in Internet Searches

Submit your ad to: [transportsim@aol.com](mailto:transportsim@aol.com)

*Want Ads Are Back!*

*Free for KL&L  
Members!*

*Read Submission  
Guidelines & Send to  
the Editor!*

- May 16-19 Durand, MI** - Durand Railroad Days - Various Events Around Town.  
Info: [www.durandrailroaddays.com](http://www.durandrailroaddays.com).
- May 16-19 Minneapolis, MN** - Society for Industrial Archeology Annual Conference.  
Info: [www.sia-web.org](http://www.sia-web.org).
- May 18 Chester, MA** - Chester On Track Festival. Chester Railway Museum.  
Info: <https://chesterontrack.com/>.
- May 18-19 Spencer, NC** - North Carolina Transportation Museum Spencer Shops Train Show.  
Info: [www.nctrans.org](http://www.nctrans.org).
- Jun 9 St. Charles, IL** - Kane County Railroadiana Show. Kane County Fairgrounds.  
Info: [www.rrshows.com](http://www.rrshows.com).
- Jun 13-16 Roanoke, VA** - Norfolk & Western Historical Society Convention  
Info: [www.nwhs.org](http://www.nwhs.org).
- Jun 22 Painesville, OH** - Painesville Depot Railroad Memorabilia Show.  
<http://painesvillerrailroadmuseum.org>.
- Jun 22-23 Dayton, OH** - Miami Valley Rail Festival at Carrillon Park.  
Info: [www.railfestival.com](http://www.railfestival.com).
- Jun 23-28 Pittsburgh, PA** - American Bell Association Convention..  
Info: [www.americanbell.org](http://www.americanbell.org).
- Jun 26-30 Albuquerque, NM** - Santa Fe Railway Historical Society Annual Convention.  
Info: [www.atsfr.com](http://www.atsfr.com).
- Jun 27-30 Winona, MN** - Milwaukee Road Historical Association Convention..  
Info: [www.mrha.com/](http://www.mrha.com/).
- Jun 29-30 Luxemburg, WI** - JM Hobby Supply & Railroad Artifacts Railroadiana Auction.  
Info: <http://www.jmhobbysupply.com>.
- Jul 13 DeLand, FL** - Florida Rail Fair. Golden Spike Enterprises  
Info: [www.gserr.com](http://www.gserr.com).
- Jul 13 LaCrosse, WI** - 4000 Foundation LaCrosse Rail Fair  
Info: <https://www.4000foundation.org>.
- Jul 20 Eldersburg, MD** - Baltimore & Ohio Railroad Historical Society Mini-Convention.  
Info: [www.borhs.org](http://www.borhs.org).
- Jul 20 Joplin, MO** - Joplin Museum Train Show. Joplin Museum Complex.  
Info: [www.tristatamodelrailroaders.com](http://www.tristatamodelrailroaders.com).

## Send listings to: [transportsim@aol.com](mailto:transportsim@aol.com)

There is no charge for calendar listings. Train shows must include dealers of authentic railroad memorabilia or related material, and auctions must include at least 20 lots of railroadiana. Other events must be directly related to railroad history (special exhibitions, lecture programs, conventions, limited excursions, etc.). Regular monthly group meetings, model train meets & scheduled tourist train trips are not eligible, unless related to a special event. Events are listed space permitting, at the editor's discretion. Listings are subject to error or change. Always check show web sites before traveling.

Visit [www.klnl.org](http://www.klnl.org) for More Listings

# Key Lock & Lantern News & Information

## Key Lock & Lantern Email List

If you are not already receiving the link to this newsletter directly from KL&L, go to the "Contact KL&L" page on the Key Lock & Lantern website at [www.klnl.org](http://www.klnl.org) and sign up for our email list. You will receive links to the *KL&L News* when it is published and occasional notifications of events of interest to members. The email list is hosted by MailChimp, which makes it easy to unsubscribe at any time, and KL&L never sells or shares its email list with outside parties. Don't miss important news and announcements - sign up today!

## KL&L Facebook Page

For current news and announcements, visit the Key Lock & Lantern page on Facebook at <https://www.facebook.com/railroadiana>. Up to date information about the Key Lock & Lantern Convention, newsletter & magazine publication, and upcoming shows and auctions is posted on the page. There are also hundreds of photos of modern & historical railroad operations, railroad & transportation memorabilia, and views of recent shows and events. Be sure to "follow" the page, so that posts show up in your news feed.

## KL&L YouTube Channel

The Key Lock & Lantern YouTube channel showcases videos of modern and historical railroad operations, steam train excursions, and KL&L Convention highlights. Visit the channel at <https://www.youtube.com/user/KeyLockLantern>. Be sure to hit the subscribe button and leave comments on the videos that you enjoyed!

## Want Ads for KL&L Members

As noted in previous issues, the "Want Ad" section of the *KL&L News* is undergoing an update to remove outdated notices. If you would like to submit an ad for inclusion in future issues, contact KL&L editor Dave Hamilton at [transportsim@aol.com](mailto:transportsim@aol.com). Basic want ads are free for current Key Lock & Lantern members.

## Member Address Changes & Corrections

The *Key Lock & Lantern* magazine is sent via First Class Mail and is therefore forwarded by the U.S. Postal Service for the designated period following an address change. However, due to the frequency of publication of the magazine, the time for forwarding may expire in between issues, and your magazine may be returned to KL&L. Please make sure that Key Lock & Lantern is on your list of organizations to notify in the event of a change of address. Also, please check your mailing label when receiving your copy of the magazine, and advise KL&L if any corrections are needed. Contact Marie Brainard at [j944wb@aol.com](mailto:j944wb@aol.com) if changes are required.



For News & Information, Visit the KL&L Page on Facebook. Use the link at [www.klnl.org](http://www.klnl.org).

# KEY LOCK & LANTERN

Can Help Promote Your  
**Auction, Show or Event**

With Advertising in KL&L Publications

**2700+ Facebook Followers**

**200+ Daily Website Visits**

**520+ Newsletter Subscribers**

Contact KL&L Editor Dave Hamilton at  
[transportsim@aol.com](mailto:transportsim@aol.com)



**All submissions for the KL&L magazine,  
news items for the digital KL&L News  
& general inquiries should be sent to:**

KL&L President & Editor  
David Hamilton  
E-mail: [transportsim@aol.com](mailto:transportsim@aol.com)

**Send membership applications, dues  
payments, and address changes to:**

KL&L Chairman John Brainard &  
VP-Membership Marie Brainard  
E-mail: [j944wb@aol.com](mailto:j944wb@aol.com)

Join or Renew Your  
**KEY LOCK & LANTERN**  
Membership Online at  
[www.klnl.org](http://www.klnl.org)

## KL&L Membership Form (2024 Membership Year)

Please make check or money order payable to Key, Lock & Lantern, Inc. and forward to:  
Marie Brainard, KL&L Membership, 35 Nordhoff Place, Englewood, NJ 07631-4810

Name \_\_\_\_\_

Representing (business or museum, if applicable) \_\_\_\_\_

Address \_\_\_\_\_

City \_\_\_\_\_ State/Prov \_\_\_\_\_ Zip/Mail Code \_\_\_\_\_

Phone \_\_\_\_\_ E-mail \_\_\_\_\_

Basic membership at \$40 per year (1st Class mailing in USA) or \$60 per year (non-USA).....\$ \_\_\_\_\_

Additional Donation.....\$ \_\_\_\_\_

Enclosed is my check / money order payable to Key Lock & Lantern, Inc. for.....\$ \_\_\_\_\_

Membership in KL&L includes 4 issues of the printed magazine, special member rates for KL&L Convention registration, and access to "members only" content on the KL&L website. New members joining before September will receive all previously published magazines for the year, and will be due for renewal in the following January. New members joining in September or later will have their dues applied to the next membership period, beginning with the Jan/Feb/Mar issue, unless otherwise requested.



# KEY LOCK & LANTERN

52nd Annual Convention - May 9-12, 2024

Hotel Anthracite - Carbondale, PA

Railroadiana Show & Sale - May 11th

Lanterns, Timetables, Books, Locks, Photos, Memorabilia,  
Tools, Keys, Ephemera, China, Badges, & More

Special Excursion Train Pittston  
to Jim Thorpe, PA - May 10th

Transportation History Exhibits  
Lectures - Slide Shows - Banquet



[WWW.KLNL.ORG](http://WWW.KLNL.ORG)

Visit the KL&L Website for Registration Information & Free Newsletters



# KEY LOCK & LANTERN

52nd Annual Convention - May 9-12, 2024

Hotel Anthracite - Carbondale, PA

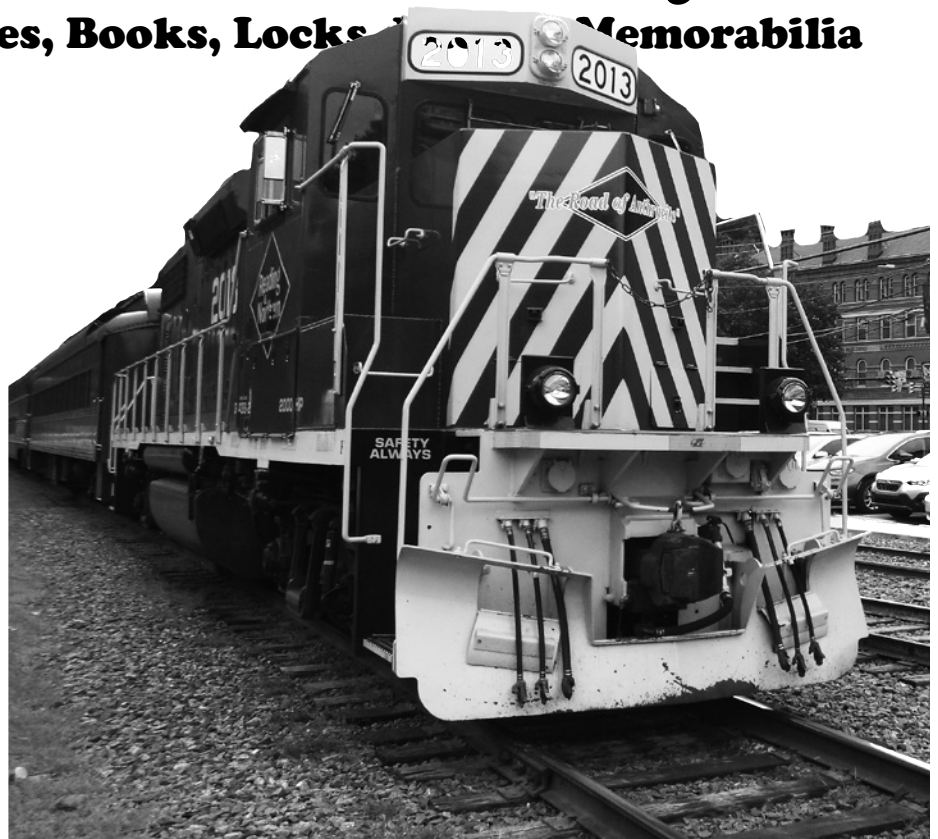
Special Excursion Train Pittston to  
Jim Thorpe, PA - Friday, May 10th

Railroadiana Show & Sale - May 11th

Lanterns, Timetables, Books, Locks & Memorabilia



History Exhibits  
Lectures - Slide Shows  
Banquet Dinner



[WWW.KLNL.ORG](http://WWW.KLNL.ORG)

Visit the KL&L Website for Registration Information & Free Newsletters

