



# KEY LOCK & LANTERN NEWS



Jan/Feb 2018

Issue No.49

*The Bi-Monthly Digital Supplement to Key Lock & Lantern Magazine*



**2018 Key Lock &  
Lantern Convention**

**Railroad Preservation  
& Museum News**

**Brookline Railroad  
Auction Report**



# KEY LOCK & LANTERN NEWS



The Bi-Monthly Digital Supplement to Key Lock & Lantern Magazine  
WWW.KLNL.ORG

Jan/Feb 2018

Issue #49

From the President's Desk .....	3
Railroad Event Calendar.....	3
Key Lock & Lantern Convention Registration Open .....	4
Fall 2017 Brookline Railroadiana Auction.....	8
Threat to Adirondack Scenic RR Continues.....	13
Rails Along the Mohawk Show.....	14
Age of Steam Roundhouse Tours.....	15
Springfield Railroad Hobby Show.....	16
Want Ads & Announcements.....	18
Membership Application .....	20
KL&L Convention Member Registration.....	21
KL&L Convention Non-Member Registration.....	22
<b>KL&amp;L News Editor.....</b>	<b>David Hamilton</b>
<b>Production Facilities.....</b>	<b>NY-PA Collector Magazine</b>

The Key, Lock & Lantern News is published bi-monthly as a digital supplement to the quarterly Key, Lock & Lantern magazine. Recipients may repost or forward complete and unmodified copies of this newsletter to other hobbyists and websites, but its content may not otherwise be copied or distributed without the permission of the KL&L Board of Trustees. Copyrights are held by the respective authors and photographers. Excerpts of news items may be published with the credit line "Key, Lock & Lantern News"

Annual membership dues for Key, Lock & Lantern are \$30 for residents of the USA, and \$40 for outside of the USA (by money order or electronic payment in US funds). Members receive four issues of the quarterly KL&L magazine, delivered via first class mail. Memberships for additional family members are \$5 each (only one magazine is sent per family). Applications for membership & address changes should be forwarded to the VP-Membership at the e-mail address listed at right. Online membership forms and dues payment via Paypal are available at [www.klnl.org](http://www.klnl.org).

Contributions of articles, photos, and news may be forwarded to the editor at the e-mail address listed at right. Hard copy articles should be written on 8 1/2 x 11" paper, and typed or neatly printed. Photos should be sent with a caption card attached which includes the contributor's name, phone number, and description. Photocopies of advertising and supply catalogs are acceptable. The submission of material in digital format is preferred, with text files in DOC, TXT, or PDF format, and images in JPG, TIF, BMP or GIF format. Digital files may be sent by e-mail or on a computer CD or flash drive. Please contact the editor regarding optimum file sizes and formats.

By submitting material to Key, Lock & Lantern, the contributor grants permission for use in any edition of the KL&L magazine, digital newsletter, websites, and other publications. All material will be retained by KL&L for future use, unless the contributor specifically requests that it be returned, and includes a suitable, self-addressed, stamped envelope. Current deadlines are listed in the Key, Lock & Lantern Advertising Guide, which is available on the KL&L website at [www.klnl.org](http://www.klnl.org), or by contacting the editor.

## Key, Lock & Lantern

A non-profit membership corporation dedicated to the preservation of transportation history and railroad memorabilia

*The mission of Key, Lock & Lantern is to gather and publish information on the history of the transportation industry, and to support the preservation of railroad artifacts. KL&L members have an interest in all aspects of railroad & transportation history, from research and preservation projects to the conservation and restoration of all types of historical memorabilia. Originally formed in 1966, Key, Lock & Lantern, Inc. was officially incorporated in 1988 as a non-profit, educational, membership corporation in the State of New Jersey, under the provisions of Section 501(c)(3) of the United States Internal Revenue Code. Membership is open to anyone with an interest in transportation history and in achieving the goals of the organization.*

### Officers & Trustees

#### Chairman of the Board

John Brainard  
j944wb@aol.com

#### President & Editor

David Hamilton  
transportsim@aol.com

#### VP- Membership / Treasurer

Marie Brainard  
j944wb@aol.com

#### Secretary

Marie Brainard (Acting)

#### Chaplain

Chip Greiner

#### Counsel

Jeremy Tuke

#### Historian

Peter Gores

#### Trustees at Large

Lyman Gray, Sam Lombardi, Joel Shaw, Sam Ferrara, Phil Simms, Leonard Gordy, Bob Lipman, and Randy Bushart

[www.klnl.org](http://www.klnl.org)



For Current News  
"Like" KL&L on

facebook

## Time to Register for the 2018 KL&L Convention in Scranton

I'm writing this message shortly after returning from the big railroad hobby show in Springfield, MA, which is considered by many to be one of the main events for railroad fans each year. With five buildings filled with model train layouts, vendors, and representatives of various groups and tourist lines, it is certainly a show that should not be missed.

As always, I hardly had time to see all of the buildings, even though I stayed from opening to closing on both days. It seemed that I ran into someone who I hadn't seen for a year around every turn, and had to stop for a visit. There are probably around twenty railroaders dealers at the show, spread out from one end to another, so my feet were pretty sore by Sunday evening, as well.

As much as I enjoy the Springfield show (and I would heartily recommend going to it), it always reminds my why I like the Key Lock & Lantern Convention even more. The KL&L Convention is focused on railroad and transportation history, so every exhibitor has something that interests me, and they are all conveniently located in one room. There is plenty of time to see all of the displays, pick up something new for the collection, and visit with fellow railroad history buffs and collectors. No rushing around or sore feet!

As noted in the article in this issue, registration for the 2018 Key Lock & Lantern Convention is now open. After a great convention in Scranton, PA last year, we are returning again to the Radisson Lackawanna Station hotel. We had hoped to run an excursion up the former Delaware & Hudson Penn Division, but the railroad will be performing track work on that branch to accommodate an increase in traffic. This is certainly good news, but it will prevent us from using the line this year.

Instead, we will be traversing the old DL&W main again, with a stop at Gouldsboro and then on to Tobyhanna. The old concrete interlocking tower there is owned by the railroad, and we will be given exclusive access to the structure (and have a photo runby). Other museum visits are being planned, and details will be announced soon.

Of course, the best part of the convention is the opportunity to meet other transportation historians and collectors. You will learn more in one weekend than you would believe, make new friends, and just have a fun time talking about trains with current and retired railroaders and enthusiasts. It is certainly worth attending!

Please take a moment to register and make hotel reservations today, while rooms are available at our special rate. I hope to see some new faces (and familiar ones) at the convention this year. As always, thanks for everyone's support.

*Dave Hamilton, KL&L President & Editor*

### On the Front Cover:

The Adirondack Scenic Railroad departs from Lake Placid for the last time on a deadhead move at the end of the 2016 season. See story on Page 13.

## Railroad Event Calendar



**Upcoming historical society conventions, special events, railroaders shows & auctions. Listings subject to change. Check show web sites before traveling and visit [www.klnl.org](http://www.klnl.org) for updates. See submission guidelines at the end of the calendar.**

- Mar 2-3** **Fletcher, NC** - Asheville Train Show. WNC Agricultural Center.  
Info: [www.asheville-trainshow.com](http://www.asheville-trainshow.com).
- Mar 3-4** **Denver, CO** - Rocky Mountain Train Show at the Denver Mart.  
Info: <http://rockymountaintrainshow.com/>.
- Mar 3** **Ft Wayne, IN** - Maumee Valley Railroad Club Model Railroad Show & Swap Meet..  
Info: <http://maumeevalleyrailroad.com>.
- Mar 4** **Clark, NJ** - Jersey Central NRHS Train Show. Mother Seton High School.  
Info: [www.jcrhs.org](http://www.jcrhs.org).
- Mar 4** **Perris, CA** - Orange Empire Railway Museum Railroaders Swap Meet.  
Info: [www.oerm.org](http://www.oerm.org).
- Mar 10** **Steelton, PA** - Harrisburg Railroad Show.. Abel Union Hall.  
Info: <http://harrisburgnrhs.org>.
- Mar 12** **Old Greenwich, CT** - Southern Connecticut Model Train Show.  
Info: [www.southerncttrainshow.com](http://www.southerncttrainshow.com).
- Mar 17** **Corvallis, OR** - Winterail Show. Corvallis High School.  
Info: [www.winterail.com](http://www.winterail.com).
- Mar 18** **Kingston, NY** - Railroad Hobby Show. Murphy Midtown Center.  
Info: [www.kingstontrainshow.com](http://www.kingstontrainshow.com).
- Mar 25** **Batavia, NY** - Spring Great Batavia Train Show. Genesee Community College.  
Info: [www.gsme.org](http://www.gsme.org).
- Mar 31** **Joplin, MO** - Joplin Museum Train Show. Joplin Museum Complex.  
Info: [www.tristatamodelrailroaders.com](http://www.tristatamodelrailroaders.com).
- Apr 7** **Pine Bluff, AR** - Arkansas Railroad Museum Railroaders Show & Sale.  
Info: [www.arkansasrailroadmuseum.org](http://www.arkansasrailroadmuseum.org).

*Continued on Page 18*

# Registration Open for the 2018 Key Lock & Lantern Convention

Registration is now open for the 2018 Key Lock & Lantern Convention, to be held over the weekend of June 1-3 at the Radisson Lackawanna Station Hotel in downtown Scranton, Pennsylvania. Printable forms are included at the end of this newsletter, and online registration is available on the KL&L website at [www.klnl.org](http://www.klnl.org).

Activities begin on Friday, June 1st, with “room hopping” to get an early look at what fellow collectors have brought for display (and to get the first chance at memorabilia that is for sale or trade). Steamtown and the Electric City Trolley Museum will be open for convention attendees to visit on their own during the day. The special KL&L rate at the hotel will be in effect starting on Thursday night, for those who plan to arrive early in order to spend Friday at the museums.

The annual Transportation History Exposition will be held in the main hotel ballroom on Saturday, June 2nd, with setup and early admission for pre-registered members at 8:00am, and regular hours of 9:30am to 2:30pm. KL&L members will present a variety of museum-quality exhibits, and offer



*The winner of the 2017 Convention “Best in Show” award was this DL&W exhibit by Randy & Matthew Bushart.*



*The 2017 Key Lock & Lantern excursion departs from Scranton, PA on the former Lackawanna Railroad mainline. Another trip is planned on this route for this year.*

transportation memorabilia for sale or trade. The focus of the show is completely on history and authentic artifacts, with over 60 exhibitors attending last year’s event.

The annual meeting of Key Lock & Lantern will take place at 11:00am, followed by the fundraiser sale. This lighthearted event raises funds for the organization through the auction of donated railroad and transportation memorabilia. There are always some good deals to be found, the chance to unload memorabilia that has been hauled around to shows without success, and the occasional gem to bid on. Following the sale, lunch will be available for advance purchase, and the hotel restaurants will be open.

The show will close promptly at 2:30pm, to allow members to pack up before dinner. Cocktail hour will start at 5:00pm, with a buffet dinner served in the platform lounge at 6:00pm. Following dinner, railroad & transportation history programs will once again be presented, with everyone welcome to attend. Anyone interested in presenting may contact Dave Hamilton in advance, to be added to the lineup.

On Sunday, June 3rd, a special KL&L excursion train will depart from behind the hotel at 10:00am, for a trip over the former DL&W main. KL&L had been planning a trip on the D&H Penn Division to Carbondale, but an increase in

*Continued on Page 5*

# 2018 Key Lock & Lantern Convention

Continued from Page 4

business on the line and related trackwork made it impractical to run on that branch this year. We are hoping that it will be possible next year.

Instead, a scenic ride over the DL&W will once again be operated, through the Nay Aug Tunnel to the summit of the Pocono Mountains. A stop is planned at Gouldsboro, for a visit to the museum in the old station (which was somewhat rushed last year, due to the need to get in the clear for a freight train to pass). The train will then continue east to the small town of Tobyhanna, PA, where a DL&W concrete signal tower still stands. This structure is owned by the D-L Railroad, and is generally not open to the public, but our group will be allowed inside. Arrangements will be made for lunch at Tobyhanna and possible additional museum visits, with details to be announced.



*KL&L Convention headquarters is once again in the Radisson Lackawanna Station Hotel in Scranton, PA*



*More than just a train show, the KL&L Convention is all about sharing knowledge of railroad history & collecting.*

The train will then return to Scranton, with one or more additional photo stops planned (time permitting), and arrival between 4:00pm and 5:00pm. Seating will be in a former Erie Lackawanna Comet commuter coach, which will have power for lighting and air conditioning this year, and very limited space in a DL&W caboose and the Erie Lackawanna No.2 office car.

The hotel is offering a special KL&L Convention rate of \$124 per night plus tax, from Thursday through Sunday night. The hotel is located at 700 Lackawanna Ave, Scranton, PA, 18503. Call 570-342-8300 or 866-715-7836 and ask for the Key, Lock & Lantern rate. An online reservation page will be available soon - watch the KL&L website for a link to the hotel site.

A great time was had by everyone who attended the 2017 convention, and although we probably can't top it (it was just that awesome!), the 2018 event is shaping up to be just as good. Train seating and table space is limited, so don't delay - make your reservations and register today!



*KL&L Convention excursion passengers visit the museum in the Gouldsboro station, also on this year's schedule.*



*The banquet dinner will once again be held in the Platform Lounge, where DL&W passengers once boarded trains.*



For Additional Photos, Visit the KL&L Page on Facebook. Use the link at [www.klnl.org](http://www.klnl.org).

Continued on Page 6



*The 2018 KL&L Convention trip will include a visit to one of the former DL&W concrete interlocking towers.*



*The Radisson Lackawanna Station Hotel is the perfect venue for a railroad and transportation history convention.*



*KL&L members arrange a variety of museum-quality displays at the Key Lock & Lantern Convention.*



*The KL&L Convention also includes related displays of industrial and transportation memorabilia.*



*Many KL&L members who do not regularly sell at shows bring railroadiana for sale or trade to the convention.*



*There is always plenty of railroadiana for sale or trade at the annual Key Lock & Lantern Convention.*

# Railroad Memories



## Offering Quality Railroadiana Since 1987

I have had the pleasure of selling many amazing pieces over the years and have proudly realized record prices! Below is just a sample of some of the stars sold in my most recent auctions. I am approaching Auction 100 and plan on opening that issue in December 2017 with a closing date in early January 2018. If you are interested in consigning any quality pieces to this historic auction please contact me.



Great Northern Green  
Cast Globe \$4900



Silver Otto Mears Pass  
Price Realized \$7250



CRI&P BT Lantern  
Price Realized \$4300



D&RG Red Cast Globe-  
Price Realized \$5750



H&BVRY Key  
Price Realized  
\$1600



NP Milk Bottle  
Price Realized \$3600



TPA Silver Pass  
Price Realized \$3200



Santa Fe News Service-  
Price Realized \$2800



Heisler Builders Plate-  
Price Realized \$4200



Colorado & Southern-  
Price Realized \$3100



GNNRY Dwarf Cup  
Price Realized \$1300



D&RG Demi cup  
Price Realized \$3300



UP Egg Cup  
Price Realized \$3600



Union Pacific Sign  
Price Realized \$1400



SA&AP Cast Lock  
Price Realized \$1250

P.O. Box 415

Georgetown, Colorado 80444

Phone: 303-569-5185 Fax: 303-569-5186

[www.railroadmemories.com](http://www.railroadmemories.com) email: [railroadmemories@gmail.com](mailto:railroadmemories@gmail.com)

# Railrodiana from Several Collections is Offered in Fall Brookline Auction

The Fall 2017 edition of the semi-annual railrodiana auction at the Brookline Auction Gallery continued to chip away at several large collections that are simultaneously being offered for sale. Some PRR material was still found in the sale, along with more Alan Thomas photos, and memorabilia from the Delaware & Hudson. Several additional collections have been consigned, and will start appearing in upcoming auctions. Considering what has surfaced so far, they should be good ones! *All photos, prices, and descriptions courtesy of Scott Czaja at Brookline Auction Gallery. Prices do not include buyer's premium and shipping.*



A scarce and unusual police badge from the Great Falls, Sandy Hill & Fort Edward Street RR sold for a \$275 bid.



This Fitchburg Railroad lantern by CT Ham with a nice blue cast FRR globe sold for a high bid of \$900



A \$950 bid was needed to purchase this builder's plate from a New Haven Railroad Alco RS-2 diesel locomotive.



A \$160 bid took home this Hoosac Tunnel & Wilmington Railroad pass from 1897, with a vignette of the tunnel.

Continued on Page 10



# Railroadiana Auction – April 14, 2018 – Brookline, NH

Auction information including photos: [www.tagtown.net](http://www.tagtown.net)

Scott Czaja - Sales Manager (978) 779-2904

*an auction by a collector for collectors*

Quality Lanterns, Western Step Boxes, Alan Thomas Scrapbooks, Timetables, Keys, Baggage  
Tags, Cast Iron Signs – Live Online starts at 10:30 am EST

*Pre-auction box lots for attendees start @ 10:00 am EST*



Catalog on [LiveAuctioneers.com](http://LiveAuctioneers.com) - We also accept absentee bids via: e-mail & mail  
Quality consignments are welcome for future sales - call Scott or email: [sczaja@hotmail.com](mailto:sczaja@hotmail.com)



A reasonable \$100 bid took home this circa-1870 timetable from the Boston & Maine Haymarket Square depot.



This New York Central Acme inspector's lantern by Dietz went to a new home for a \$190 high bid.



One of several rare badges in the sale, this "Conductor" from the Montpelier & Wells River RR sold for \$425.



Pennsylvania RR memorabilia is still bringing high prices, with this brass heart lock & knobby key selling for \$375.



A \$2600 bid was needed to buy the builder's plate from Bangor & Aroostook RR 4-6-0 locomotive No.61.



The Boston & Maine East Milford, New Hampshire porcelain station sign on original wood backing sold for \$800.

*Continued on Page 11*



A Rutland RR clear cast globe in a "RRR" marked Dietz #6 sold for \$350, An Adams & Westalke lantern marked for the Old Colony with clear cast "OCR" globe brought \$425, and a Fitchburg Thompson with green cast globe sold for \$1400.



A \$350 bid took home this "Baggage Man" uniform hat badge from the Sandy River & Rangeley Lakes Railroad.



A New York, New Haven & Hartford gate sign for the Mayflower (and New London on back) sold for \$325.



The builder's plate from New Haven DL109 diesel #0700 went to a new owner for a high bid of \$3200.



Switch keys from the Boston & New York Air Line Railroad (\$500), the Quebec Montreal & Southern Railway (\$150), and the Danbury & Norwalk Railroad (\$650).

### KEY LOCK & LANTERN

Can Help Promote Your Auction, Show or Event

Contact KL&L at [transportsim@aol.com](mailto:transportsim@aol.com)

Continued on Page 12



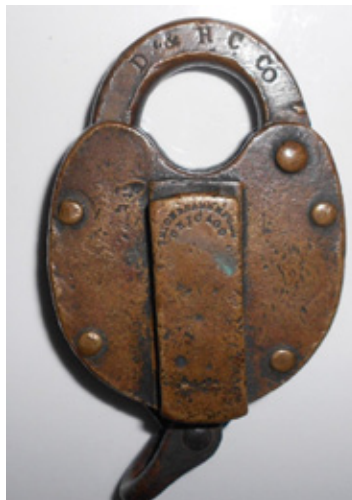
Another rare badge, this Sandy River & Rangeley Lakes "Station Agent" sold for a high bid of \$500.



Reportedly from Bangor & Aroostook 4-6-0 #233, this Manchester Locomotive works plate sold for \$2600.



A nickel plated brass conductor's lantern by Peter Gray with a small repair still brought a \$400 high bid.



A NYNH&H Old Colony Division lock sold for \$350, and a Delaware & Hudson Canal Co. by Union Brass for \$400.



At right, a Delaware & Hudson Fire Department badge sold for \$275, and below, the Maine Central Railroad sign from the Curtis Corner depot brought a \$900 high bid.



# Adirondack Park Agency Considers Changes to Allow Abandonment of the North End of the Adirondack Scenic RR

Regular readers of the *KL&L News* have no doubt been following our ongoing coverage of efforts by New York State to convert part of its former New York Central Railroad Adirondack Division into a recreational trail. Sections of this line have been operated for over 25 years by the Adirondack Scenic Railroad, which has worked toward the restoration of service over the entire route. Trains currently run between Utica and Big Moose, NY, and until last season between Lake Placid and Saranac Lake. In 2017, the state began to implement a plan to abandon the railroad between Tupper Lake and Lake Placid, and the Adirondack Scenic trains on this section were discontinued.

In *KL&L News* Issue #47, we reported on a ruling by a New York State Supreme Court justice which found that the state had not followed proper procedures when it developed the plan to remove the railroad. One of the points made in the ruling was that the Adirondack railroad line was designated as a “travel corridor” under the master plan managed by the Adirondack Park Agency, and thus its use could not simply be changed.



*An Adirondack Scenic Railroad train passes the old New York Central station in Ray Brook, NY on a deadhead move back to Utica in October of 2016.*

In our last issue, we reported that the New York State Attorney General planned to appeal the decision, in an effort to resume work on the project. With political pressure from influential supporters of the trail and local snowmobile clubs (who would benefit from the removal of the rails), it was obvious that the plan to abandon the railroad would not simply fade away.

Now, the Adirondack Park Agency has proposed a change in the definition of a “travel corridor” to include rail-trails in addition to highways and railroad rights-of-way. This change would address the judge’s ruling that a trail would not conform to the designated use of a travel corridor, by in effect changing the existing rules to fit the new plan.

Public comments on the proposed action will be accepted by the Adirondack Park Agency until May 7, 2018, or may be presented at public meetings to be held in Ray Brook, NY on April 11th, Old Forge on April 24th, and in Albany on April 25th. Visit the APA website at [www.apa.ny.gov](http://www.apa.ny.gov) for more information.



*Tupper Lake Junction will be the end of the line under the new plan that is be pushed forward by New York State. Both photos by Dave Hamilton.*

 For Additional Photos, Visit the KL&L Page on Facebook. Use the link at [www.klnl.org](http://www.klnl.org).

# Annual Rails Along the Mohawk Train Show Supports Alco Historical & Technical Society

The Riverfront Center in Amsterdam, New York will host the fourth annual “Rails Along the Mohawk” train show on Sunday, April 8, 2018. This event has grown in popularity in its first few years of existence, and several dealers of railroadiana now exhibit at what is primarily billed as a model train show.

The show is a fundraising event for the Alco Historical and Technical Society, a non-profit organization that is dedicated to the preservation of the history of this once major producer of locomotives. The society has gathered a variety of memorabilia from the Schenectady Alco plant, with the long term goal of opening a museum. The group is also working on a project to collect oral histories from former Alco plant employees.

With several tables dedicated to the sale of railroadiana, and some artifacts mixed in with models on others, there is always the chance that something good will turn up at this show. While Clark and Allentown kick off the spring train show season in the mid-Atlantic region, the snow has usually just disappeared by April in upstate New York, and this show is often the first stop with new merchandise for some dealers. A visit to the show is also a great way to offer support to the Alco Historical & Technical Society.

After stopping in at the show, there is a constant parade of trains on the former New York Central Water Level Route,



*An Amtrak train arrives in Amsterdam, NY during the 2017 Rails Along the Mohawk train show. The show is held adjacent to the Water Level Route.*

which passes behind the Riverfront Center. A variety of excellent photo locations also exist on both sides of town, including at the nearby Amtrak station. Trainwatching at the station (with some new books or timetables from the show in hand) is a great way to spend a Sunday afternoon.

The Riverfront Center is located in downtown Amsterdam on Main Street (Route 5). The show will be open from 10am until 3pm on April 8th, with a \$5 admission fee. For more information, visit the society website at [www.ahts.org](http://www.ahts.org).



*While primarily a model train show, there are usually several tables of railroadiana for sale.*



*A visitor checks out the Utica & Mohawk Valley NRHS table at the 2017 Rails Along the Mohawk train show.*

# Age of Steam Roundhouse to Offer Guided Group Tours From May Through October

Located among the Amish farms just south of Sugarcreek, Ohio, the Age of Steam Roundhouse is an operating museum with a collection of 20 historic steam locomotives, two dozen diesels and 50 railroad cars. The AoSRH facility is housed in a beautiful, timber-framed, brick roundhouse containing 18 stalls, and has a 115-foot turntable and backshop for locomotive repairs. AoSRH is owned by the non-profit Jerry & Laura Jacobson Foundation.

From May 3, 2018, to October 27, 2018, AoSRH will be open three days a week for pre-scheduled group tours on Thursdays, Fridays, and Saturdays at 10:00 am, 12:00 noon and 2:00 pm. Due to OSHA laws, fire code rules and



*From May through October, guided group tours of the Age of Steam Roundhouse facility will be offered 3 days a week.*

insurance regulations, visitors are not allowed to walk around unescorted at the Age of Steam Roundhouse. For the safety of guests, all AoSRH visitors must be in pre-scheduled tour groups. Since it is not practical for each individual or small group to have its own, personal tour guide, a new minimum size for tour groups has been set at 30 people.

Visit the Age of Steam Roundhouse museum's website at [www.ageofsteamroundhouse.com](http://www.ageofsteamroundhouse.com) to schedule a tour for a club, group or organization to visit the facility. The museum has hosted railfans and retirees, farmers and Model-T car owners, and church groups and Scout troops. Individuals may form their own groups or arrange to join another group's tour. *News and photos from the Age of Steam Roundhouse.*

**Railroad Museums &  
Historical Societies**  
Send in news & photos to  
**KEY LOCK & LANTERN**  
E-mail: [transportsim@aol.com](mailto:transportsim@aol.com)



*The Age of Steam Roundhouse complex includes a working shop for the restoration of historic locomotives.*



*An operational steam locomotive takes on spin on the turntable at the Age of Steam Roundhouse complex.*

# Another Successful Year for the Amherst Railway Society's Springfield Show

The big railroad hobby show sponsored by the Amherst Railway Society, and held each January at the Eastern States Exposition grounds in West Springfield, MA has long been considered the premier railroad hobby event in the east. The show continues to expand, with a fifth building that was added a few years ago now filled up with exhibitors. The 2018 show was a huge success, with over 17,000 people



*Our friends at the Leatherstocking Chapter NRHS gave out information about their Cooperstown, NY train rides.*



*One of the big (literally) attractions at the show was the Boothbay Railway Village's working Porter locomotive.*



*Many museums and historical groups exhibited at the show, including the B&O Railroad Museum in Baltimore.*

visiting during its two day run. When including exhibitors, model train club members, and other volunteers, over 20,000 people attended. Nice weather this season made the trip convenient for the many visitors who traveled from out of state.

The show was started as a model train meet, and over time grew into a trade show for model railroad manufacturers. Railroad historical societies, tourist lines, and museums also have jumped on board, as it is the perfect venue to promote their activities. Among the hundreds of vendors, there are close to 20 dealers of railroadiana, which requires some degree of effort to find them all. The show is just that huge!

A recent trend has been the addition of displays of full-size railroad equipment, with a narrow-gauge Porter locomotive under steam in the parking lot during the last two shows. Model railroad clinics were held throughout the weekend, and several local clubs set up gigantic modular layouts.

By the end of the weekend, everyone had sore feet and hoarse voices, but they were already looking forward to next year's "main event."

*Photos Continued on Page 17*





Over a dozen dealers of railroadiana were found at the show, spread out through its five large buildings.



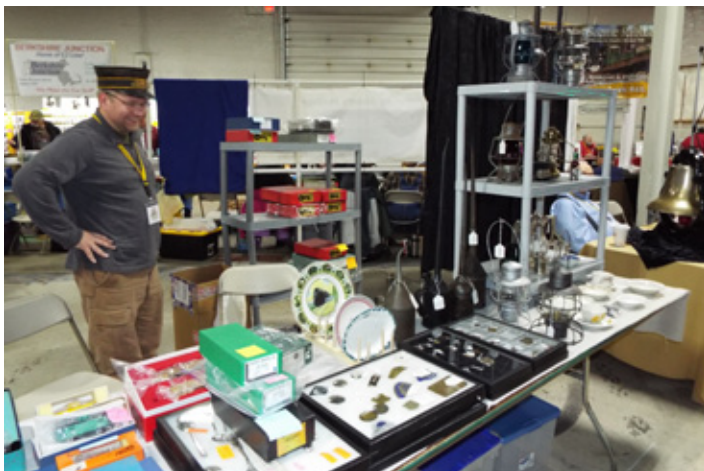
A recent trend has been the display of railroad equipment, such as this car from the Shore Line Trolley Museum.



A huge selection of timetables and other paper were offered by several dealers at the Springfield show.



Volunteers from the Berkshire Scenic Railway Museum promoted their new excursion route in North Adams, MA.



Dealers at the Springfield show offered some higher end memorabilia, in addition to the usual "train show" stock.

## KEY LOCK & LANTERN

Can Help Promote Your  
Auction, Show or Event

Contact KL&L at [transportsim@aol.com](mailto:transportsim@aol.com)

# Railroad Event Calendar

Continued from Page 2

- Apr 7** **St. Cloud, MN** - Granite City Railroad Show. Rivers Edge Convention Center. Info: [www.granitecitytrainshow.com](http://www.granitecitytrainshow.com).
- Apr 8** **Amsterdam, NY** - Alco Historical Society Rails Along the Mohawk Train Show. Info: [www.ahts.org](http://www.ahts.org).
- Apr 14** **Brookline, NH** - Railroadiana Consignment Auction. Brookline Auction Gallery. Info: [www.tagtown.net](http://www.tagtown.net).
- Apr 14-15** **Calgary, AB** - Super Train Railroad Show. Genesis Centre. Info: [www.supertrain.ca](http://www.supertrain.ca).
- Apr 14** **Columbus, OH** - Buckeye Railroadiana Show. Ohio Expo Center. Info: [www.gserr.com](http://www.gserr.com).
- Apr 14** **DeLand, FL** - Florida Rail Fair. Volusia County Fairgrounds. Info: [www.gserr.com](http://www.gserr.com).
- Apr 14-15** **New Braunfels, TX** - Train Show. New Braunfels Civic Center. [www.nbrm.org](http://www.nbrm.org)
- Apr 15** **Monaca, PA** - Beaver County Model RR & Historical Society Train Show. Info: [www.bcmrr.railfan.net](http://www.bcmrr.railfan.net).
- Apr 19-22** **Kansas City, MO** - Katy Railroad Historical Society Convention. Info: [www.katyrailroad.org](http://www.katyrailroad.org).
- Apr 21-22** **Colorado Springs, CO** - Train Expo Colorado Chapel Hills Mall Event Center. Info: [www.tecoshow.org](http://www.tecoshow.org).
- Apr 28-29** **Rouses Point, NY** - Rutland Railroad Historical Society Annual Convention. Info: [www.rutlandrr.org](http://www.rutlandrr.org)
- Apr 29** **Griffith, IN** - Blackhawk Chapter NRHS Swap Meet Railroadiana Show. Info: [www.blackhawknrhs.org](http://www.blackhawknrhs.org)
- Apr 29** **Helena, MT** - Annual Helena Railroad Fair. Info: <https://www.facebook.com/Helena-Railroad-Fair-225320020901434/>.
- May 4-6** **Cleveland, OH** - New York Central Historical Society Convention. Info: <http://nycshs.org>.
- May 5-6** **Taylor, TX** - Austin Area Train Show at the Williamson County Expo Center. Info: [www.austinrailway.org](http://www.austinrailway.org).
- May 9-12** **Altoona, PA** - Pennsylvania Railroad Tech & Historical Society Meeting. Info: [www.prrths.com](http://www.prrths.com).
- May 19** **Chester, MA** - Chester On Track Festival. Chester Railway Museum. Info: [www.chesterrailwaystation.net](http://www.chesterrailwaystation.net).
- May 31+** **St. Louis, MO** - Railway & Locomotive Historical Society Convention. Info: [www.rlhs.org](http://www.rlhs.org).
- Jun 1-3** **Scranton, PA** - Key, Lock & Lantern Convention. Railroad History Expo. Info: [www.klnl.org](http://www.klnl.org).
- Jun 2-3** **Tampa, FL** - Railroad Show. Florida State Fairgrounds. Info: [www.gserr.com](http://www.gserr.com)

## Send listings to: [transportsim@aol.com](mailto:transportsim@aol.com)

There is no charge for calendar listings. Train shows must include dealers of authentic railroad memorabilia or related material, and auctions must include at least 20 lots of railroadiana. Other events must be directly related to railroad history (special exhibitions, lecture programs, conventions, limited excursions, etc.). Regular monthly group meetings, model train meets & scheduled tourist train trips are not eligible, unless related to a special event. Events are listed space permitting, at the editor's discretion. Listings are subject to error or change. Always check show web sites before traveling.

## Visit [www.klnl.org](http://www.klnl.org) for Updates

## KEY LOCK & LANTERN

Can Help Promote Your

## Auction, Show or Event

With Advertising in KL&L Publications

1250+ Facebook Members

1200+ Monthly Web Visitors

750+ Newsletter Readers

Contact KL&L Editor Dave Hamilton at [transportsim@aol.com](mailto:transportsim@aol.com)

# The New York-Pennsylvania COLLECTOR

Living with Antiques, Art & Americana

A Monthly Publication Featuring News & Articles About Antique Collecting & History



*Auction & Show Listings*  
*Club Meetings & Events*  
*Identification & Fakes*  
*Antique Restoration Tips*  
*Museums & Historic Sites*  
*Dealer & Flea Market Ads*

Subscription & Advertising Information:  
 1-800-518-0875 [www.nypa-collector.com](http://www.nypa-collector.com)

# WANT ADS & ANNOUNCEMENTS

Want Ads are FREE to Key Lock & Lantern members on a space available basis, in the KL&L Magazine and the KL&L News. E-mail to [j944wb@aol.com](mailto:j944wb@aol.com) or mail to: John & Marie Brainard, 35 Nordhoff Place, Englewood, NJ 07631

## For Sale

**For Sale:** Railroad Artifacts & Memorabilia: Everything from keys, locks & hardware to china, paper, and more. Jane Silvermail. Website: <http://timestreasures.rubylane.com> or contact by e-mail at [timestreasures@outlook.com](mailto:timestreasures@outlook.com).

**For Sale:** Switch Lamps, Markers & Parts. Website: [JerrysRRStuff.com](http://JerrysRRStuff.com). Phone: 206-778-0386. E-mail: [jerry@JerrysRRStuff.com](mailto:jerry@JerrysRRStuff.com).

**For Sale:** CB&Q RR Special Police badge and CB&Q RR Special Watchman badge. Will consider trade for other RR police badges. Dan Pottebaum. [windsor5207@yahoo.com](mailto:windsor5207@yahoo.com) or call 712-274-8847.

**For Sale:** Keys, Locks, Lanterns, Ephemera, etc. Mostly NE including ME narrow gauge. Jerry Devos, PO Box 376, Towaco, NJ 07082. 862-222-5264. [jdevos99@aol.com](mailto:jdevos99@aol.com).

**For Sale:** Original steam, electric & diesel locomotive builders plates. Currently wide range of N&W diesel plates in stock. E-mail for current list: [rjmuldowney@comcast.net](mailto:rjmuldowney@comcast.net) or call Ron Muldowney at 609-397-0293.

**For Sale:** Old (1850's-1890's) New England railroad paper items. Lots of old name railroads, also Rutland, Central Vermont, Housatonic, Fitchburg, etc. Good to excellent condition. Contact Chuck Hall at 315-824-1674.

**For Sale:** *Railrodiana II: The Official Price Guide for the Year 2011 and Beyond*. Softcover, \$65 + shipping. Railroad Memories. 303-759-1290. [www.railroadmemories.com](http://www.railroadmemories.com).

**For Sale:** Dressel switch lamp, complete, excellent condition, no RR markings, \$250 + shipping. Also have 6-chime Central Vermont whistle & Maine Central counter-top ticket case. Richard Gibbons, 1050 East Brigham Rd, Unit 59, Saint George, UT 84790. [gibbons@infowest.com](mailto:gibbons@infowest.com). (435)-634-8205.

**For Sale:** Disposing of late husband's collection of over 250 railroad lanterns. For a complete list with prices, e-mail: [lotusbuzz@gmail.com](mailto:lotusbuzz@gmail.com).

**For Sale:** Railroad locks, keys and more for sale. For more information, visit website at [www.angelfire.com/biz/toysoldierhq/Railroad.html](http://www.angelfire.com/biz/toysoldierhq/Railroad.html). Kent Sprecher back in the hobby!

## Wanted

**Wanted:** Oil type cab lamp with shade. Contact Aubrey Keller at [akeller@utm.edu](mailto:akeller@utm.edu) or call 731-587-4723.

**Wanted:** New York Westchester & Boston Ry Signal lock and other hard to find signal locks such as Long Island and any I do not have. Contact Jeff Irvin 2524 Big Bear Ln. Indianapolis, IN 46217 - [j.irvin@sbc.global.net](mailto:j.irvin@sbc.global.net) or 317-882-2336

**Wanted:** Switch keys from the L&HR, WVRR, SRR, NY&ERR. Stock Certificates: Wawayanda RR, Mine Hill RR, Pequest & Walkill RR, and Southfield Branch RR. Phil Simms, 8 Still Waters Drive, Campbell Hall, NY, 10916. Call 845-427-5051.

**Wanted:** Looking for small hardware items from the Northhampton & Bath RR such as keys, badges, brass time/tool checks or any other significant small item. Have some interesting items to trade from US Steel roads. Contact Jeff Wolfe at [lobowolf@aol.com](mailto:lobowolf@aol.com).

**Wanted:** Factory marked inspector lamps. Must be complete and in reasonably good condition. Marked globe a plus. Need RDG C&O B&O GCT SOURY (or S RY) Erie Acme model plus others I may not be aware of - Contact Larry Davis, 5110 Hollywood Ave; Shreveport, LA 71109. Phone: 318-469-7825.

**Wanted:** Pennsylvania RR Macbeth #220 pearl glass globes with straight letters 3/4" in height, "PRR" in rectangle. Need clear and red globes. Have traders or cash. Joel Shaw, 31 Sandle Drive, Fairport, NY 14450. Phone: 585-385-3776.

**Wanted:** Delaware Lackawanna & Western keys & locks. Contact Bill Roberts. 8812 Mourning Dove Court, Gaithersburg, MD 20874. E-mail: [whadynrob@gmail.com](mailto:whadynrob@gmail.com) or call 301-977-3025.

**Wanted:** Keys, locks, lanterns, China, builder plates from Oliver Iron Mining and Duluth area railroads. Email: [thornton454@hotmail.com](mailto:thornton454@hotmail.com)

**Wanted:** Keys, locks, lanterns, fly fishing leader boxes, passes, buttons & other from the Denver, South Park & Pacific Ry - Denver, Leadville & Gunnison Ry - Union Pacific Denver & Gulf - Colorado & Southern Ry. Leonard Walmsley, 11044 Claire Circle, Northglenn, CO, 80234 or call 303-429-8674.

**Wanted:** Switch key for the PCRY (Pacific Coast Railway), not PCRR (Penn Central), probably made by Fraim. Contact Steve Mott at 805-544-5339 or by e-mail at [sjmott2359@sbcglobal.net](mailto:sjmott2359@sbcglobal.net).

**Wanted:** Brass burner for a Dressel double wire tall globe railroad lantern & twist off font with burner for a Dietz 39 Vulcan wire frame. Also buying Western Maryland locks, keys, lanterns & globes, and C&PRR items. Joseph G. Hauger, 401 2nd St., Terra Alta, WV, 26764. E-mail address: [whiteoak4@frontier.com](mailto:whiteoak4@frontier.com) or phone 304-789-2229.

**Wanted:** Postcards - Pre-1930 views of US railroad & trolley depots, also related tracks & structures. Tom Hassenmayer, PO Box 3916, Woodbridge, CT, call 203-387-2877, or e-mail [rrtdepotman@yahoo.com](mailto:rrtdepotman@yahoo.com).

## Wanted

**Wanted:** Lanterns, globes, locks, keys, hat badges, RR PD or RR Fire Dept items, Long Island RR & Staten Island Rapid Transit. Bob Myers, 36 Pine Hollow Lane, Greenlawn, NY 11740. 631-757-9540. [robertrail@yahoo.com](mailto:robertrail@yahoo.com).

**Wanted:** Items from the Surry, Sussex & Southampton Ry. Jerry Rakes, PO Box 384, Tappahannock, Va 22560.

**Wanted:** B&O Yale signal locks, cast B&O or Y&T Butler, Charleston, Delphos, Ohio River & Shenandoah divisions. David W. Robinson. [dwrbo@aol.com](mailto:dwrbo@aol.com). 540-820-8998.

**Wanted:** Factory marked ICRR tall lanterns by Defiance, Universal Spinning & Stamping, Prier Brass Co. Globe not important. Good condition & complete. Larry Davis, 5110 Hollywood Ave, Shreveport, LA 71109. 318-469-7825.

**Wanted:** Railroadiana from Huntington & Broad Top Mountain RR (and Coal Co.). PA shortline 1850's-1950's. John Houpp - call 484-268-6698 or e-mail [jdhoup@hotmail.com](mailto:jdhoup@hotmail.com).

**Wanted:** Cast brass fancy back railroad switch locks. Instant cash paid for any lock not already in my collection. I also have a list of approximately 125 rare cast switch locks for sale or trade. Contact Warren at 239-440-4254 (new number) or [warrennyergesjr@hotmail.com](mailto:warrennyergesjr@hotmail.com).

**Wanted:** Lanterns, locks, timetables & passes of all types from Southern Ry, Richmond & Danville, East Tennessee Virginia & Georgia Ry, Washington & Old Dominion, Washington Ohio & Western, Washington & Ohio, Alexandria Loudoun & Hampshire. Contact Andrew Ramsay at [aramsay@ieee.org](mailto:aramsay@ieee.org).

**Wanted:** Diesel locomotive builders plates from the following: Canadian National / Northern Alberta Ry London built or Pointe St. Charles rebuilt GMD-1; Canadian Pacific Montreal Locomotive Works RS-18; former Pacific Great Eastern / British Columbia / BC Rail locomotives; former Northern Alberta Ry / Canadian National GP-9; any EMD NW-5 plate. Contact Corey Panchyshyn at [bcr\\_766@hotmail.com](mailto:bcr_766@hotmail.com).

**Wanted:** Diesel builders plates, especially EL and other northeastern US railroads. Have plates to trade. E-mail: [RBombel@aol.com](mailto:RBombel@aol.com).

**Wanted:** Railroad Horse Car Bells. Will buy one or an entire collection, or have bells to trade. Contact Roger Plaquet at [rplaquet@ciaccess.com](mailto:rplaquet@ciaccess.com) or call 519-354-4538.

**Wanted:** Canadian switch keys. Looking for keys from Canadian roads for my collection and display in a small museum. Will purchase or have some U.S. keys for trade. Contact Brad at [alco1310@sympatico.ca](mailto:alco1310@sympatico.ca)

**Wanted:** LV, D&H, CV switch, signal, mechanical, motive power dept. lock sets. Uniform cap badges. Anything northeast. Chuck Hall. 315-824-1674. E-mail: [mollymussonhall@yahoo.com](mailto:mollymussonhall@yahoo.com).

**Wanted:** Amber (yellow) glass 6.5" diameter lens for a Atlantic City RR (Phila. & Reading) Semaphore used about 1890. This is slightly convex un-fluted that fit in the moving three color frame of a semaphore signal. Also need design of fish tail wood blade to replace my mistaken pointed wood blade. W. G. Cook [PRR6986@Yahoo.com](mailto:PRR6986@Yahoo.com). 518-784-2137 May be interested in finding a proper home for entire signal including CNJ light unit to power it.

**Wanted:** Switch keys from The L&HR, NYS&W, M&E, L&NE, NY&GL, Wharton & Northern, Mine Hill RR and other NJ short lines. Premium price paid for NYS&W "fancy back" cast heart shaped lock. Chip Greiner, P.O. Box 125, Bogota, NJ 07603 email [rrbadges@aol.com](mailto:rrbadges@aol.com).

**Wanted:** Railroad Police Badges and Railroad Police artifacts such as police office signs, old police department photos, early uniforms and patches, etc. Need NYO&W RY Police "Lieutenant" rank badge and will pay premium price or trade. Chip Greiner, P.O. Box 125, Bogota, NJ 07693. Email [rrbadges@aol.com](mailto:rrbadges@aol.com).

**Wanted:** Coat button from West Penn Railways (W.P. Ry), southwest Pennsylvania trolley system. Will pay good or trade other trolley line buttons. Also, early PRR buttons with fancy letters. Jim Chew, 900 N. 4th Street, Jeannette, PA 15644, (724) 523-6889.

**Wanted:** Photo of NY State Railways Syracuse Lines car #1024. Also any photos of Syracuse trolleys on Irving Ave and around Syracuse University. Also, globe for an SG&L Lake & River lantern, large 6x6 "government" style or "No.7" style. Dave Hamilton. [transportsim@aol.com](mailto:transportsim@aol.com). 518-439-8392.

## For Trade

**For Trade:** LC&N Co Casey lantern, 6" Penna Co globe, D&RGRR cast lock by Dayton, SRRR, GF&ARY, C&A Ry tapered keys, T&OC dessert knife by R&B. I collect southern lower Michigan and also want 6" colored globes. Walter Sulowski at [walter-sulowski@msn.com](mailto:walter-sulowski@msn.com) or 313-295-7306.

**Want Your Message to Get More Attention?**  
Upgrade to a Display Ad for as little as \$15  
Contact Dave Hamilton: [transportsim@aol.com](mailto:transportsim@aol.com)

# KEY LOCK & LANTERN

## Index on Computer CD

Index of all KL&L Magazines from Issue #1 through Issue #151 in searchable Acrobat (PDF) format. \$7.95 postpaid. Contact:

Marie Brainard  
35 Nordhoff Place  
Englewood, NJ 07631-4810

## Membership Brochures

Are Available in PDF Format for Printing & Distribution at Railroadiana Shows, Historical Museums, Railroad Club Meetings & Other Events

Download the Current Version at  
[www.klnl.org](http://www.klnl.org)



All submissions for the KL&L magazine, news items for the digital KL&L News & general inquiries should be sent to:

KL&L President & Editor  
David Hamilton  
244 Elm Ave  
Delmar, NY 12054  
E-mail: [transportsim@aol.com](mailto:transportsim@aol.com)

Send membership applications, dues payments, address changes & want ads to:

KL&L Chairman John Brainard &  
VP-Membership Marie Brainard  
35 Nordhoff Place  
Englewood, NJ 07631  
E-mail: [j944wb@aol.com](mailto:j944wb@aol.com)

Join or Renew Your  
**KEY LOCK & LANTERN**  
Membership Online at  
[www.klnl.org](http://www.klnl.org)

### KL&L Membership Form (2018-2019 Membership Year)

Please make check or money order payable to Key, Lock & Lantern, Inc. and forward to: Marie Brainard, KL&L Membership, 35 Nordhoff Place, Englewood, NJ 07631-4810

Name \_\_\_\_\_

Representing (business or museum, if applicable) \_\_\_\_\_

Address \_\_\_\_\_

City \_\_\_\_\_ State/Prov \_\_\_\_\_ Zip/Mail Code \_\_\_\_\_

Phone \_\_\_\_\_ E-mail \_\_\_\_\_

Basic membership at \$30 per year (1st Class mailing in USA) or \$40 per year (non-USA).....\$ \_\_\_\_\_

Contributing membership at \$35 per year, to help support KL&L(1st Class mailing in USA)..... \$ \_\_\_\_\_

Additional family members at \$4 per person (only one magazine is sent per family).....\$ \_\_\_\_\_

Additional Donation.....\$ \_\_\_\_\_

Enclosed is my check / money order payable to Key Lock & Lantern, Inc. for.....\$ \_\_\_\_\_

Membership in KL&L includes 4 issues of the magazine, and the annual membership period begins in July of each year. New members joining before April will receive all previously published magazines for the year, and will be due for renewal in July. New members joining in April, May or June will have their dues applied to the next membership period, beginning with the Jul/Aug/Sep issue, unless otherwise requested.

# 46TH ANNUAL KEY LOCK & LANTERN CONVENTION

June 1-3, 2018, Scranton, PA

## KL&L Member Registration Form

**Note: This form is for KL&L Members. If your dues were current at the last convention or you have joined/renewed since then, you are up to date. Others please use non-member form.**

The convention will once again be held at the Radisson Lackawanna Station Hotel in downtown Scranton, PA. Informal room-hopping begins on the evening of Friday, June 1st. The Transportation History Expo will be held in the hotel banquet facility on Saturday, June 2nd, with setup & early admission at 8:00am and regular opening at 9:30am. Exhibits and/or items for sale/trade must be related to railroad, transportation & industrial history. No misrepresented or unidentified reproductions allowed. The KL&L membership meeting & auction will be held at 11:00am. A box lunch for members & table holders is available for purchase, and the hotel restaurants will be open. The show closes at 2:30pm. At 5:00pm, a banquet dinner and railroad history programs will be held in the hotel's Platform Lounge. On Sunday, June 3rd, a KL&L excursion train on the former DL&W main will run from behind the hotel to Tobyhanna, PA. Departure is at 10:00am, with a lunch stop (details to be announced) at Tobyhanna, and arrival back at Scranton between 4pm-5pm. This trip will utilize equipment owned by the freight railroad, so there is no onboard food service and climbing steps is required. We will have power to the coach this year and several photo/museum stops are planned. The Radisson Lackawanna Station Hotel special rate is \$124 per night + tax. The hotel is located at 700 Lackawanna Ave, Scranton, PA, 18503. Call 570-342-8300 or 866-715-7836 and ask for the Key, Lock & Lantern rate. An online reservation page will be available soon - watch the KL&L website for a link. You may register for the various convention events online at [www.klnl.org](http://www.klnl.org), or use the attached form. Visit the KL&L website for more details.

Name: \_\_\_\_\_ Spouse/Other: \_\_\_\_\_

Address: \_\_\_\_\_

Phone: \_\_\_\_\_ Cell Phone: \_\_\_\_\_

E-Mail: \_\_\_\_\_

**Note: Each member must register individually & may include spouse/companion/family members at \$5 per person. Others must register separately or at the door. Please see our cancellation policy at [www.klnl.org](http://www.klnl.org).**

Registration Fee for Member & Family Members (\$5 each)..... \_\_\_\_\_ x \$5 each = \_\_\_\_\_  
Exhibit/Sales Tables (6-foot)..... \_\_\_\_\_ x \$25 each = \_\_\_\_\_  
Early Admission (Allows non-table holders entry to show during setup hours)..... \_\_\_\_\_ x \$15 each = \_\_\_\_\_  
Saturday Box Lunch (for members/family only)..... \_\_\_\_\_ x \$10 each = \_\_\_\_\_  
Saturday Night Buffet Dinner..... \_\_\_\_\_ x \$39 each = \_\_\_\_\_  
Sunday Train Coach Seat..... \_\_\_\_\_ x \$45 each = \_\_\_\_\_  
Sunday Train Caboose Seat (see note below)..... \_\_\_\_\_ x \$90 each = \_\_\_\_\_  
Sunday Train Observation Car Seat (see note below)..... \_\_\_\_\_ x \$110 each = \_\_\_\_\_

**\*\*\* Note: Caboose & Observation Car Seating is Very Limited - Register online for current availability or confirm by calling Dave Hamilton at 518-439-8392 before mailing in your registration form.\*\*\*\***

Please make checks or money orders payable to **Key, Lock & Lantern, Inc.** and mail to: **Marie Brainard, 35 Nordhoff Place, Englewood, NJ 07631-4810.** If you have any questions, email John & Marie Brainard at [j944wb@aol.com](mailto:j944wb@aol.com) or call 201-569-9758 between 7 and 9 pm EST any evening, or Dave Hamilton at [transportsim@aol.com](mailto:transportsim@aol.com) or 518-439-8392.

# 46TH ANNUAL KEY LOCK & LANTERN CONVENTION

June 1-3, 2018, Scranton, PA

## Non-Member Registration Form

*Non-Members are welcome to attend the convention for a special registration fee that includes an "associate" membership in KL&L which allows participation in all events, but does not include KL&L publications.*

The convention will once again be held at the Radisson Lackawanna Station Hotel in downtown Scranton, PA. Informal room-hopping begins on the evening of Friday, June 1st. The Transportation History Expo will be held in the hotel banquet facility on Saturday, June 2nd, with setup & early admission at 8:00am and regular opening at 9:30am. Exhibits and/or items for sale/trade must be related to railroad, transportation & industrial history. No misrepresented or unidentified reproductions allowed. The KL&L membership meeting & auction will be held at 11:00am. A box lunch for members & table holders is available for purchase, and the hotel restaurants will be open. The show closes at 2:30pm. At 5:00pm, a banquet dinner and railroad history programs will be held in the hotel's Platform Lounge. On Sunday, June 3rd, a KL&L excursion train on the former DL&W main will run from behind the hotel to Tobyhanna, PA. Departure is at 10:00am, with a lunch stop (details to be announced) at Tobyhanna, and arrival back at Scranton between 4pm-5pm. This trip will utilize equipment owned by the freight railroad, so there is no onboard food service and climbing steps is required. We will have power to the coach this year and several photo/museum stops are planned. The Radisson Lackawanna Station Hotel special rate is \$124 per night + tax. The hotel is located at 700 Lackawanna Ave, Scranton, PA, 18503. Call 570-342-8300 or 866-715-7836 and ask for the Key, Lock & Lantern rate. An online reservation page will be available soon - watch the KL&L website for a link. You may register for the various convention events online at [www.klnl.org](http://www.klnl.org), or use the attached form. Visit the KL&L website for more details.

Name: \_\_\_\_\_ Spouse/Other: \_\_\_\_\_

Address: \_\_\_\_\_

Phone: \_\_\_\_\_ Cell Phone: \_\_\_\_\_

E-Mail: \_\_\_\_\_

*Each registered "associate" member is entitled to three additional registrations for family members or table helpers. Others must register separately or at the door. Please see our cancellation policy at [www.klnl.org](http://www.klnl.org).*

Registration Fee w/ "Associate" Membership..... 1 x \$15 each = \$15  
Registration Fee for Family or Helper (limit of 3)..... \_\_\_\_\_ x \$7 each = \_\_\_\_\_  
Exhibit/Sales Tables (6-foot)..... \_\_\_\_\_ x \$25 each = \_\_\_\_\_  
Early Admission (Allows non-table holders entry to show during setup hours)..... \_\_\_\_\_ x \$15 each = \_\_\_\_\_  
Saturday Box Lunch (limit of 4)..... \_\_\_\_\_ x \$10 each = \_\_\_\_\_  
Saturday Night Buffet Dinner..... \_\_\_\_\_ x \$39 each = \_\_\_\_\_  
Sunday Train Coach Seat..... \_\_\_\_\_ x \$45 each = \_\_\_\_\_  
Sunday Train Caboose Seat (see note below)..... \_\_\_\_\_ x \$90 each = \_\_\_\_\_  
Sunday Train Observation Car Seat (see note below)..... \_\_\_\_\_ x \$110 each = \_\_\_\_\_

**\*\*\* Note: Caboose & Observation Car Seating is Very Limited - Register online for current availability or confirm by calling Dave Hamilton at 518-439-8392 before mailing in your registration form.\*\*\*\***

Please make checks or money orders payable to **Key, Lock & Lantern, Inc.** and mail to: **Marie Brainard, 35 Nordhoff Place, Englewood, NJ 07631-4810.** If you have any questions, email John & Marie Brainard at [j944wb@aol.com](mailto:j944wb@aol.com) or call 201-569-9758 between 7 and 9 pm EST any evening, or Dave Hamilton at [transportsim@aol.com](mailto:transportsim@aol.com) or 518-439-8392.