



# KEY LOCK & LANTERN NEWS



Jul/Aug 2016

Issue No.40

*The Bi-Monthly Digital Supplement to Key Lock & Lantern Magazine*



**Beeliners Return  
to the Berkshires**

**Key Lock & Lantern  
Annual Convention**

**Railroad Memories  
Catalog Auction**



# KEY LOCK & LANTERN NEWS



The Bi-Monthly Digital Supplement to Key Lock & Lantern Magazine  
WWW.KLNL.ORG

**Jul/Aug 2016**

**Issue #40**

From the President's Desk .....	3
Railroad Event Calendar.....	3
2016 Key, Lock & Lantern Convention.....	4
Railroad Memories Auction.....	6
Beeliners in the Berkshires.....	8
Catskill Mountain Railroad Resumes Service.....	11
Adirondack Scenic RR Fights Abandonment.....	11
California State Railroad Museum Open House.....	12
Railroad Historical Society Conventions.....	24
Want Ads & Announcements.....	26
Membership Application .....	28
<b>KL&amp;L News Editor.....</b>	<b>David Hamilton</b>
<b>Production Facilities.....</b>	<b>NY-PA Collector Magazine</b>

The Key, Lock & Lantern News is published bi-monthly as a digital supplement to the quarterly Key, Lock & Lantern magazine. Recipients may repost or forward complete and unmodified copies of this newsletter to other hobbyists and websites, but its content may not otherwise be copied or distributed without the permission of the KL&L Board of Trustees. Copyrights are held by the respective authors and photographers. Excerpts of news items may be published with the credit line "Key, Lock & Lantern News"

Annual membership dues for Key, Lock & Lantern are \$30 for residents of the USA, and \$40 for outside of the USA (by money order or electronic payment in US funds). Members receive four issues of the quarterly KL&L magazine, delivered via first class mail. Memberships for additional family members are \$5 each (only one magazine is sent per family). Applications for membership & address changes should be forwarded to the VP-Membership at the e-mail address listed at right. Online membership forms and dues payment via Paypal are available at [www.klnl.org](http://www.klnl.org).

Contributions of articles, photos, and news may be forwarded to the editor at the e-mail address listed at right. Hard copy articles should be written on 8 1/2 x 11" paper, and typed or neatly printed. Photos should be sent with a caption card attached which includes the contributor's name, phone number, and description. Photocopies of advertising and supply catalogs are acceptable. The submission of material in digital format is preferred, with text files in DOC, TXT, or PDF format, and images in JPG, TIF, BMP or GIF format. Digital files may be sent by e-mail or on a computer CD or flash drive. Please contact the editor regarding optimum file sizes and formats.

By submitting material to Key, Lock & Lantern, the contributor grants permission for use in any edition of the KL&L magazine, digital newsletter, websites, and other publications. All material will be retained by KL&L for future use, unless the contributor specifically requests that it be returned, and includes a suitable, self-addressed, stamped envelope. Current deadlines are listed in the Key, Lock & Lantern Advertising Guide, which is available on the KL&L website at [www.klnl.org](http://www.klnl.org), or by contacting the editor.

## Key, Lock & Lantern

A non-profit membership corporation dedicated to the preservation of transportation history and railroad memorabilia

*The mission of Key, Lock & Lantern is to gather and publish information on the history of the transportation industry, and to support the preservation of railroad artifacts. KL&L members have an interest in all aspects of railroad & transportation history, from research and preservation projects to the conservation and restoration of all types of historical memorabilia. Originally formed in 1966, Key, Lock & Lantern, Inc. was officially incorporated in 1988 as a non-profit, educational, membership corporation in the State of New Jersey, under the provisions of Section 501(c)(3) of the United States Internal Revenue Code. Membership is open to anyone with an interest in transportation history and in achieving the goals of the organization.*

### Officers & Trustees

#### Chairman of the Board

John Brainard  
j944wb@aol.com

#### President & Editor

David Hamilton  
transportsim@aol.com

#### VP- Membership / Treasurer

Marie Brainard  
j944wb@aol.com

#### Secretary

Marie Brainard (Acting)

#### Chaplain

Chip Greiner

#### Counsel

Jeremy Tuke

#### Historian

Peter Gores

#### Trustees at Large

Cal Bulman, Lyman Gray, Patti Gray, Sam Lombardi, Joel Shaw, Sam Ferrara, Mike Sullivan, Phil Simms, George Shammass, Leonard Gordy, Bob Lipman, Randy Bushart

[www.klnl.org](http://www.klnl.org)



For Current News  
"Like" KL&L on

facebook

## KL&L Convention Shows that Interest in Historic Preservation is Alive & Well

Even though I witness it each year, it still never ceases to amaze me when I see the quality of the displays arranged by KL&L members at the annual convention. This year was no exception, with a variety of extensive exhibits of artifacts from different eras and categories. It was difficult to cast a vote for only one member for the Best in Show award. A big “thank you” goes out to everyone who put in the effort to bring a display or memorabilia for sale at this year’s show.

When working with the committee in planning the 2016 convention, I was a little nervous about reserving an entire banquet room for the Saturday dinner and chartering a train for an all-day trip. There was no need for concern though, as both events eventually sold out and we had one of the most successful conventions in recent years. Even in today’s digital world, there is still obviously a strong interest in historic preservation. No matter how many railroad Facebook groups you can join, there is still something about getting together for the various convention activities that can’t be replaced.

While most of us came home with something new for our collections (or were able to pass along something to a new caretaker), and we enjoyed the programs and train ride, it is the opportunity to share knowledge with fellow members that is the best part of the weekend. I always learn something new at the convention, and enjoy “shooting the bull” with fellow history buffs and railroad enthusiasts. For those regular participants who couldn’t make it this time, you were certainly missed, and we hope to see you next year.

The mission of Key, Lock & Lantern is to share information about transportation history and assist its members in their individual historical preservation efforts. Our main tools for accomplishing this mission are the annual convention and our publications. Your support as a member is essential to making these things happen. Without everyone’s contribution of knowledge and funding, we would not exist.

Membership renewal forms went out with the last printed magazine and are always available online. If you have not yet renewed your membership, please take a moment to do so. If you are reading this digital newsletter for the first time and you like what you see, please consider joining KL&L. While this publication is freely distributed, the costs of production are paid for by our membership dues and our advertising sponsors. Key, Lock & Lantern needs you as a member, in order to continue providing these resources (and members also receive our printed magazine and exclusive access to digital back issues). Join or renew today!

It won’t be long before tourist train season is over and the winter train shows will begin. I look forward to seeing KL&L members at some of the upcoming auctions and shows. In the meantime, keep those contributions of articles & photos coming in. As always, thanks for everyone’s support.

*Dave Hamilton, KL&L President & Editor*

## Railroad Event Calendar



**Upcoming historical society conventions, special events, railroadiana shows & auctions. Listings subject to change. Check show web sites before traveling and visit [www.klnl.org](http://www.klnl.org) for updates. See submission guidelines at the end of the calendar.**

- Sep 9-10 Indianapolis, IN** - Hoosier Traction Meet.  
Clarion Waterfront Hotel.  
Info: [www.hoosiertractionmeet.com](http://www.hoosiertractionmeet.com).
- Sep 10-11 Buffalo, NY** - Central Terminal Train Show at the terminal.  
Info: [www.buffalocentralterminal.org](http://www.buffalocentralterminal.org).
- Sep 10 Perris, CA** - Orange Empire Railway Museum Fall Swap Meet..  
Info: [www.oerm.org](http://www.oerm.org).
- Sep 11 Denver, CO** - Railroadiana Consignment Auction. Railroad Memories.  
Info: [www.rmmemories.com](http://www.rmmemories.com)
- Sep 15-18 Buffalo, NY** - Baltimore & Ohio Railroad Historical Society Convention.  
Info: [www.borhs.org](http://www.borhs.org).
- Sep 16-30 Lone Jack, MO** - Online railroadiana auction.  
Dirk Soulis Auctions.  
Info: [www.dirksoulisauctions.com](http://www.dirksoulisauctions.com).
- Sep 16-18 Moberly, MO** - Wabash Railroad Historical Society Annual Meeting  
Info: [www.wabashrhs.org](http://www.wabashrhs.org).
- Sep 16-18 Mount Morris, NY** - Erie Lackawanna Historical Society Convention  
Info: [www.erielaackhs.org](http://www.erielaackhs.org).
- Sep 17 Phoenixville, PA** - Railroadiana Auction.  
Maurer Auctions  
Info: [www.maurerail.com](http://www.maurerail.com).
- Sep 21-24 Palm Springs, CA** - Southern Pacific Historical & Tech Society Convention  
Info: [www.sphts.org](http://www.sphts.org).

*Continued on Page 26*

### On the Front Cover:

The Berkshire Scenic Railway Museum’s new Hoosac Valley tourist train features Beeliners on the New York Central North Adams Branch. Dave Hamilton photo.

# Railroad Historians & Collectors Enjoy a Full Weekend of Events at the 2016 KL&L Convention



Since the annual Key, Lock & Lantern Convention moved from Albany to Utica, NY in 2014, the event has grown from its traditional railroading show & dinner to a full weekend of activities. This year was no exception, with activities ranging from Friday antique hunting to an all-day chartered train excursion on Sunday. The almost 100 railroad historians and collectors who attended had plenty to do and see over the weekend of June 3rd through 5th.

Many KL&L members arrived in the area as the sun came up on Friday, to be among the first to enter the showfields at the nearby Madison-Bouckville June Antique Show. There were several railroading “finds” reported at the show, which

*The Key, Lock & Lantern Adirondack Express train on the Adirondack Scenic Railroad rests in Utica Union Station after its run to Big Moose. Dave Hamilton photo.*

is a preview of the big event that takes place in August. Other KL&L members took advantage of the perfect weather to do some railfanning along the former New York Central main through the Mohawk Valley.

By mid-afternoon, most exhibitors had arrived and were beginning to unpack in their rooms at the Hotel Utica. With many members bringing a large selection of new material, many “parking lot deals” took place before the boxes even made it to the luggage carts. While room hopping has been less convenient in the new venue, Friday night is still the best time to scoop something up before the main show.

Before dinner, a group of KL&L members walked across the street to the New York State office building, to attend a rally in support of the Adirondack Scenic Railroad. As reported in the last issue of the *KL&L News*, the state plans to abandon the north end of the line to Lake Placid, which would result in the discontinuance of trains on that section. A large crowd turned out to hear local politicians and business leaders voice their support of the railroad and their opposition to the state’s plan. Following the rally, several groups of KL&L members and convention exhibitors met for dinner at local restaurants.

In the evening, the meeting of the Key, Lock & Lantern Board of Trustees was held, with all officers and trustees



*The view of downtown Utica, NY from KL&L Convention headquarters at the Hotel Utica. Dave Hamilton photo.*

*Continued on Page 5*

# 2016 KL&L Convention

Continued from Page 4

renominated for the 2016-2017 membership year, and the new nomination of Chip Greiner for the position of Chaplain considered. The minutes of the previous board and general meetings, and the reports of the treasurer and the president were reviewed and approved.

On Saturday morning, KL&L members who were staying at the Hotel Utica enjoyed an excellent breakfast buffet before preparing for the show. Once again this year, the Saranac Room was filled with exhibitors and over a dozen



*The KL&L Railroad History Expo included many excellent exhibits by KL&L members. Dave Hamilton photo.*



*KL&L members attended a Friday afternoon rally in support of the Adirondack Scenic's efforts to restore train service between Utica & Lake Placid. Dave Hamilton photo.*

tables were set up in the adjacent mezzanine. It was obvious each time a new exhibitor or someone with new stock began to unpack, as the crowd looked like a swarm of bees around a fruit stand. And this was even before the official opening!

The Railroad History Exposition opened to non-members at 10am, with a large crowd of local collectors and railroad buffs lining up to see the exhibits and look through dozens

of tables of railroadiana offered for sale or trade. Several collectors were in the process of downsizing, so there was plenty of material that had not been seen at recent shows, including a large collection of keys, a variety of lanterns, and a huge selection of parts.

Of course, the Railroad History Exposition is more than a railroadiana show - Key, Lock & Lantern members present museum-quality exhibits about transportation and industrial history, and this year's convention included a variety of



*Many exhibits explored specific topics, including this excellent Penn Central display. Dave Hamilton photo.*



*KL&L members found plenty of new material for sale at this year's Railroad History Expo, much of which changed hands before the show opened. Dave Hamilton photo.*

material. From displays of lanterns and lamps of all varieties, to memorabilia from the Penn Central railroad, every era and aspect of collecting was represented. Members who enjoyed Chip Greiner's recent article about NYO&W police badges were able to take a look at them in person, along with other scarce railroadiana that has been featured in past issues.

While there were many excellent exhibits, once attendees had cast their votes, the "Best in Show" award went to new

Continued on Page 13

# A Wide Selection of Railroadiana is Sold in Railroad Memories Auction

The Railroad Memories catalog & online auctions always include a nice selection of memorabilia, with a focus on western roads, and the recently held sale #95 was no exception. As usual, scarce railroadiana from Colorado was the star of the show, but other lines from around the country were well represented as well. Auction #96, which closes on September 11th, has many more excellent lots, so it will be interesting to see the results of that sale. *All photos, prices, and descriptions courtesy of Railroad Memories Auctions. Prices do not include buyers premiums or shipping.*



*A \$320 bid was need to purchase this Railway Express Agency Police badge by Meyer & Wenthe of Chicago.*



*A nicely cleaned Northern Pacific Armspear lantern with "NPRY" markings on the frame and a hard to find red cast "NPRR Safety Always" globe sold for a \$420 bid.*



*This example of the classic J.C. Deagan dining car chime was missing its mallet, but still brought a \$260 bid.*



*A high bid of \$120 took home this Great Northern cap with an embroidered patch and nickel "Brakeman" badge with rope braid & GN buttons, made by Carlson & Company.*

*Continued on Page 18*



# RAILROAD MEMORIES

1903 S. NIAGARA ST. , DENVER, CO 80224

303-759-1290

Announcing Auction 96 Closing September 11, 2016. With 60 lanterns, 96 keys, china, demitasse collection, amazing Advertising items, silver, books, C&S Number Plate & 5 Chime whistle, cap badges, early passes & paper and so much more. Printed catalogs are available for \$20 each and include a complete prices realized list. Auction is hosted on my website with live on line up to date bidding as well as multiple photos of each of the pieces. Remember I guarantee authenticity on everything I sell. Website will be posted in August so if you are not already a registered bidder be sure to sign up now. Any questions don't hesitate to contact me.



ADVERTISING, BRASS TOP LANTERNS, C&S NUMBER PLATE



CHINA INCLUDING SEVERAL PIECES OF MIMBRENO, DEMITASSE COLLECTION, TEAPOTS AND MORE



LOCKS, PANCAKE, FANCY CAST & PANEL CAST

500 PLUS LOTS!!

EARLY KEYS



PASSES

WWW.RAILROADMEMORIES.COM



# BEELINERS RETURN TO THE BERKSHIRES

On March 25, 1953, the final run of the “Beeliner” on the New York Central’s branch from Pittsfield arrived at North Adams, MA. When the Budd RDC car pulled into Union Station for the last time, over 100 years of passenger service on the line came to an end. Over the next few decades, freight traffic also declined, resulting in the abandonment of most of the branch and the sale to the Boston & Maine of the remaining section to Adams in 1981. Since that time, the North Adams Branch has been a quiet industrial spur, served by the occasional local freight switcher of B&M successor Pan Am Railways.

Local residents no doubt had to look twice this summer, to be certain that it wasn’t a ghost, when a Beeliner returned to the Berkshires after an absence of over 60 years. Following a year of track rehabilitation by the State of Massachusetts and thousands of hours of equipment restoration work by volunteers, the Berkshire Scenic Railway Museum’s new Hoosac Valley train service began operations between North Adams and Renfrew Station in Adams, MA.

The return of the Beeliner to North Adams was the positive outcome of an unfortunate situation. Following the non-renewal of the museum’s contract with shortline Housatonic Railroad, its popular excursion trains between Lenox and Stockbridge, MA were discontinued in 2012. While short train rides continue to be offered on the yard tracks at the Lenox museum, BSRM volunteers have actively worked to reestablish a longer trip. It was with the support of state and local officials, and the cooperation of Pan Am Railways that the museum was able to turn a lemon into lemonade.

*Beeliners returned the North Adams Branch in 2016, in the Berkshire Scenic Railway Museum’s new Hoosac Valley Service, shown arriving at Renfrew. Dave Hamilton photo.*

After several years of work, the Hoosac Valley train made preliminary demonstration runs over Columbus Day weekend in 2015, before opening for regular service in the 2016 season. A refurbished coach provides a ticket office and small museum at North Adams, until a proposed recreation of North Adams Union Station is built. The Beeliner operates on a one hour round trip to Renfrew Station, just outside of Adams. Future plans call for an extension into the heart of

*Continued on Page 10*



*A coach and caboose provide a temporary home for the BSRM ticket office and museum at North Adams, until a recreation of the depot is built. Dave Hamilton photo.*



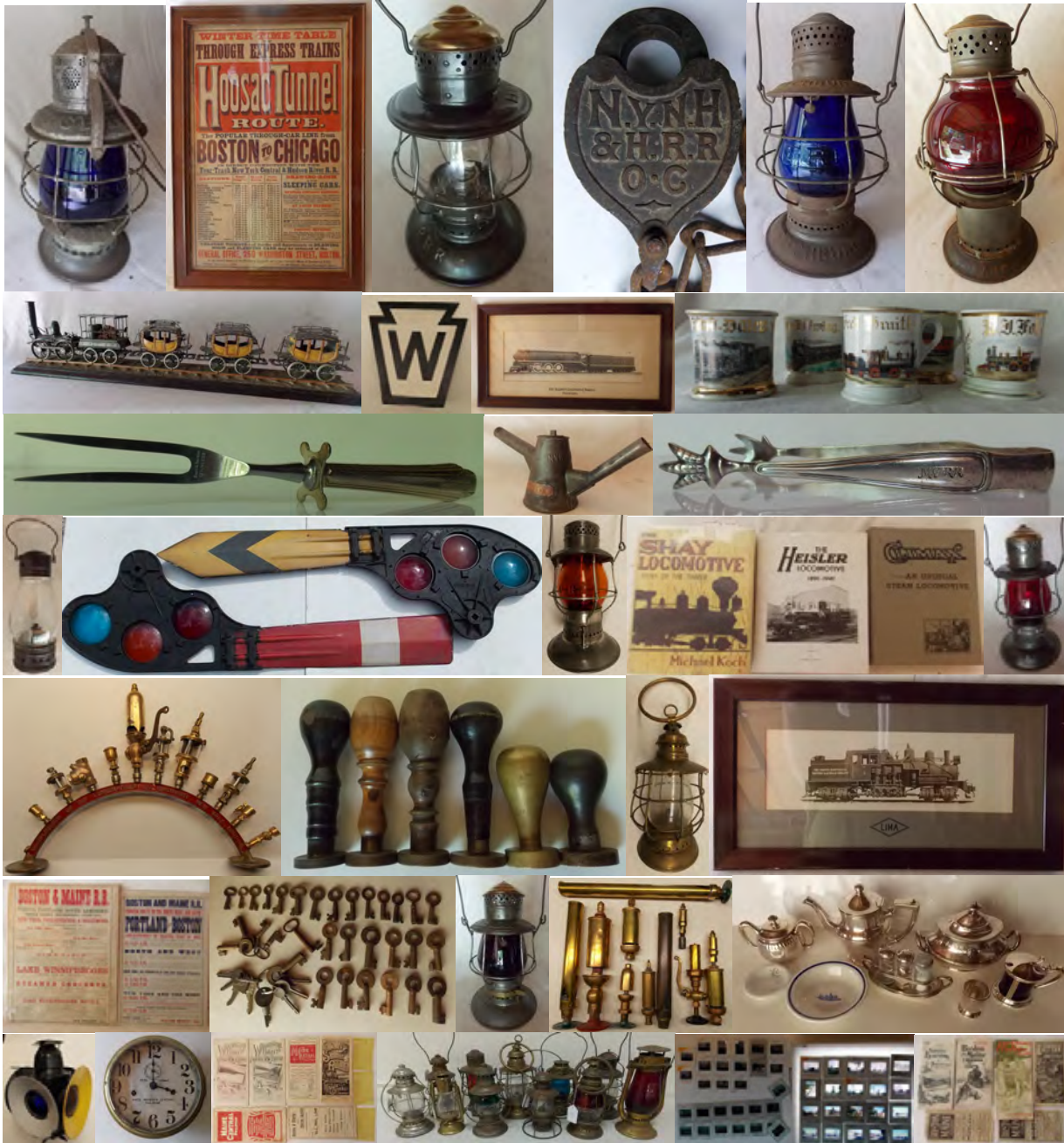
# Railroadiana Auction – October 1, 2016 – Brookline, NH

Auction information including photos - [www.tagtown.net](http://www.tagtown.net)

Scott Czaja - Sales Manager (978) 779-2904

*an auction by a collector for collectors*

Quality Lanterns & Lamps, China & Silver, Slides from the 1960s, Keys, Whistles, Builder Photographs, Post Cards – *pre-auction box lots for attendees start @ 10:00 am EST*



Phase 1 Ronald Santurjian Collection – Start of Alan Thomas steam slides (1950s) & Books  
Boston & Maine, Maine Central & Rutland Dining Car China & Silver

Next Auction – January 14, 2017 – All items in this auction can be shipped  
Now on **LiveAuctioneers.com** - We also accept absentee bids via: email & mail  
Quality consignments are welcome for future sales - call Scott or email: [sczaja@hotmail.com](mailto:sczaja@hotmail.com)

# Beeliners in the Berkshires

Continued from Page 8

town, to a new visitor center and station that will provide a link to the rail trail on the adjoining abandoned section of the railroad.

When the museum began planning this new service, it seemed natural to recreate the “Beeliner” train that last ran on the branch. New York Central fans and purists probably won’t mind that the BSRM’s Budd car was actually built in 1955 for the Boston & Maine Railroad, where it likely made



Passengers board the restored B&M RDC car at North Adams, MA for a one hour roundtrip on a former NYC branch to Renfrew Station in Adams. Dave Hamilton photo.



The Hoosac Valley train passes through historic Southview Cemetery in North Adams, MA. Dave Hamilton photo.

trips to North Adams through the Hoosac Tunnel. Riding an RDC on a New England branch line is an experience which makes those details seem unimportant.

At a leisurely 10mph, passengers have plenty of time to enjoy the passing scenery, which consists of imposing mountains (the Hoosac Tunnel is only a short distance away on the B&M mainline), meandering rivers, and historic buildings. Enthusiasts of modern railroad operations have the opportunity to view current Pan Am freight customers,

and entertaining narration by BSRM’s onboard volunteers provides extensive background information about railroading and local sights. Numerous round trips and slow speeds also make it easy to both ride the train and chase other runs.

With a relatively short ride through the scenic countryside and historic railroad equipment, this trip is an excellent one to bring along family members, while remaining enjoyable for serious railroad history buffs. Trains operate on weekends




Chasing the train is easy, with slow speeds, stops to flag crossings, and several round trips. Dave Hamilton photo.



Displays about local railroad history are housed in a remodeled coach in North Adams. Dave Hamilton photo.

through the middle of October, with two morning and two afternoon departures. For schedules, ticket information, and directions, visit the Berkshire Scenic Railway Museum’s website at [www.berkshirescenicrailroad.org](http://www.berkshirescenicrailroad.org). The website also contains information about the group’s other activities, including the museum site at Lenox, MA, which is also worth a visit. All aboard the Beeliner in the Berkshires!

 For Additional Photos, Visit the KL&L Page on Facebook. Use the link at [www.klnl.org](http://www.klnl.org).

# Catskill Mountain RR Resumes Service

After several years of controversy and legal battles, tourist train service on the Catskill Mountain Railroad came to an end in May of this year, when owner Ulster County declined to renew the railroad's lease. However, as reported in *KL&L News* #36, a compromise plan was arranged that allowed for trackage to remain in place and the proposed conversion to a rail trail to be reviewed. As a result, bids were solicited for the continued operation of tourist trains, and the Catskill Mountain was again selected as operator of the line.

The removal of the railroad's equipment from its yard and shop facility and the May shutdown resulted in delays to the resumption of service, but trains began running again during August, on both the Kingston and Phoenicia sections of the line. Fall foliage trains will be operated this season, along with the Polar Express theme train, the popularity of which no doubt contributed to the change in the position of Ulster County officials.

However, the debate over the future of the line, which runs from the Hudson Valley at Kingston, NY into the heart of the Catskill Mountains, is not over. There are still plans to convert the middle section of the railroad into a recreational trail, and the future of the Phoenicia operation is still uncertain. The Rail Explorers rail bike tour company has



been awarded the right to operate on the west end of the line next year, and it is unclear if the Catskill Mountain railroad will share the rails or will only run out of Kingston in 2017.

In the meantime, passengers can once again enjoy a ride through the scenic Catskills on historic railroad equipment. For current schedules and information, visit the Catskill Mountain Railroad website at <http://cmrrevents.com>.

# Adirondack Scenic RR Fights Abandonment of Line from Tupper Lake to Lake Placid



As reported in *KL&L News* issue #39, the New York State Department of Transportation recently announced a plan for the conversion of a segment of its Remsen - Lake Placid rail corridor into a recreational trail. The tourist train operated by the Adirondack Scenic Railroad between Lake Placid and Saranac Lake would be discontinued and the recently rebuilt trackage would be dismantled, with a trail constructed in its place. The "compromise" plan also calls for the continuation

of train service on the south end of the line from Tupper Lake to Utica, and the rehabilitation of the railroad between Tupper Lake and Big Moose.

Prior plans called for restoration of the entire line to Lake Placid, but work by the state in achieving this goal has been slow. Although the tourist train operation has been a success, its full potential cannot be realized until the rehabilitation of the line is complete. With the middle of the route dormant for many years, local snowmobile clubs have lobbied for the removal of the tracks, and the new plan is the result of the political pressure by these interests.

At a recent rally at the state office building in Utica, many state and local officials expressed their opposition to the plan and gave their support to the Adirondack Scenic Railroad's position that the entire line should remain intact. While the debate continues, the railroad has filed a lawsuit to prevent the state from taking any action toward the removal of the track structure. A legal fund has been established to support the railroad's efforts, and more information is available on the Adirondack Scenic Railroad's website and Facebook page at [www.adirondackrr.com](http://www.adirondackrr.com).



For Additional Photos, Visit the KL&L Page on Facebook. Use the link at [www.klnl.org](http://www.klnl.org).

# California State Railroad Museum to Hold Open House for Prospective Volunteers

Fascinated by railroading history? Interested in working on a train? California State Parks, the California State Railroad Museum and Old Sacramento State Historic Park (SHP) are now recruiting adults (18 or older) who are interested in volunteering to help communicate the West's fascinating heritage of railroading and the California Gold Rush. For those interested, a special, drop-in Volunteer Open House is scheduled for Saturday, September 10, 2016 from 1 to 3 p.m. in the Stanford Gallery located at 111 I Street in Old Sacramento (next door to the California State Railroad Museum).

Volunteer applications are being accepted now through September 14 and will be followed by an interview process. The next Docent Training session is scheduled to begin on



or giving talks to community organizations. New docents can choose to work in the Museum interacting with visitors from around the world, working in the railroad restoration shops on rare and unique railroad equipment, work on the Sacramento Southern Railroad, or other jobs in this dynamic and fun environment.

Volunteering represents a serious commitment of at least 84 volunteer hours annually, but the hours are flexible and the rewards can be tremendous. Docents receive perks such



as a discount at the Museum Store, preferential and/or early access to selected special events, and the pride of working at North America's finest and most visited railroad museum.

Volunteer applications can be downloaded at [http://www.parks.ca.gov/?page\\_id=25583](http://www.parks.ca.gov/?page_id=25583) and completed forms can be emailed to [allaboard.csrmm@parks.ca.gov](mailto:allaboard.csrmm@parks.ca.gov) or mailed or delivered to the Volunteer Coordinator, California State Railroad Museum, 111 I St., Sacramento, CA 95814. For more information, please call 916-445-0269 or visit the museum website at [www.californiarailroadmuseum.com](http://www.californiarailroadmuseum.com). *News & photos courtesy of California State Railroad Museum.*



September 26 and continue into early November. Each year, more than 500 men and women volunteer for the California State Railroad Museum's programs, including weekend excursion train operations, track construction, restoration and maintenance, and even clerical work. A background in history is not required to become a volunteer. In fact, most of the volunteers in the popular program began with little knowledge of railroads or the Gold Rush.

As individuals become more familiar with the Museum's varied and frequent programs, many volunteers take on additional responsibilities, such as conducting research

**Railroad Museums &  
Historical Societies**

Send in news & photos to

**KEY LOCK & LANTERN**

E-mail: [transportsim@aol.com](mailto:transportsim@aol.com)

# Online Only Railroadiana Auction



## Rare Finds!

An original and perhaps the only known lighted 'Drumhead' passenger train sign for THE MEMPHIAN, a Frisco night train that ran from St. Louis to Memphis circa 1920s through 1957. Complete with original housing and hangers.

And a rare bronze builder's plate, The Baldwin



Locomotive Works, Philadelphia, 1946

Open for Bidding Online September 16-30 at [DirkSoulisAuctions.com](http://DirkSoulisAuctions.com)

Inspection available at any time.

Please call us at 816.697.3830 or 1.800.252.1501 to make an appointment.

Or e-mail [Dirk@DirkSoulisAuctions.com](mailto:Dirk@DirkSoulisAuctions.com).



A Large Collection of Railroad China and Flatware

Cast Iron Locomotive Number Plate



Frisco Railroad Bottom Marked Flower Vase



Frisco 'The Sunnyland' Metal Sign, 32 x 30 inches

## DIRK SOULIS AUCTIONS

*Fine Art and Antiques Worldwide*

[www.DirkSoulisAuctions.com](http://www.DirkSoulisAuctions.com) | 816.697.3830 | [Dirk@DirkSoulisAuctions.com](mailto:Dirk@DirkSoulisAuctions.com)

exhibitor Patrick McClane (aka “Mr. Big”), for his extensive exhibit of depot, platform, and street lamps. How he managed to fit everything in his car is still a mystery, but it was the depth and quality of his display that no doubt earned him the award. This is the second year in a row that the “Best in Show” award went to a non-railroad display, showing that the interests of convention attendees extend to a variety of different areas.

Other exhibitors at the Railroad History Expo included the Adirondack Scenic Railroad, the Cooperstown & Charlotte Valley Railroad, the National Association of Timetable Collectors, and Brookline Auction Gallery. Scott Czaja, the



*KL&L Convention Chairman John Brainard presents the “Best in Show” award to “Mr. Big,” Patrick McClane for his display of platform & street lamps. Dave Hamilton photo.*



*While plenty of memorabilia changes hands, the best aspect of the KL&L Convention is the chance to visit with other historians & collectors. Dave Hamilton photo.*

railroadiana sales manager at Brookline offered “Roadshow” style evaluations of memorabilia, and several local collectors showed up with artifacts for review. Scott also provided delivery of items from his last auction to those attending the convention who had left absentee bids.

At 11:00am, the general membership meeting of Key, Lock & Lantern was held, with a brief report on the organization’s business given by KL&L president Dave Hamilton. The

slate of officers and trustees was approved by voice vote, and the floor was opened to members for comments and any new business. With no additional motions made, the annual meeting was adjourned.

Lunch was then served in the mezzanine, sponsored by the New York-Pennsylvania Collector magazine, a long time supporter of Key, Lock & Lantern. After a long morning of making deals and viewing displays, everyone enjoyed a

*Continued on Page 15*



*Several members were downsizing, resulting in plenty of new material at the show. Dave Hamilton photo.*



*A variety of railroad memorabilia was displayed or offered for sale & trade at the Railroad History Exposition.*

break for subs, chips, and drinks. As in past years, Marie Brainard provided a variety of cookies for dessert. During lunch, attendees were able to preview the items that had been donated for the fundraiser auction.

Loosely termed an “auction,” the fundraiser is a fun and lighthearted event where members bid on railroadians, some good and some that would probably never otherwise change hands. This year’s event included more on the “good” side, with several lots bringing relatively high prices. When the good-natured competition ended, collectors went away with some good deals, and the organization had raised several hundred dollars for future projects.



*The Key, Lock & Lantern annual banquet returned at this year’s convention, with a buffet dinner and railroad history programs at the Trackside Restaurant in Union Station.*



*The Key, Lock & Lantern Convention isn’t just about hardware. Several dealers of paper and the National Association of Timetable Collectors exhibited at the show.*

After some last minute trading and a few final photos of the exhibits, the displays were taken down and members headed back to their rooms for a brief rest before dinner. A wedding ceremony taking place in the hotel lobby resulted in an adventure for those who were loading up their cars that afternoon (the bride probably wonders where the hand cart

tire marks on her dress came from, but this writer disavows all knowledge of it). A few members headed down to the tracks for some photos, while others made their way down to Union Station for a 5:00pm cocktail hour.

Last year’s convention saw the return of a Saturday evening dinner event, as a stop on the KL&L Boonville Dinner Express train on the Adirondack Scenic Railroad. This year, the convention committee brought back the annual banquet dinner, holding it at the Trackside Restaurant in the historic Utica Union Station. An ample buffet meal was served, as Amtrak and CSX trains rolled by outside the window.



*Delicious food and good company at the 2016 Key, Lock & Lantern Convention annual banquet.*



*There were plenty of deals to be found at the annual KL&L fundraiser sale, which was as entertaining as always.*

Following dinner, several railroad history programs were presented by convention attendees, including an overview of the New York Central Adirondack Branch by author John Taibi, a history of Utica’s railroads by Bill Moll, and an introduction to drone photography by William Sternitzke. Several members also presented slide shows, including local railroad scenes of 30 years ago by Dave Hamilton. The late evening arrival of Amtrak’s Lake Shore Limited brought many members out to the platform to watch its station work, marking the end of the night’s festivities.

Continued on Page 16

Many KL&L members met early for breakfast on Sunday morning, before heading over to the Utica Union Station for a trip on the specially chartered Key, Lock & Lantern Adirondack Express train. After three years of good weather for four different train rides, our luck finally ran out this year, with passing rain showers throughout the day. While the cloudy skies weren't the best for photographers, the scenery was no less spectacular and everyone enjoyed the opportunity to visit with fellow members in a relaxed setting.

Once again this year, a group of members of the Rochester & Genesee Valley Railroad Museum joined KL&L for the excursion, arriving by bus in the morning. The sold-out train



*The KL&L Adirondack Express passes Holland Patent on the NYC St. Lawrence Division. Don Rohauer photo.*

and other historic structures remain standing along the line, and those who had attended John Taibi's presentation the night before knew where to look for them. Coach passengers were able to feel the cool Adirondack air from the open baggage car and purchase snacks in the cafe, before returning to the comfortable seats of the former CN long distance cars. First Class passengers enjoyed lounge seating in two open platform business cars, where Jerry & Scott Bertoldo provided Pullman-style food & cocktail service.

Despite the rainy weather, a photo stop was made on the northbound run, with Adirondack Scenic RR F-unit 1502 on the head end. Arriving at Thendara, the train crew had



*McKeever is one of the old New York Central stations still standing on the Adirondack Division. Don Rohauer photo.*

departed from Utica at 10:00am, following the route of our previous excursions on the former St. Lawrence Division of the New York Central to Remsen, NY. Here, the train entered territory over which past KL&L excursions have not traveled, traversing the Adirondack Division.

Following the Moose River, the train passed through remote areas of the Adirondack wilderness, over high trestles and through rock cuts. Many original New York Central stations



*The KL&L Adirondack Express train arrives at Big Moose station, the highest point on the line. Don Rohauer photo.*

a few switching moves to make, which allowed another opportunity for passengers to disembark for photos and to visit the museum and gift shop in the station. Upon departure, box lunches were served to those passengers who had purchased them, and special lunch items were offered in the cafe car.

At 1:00pm, the train arrived at Big Moose, the highest point on the line, and current end of the line for the Adirondack's Utica trains. The station now houses a restaurant, and a



*First Class passengers enjoyed observation lounge seating and Pullman-style service. Dave Hamilton photo.*

Continued on Page 17



buffet lunch was served to passengers who had not selected one of the other meal options. Diehard railfans braved a downpour to photograph the crew switching the business cars and running the engines around the train. One of the former Canadian Pacific MLW RS-18's was positioned to lead the train on its return trip.

After delicious lunches were enjoyed in the station or cafe car, the crew briefly posed the train for photos before the passengers reboarded during a break in the rain. The KL&L Adirondack Express also had the distinction of



Coach passengers enjoyed the company of fellow KL&L members in former CN equipment. Dave Hamilton photo.



Many KL&L members enjoyed a buffet lunch in the Big Moose Station Restaurant. Dave Hamilton photo.

carrying revenue passengers, as Bob & Linda Dingman (of the New York & Lake Erie Railroad) purchased tickets for transportation from Big Moose to Utica. This may be a first for a "railfan" excursion!

No stops were scheduled on the southbound leg, but when a thunderstorm rolled through, several trees were blown down across the tracks. Brief stops were made while the crew cut up the trees with a chainsaw (something not included in the toolbox on Adirondack & St. Lawrence trains), and only a

short delay resulted. The skies began to clear as the train crossed Kayuta Trestle and switched back to the rails of the Mohawk, Adirondack & Northern RR at Snow Junction.

The train's arrival back in Utica was only slightly later than planned, allowing members who were connecting to Amtrak train #288 plenty of time to get over to the track 2 platform. Many convention attendees who were spending the night in Utica headed across the tracks to Babe's Grill for dinner, where several hours of discussion on railroad topics took place. After seeing off the passengers who were making a




The KL&L Adirondack Express arrives back at Utica Union Station in time for Amtrak connections. Don Rohauer photo.

connection to the Amtrak Lake Shore Limited (New York State take note: the Adirondack Scenic RR can be a viable part of the transportation network), the tired excursion riders headed back to the Hotel Utica.

The following morning, the remaining KL&L members met for breakfast and last minute trades, before packing up for the trip home. Thanks to the hard work of the convention committee, the support of our sponsors, and the participation of our members, the 2016 Key, Lock & Lantern Convention was a huge success. Here's looking forward to next year!



Bob & Linda Dingman used the KL&L Adirondack Express to travel from Big Moose to Utica. Dave Hamilton photo.

 For Additional Photos, Visit the KL&L Page on Facebook. Use the link at [www.klnl.org](http://www.klnl.org).



A rare silver with blue enamel Santa Fe logo "Courier Nurse" badge brought a high bid of \$1000.



A \$625 high bid took home this Southern Pacific Company sunset logo International Silver mustard pot.



A \$210 high bid took home this place setting for four of Santa Fe Albany pattern silverware by International.



"Crossing Watchman" is a harder to find occupation, and this Northern Pacific Railway badge brought \$440.



An Atchison & Nebraska Railroad 1878 annual pass issued to W.S. McComb of the W&GRR sold for a \$420 bid.



Some of the many scarce & unusually marked switch keys in the sale: Atchison Topeka & Santa Fe (\$360), Big Creek & Telocaset (\$250), Columbia & Puget Sound (\$140)

*Continued on Page 19*



Something a little different - this 10" Adlake cast iron electric gauge lamp sold for a high bid of \$360.



A high bid of \$850 was needed to buy this SRY Armspear lantern with a clear cast Southern Railway tall globe.



A \$340 bid was needed to purchase the Tomball, Texas ticket dater die from the Burlington Rock Island Railroad.



A nice Western Pacific Feather River Route logo casserole dish by Shenango brought a \$500 high bid.



Typical wear on this scale house sign from the Chicago, Milwaukee & St. Paul Railway by the Western Enameled Steel Sign Co. didn't stop it from bringing a \$400 bid.

Continued on Page 20



This Minnesota & Northwestern RR wax sealer from the Dyersville, Iowa station went to a new home for \$360.



A small rim chip didn't stop this Illinois Central French Quarter "Claiborne Court" service plate from bringing \$380.



More switch keys: Chicago, St. Louis & New Orleans RR by Slaight (\$500), Colorado Midland (\$420), Cleveland, Mount Vernon & Delphos RR by Romer & Company (\$360).



A Chicago, Rock Island & Pacific lock by Adams & Westlake with unmarked key sold for a \$725 bid.



A high bid of \$725 was needed to purchase this rare Western Pacific Railway brass heart switch lock



A \$550 bid took home this Colorado & Southern Railway 1900 annual pass with Alpine Pass & steamship vignette, issued to Walter W. Clark, Denver Union Depot agent.

Continued on Page 21



This rare Denver & Rio Grande Railroad fancy cast brass heart lock by Slaymaker sold for a high bid of \$2700.



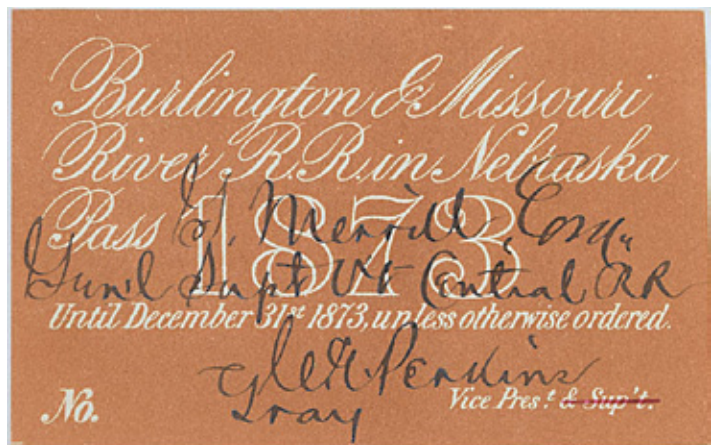
A high bid of \$230 was needed to buy this Salem Falls City & Western Railway "Local" brass baggage tag.



Some of the many keys: Choctaw Oklahoma & Gulf by Buck (\$320), Central Pacific RR of California by Richie & Boyden (\$1550) and Central Railroad of Iowa (\$825)

TRAIN SCHEDULES		
TRAIN NO	DUE	DEPART
SOUTH BOUND		
D&RGW 1		
C&S 21		
D&RGW-MP 3		
AT&SF 101		
C&S-AT&SF 27		
NORTH BOUND		
C&S 22		
D&RGW-MP 4		
AT&SF 102		
D&RGW 2		
C&S-AT&SF 28		
		DATE

A unique artifact, the wooden train announcement board from the Littleton, Colorado depot on the Atchison Topeka & Santa Fe, Denver & Rio Grande Western, and Colorado & Southern railroads sold for a high bid of \$1050.



This Burlington & Missouri River Railroad in Nebraska 1873 annual pass issued to G. Merrill, Superintendent of the Vermont Central Railroad sold for a \$380 high bid.

Continued on Page 22



A scarce Union Pacific "Tool Rack" bras heart lock with a UP marked key sold for a high bid of \$675.



Keys from the San Pedro, Los Angeles & Salt Lake RR by A&W (\$1750), Virginia & Truckee RR by Bohannon (\$725) and Wells Fargo & Company Express (\$600).



An \$800 bid took home this Denver & Rio Grande 1900 annual pass issued to Denver ticket seller WW Clark.



The auction also included several lots of scarce paper, such as a 1903 Colorado & Southern timetable (\$675) and Denver & Rio Grande 1891 timetable & guide (\$1050).



More unusually marked keys: Kansas & Southern RR (\$300), Kansas City Burlington & Santa Fe RR (\$400) and Rockford, Rock Island & St. Louis RR (\$360).

## KEY LOCK & LANTERN

Can Help Promote Your  
Auction, Show or Event  
Contact KL&L at [transportsim@aol.com](mailto:transportsim@aol.com)



# Just Reading the KL&L News? You're Only Getting Half of the Story!

**Don't Miss The Quarterly Key, Lock & Lantern Magazine, With In-Depth Articles About Railroad History & Collecting - Sent Only to KL&L Members!**



**Articles in Recent Issues Include: Winter in Chicago, The Bundy Lantern, Southern Pacific Badges, New Haven Line vs. The Squirrel, Switch Lock Diagrams, Lanterns of the Western Maryland RR, Railroad Slang, Monument to the Prince of Erie, Long Island RR Badges, Early Punched Tin Lanterns, Ticket Dater Maintenance, Q&A Column, Members Displays, and More.**

**Join Today with Online Dues Payment at [www.klnl.org](http://www.klnl.org)**

# Railroad Societies Hold Fall Conventions

As the summer winds down and tourist train and museum season comes to an end, many railroad historical societies keep things rolling with their annual conventions. During the months of September and October, many groups hold meetings that include excursions, programs, and train shows. While some events at conventions are “members only,” many are open to the public.

For railroad history buffs who are considering joining an organization, annual meetings are an excellent way to find out more about a group and to meet some of its members. Many groups also sponsor holiday train shows, which also



provide an opportunity to discover what they have to offer. The events calendar page at [www.klnl.org](http://www.klnl.org) is an easy way to find upcoming conventions and meetings in your area, with links to each group's website for information about the various events.

The fall season starts with the Baltimore & Ohio Railroad Historical Society's convention in Buffalo, NY, running from September 15th through the 18th. Activities include several presentations on local railroad history, bus tours of the former BR&P lines to Buffalo and Rochester, and a visit to the Heritage Discovery Center museum.

Erie Lackawanna fans will be visiting western New York at the same time, with the EL Historical Society annual meeting taking place in Mount Morris, NY from September 16th through 18th. Programs include lectures, a visit to the



soon to be dismantled Portage Viaduct, and an excursion on the former Erie B&SW Branch, operated by the Buffalo Southern Railroad.

West of the Mississippi, the Wabash Railroad Historical Society will be meeting in Moberly, MO from September 16th through 18th. In addition to tours of model train layouts, local museums, and historic sites, a public train show will be held on Saturday, September 17th.

The Southern Pacific Historical & Technical Society will hold its annual conference from September 21st to 24th in Palm Springs, CA. An extensive lineup of presentations is planned, along with a vendor room and trips to the Orange Empire Railway Museum and the Joshua Tree & Southern Railroad Museum.

Back east, the Penn Central Railroad Historical Society will hold its annual convention at Buffalo's Heritage Discovery Center from September 22-24. In addition to displays and

*Continued on Page 25*



## Railroad Museums & Historical Societies

Send in news & photos to

**KEY LOCK & LANTERN**

E-mail: [transportsim@aol.com](mailto:transportsim@aol.com)



programs at the museum, a bus tour will visit historic sites and other museums around the Buffalo area.

The Central Vermont Railway Historical Society will meet in Bethel, VT from September 22nd through 24th. Following a slide program on Friday night, a full day of lectures and a banquet dinner are planned for Saturday. A driving tour of the area is planned for Sunday.

The month wraps up with the Monon Railroad Historical & Technical Society's annual meeting in Hammond, IN from September 30th through October 2nd. A banquet on Friday night will be followed by a day of tours and an excursion on the South Shore on Saturday. A train show and swap meet will take place on Sunday.



Events at the Casey Jones Museum in Jackson, TN will be the highlight of the Gulf, Mobile & Ohio Historical Society annual meeting from October 21-23. A railroaders show & sale will take place at the museum on Saturday, and is open to the public. Other lectures and programs are also planned throughout the weekend.

The Annual Reunion of the New Haven Railroad Historical & Technical Association will be held on October 22nd, at the Valley Railroad in Essex, CT. In addition to steam train rides and lecture programs, the popular train show will return to this year's event schedule.



Jefferson City, MO will host the annual convention of the Missouri Pacific Historical Society, from October 6th-9th. A variety of lecture programs are planned, along with a small swap meet. Union Pacific locomotive #1982, the MoPac heritage unit is also expected to be on display.

The Nickel Plate Road Historical & Technical Society will meet in Bellevue, OH from October 13th through 15th. The Mad River & NKP Railroad Museum will host the event, with displays, vendors, and special photo shoots. A banquet dinner, program and auction will be held on Saturday.



The month ends with the annual meeting of the Burlington Route Historical Society in LaCrosse, WI, from October 27th through 30th. A full weekend of events is planned, with a variety of lecture, modeler clinics, and bus tours. A train show on Sunday is open to the public.

For additional details, meeting schedules, and registration information for any of these events, visit the Key, Lock & Lantern website's Event Calendar at [www.klnl.org](http://www.klnl.org) for current listings and links to the various organizations.



# Railroad Event Calendar

Continued from Page 2

- Sep 22-24 Buffalo, NY** - Penn Central Railroad Historical Society Convention  
Info: [www.pcrhs.org](http://www.pcrhs.org).
- Sep 23-25 Bethel, VT** - Central Vermont Railway Historical Society Annual Convention  
Info: [www.cvrhs.com](http://www.cvrhs.com).
- Sep 24 Frisco, TX** - Visit by the Amtrak Exhibit Train at the Museum of the American Railroad.  
Info: [www.amtrak.com](http://www.amtrak.com).
- Sep 24 Rochester, NH** - Railroadiana Consignment Auction. JW Auction Co.  
Info: [www.jwauctionco.com](http://www.jwauctionco.com).
- Sep 24 Sharpsburg, MD** - Hagerstown Model Railroad Museum Train Sale - Wash Cty Ag Center  
Info: [www.antietamstation.com](http://www.antietamstation.com).
- Sep 25 Easton, PA** - Lehigh Valley NRHS Train Show. Charles Chrin Community Center.  
Info: [jjr2978@gmail.com](mailto:jjr2978@gmail.com).
- Sep 25 Greenwich, CT** - Southern Connecticut Model Train Show. Greenwich Civic Center  
Info: <http://southerncttrainshow.com>.
- Sep 30+ Hammond, IN** - Monon Railroad Historical & Technical Society Convention.  
Info: [www.monon.org](http://www.monon.org).
- Oct 1 Brookline, NH** - Railroadiana Consignment Auction. Brookline Auction Gallery.  
Info: [www.tagtown.net](http://www.tagtown.net).
- Oct 1 Calendon, ON** - Brampton Model Railroad Show - Brampton Fairgrounds  
[www.bramptonmodelrailroadshow.com](http://www.bramptonmodelrailroadshow.com).
- Oct 1 DeLand, FL** - Florida Rail Fair. Volusia County Fairgrounds  
Info: [www.gserr.com](http://www.gserr.com).
- Oct 1 Galveston, TX** - Visit by the Amtrak Exhibit Train.  
Info: [www.amtrak.com](http://www.amtrak.com).
- Oct 6-9 Jefferson City, MO** - Missouri Pacific Historical Society Convention.  
Info: [www.mopac.org](http://www.mopac.org).
- Oct 8-9 Forest Hill, TX** - Forest Hill Train Show- Forest Hill Civic Center.  
Info: <http://twmrc.org>.
- Oct 8-9 Wakefield, MA** - North Shore Model Railroad Club Train Show.  
Info: <http://nsmrc.org>.
- Oct 9 Spokane, WA** - Spokane Train Show - Spokane Fair & Expo Center.  
Info: [www.rivercitymodelers.org](http://www.rivercitymodelers.org).
- Oct 13-15 Bellevue, OH** - Nickel Plate Road Historical & Technical Society Convention.  
Info: [www.nkphts.org](http://www.nkphts.org).
- Oct 13-23 Raleigh, NC** - Visit by the Amtrak Exhibit Train.  
Info: [www.amtrak.com](http://www.amtrak.com).
- Oct 16 St Charles, IL** - Chicagoland Railroadiana Show - Kane County Fairgrounds  
Info: [www.rrshows.com](http://www.rrshows.com).
- Oct 21-23 Jackson, TN** - GM&O Historical Society Meeting & Train Show.  
Info: [www.gmohs.org](http://www.gmohs.org).
- Oct 22 Essex, CT** - New Haven Railroad Historical & Tech Association Reunion.  
Info: [www.nhrhta.org](http://www.nhrhta.org).
- Oct 23 Griffith, IN** - Blackhawk Chapter NRHS Swap Meet Railroadiana Show.  
Info: [www.blackhawknrhs.org](http://www.blackhawknrhs.org).
- Oct 29 Indianapolis, IN** - Indy Railroadiana Show - Clarion Inn East.  
Info: [www.indyrrshow.com](http://www.indyrrshow.com).

## Send listings to: [transportsim@aol.com](mailto:transportsim@aol.com)

There is no charge for calendar listings. Train shows must include dealers of authentic railroad memorabilia or related material, and auctions must include at least 20 lots of railroadiana. Other events must be directly related to railroad history (special exhibitions, lecture programs, conventions, limited excursions, etc.). Regular monthly group meetings, model train meets & scheduled tourist train trips are not eligible, unless related to a special event. Events are listed space permitting, at the editor's discretion. Listings are subject to error or change. Always check show web sites before traveling.

## Visit [www.klnl.org](http://www.klnl.org) for Updates

# The New York-Pennsylvania COLLECTOR

Living with Antiques, Art & Americana

A Monthly Publication Featuring News & Articles About Antique Collecting & History



*Auction & Show Listings*  
*Club Meetings & Events*  
*Identification & Fakes*  
*Antique Restoration Tips*  
*Museums & Historic Sites*  
*Dealer & Flea Market Ads*

Subscription & Advertising Information:  
1-800-518-0875 [www.nypa-collector.com](http://www.nypa-collector.com)

**KEY LOCK & LANTERN**  
Can Help Promote Your  
**Auction, Show or Event**  
Contact KL&L at [transportsim@aol.com](mailto:transportsim@aol.com)

# WANT ADS & ANNOUNCEMENTS

Want Ads are FREE to Key Lock & Lantern members on a space available basis, in the KL&L Magazine and the KL&L News. E-mail to [j944wb@aol.com](mailto:j944wb@aol.com) or mail to: John & Marie Brainard, 35 Nordhoff Place, Englewood, NJ 07631

## For Sale

**For Sale:** Railroad Artifacts & Memorabilia: Everything from keys, locks & hardware to china, paper, and more. Jane Silvernail. Website: <http://timestreasures.rubylane.com> or contact by e-mail at [timestreasures@sohotechical.com](mailto:timestreasures@sohotechical.com).

**For Sale:** Switch Lamps, Markers & Parts. Website: [JerrysRRStuff.com](http://JerrysRRStuff.com). Phone: 206-778-0386. E-mail: [jerry@JerrysRRStuff.com](mailto:jerry@JerrysRRStuff.com).

**For Sale:** CB&Q RR Special Police badge and CB&Q RR Special Watchman badge. Will consider trade for other RR police badges. Dan Pottebaum. [windsor5207@yahoo.com](mailto:windsor5207@yahoo.com) or call 712-274-8847.

**For Sale:** Keys, Locks, Lanterns, Ephemera, etc. Mostly NE including ME narrow gauge. Jerry Devos, PO Box 376, Towaco, NJ 07082. 862-222-5264. [jdevos99@aol.com](mailto:jdevos99@aol.com).

**For Sale:** Original steam, electric & diesel locomotive builders plates. Currently wide range of N&W diesel plates in stock. E-mail for current list: [rjmuldowney@comcast.net](mailto:rjmuldowney@comcast.net) or call Ron Muldowney at 609-397-0293.

**For Sale:** Old (1850's-1890's) New England railroad paper items. Lots of old name railroads, also Rutland, Central Vermont, Housatonic, Fitchburg, etc. Good to excellent condition. Contact Chuck Hall at 315-824-1674.

**For Sale:** *Railroadiana II: The Official Price Guide for the Year 2011 and Beyond*. Softcover, \$65 + shipping. Railroad Memories. 303-759-1290. [www.railroadmemories.com](http://www.railroadmemories.com).

**For Sale:** Dressel switch lamp, complete, excellent condition, no RR markings, \$250 + shipping. Also have 6-chime Central Vermont whistle & Maine Central counter-top ticket case. Richard Gibbons, 1050 East Brigham Rd, Unit 59, Saint George, UT 84790. [gibbons@infowest.com](mailto:gibbons@infowest.com). (435)-634-8205.

**For Sale:** Disposing of late husband's collection of over 250 railroad lanterns. For a complete list with prices, e-mail: [lotusbuzz@gmail.com](mailto:lotusbuzz@gmail.com).

**For Sale:** Railroad locks, keys and more for sale. For more information, visit website at [www.angelfire.com/biz/toysoldierhq/Railroad.html](http://www.angelfire.com/biz/toysoldierhq/Railroad.html). Kent Sprecher back in the hobby!

## Wanted

**Wanted:** Oil type cab lamp with shade. Contact Aubrey Keller at [akeller@utm.edu](mailto:akeller@utm.edu) or call 731-587-4723.

**Wanted:** New York Westchester & Boston Ry Signal lock and other hard to find signal locks such as Long Island and any I do not have. Contact Jeff Irvin 2524 Big Bear Ln. Indianapolis, IN 46217 - [j.irvin@sbc.global.net](mailto:j.irvin@sbc.global.net) or 317-882-2336

**Wanted:** Switch keys from the L&HR, WVRR, SRR, NY&ERR. Stock Certificates: Wawayanda RR, Mine Hill RR, Pequest & Walkill RR, and Southfield Branch RR. Phil Simms, 8 Still Waters Drive, Campbell Hall, NY, 10916. Call 845-427-5051.

**Wanted:** Looking for small hardware items from the Northhampton & Bath RR such as keys, badges, brass time/tool checks or any other significant small item. Have some interesting items to trade from US Steel roads. Contact Jeff Wolfe at [lobowolf@aol.com](mailto:lobowolf@aol.com).

**Wanted:** Memorabilia from the NY & Greenwood Lake Ry. Jerry Devos, PO Box 376, Towaco, NJ 07082. 862-222-5264. [jdevos99@aol.com](mailto:jdevos99@aol.com).

**Wanted:** Factory marked inspector lamps. Must be complete and in reasonably good condition. Marked globe a plus. Need RDG C&O B&O GCT SOURY (or S RY) Erie Acme model plus others I may not be aware of - Contact Larry Davis, 5110 Hollywood Ave; Shreveport, LA 71109. Phone: 318-469-7825.

**Wanted:** Pennsylvania RR Macbeth #220 pearl glass globes with straight letters 3/4" in height, "PRR" in rectangle. Need clear and red globes. Have traders or cash. Joel Shaw, 31 Sandle Drive, Fairport, NY 14450. Phone: 585-385-3776.

**Wanted:** Delaware Lackawanna & Western keys & locks. Contact Bill Roberts. 8812 Mourning Dove Court, Gaithersburg, MD 20874. E-mail: [whadynrob@gmail.com](mailto:whadynrob@gmail.com) or call 301-977-3025.

**Wanted:** Keys, locks, lanterns, China, builder plates from Oliver Iron Mining and Duluth area railroads. Email: [thornton454@hotmail.com](mailto:thornton454@hotmail.com)

**Wanted:** Keys, locks, lanterns, fly fishing leader boxes, passes, buttons & other from the Denver, South Park & Pacific Ry - Denver, Leadville & Gunnison Ry - Union Pacific Denver & Gulf - Colorado & Southern Ry. Leonard Walmsley, 11044 Claire Circle, Northglenn, CO, 80234 or call 303-429-8674.

**Wanted:** Switch key for the PCRY (Pacific Coast Railway), not PCRR (Penn Central), probably made by Fraim. Contact Steve Mott at 805-544-5339 or by e-mail at [sjmott2359@sbcglobal.net](mailto:sjmott2359@sbcglobal.net).

**Wanted:** Brass burner for a Dressel double wire tall globe railroad lantern & twist off font with burner for a Dietz 39 Vulcan wire frame. Also buying Western Maryland locks, keys, lanterns & globes, and C&PRR items. Joseph G. Hauger, 401 2nd St., Terra Alta, WV, 26764. E-mail address: [whiteoak4@frontier.com](mailto:whiteoak4@frontier.com) or phone 304-789-2229.

## Wanted

**Wanted:** Lanterns, globes, locks, keys, hat badges, RR PD or RR Fire Dept items, Long Island RR & Staten Island Rapid Transit. Bob Myers, 36 Pine Hollow Lane, Greenlawn, NY 11740. 631-757-9540. [robertrail@yahoo.com](mailto:robertrail@yahoo.com).

**Wanted:** Items from the Surry, Sussex & Southampton Ry. Jerry Rakes, PO Box 384, Tappahannock, Va 22560.

**Wanted:** B&O Yale signal locks, cast B&O or Y&T Butler, Charleston, Delphos, Ohio River & Shenandoah divisions. David W. Robinson. [dwrbo@aol.com](mailto:dwrbo@aol.com). 540-820-8998.

**Wanted:** Factory marked ICRR tall lanterns by Defiance, Universal Spinning & Stamping, Prier Brass Co. Globe not important. Good condition & complete. Larry Davis, 5110 Hollywood Ave, Shreveport, LA 71109. 318-469-7825.

**Wanted:** Railroadiana from Huntington & Broad Top Mountain RR (and Coal Co.). PA shortline 1850's-1950's. John Houpp - call 484-268-6698 or e-mail [jdhoup@hotmail.com](mailto:jdhoup@hotmail.com).

**Wanted:** Cast brass fancy back railroad switch locks. Instant cash paid for any lock not already in my collection. I also have a list of approximately 125 rare cast switch locks for sale or trade. Contact Warren at 239-440-4254 (new number) or [warrennyergesjr@hotmail.com](mailto:warrennyergesjr@hotmail.com).

**Wanted:** Lanterns, locks, timetables & passes of all types from Southern Ry, Richmond & Danville, East Tennessee Virginia & Georgia Ry, Washington & Old Dominion, Washington Ohio & Western, Washington & Ohio, Alexandria Loudoun & Hampshire. Contact Andrew Ramsay at [aramsay@ieec.org](mailto:aramsay@ieec.org).

**Wanted:** Diesel locomotive builders plates from the following: Canadian National / Northern Alberta Ry London built or Pointe St. Charles rebuilt GMD-1; Canadian Pacific Montreal Locomotive Works RS-18; former Pacific Great Eastern / British Columbia / BC Rail locomotives; former Northern Alberta Ry / Canadian National GP-9; any EMD NW-5 plate. Contact Corey Panchyshyn at [bcr\\_766@hotmail.com](mailto:bcr_766@hotmail.com).

**Wanted:** Diesel builders plates, especially EL and other northeastern US railroads. Have plates to trade. E-mail: [RBombel@aol.com](mailto:RBombel@aol.com).

**Wanted:** Railroad Horse Car Bells. Will buy one or an entire collection, or have bells to trade. Contact Roger Plaquet at [rplaquet@ciaccess.com](mailto:rplaquet@ciaccess.com) or call 519-354-4538.

**Wanted:** Canadian switch keys. Looking for keys from Canadian roads for my collection and display in a small museum. Will purchase or have some U.S. keys for trade. Contact Brad at [alco1310@sympatico.ca](mailto:alco1310@sympatico.ca)

**Wanted:** LV, D&H, CV switch, signal, mechanical, motive power dept. lock sets. Uniform cap badges. Anything northeast. Chuck Hall. 315-824-1674. E-mail: [mollymussonhall@yahoo.com](mailto:mollymussonhall@yahoo.com).

**Wanted:** Amber (yellow) glass 6.5" diameter lens for a Atlantic City RR (Phila. & Reading) Semaphore used about 1890. This is slightly convex un-fluted that fit in the moving three color frame of a semaphore signal. Also need design of fish tail wood blade to replace my mistaken pointed wood blade. W. G. Cook [PRR6986@Yahoo.com](mailto:PRR6986@Yahoo.com). 518-784-2137 May be interested in finding a proper home for entire signal including CNJ light unit to power it.

**Wanted:** Switch keys from The LH&R, NYS&W, M&E, L&NE, NY&GL, Wharton & Northern, Mine Hill RR and other NJ short lines. Premium price paid for NYS&W "fancy back" cast heart shaped lock. Chip Greiner, P.O. Box 125, Bogota, NJ 07603 email [rbbadges@aol.com](mailto:rbbadges@aol.com).

**Wanted:** Railroad Police Badges and Railroad Police artifacts such as police office signs, old police department photos, early uniforms and patches, etc. Need NYO&W RY Police "Lieutenant" rank badge and will pay premium price or trade. Chip Greiner, P.O. Box 125, Bogota, NJ 07693. Email [rbbadges@aol.com](mailto:rbbadges@aol.com).

**Wanted:** Coat button from West Penn Railways (W.P. Ry), southwest Pennsylvania trolley system. Will pay good or trade other trolley line buttons. Also, early PRR buttons with fancy letters. Jim Chew, 900 N. 4th Street, Jeannette, PA 15644, (724) 523-6889.

**Wanted:** Photo of NY State Railways Syracuse Lines car #1024. Also any photos of Syracuse trolleys on Irving Ave and around Syracuse University. Also, globe for an SG&L Lake & River lantern, large 6x6 "government" style or "No.7" style. Dave Hamilton. [transportsim@aol.com](mailto:transportsim@aol.com). 518-439-8392.

## For Trade

**For Trade:** LC&N Co Casey lantern, 6" Penna Co globe, D&RGRR cast lock by Dayton, SRRR, GF&ARY, C&A Ry tapered keys, T&OC dessert knife by R&B. I collect southern lower Michigan and also want 6" colored globes. Walter Sulowski at [walter-sulowski@msn.com](mailto:walter-sulowski@msn.com) or 313-295-7306.

**Want Your Message to Get More Attention?**  
Upgrade to a Display Ad for as little as \$15  
Contact Dave Hamilton: [transportsim@aol.com](mailto:transportsim@aol.com)

# KEY LOCK & LANTERN

## Index on Computer CD

Index of all KL&L Magazines from Issue #1 through Issue #151 in searchable Acrobat (PDF) format. \$7.95 postpaid. Contact:

Marie Brainard  
35 Nordhoff Place  
Englewood, NJ 07631-4810

## Membership Brochures

Are Available in PDF Format for Printing & Distribution at Railroadiana Shows, Historical Museums, Railroad Club Meetings & Other Events

Download the Current Version at  
[www.klnl.org](http://www.klnl.org)



All submissions for the KL&L magazine, news items for the digital KL&L News & general inquiries should be sent to:

KL&L President & Editor  
David Hamilton  
244 Elm Ave  
Delmar, NY 12054  
E-mail: [transportsim@aol.com](mailto:transportsim@aol.com)

Send membership applications, dues payments, address changes & want ads to:

KL&L Chairman John Brainard &  
VP-Membership Marie Brainard  
35 Nordhoff Place  
Englewood, NJ 07631  
E-mail: [j944wb@aol.com](mailto:j944wb@aol.com)

Join or Renew Your  
**KEY LOCK & LANTERN**  
Membership Online at  
[www.klnl.org](http://www.klnl.org)

### KL&L Membership Form (2016-2017 Membership Year)

Please make check or money order payable to Key, Lock & Lantern, Inc. and forward to: Marie Brainard, KL&L Membership, 35 Nordhoff Place, Englewood, NJ 07631-4810

Name \_\_\_\_\_

Representing (business or museum, if applicable) \_\_\_\_\_

Address \_\_\_\_\_

City \_\_\_\_\_ State/Prov \_\_\_\_\_ Zip/Mail Code \_\_\_\_\_

Phone \_\_\_\_\_ E-mail \_\_\_\_\_

Basic membership at \$30 per year (1st Class mailing in USA) or \$40 per year (non-USA).....\$ \_\_\_\_\_

Contributing membership at \$35 per year, to help support KL&L(1st Class mailing in USA)..... \$ \_\_\_\_\_

Additional family members at \$4 per person (only one magazine is sent per family).....\$ \_\_\_\_\_

Additional Donation.....\$ \_\_\_\_\_

Enclosed is my check / money order payable to Key Lock & Lantern, Inc. for.....\$ \_\_\_\_\_

Membership in KL&L includes 4 issues of the magazine, and the annual membership period begins in July of each year. New members joining before April will receive all previously published magazines for the year, and will be due for renewal in July. New members joining in April, May or June will have their dues applied to the next membership period, beginning with the Jul/Aug/Sep issue, unless otherwise requested.