
THE SIGNAL BOARD - This is the place to look to see if your subscription renewal is due. If you find a red "X" below please send your cash, check or money order for \$1.50 made out to Walter L. George so that your issues can continue. If you find two red "X's" it means that this is the second time I have notified you, and budget demands make it necessary for me to stop sending the paper. (Sob!) Also, please continue your ideas, advice, constructive criticism. We need it.

Your subscription renewal is due _____

SHORT LINES (Continued)

I want to sincerely thank those readers who have sent some extra donations from time to time for the KL&L's expenses. Thanks also to: Kenneth Kerr, who sent the editor a dandy little Golden Spike tie pin - I'll wear it proudly and to John Lucas, who sent me a copy of the book, "The Chili Line" and to Fred Robinson, who loaned his beautiful, color catalog from Dietz, 1926 - you'll be seeing some good illustrations in the KL&L before long from this one and to Harold Bortz, who sent two books which are interesting and helpful, also on loan; and, while we're at it, continuing gratitude to all you readers whose interest and support make the paper possible.

More about the Golden Spike Centennial and the NKP 759: I got to go over to the Kansas side the other day to see the Union Pacific's exposition train, which included an "audio-visual" car with a film about the transcontinental rail epic and the UP's advancement; a museum car; the two stand-in locos on flats which represented the Jupiter and the 119 in the celebration, and several other pieces of old rolling stock. And, I want to go on record here in thanking and congratulating the Norfolk & Western RR for its friendly helpfulness to fans while the 759 was laid over here. The loco was kept in the N&W roundhouse over in North Kansas City, and not only did they let us in with their cameras, they volunteered information, answered questions, and, on the day before the train started back to the East, they parked the loco out where it would be in the best lighting for photos - in fact, they put it in one place and then moved it to another just for the camera bugs. This was good railroad PR at its best, and everyone should know about it.

Here are more lantern maker's names to add to the list in last issue. The reader or readers who sent in the information are listed:

from Wayne Rheinfeld:	Stillman Lantern Co. F. O. Dewey Co., Boston
from Ken Kerr:	Gensey Lantern Co., Kansas City
from Wayne Daniels and Phil Simms:	"The C. T. Ham Co. was located in Rochester, N.Y."
from Wayne Daniels and Roy Klaus:	Roberts Safety Lantern Mfg. Co., Scranton, Pa.
From Robert M. Hall:	Ohio Lantern Co., Tiffin, Ohio

I believe this makes 53 different makers that we now know of. Roy Klaus adds that the Belnap Hardware & Mfg. Co. (in last issue's list) was a maker of railroad lanterns for sure. While on the subject of makers, I see that recent lanterns from Hiram L. Piper are Adlake Keros with the Piper name stamped around the skirt of the lid. By recent, I mean in the past twenty years or so.

THROUGH THE KEYHOLE

One of our newest subscribers has a fascinating combination of career and interests: Father Steve Sandknop is pastor of St. Mary's Church, Glasgow, Mo., and the Chairman of the Missouri, Santa Fe and Western Railway Company, Edina, Mo., and, he is a scout for the Cleveland Indians! We don't know for sure, but assume that his railway company is a non-operating museum - they belong to the NRHS.

George Pierson, Rocky River, Ohio - refers to the road initials A&MR, which we identified back in issue #12 as the Alabama & Mississippi River - and says that very likely in the case mentioned the initials stood for the Arcata & Mad River, which is a lumber road in California. Al Barker, Torrance, Calif., also mentioned this in a past letter. In other words, it could be either one depending on other information you might come up with regarding a particular occasion of finding the initials. George asks help in identifying these initials: LFD&T, which he believes is located in Ohio. We can't find this one.

Chaplain A. L. Deminy, Port Hueneme, Calif., has found a lantern made by Hiram L. Piper from the CP RR with a wooden handle which is straight across the top.

Ron Ruffule, (new address) 495 Newhall Dr., Corona, Calif. 91720 - moved two hundred lanterns and lots more during his move. Ron wants to know the address of a Fred Davis who seems to have moved to Oregon. We have no record of Mr. Davis, Ron.

Joseph A. Rice, 5503 Koeffler Dr., Pittsburgh, Pa. 15236 - has a good trade list. Please send a SSE when writing.

Don Tyler, Gretna, Va. - has found an all brass lock of unknown make from the old F&P RR - Franklin & Pittsylvania - which ran from Gretna to Rocky Mount, Va., for a distance of about 30 miles. Don says, "This road, better known as the "East & Perfect" went out of business in the late '20s."

Wayne Rheinfeld, Far Rockaway, N.Y. - has found two fine lanterns: a bell-bottom, brass-topped one from the Rutland, and another B-B, B-T'd one from the NYC&HR RR, (New York Central & Hudson River, now part of the PC).

Ken Kerr, Kansas City, Kansas - went to Promontory, Utah, for the big celebration. While around there he found an old tie plate and spike from the old road bed of the UP about three miles outside of Corrine, Utah - this was the original roadbed that went through to Promontory Point.

Wayne M. Daniels, Maywood, N.J. - says his globe from the old NY&NE RR has prompted him to wonder what happened to that road (New York & New England). Wayne, it was absorbed by the New Haven but we don't have record of when.

Gil Irps, Kankakee, Ill., is stumped by the following initials on a steel Adlake lock: UPMP&C. The lock is of 1954 vintage and came from the Seattle area. This one stumps us too, Gil. Can anyone help us out?

Gil also ponders the idea of a semi-monthly KL&L, smaller in size, with one very good advantage of the readers being able to advertise more often and more currently. I wish we could do this too, but there are two drawbacks: time and money (my time, and your money). My work load is making it hard to get the KL&L out four times a year as it is, which, I'm afraid, is going to a perpetual problem. But good idea. By the way, in reference to Gil's offer to collate names of interurbans, etc., see page 91, I suggest that a deadline date be set for sending the names to Gil so that he will know when everyone has written. How about December 31, 1969?

Harold Bortz, Levittown, Pa. - in sending the B&O Museum book, comments that the museum (in Baltimore) is one great experience for fans and hopes that many will go see it. It has a good lantern display and a great HO operating layout, in addition to all the rest.

Phil Simms, Montgomery, N.Y. - makes a good suggestion - that we try to print the KL&L so that copy does not come too close to the looseleaf holes, as he uses reinforcement rings on them. We'll try our best on this, Phil. It's very hard to control some aspects of mimeo printing, but will certainly try. And, Phil has two questions we can't answer as of now: he has a uniform button marked "N.Y. State Rys" and wonders about the background of same; and he also wonders about glass fount lanterns. We don't have anything on this. SOS.

Paul F. Moon, North Little Rock, Ark. - is right about now getting everything ready for the mid-Continent Region convention of the NMRA. Paul sends word of these finds: and Adlake Reliable from the M's L&T - that's the Morgan's Louisiana & Texas RR, now part of the T&NO, which is part of the SP; another is an Adlake Kero from the Atlanta & St. Andrews Bay RR, "The Bay Line," which now runs from Panama City, Fla., to Dothan, Alabama.

Larry Adams, Boone, Iowa - sent us the lock diagram illustration which we printed this time. It is but one of four pages from the files of the U.S. Patent Office, Pat. No. 2,040,482, which readers may obtain for 50¢ from the United States Department of Commerce, Patent Office, Washington, D.C. 20231. Mr. Hagerty was working for Adams & Westlake when this patent was filed. Suggest that you send for this, as it is very interesting and educational. Notice Fig. 3 is the lock in the open position with the key in the hole. Thanks, Larry.

Robert M. Hall, New Florence, Pa. - has lived all his life about 400 feet from the PRR mainline, and his father had 56 years of service with the road when he retired, the last 49 years of which was spent as an operator of "J.D." tower. Bob says that in his part of the country there were "thousands" of Casey lanterns with the wick adjustment from the bottom and outside. Bob has a bell bottom with 5½ inch globe made by the Ohio Lantern Co., from the PRR, but with the name "The Hukill-Hunter Co." on top of the lid, and wonders who this was. We don't know, but would guess it was the name of a railroad equipment supply company. SOS on this one, too.

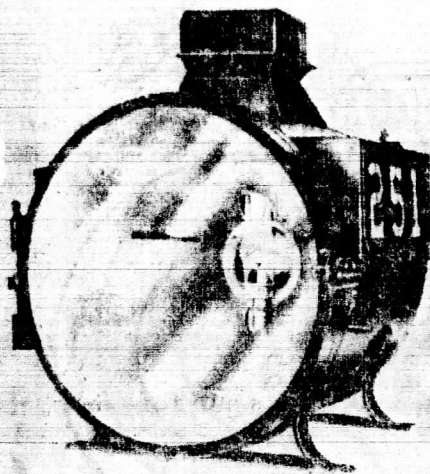
Wes Hammond, Fremont, Calif. - writes that he has found a glass fount from a lantern, with the marking WP CO. Wes does not know for sure if this is railroad, or if the initials might be Western Pacific, or William Porter Co (?), etc. He says that some glass founts had a molded ridge around the top so that it could be slipped down into a ring-type holder. His does not. The fount was found by someone digging for bottles at Wright, Calif., an old rail and lumber town on the old narrow gauge South Pacific Coast RR, according to Wes. He is a member of the Railroad Station Historical Society too. Will try to get those slides of the GM&O stations for you, Wes.

Jim Frisch, Stevens Point, Wisc. - sent a good letter including a most interesting idea, which I will let speak for itself. Please write Jim if you have opinions on this, and your editor will be happy to advertise or make announcements on the subject in this paper, but had better limit my involvement to this. Quoting Jim:

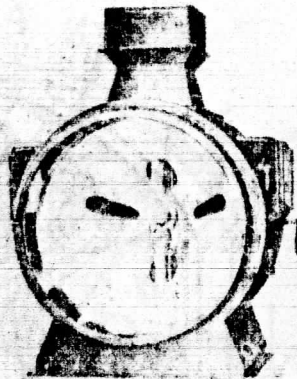
"Anyone interested in organizing a "Society for the Preservation and Restoration of Railroadiana in America" contact Jim Frisch, 1603 W. Cotter Ave., Merrill, Wisc. 54452. Plans are to work through KL&L in developing a fraternity of serious collectors with the aim of promoting fellowship and a list of collectors and their collections. Hopefully, through these listings, a complete collection of American memorabilia may be compiled with the wish that this collection from all members will be willed to the Smithsonian Institute under the auspices of our society. Duplicates of the total collection for the Smithsonian would be auctioned off as a service to the relatives of the deceased. Being students of history, each of us could do no higher service to our fellow countrymen than to will our unique items of antiquity to our nation's historical museum. Each of our collections can only be a small part of the nation's heritage. Together, they can represent an era in America now gone."

John C. Lucas, Los Alamos, N.M. - recently obtained a dandy: a 6 inch globe from the SFP&P - Santa Fe, Prescott & Phoenix - from a shop in Truth or Consequences, N.M. John says the globe - which is turning purple with age - is from this old road which was nicknamed the "Pea Vine" because of its crooked roadbed, and which only operated under the SFP&P name from 1891 to 1901 - then taken over by the Santa Fe.

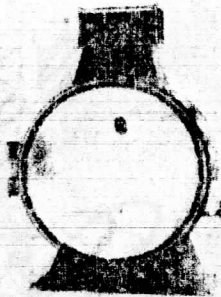
Roy Klaus, Grove City, Ohio - sends us a new key master's name. He has a brass key from the L&N made by the Speckmann Co., Lou.Ky.



No. 251
Oil Reflector & Mirror
Headlight
Farola de aceite y reflector



No. 118
Oil Headlight
Farola de aceite



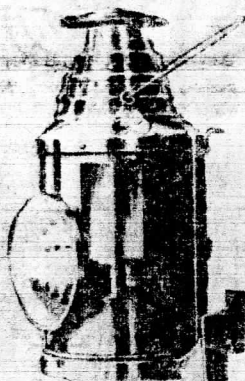
No. 271
Acetylene Headlight
Farola de Acetileno



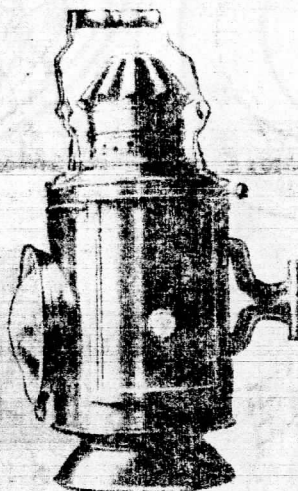
No. 300
Oil Streetcar Headlight
Farola portátil de aceite para
tranvías



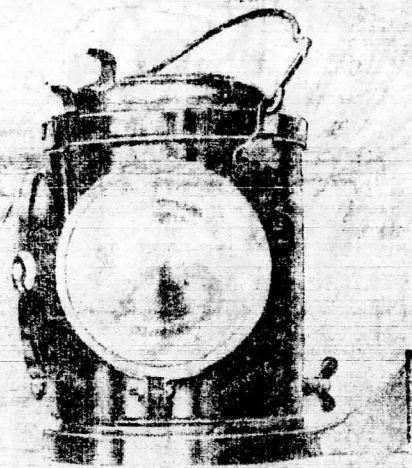
No. 85
Electric Headlight
Farola electrica



No. 175
Oil Automatic Engine Lamp
Farola indicador automatico
de aceite



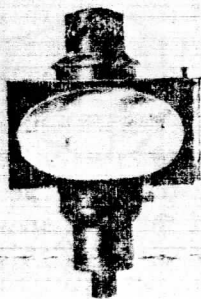
No. 42
Oil Engine Lamp
Farola indicador de aceite



No. 350
Electric Automatic Engine
Lamp
Farola indicador electrico
automatico



No. 3
Oil Water Gauge
Lamp
Farola de aceite
para nivel



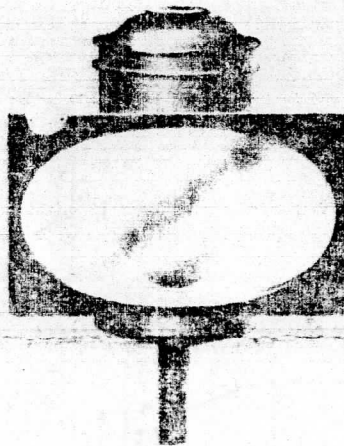
No. 125
Oil Steam Gauge
Lamp
Farola de aceite
para manometro



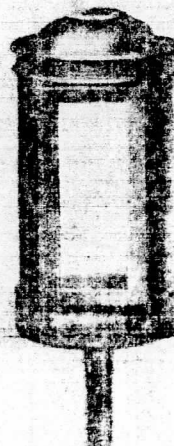
No. 126
Oil Water Gauge
Lamp
Farola de aceite
para nivel



No. 140
Acetylene Steam
Gauge Lamp
Farola de acetileno
para manometro



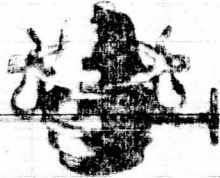
No. 325
Electric Steam Gauge Lamp
Farola electrica para
manometro



No. 326
Electric Water Gauge Lamp
Farola electrica para nivel



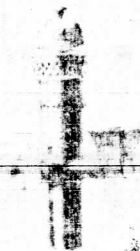
No. 95 Dressel Long
Time Burner
Quemador Dressel de
larga duracion



No. 25
Long Time Burner
Quemador de larga
duracion



No. 1
Low Dressel Burner
Quemador Dressel de
baja



No. 10
Dressel Headlight
Quemador Dressel
para farola



Graystone Long Time Burner
Wicks
Mezclas "Graystone" para
quemadores de larga
duracion

Filed March 11, 1935

2 Sheets-Sheet 1

Fig. 1

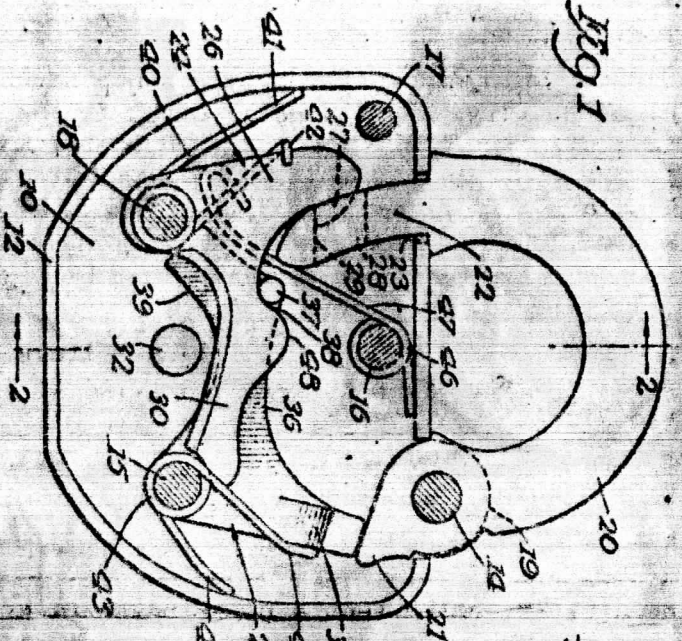


Fig. 2

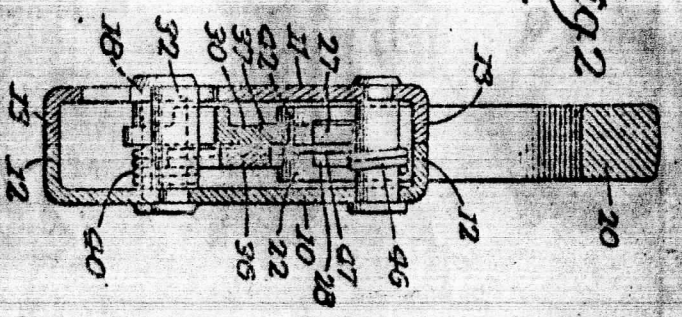


Fig. 3

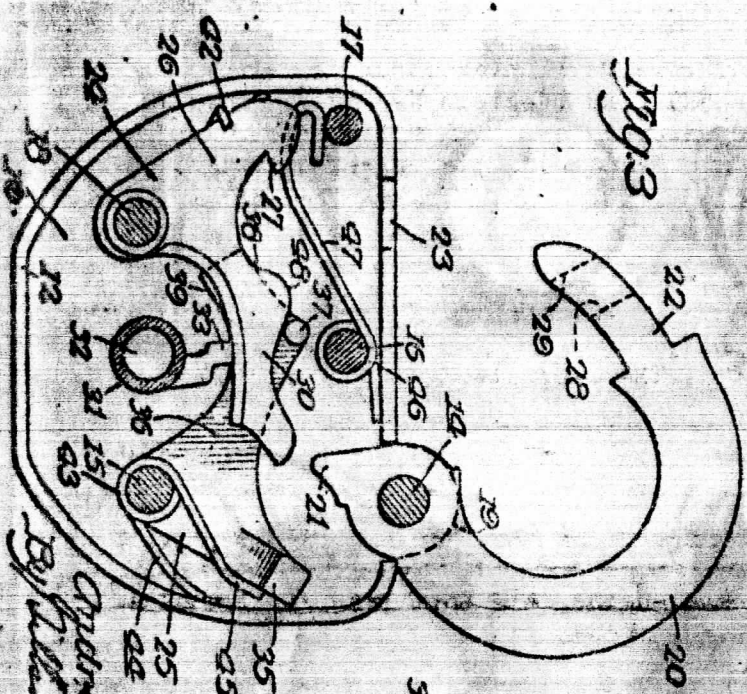
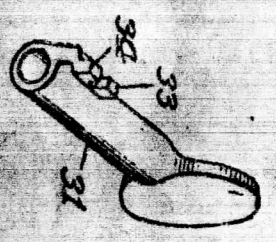


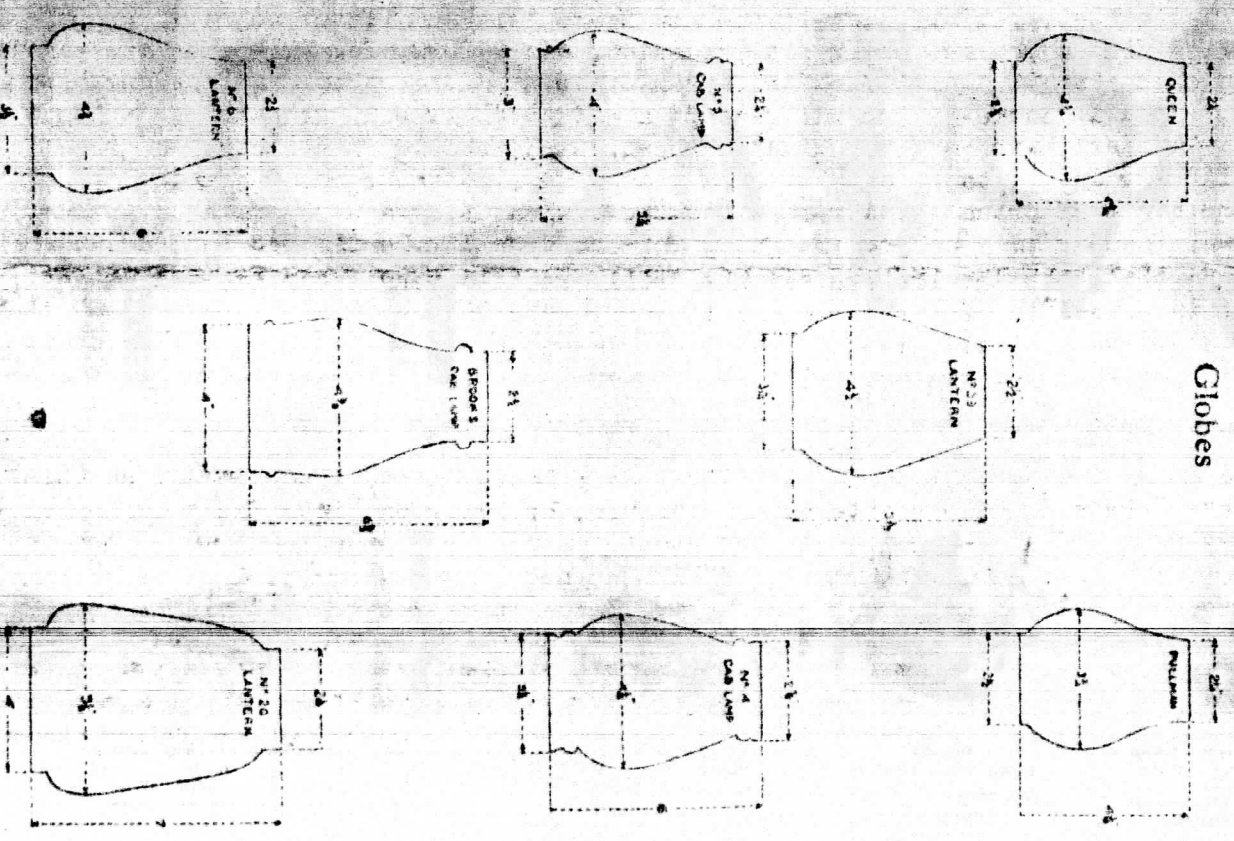
Fig. 4



Inventor:
 Andrew T. Hagerty
 By William Mann
 Attorneys

The Adams & Westlake Company
 New York Chicago Philadelphia

Globes



Bob Smith, Kent, Ohio - says he spent all day Friday, May 16th, taking movies and stills of the NKP 759 "as she crossed Ohio from Lima to Pittsburgh".

Richard Bush, Lockport, N.Y. - sends news of some very interesting lantern finds he made recently: a 5-3/8 bell bottom from the WNY&P RR (Western New York & Pennsylvania); one from the R&S RR Co. (Rochester & Syracuse), and bell bottoms from the Rutland and from the Grand Trunk Western (Canadian National). Dick also has found a $\frac{1}{4}$ Handlan with the marking "TER. R.R.," and wonders what this stands for. Someone give us some help on this one if you can.

Calvin Bulman, Henrietta, N.Y. - has several very unusual finds: keys from the NY&OM RR (New York & Oswego Midland, formed in 1866, later to become the NYC&W), and the BNY&P RR (Buffalo, New York & Philadelphia, formed in 1883), and a lantern from the Deepwater Ry, a company chartered in 1898. The Deepwater later became part of the Virginian, which is now part of the N&W.

Bob and Lou Jones, Hayward, Calif. - report finding a cap badge from the Persidio Ferries RR. We don't have any information on this road, but it sounds interesting.

K. M. Smith, Sr., Fostoria, Ohio - is a yardmaster for the C&O and wrote saying that he would get to see the 759 centennial train going both ways on the N&W route. Hope he did. Mr. Smith sent a color postcard of the engine, the shot taken in Fostoria in March 1957, when the engine was in regular service.

Oliver Pectal ("Peck" for short), Berlin, Conn. - sends word of a brass key he has found marked STL&ARR, which was the St. Lawrence & Adirondack, now a part of the Penn-Central.

Some cleaning and preserving tips from Wayne Daniels: "To clean lanterns that need it, particularly if there is any rust present, I use a stiff and a soft wire brush on an arbor head at about 2200 rpm. In a local hardware store small wire brushes (2" to 3" dia.) can be purchased with center spindles for chucking in a hand drill or drill press. If a lantern has rusted, I give it a protective coat of dead flat polyurethane varnish from an air brush. This is just about indestructable, and insures that rust will not reappear. Flat furniture varnish such as McKlosky's is also good, but an air brush is imperative for an invisible coat. These are techniques that we often use professionally." Thanks very much, Wayne. While on this subject let me tell you all that in the new Sears Fall and Winter catalog, on page 1149 you will find a 12 inch power bit extension, no. 9G2090, for \$1.45. On one end it is made to chuck into a $\frac{1}{4}$ inch or larger drill, and the other end (the business end) has a 5/8 dia. socket which will accept a $\frac{1}{4}$ inch drill bit, or other attachment with a $\frac{1}{4}$ inch shaft (wire brush, grinding wheel, etc., etc.). This should be great for getting way down into a lantern frame with a small wire brush. I'm going to get one at the first opportunity. A word of caution: when using a wire brush or grinder on a power hand drill - if you are going to work down inside the frame of a lantern - be sure that both the lantern and the drill are held very securely, and do not lock the trigger switch of the drill on. If you ignore any of this advice you may find that you have a wildly girating lantern frame on your hands, beating itself and perhaps you to pieces. Be careful!

LANTERN LIGHT

I'm going out on a limb on this (I've never heard anyone else comment on this): I believe I have found the date of manufacture, or sale, on Dietz Vesta lanterns. I have seven Vestas, all of which have about three patent dates stamped in small letters, always followed by larger letters such as: S-3-23, S-5-25, S-9-41, etc. Now if my assumption is wrong I want someone to let me know, but the "S" could stand for "Sold," or perhaps it is a designation about when it was made. But I know that the numbers stand for the month and year - so - I believe that we have here a way of actually pinning down the age of a Vesta, as you can do with an Adlake Kero. The one of mine with S-3-23 is the oldest I have. Let me know the oldest and most recent you have. Perhaps we can learn something.

THE SWITCH STAND

WANTED - 5 3/8 cast globes - ACR, ACL, BRT, CA&S, CP&STL, CNRR, C&P, CVRR, C>, D&SL, FW&DC, GTW, GW, IHB, GR&I, KCM&O, KCB, KCT, MV, MO&LA, OWRR&NCO, SP&S, SI, VRR, W&W. WANTED - 5 3/8 frames: CNR, BELT RY, CI&S, I&STL, M&STL, PCC&STL, V. RY, TSTL&W, EJ&E, NYP&O, T&NO, WTCO, TH&I. WANTED - 6 inch frames: FITCHBURG, FJ&G. TRADE - Lanterns - 5 3/8 ERIE, DL&W, MOPAC bell bottom, FTW&DC, CRI&P bell bottom; 3/4 RF&P, PC, LV, FW&DC. Globes - 5 3/8 cast HV, PCC&STL, ERR, MP, PRR, C&EI; 3/4 cast ACL, N&W, C&O, AT&SF, NYC LINES; 4 1/4 red cast P&R. Most lanterns have marked globes, several cast letters. I will trade for lanterns, keys, globes, etc. HUGH T. GUILLAUME, 494 Capen Blvd., Buffalo, N.Y. 14226

NEW COLLECTOR wants to trade switch keys. Also have PM switch locks to trade for switch keys. VINCE VOLLMEYER, 22340 Cedar, St. Clair Shores, Michigan 48081

FOR SALE - New Dietz "Fitzall" globe (6 3/4 inch), \$2.50 ppd; two 5 1/4 inch red ca- boose marker lenses (round), \$2.50 each ppd; two complete trolley car destination signs, each turns to 35 different Dallas, Texas, destinations. Metal case, inside window, crank, etc. 15 pounds - \$7.50 each, ppd.; one Adlake 250 lantern marked B&O RR, complete, no damage, excellent, globe not marked, clear - \$6.50 ppd.

TRADE - near-new 3/4 Dressel marked GM&O RR, perfect, clear unmarked globe, for one not in my collection - send an SSE for my list; and, will consider trading from my collection a perfect Adlake 250 marked Wabash RR with green etched globe, for a like new and complete 5 3/8 Wabash frame, with fount and burner. Prefer Adlake Re- liable with clear, unmarked globe.

WANT - a Dietz No. 6 globe (6 inch), clear and unmarked, and a clear, unmarked 4 1/4 globe for a Dietz Vesta. Buy or trade on these. WALTER L. GEORGE, 12512 E. 49th Terr., Independence, Missouri 64055

We said we might be late again some time, but had no idea it would happen with this issue. I planned to have this to you on June 23rd, but on the night of June 21st vandals broke into the church and did about \$4,000 worth of damage, including much to our offices. They almost destroyed all the KL&L which was ready, and did do much damage to the mimeograph, which caused it to be in the shop for a long time. So, I guess I had a good excuse this time. But I congratulate you all on your patience. Not one person wrote asking "where is the KL&L?" Thank you, friends. Your editor found two dandy lanterns two weeks ago, both rather unusual: an Adlake 250 from the SJB RR (St. Joseph Belt), and a Dietz Vesta, older tall type, from the KCCC&StJ Ry (Kansas City Clay County & St. Joseph) a long-gone interurban. Both names refer to St. Joseph, Mo., of course. Had a nice visit with Chaplain (Capt.) Arthur L. Dominy who was traveling cross-country with his wife and daughter to his new assignment with the SeaBees at Port Hueneme, Calif. Art has been a chaplain for 25 years. Al Barker, who supplied the illustration of the Adams & Westlake globes, has two pet peeves: (1) when we answer our ads and request a reply, include an SSE (stamped, self-addressed envelope) (2) advertisers, please answer your mail. Al has answered ads, even in the KL&L - and he enclosed an SSE - and has never been answered. Al is right - and we need to extend the common courtesy to do these things.

Some of you are going to hunt me down for the kill if I don't say something about the 1909 Dietz catalog reprint. OK - I find that I can do it nicely, but not fan- cily, in a way so that it will cost you each \$2.50 a copy (instead of \$3.50 as I previously quoted). So far, 25 readers have expressed interest, so, if those read- ers would please write stating their order and including payment, I will get it out for you by the time of the next KL&L issue. I'll need your advance payment as work- ing capital. The catalog is 30 pages of lanterns, pocket size, about 3 1/2 by 6 inches.

The full page illustration of railroad lighting in this issue is from a catalog sheet, of about 1920. Notice it is bi-lingual. Hope you like the color - it had a little more "show-through" than I like, however. Had a lot more news but am out of room again. write when you can.

THE SWITCH STAND - Free to subscribers, the ads will be run once unless repeat is requested. Please send ad on separate sheet. Deadline for next issue: September 12.

WANTED - Ceiling coach lamps, 3 or more identical, kerosene or gas, to complete restoration of 1899 combine. Please state price and enclose picture. J. A. HANNOLD, President, Narragansett Pier RR Co. Inc., 1 Railroad St., Peace Dale, R.I. 02883

WANTED TO BUY ONLY - keys, locks, lanterns, badges, globes, any type ID cards, brake clubs, water cans, oil and kero cans, extra parts. Answer all mail. Thanks. SKIP KITCHEN, 20421 Lake Rd., Rocky River, Ohio 44116

FOR SALE - Fresnel globes: red, clear, green, blue and amber for \$4.00 each, minimum order two globes, any colors. Also, authentic new railroad spikes, clear, gold or silver coated, \$1.25, or \$1.50 with favorite rr initials. Nice for paperweights. Taking orders now, limited quantity. SKIP KITCHEN, 20421 Lake Rd., Rocky River, Ohio 44116

HAVE brakeman's hand lanterns, markers, switch semaphore lanterns and headlights for sale, or for trade for switch keys, or loco builder's plates or brass whistles. Also have switch keys to trade (send SASE for lists). Will buy or trade for switch keys, conductor's uniform buttons, conductor's brass or nickle oil burning lanterns and loco builder's plates, conductor's hat badges. A. E. BARKER, 2501 Date Circle, Torrance, Calif. 90505

TRADE - Have NYNH&H 5 3/8 Adlake Reliable, EL 3/4 Adlake Kero, and others; have globes: NYNH&H 5 3/8 clear, DL&W 5 3/8 red, to trade for comparable items. Best offer takes NYNH&H 6 1/4 clear globe by EOD & SONS. Seeking L&NE 5 3/8 globe; NJMry, NYS&W, and NYC&W lanterns, and especially Dietz Vulcan fount and burner and fount for Armspear 5 3/8 lantern. Send SSE for list. WAYNE M. DANIELS, 279 Maywood Ave., Maywood, N.J. 07607

FOR SALE - Dietz Vulcan 5 3/8 plain clear globes, \$2.50; 3/4 red fresnel and plain red or clear globes, \$1.75 each. All postpaid. TRADE - NS, VGN, WT CO, C&O, N&W, SOU RY, SAL, ACL, P&LE, BR&P, RF&P, SEABOARD, and ERIE lanterns for what I don't have. WANT - 5 3/8 VIRGINIAN globe. JOHN L. BURN, 1111 Stanton Drive, Shelby, N.C. 28150

HAVE - list of trades. Interested in a VGN, Clinchfield, Interstate and any old Ohio line keys. Also have a few timetables etc., to swap for keys. W. P. BREIEL, 143 East Beck St. Columbus, Ohio 43206

WANTED (BUY) - 3/4 and 5 3/8 cast globes from the Rutland; 5 3/8 IC RR frame complete; keys from TRRA, Southern, P&P and WM. Will pay for copy of Issue No. 2 of KL&L. Thank you. CAL BULMAN, 45 Garden Parkway, Henrietta, N.Y. 14467

FOR BEST OFFER in switch keys will trade one Aladdin Caboose Lamp, with extra globe and mantles. Also need issues Nos. 2, 8 and 9 of KL&L. R. T. TAYLOR, 705 S. Oakley Ave., Columbus, Ohio 43204

WANTED - Kero 3/4 size globe marked Southern Ry. Also a Dietz Vesta 4 1/4 size globe marked NYNH&H. These globes may be of any color but prefer clear. ROBERT M. HALL, Box 95, New Florence, Pa. 15944

WANTED - Switch keys from FtDDM&S, M&StL, Newton & Northwestern, Iowa Terminal and Southern Iowa. All mail answered. LARRY ADAMS, 969 Park Circle, Boone, Iowa 50036

WANTED - Marked railroad teaspoons. Will trade for lanterns, switch keys and other railroadiana. CHAPLAIN A.L. DOMINY, USN, Office of the Chaplain, Naval Construction Battalion Center, Port Hueneme, Calif. 93041

HAVE Railroad, Railway Progress and Trains magazines for sale. I trade for used switch keys. Send for list. H. WALLACE EWART, 1946 East Clay, Decatur, Ill 62521

WANTED - Wax seals from railroad and express companies. R. H. ENSZ, RFD 5, Newton, Kansas 67114

FOR SALE - Blue, crystal or amber Union Pacific ash trays, \$2.00 ea. plus 25¢ post., or 3 for \$6.00 plus 50¢ post. Railroad playing cards, new, from Pennsylvania RR, N&W, ACL, CB&Q, Strasburg RR, C&O RR, NP, GN, IC, D&RGW RR, Milwaukee Road, California Zephyr, L&N, UP - some with train photos, \$2.00 each plus 18¢ post. Also: Union Pacific dinner plate, new, \$4.00; Union Pacific tea plate, \$3.00; Penn-Central pencils, new, \$1.75 per dozen; new L&N Switch lock with new brass key, marked, \$12; Missouri Pacific switch lock, very good cond., no key, \$5.00. Please ad postage of 50¢ on all orders except as noted. Excess returned to you. JOHN S. STONE, 6810 Chambers Ave., Cleveland, Ohio 44105

FOR SALE - Four caboose markers, 4-lens, oil burning, \$35.00 each; five 4-lens oil burning switch lamps, \$25.00 each; seven 4-lens reflector-type switch markers, \$10.00 each; two Bullet type, 4-lens electric switch lamps, \$20.00 each; one TP passenger coach step box, \$35.00; two oil Depot Lamps, \$10.00 each. All items FOB Lexington. F. R. MILLER, 1617 Amelia Ave., Lexington, Mo. 64067

HAVE - Have several switch locks, brass and steel, to trade for switch, coach or caboose keys (marked only). Also Pintach gas keys for trade. KEN L. KERR, 4346 Fisher St., Kansas City, Kansas 66103

LANTERNS FOR TRADE - 3 1/4 LI RR, WT Co., 4 1/4 Dietz Vesta CRR of NJ, Boston & Albany, 5 3/8 NYNH&H RR and StL-SW. Would Like 5 3/8 PCC&STL, PL&E, ACL, C&O, SEABOARD, HV, Maine Central, Wabash, SP&S, Soo Line. WANTED - Armspear markers from any road. WAYNE RHEINFELD, 1011 Neilson St., Far Rockaway, N.Y. 11691

WANTED - KL&L back issue No 2 and a lantern frame marked NY&NE for my 6-1/8 globe; and, TRADE - Dietz No. 999 marked NYGS for same lantern from another railroad. PHILIP S. SIMMS, R.D. 1, Rte 416, Montgomery, N.Y. 12549

WANTED - Unmarked lanterns complete, 6 1/2", 5-7/8" or 6", also 5-3/8", no globes. FOR SALE - Plate from Shay loco, \$35.00; 4-lens Dressel marker, bell bottom, NYC, complete, \$20.00 plus postage; six fresnel red globes, \$2.00 each; Railroad Magazine, 1967-68, \$8.50. HOWARD L. TURK, 58 Lake Avenue, Lancaster, N.Y. 14086

FOR SALE OR TRADE - NP, SOO LINE, GN and CMSTP&P lanterns. Also one GP and one UP caboose marker lamp. WANT - a frame for M&StL lantern. WAYNE WILSON, Enderlin, North Dak. 58027

TRADE - Have the following lanterns to trade: B&M, B&O, CNR, D&H, DL&W, ERIE, EL, GT, LV, LS&MS, N&W, NYC, NH, PL&E, PC, PRR, PENN LINES. RICHARD BUSH, 97 Webb St., Lockport, N.Y. 14094

TRADE - Keys from the following: AT&SF, B&O, C&O, CGW, Rock Island, C&G (Columbus & Greenville), MOPAC, NYC, CNR. MoPac Rule Books, dated May 1, 1950. Trade for keys, locks and rule books. PAUL F. MOON, 3826 Lochridge Road, North Little Rock, Ark. 72116

INVITATION - Railfans and their guests are invited to visit at my other home at 712 S. 8th St., Coshocton, Ohio 43812, any Saturday or Sunday. I spend almost every week-end there. Write or phone first. BOB SMITH, (phone) 614-622-5652.

WANTED - Lanterns, globes, switch keys from railroads that entered Ohio. Also, want Dietz No. 6 globe, unmarked or marked E&P. Have lanterns and keys for trade, some for sale. BOB SMITH, 134 Columbus St., Kent, Ohio 44240

WANTED - will buy: frame only, 5 3/8 size, marked for "Burlington Route," with either full name or initials. WESLEY L. HAMMOND, 41654 Meiggs St., Fremont, Calif. 94538

WANTED - NYC&STL RR globe, 5 3/8 size, and frame, 5 3/8 size stamped LS&MS Ry. GIL RITENBURG, Niagara Falls, N.Y. 14304