

KEY

LOCK

&

LANTERN

Number 1 <sup>SPRING</sup> 1966 \$1 per year

Paul V. Pietrak Box 76  
North Boston, N.Y. 14110

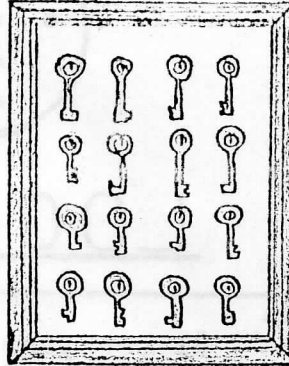
Welcome to KEY LOCK & LANTERN, a newsletter for the collector of railroad hand lanterns, locks and keys. In the following issues we hope to provide interesting and informative shorts on these three items. We will also try to keep you abreast on the happenings of our fellow collectors. We hope you will take advantage of our WANT ads and FOR SALE section of the K.L.& L. If anyone has any information pertaining to keys, kocks or lanterns that he would be willing to pass along, it would be most welcome.

We have had a few letters from people with very impressive collections. Bob Jones out in Covina Calif. informs us his collection consists of 450 lanterns, 230 keys and about 30 kocks. Now thats a collection. Bob says to tell all his collector friends that Bob and Louise Jones will be home to all collectors coming to the West coast after July 6. And it is always open house. Another impressive collection is owned by Sanders A. Frye of Westerville, Ohio. He has lanterns from 175 different railroads. Mr. Frye, has collected some 400 lanterns total. He said he is not interested in locks or keys, but has a few to trade for lanterns.

With large collections such as these, there comes a time when space starts to run out. Mr. Sanders A. Frye looks like he solved his space problem. In two pictures he sent us he shows his lanterns displayed in cabinets. He said that he ran out of ceiling space in his work shop and so conceived the idea of wall cabinets with lanterns, in the cabinets as well as mounted on the inside of the cabinet doors. This way also, the lanterns are out of the way and are protected against dust and so on.

Each of us, no matter how large our collection is, have our prize keys locks and lanterns. We should provide a suitable place for their display. In the normal living area of our home's our hobby should be displayed to some extent. This could be done with some respect to the general decor of the room. Of coarse, of

collections are displayed in the basement, attic or garage, but what about those favorite items we could never part with? We came upon an idea to display switch keys which is quite a conversation piece in our living room. In our house, we have Early American furniture. What we did was to purchase an unfinished picture frame at the local lumber yard, and with a piece of  $\frac{1}{4}$  inch plywood cut to fit the frame and some green felt to go around the plywood, we had an interesting setting to show off switch keys. To hang the keys, we used common brass tea cup hooks. The brass switch keys on the background of green felt looks quite nice.

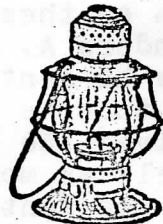


There must be dozens of ways to show off and display these collectors items. One thing, that in my estimation is unexcusable, and that is making lamps out of lanterns. It's not too bad if one has this done professionally, or with great care. A few months ago we came across a SOUTH BUFFALO Ry. lantern with a hole crudly cut in one side and a poor fitting electric fixture attached. This was unfortunate.

The following information was taken from "The History of The Adams & Westlake Company" In Chicago in 1857, Mr. John McGregor Adams and Mr. John Crerar established the firm of Crerar, Adams & Company to deal in contractors and railroad supplies, which were in demand in the opening of the west and building of railroads. The two men built a factory in the windy city but it burned in the Great Chicago Fire of 1871. The firm immediately rebuilt and a broad line of merchandise was manufactured to meet the demands of the growing railroad industry.



No. 2.—Globe Street Lamp.



No. 89.—Iron-Clad Railroad Lantern.

## STEAM GAUGE & LANTERN CO.,

SYRACUSE, N. Y.

Western Office: 25 Lake St., Chicago, Ill.,

MANUFACTURERS

### STANDARD TUBULAR LAMPS AND LANTERNS.



No. 6.—Side Lift Lantern.

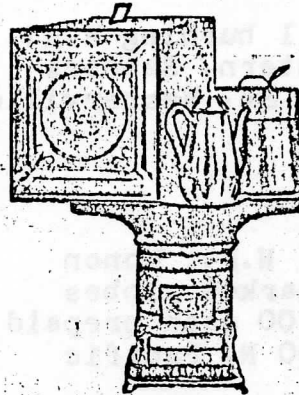


No. 2.—Square Lamp.

- Locomotive Head Lights, ::
- :: Railroad Lanterns,
- Conductors' Lanterns,
- Switch Lamps,
- Station Lamps, :: ::
- Street Lamps,
- :: Square Lamps,
- :: Driving Lamps.

1893 ad in Poor's

Following the war of 1861 - 1865 the railroads adopted the use of sleeping cars as well as more improved facilities in their other cars and this created a demand for car hardware and ornamental trimmings which Mr. Adams and Mr. Crerar met by organizing The Union Brass Manufacturing Company in 1867. This company was incorporated by Act of the Illinois Legislature in 1869. They immediately built a factory on property which they purchased from Crerar, Adams & Co. at the corner of Franklin and Ohio Streets, but this plant, also, was destroyed in the fire of October 1871.



THE  
**ADAMS & WESTLAKE**  
 Wire Gauze, Non-Explosive  
**OIL STOVE.**

The ONLY Oil Stove made with  
**WIRE GAUZE** inside the reservoir,  
 making it absolutely safe.

**AWARDED**

The Highest Premium—a Silver  
 Medal—at the Paris Exposition of  
 1876 for

**Safety, Capacity, and Durability.**

Made in four sizes—Nos. 1, 2, 3, and 4. Send for Illustrated Catalogue and Price-List.

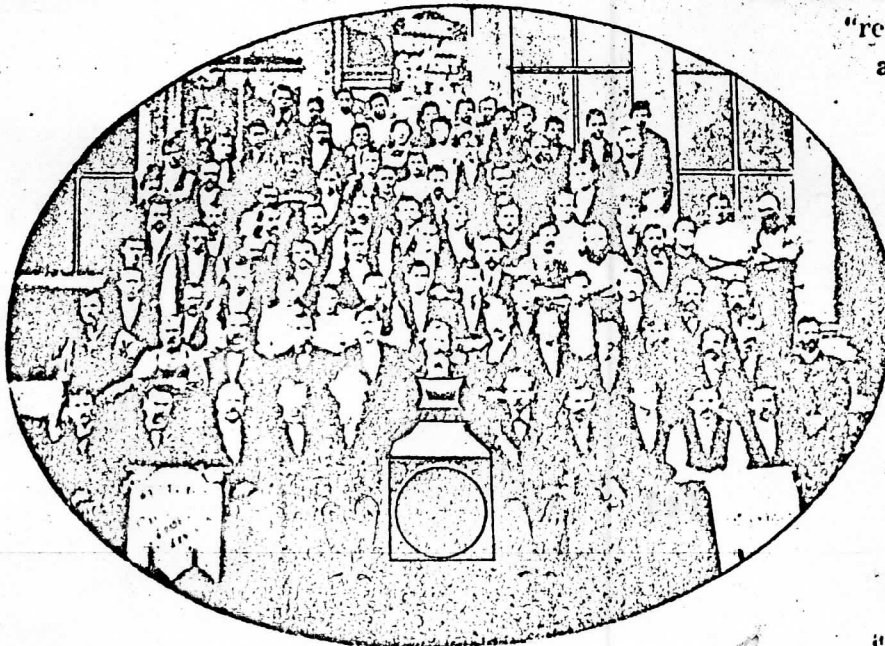
**THE ADAMS & WESTLAKE MFG. CO., Chicago.**

**EASTERN AGENCIES.**

**E. HITCHAM & CO.,** 100 Beekman Street, New York.  
**GEO. BOOTH & CO.,** 59 and 61 North Second Street, Philadelphia.  
**LOED & ROBINSON,** 89 and 90 West Lombard Street, Baltimore.

Reproduction of 1879 advertisement.

In 1863 William Westlake had come to Chicago from Milwaukee where he had been working for the Milwaukee and La Crosse Railroad, first as a coppersmith and later as a locomotive engineer. He had invented a



Employees of Dane, Westlake & Covert about 1872.

"removable globe lantern", so after coming to Chicago he organized the firm of Cross, Dane and Westlake for the production of this lantern as well as oil burning headlights and other items of his invention, for he was of a nature to be always developing new products. The factory, on Michigan Avenue, was destroyed in the fire of 1871, and the firm was reorganized into Dane, Westlake & Covert and a new factory was erected at Franklin and Lake Streets.

If you think the Key Lock is worth wile, don't forget to tell other collectors.

Ads will stay in for two issues.

WANTED Fitchburg-oil burning R.R. switchmans hand lantern. Sanders A. Frye 145 W.Home St. Westerville Ohio 43081

FOR SALE S.P.& S., N.P., Monon NKP.all  $3\frac{1}{4}$  inch unmarked globes good condition. \$7.00 each prepaid. Lester Fremming 1650 N. Pacific Kelso, Wash. 98626

WANTED City of New York lantern Lester Fremming 1650 N.Pacific Kelso, Wash. 98626

WANTED Complete Conductors lanterns with two color globes. Cliff W. Comer 3718 E4 Dayton,Ohio 45403

WANTED 5  $3\frac{3}{8}$  size marked globes, blue, amber and green only, any road. Cliff W. Comer 3718 E4 Dayton, Ohio 45403

WANTED lantern with no markings to fit 5  $7\frac{7}{8}$  globe. Dietz if possible. Paul V. Pietrak Box 76 North Boston New York 14110

TRADE Dietz No. 6 New York Central on lantern and globe, globe 5  $7\frac{7}{8}$ . FOR similar type lantern. Paul V. Pietrak Box76 North Boston, New York 14110